

Which type of battery is used for outdoor power supply





Overview

What type of battery does a portable power station use?

Portable power stations use different types of batteries, including lithium-ion, lead-acid, and nickel-metal hydride. Each type of battery has its own advantages and disadvantages, so it's important to choose the right one for your needs.

What kind of battery do you supply for your Leisures?

We supply a massive range of leisure batteries from many different manufacturers for almost all leisures that have ever been built. Below you will find our complete range of 75Ah leisure batteries. We have tested each 75Ah and we have highlighted our star performer from the result of our tests.

What is a portable power station?

A portable power station consists of a battery, a power inverter, and a set of outlets or ports for connecting electronic devices. The battery stores electrical energy, which is then converted by the power inverter into the type of electricity needed by your devices (e.g. AC or DC power).

What can I use to charge my portable power station?

This may include a wall charger, a car charger, or a solar panel. Avoid using third-party charging equipment, as this may not be compatible with your portable power station and could damage the battery.

How do I choose a portable power station?

Consider the size and weight of the portable power station, as well as the size and weight of the battery and any accessories you may need, such as a carrying case or solar panels. Portable power stations use different types of batteries, including lithium-ion, lead-acid, and nickel-metal hydride.

How many outlets does a portable power station have?



The number and types of outlets and ports on a portable power station will determine how many and what types of devices you can power. Most portable power stations have at least one AC outlet, which can be used to power appliances that require standard household electricity.



Which type of battery is used for outdoor power supply



What is the Best Battery Type for Your Power Station?

Which one is better depends on your use and needs. If you need to consider factors such as safety, durability and cost when choosing an outdoor power supply, then a ...

Different Types of Portable Power Supply Stations

Choosing the right battery for your portable power supply station depends on your specific needs and requirements. If you need a high-power capacity, ternary lithium batteries are the way to ...



Power Adapter for Ring Spotlight Cam Battery, with ...

Power Adapter for Ring Spotlight Cam Battery, with 25Ft/7.5m Weatherproof Outdoor Cable to Continuously Charge Your Home Security ...

Guide to Choosing the Right Batteries for Outdoor Activities

When selecting batteries for outdoor activities, prioritize weight, capacity, temperature

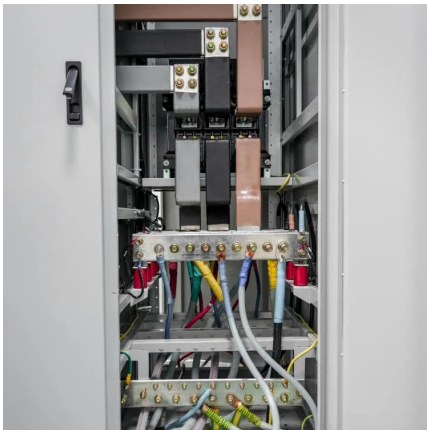


tolerance, and compatibility with your devices.
Lithium batteries are often ...



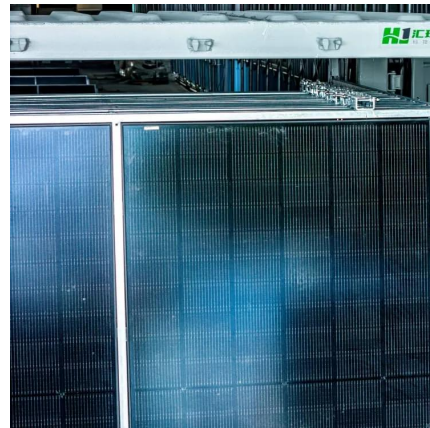
How to choose outdoor power supply for solar lights

A higher wattage solar panel will charge the batteries more rapidly during the day, ensuring your lights stay illuminated for longer durations at night. Consider the battery type as ...



Different Types of Portable Power Supply Stations

Choosing the right battery for your portable power supply station depends on your specific needs and requirements. If you need a high-power capacity, ternary ...



Which Battery Is Best for Outdoor Power Stations?

For more demanding outdoor use, LFP batteries are ideal for their stability and long lifespan, while 21700 lithium batteries offer superior capacity for extended power needs.



[5 Best Portable Battery Backup Jackery Picks](#)

You'll need a stable power backup solution to charge appliances during outdoor adventures or power outages. In this Jackery's guide, we will list the 5 best portable battery ...



[How to choose an outdoor power supply?](#)

The built-in battery is a lithium iron phosphate battery, which uses an automotive-grade power battery with less heat generation and a long life. ...

[Ultimate Guide to Generators for Events](#)

Your event needs power for all outdoor appliances, ensuring everything remains powered up. Generators for events act as an alternative power source for different outdoor ...



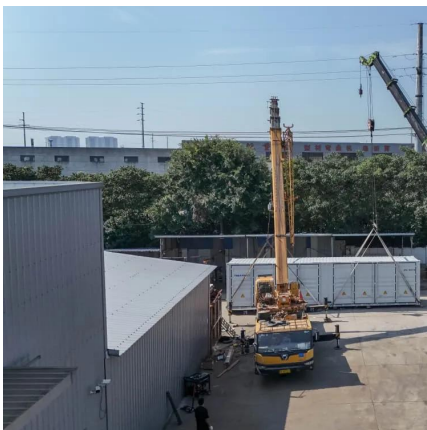
The Ultimate Guide to Portable Power Stations: How to Choose, Use...

Portable power stations use different types of batteries, including lithium-ion, lead-acid, and nickel-metal hydride. Each type of battery has its own advantages and disadvantages, so it's ...



How to Choose the Right Outdoor Power Supply

Ensure the outdoor power supply offers the right types and number of ports for your devices: AC Outlets: If you need to power high-wattage appliances like refrigerators, ...



Best Outdoor Battery Recommendations for Off-Grid Power

Find the best outdoor battery recommendations to stay powered anytime with rugged reliability.

Product types of outdoor portable energy storage power supply

Outdoor power supply is a multi-functional power supply with built-in lithium ion battery and can store electric energy, also known as portable energy storage power supply. The outdoor power ...





What cells are used for outdoor energy storage?

There are six commonly used energy storage power sources, which are aluminum-rich lithium battery, lithium manganese acid battery, ...

Outdoor UPS

Outdoor UPS are rugged back-up power supply systems that are designed to weather the elements in harsh outside locations.



How to choose an outdoor power supply?

The built-in battery is a lithium iron phosphate battery, which uses an automotive-grade power battery with less heat generation and a long life. The advantages of this type of ...

Ryobi 40V Battery Power Adapter with USB-C PD & LED Work ...

This versatile adapter is designed for Ryobi 40V batteries, transforming them into a portable power supply with lighting and fast-charging capabilities. Equipped with USB-A and Type-C ...



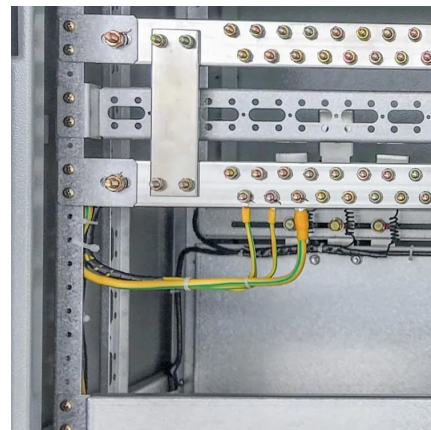
Guide to Choosing the Right Batteries for Outdoor Activities

Selecting the right battery involves balancing factors like duration, performance, cost, and environmental impact. This guide provides an in-depth look at different battery types, ...



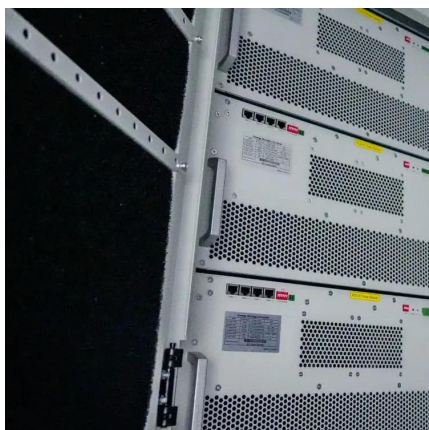
How to Choose the Best Charging Method for an Outdoor Power Supply

In application scenarios such as camping, outdoor photography, emergency rescue, scientific field research, and vehicle-mounted operations, more and more people are facing a common ...



What cells are used for outdoor energy storage?

There are six commonly used energy storage power sources, which are aluminum-rich lithium battery, lithium manganese acid battery, lithium titanate battery, lithium iron ...





What is the Best Battery Type for Your Power Station?

Which one is better depends on your use and needs. If you need to consider factors such as safety, durability and cost when choosing an ...



Different Types of Portable Power Supply Stations

Portable power supply stations have become increasingly popular in recent years, providing a reliable source of power for outdoor activities, emergencies, and more. These stations store ...

batteries

Lead acid "car battery" is the obvious choice - they are big and bulky but designed to be charged "on the fly". You can forget about Li/Ion chemistries since they can't be charged ...



AC/DC Outdoor UPS Systems

Our AC/DC Outdoor UPS(TM) back-up systems provide a complete, uninterruptible power supply that integrates quickly with batteries, loads, and monitors. DC ...



Need DC barrel power specs for Ring Stickup Cam ...

I'm planning on powering my Ring Stickup cam battery through the DC barrel power connector, and would like to confirm the specs. Everything I read said ...



The Ultimate Guide to Portable Power Stations: How ...

Portable power stations use different types of batteries, including lithium-ion, lead-acid, and nickel-metal hydride. Each type of battery has its own advantages ...

[Outdoor Batteries at Tractor Supply Co.](#)

Power up your outdoor equipment with reliable and long-lasting batteries designed to keep you going through all your farming, gardening, and outdoor activities. From tractors to ...





Types of Batteries Used in Portable Power Stations , Guide

Learn about the different types of batteries used in portable power stations, including Lithium-ion, LiFePO4, and Lead-acid batteries. Explore their advantages, lifespan, energy efficiency, and ...

Contact Us

For catalog requests, pricing, or partnerships, please visit:
<https://talbert.co.za>