

What size inverter should I buy for 24v





Overview

Before we go any further, we highly recommend that you choose a pure sine wave inverter. This type of inverter delivers high-quality electricity, similar to your utility company. This way, none of your appliances run the risk of being damaged. Now, when it comes to sizing your inverter, you always need to check.

We have summarized the appliances that inverters from 300W to 3000W can run depending on their rated maximum power. Note to our readers: Use the above formula to determine.

What size solar inverter do I Need?

A 4.5 kW array (or ten 450-watt solar panels) would just about cover your consumption. The type of solar panels you choose can also impact the size of the inverter you need. Different types of solar panels have different wattage ratings and efficiency levels. The three main types of solar panels are monocrystalline, polycrystalline, and thin film.

Do I need an inverter size chart?

The need for an inverter size chart first became apparent when researching our DIY solar generator build. Solar generators range in size from small generators for short camping trips to large off-grid power systems for a boat or house. Consequently, inverter sizes vary greatly.

What size DC to AC Power Inverter should I buy?

The size you choose depends on the watts (or amps) of what you want to run. We recommend you buy a larger model than you think you'll need, at least 10% to 20% more than your largest load.

How much power does an inverter need?

The continuous power requirement is actually 2250 but when sizing an inverter, you have to plan for the start up so the inverter can handle it. Third, you need to decide how long you want to run 2250 watts. Let's say you would like to power these items for an eight-hour period.



What is inverter size?

Inverter size is measured in watts (W) and depends on two key specs: *

Important: Your inverter must cover both the total running watts of all devices plus the highest surge wattage of any single appliance.

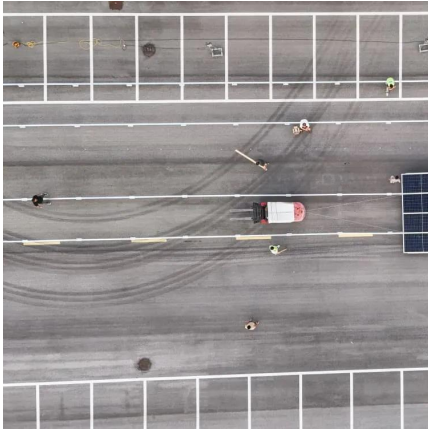
3. Step-by-Step: How to Calculate Your Inverter Size Include: Home: Fridge, lights, TV, microwave, AC.

How to choose a power inverter?

Second, select an inverter. For this example, you will need a power inverter capable of handling 4500 watts. The continuous power requirement is actually 2250 but when sizing an inverter, you have to plan for the start up so the inverter can handle it. Third, you need to decide how long you want to run 2250 watts.



What size inverter should I buy for 24v

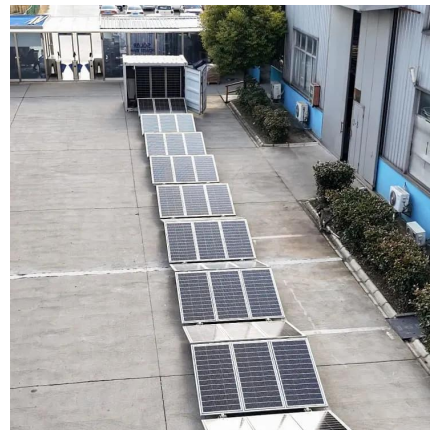


Frequently Asked Questions About Power Inverters , DonRowe

What size inverter should I buy? We carry many different sizes, and several brands of power inverters. See our Inverters Page for specifications on each of our models. Short Answer: The ...

[Inverter Size Chat: What Size Inverter Do I Need?](#)

That's why I've put together a handy inverter size chart in order for you to quickly find out what size inverter is best for your needs. We'll start by going through the basic considerations, use ...



What Size Inverter Do I Need

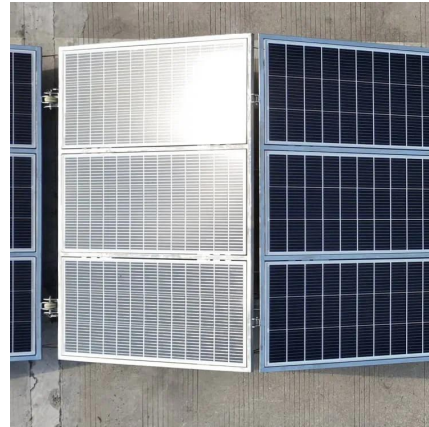
What size inverter do you need? This guide covers wattage calculations, surge power, and key factors to help you choose the right inverter size.

What Size Inverter Do You Need? A Complete Guide for Home, ...

Choosing the right inverter size is crucial--too small, and your appliances won't work; too large,



and you'll waste money. This guide will help you determine the ideal inverter ...



What Size Inverter Do I Need

What size inverter do you need? This guide covers wattage calculations, surge power, and key factors to help you choose the right ...

What Size DC to AC Power Inverter Should I Buy?

What size inverter should I buy? (and Formula to convert Amps to Watts) We carry many different sizes, and several brands of power inverters. See our Inverters Page for specifications on each of



How Do I Match My Battery Size to My Inverter?

A general rule is that for every 1000 watts of inverter capacity, you should have at least 100Ah of battery capacity. For instance, if you have a 2000W inverter, you should ideally have at least ...



What Size Inverter Do I Need for a 100 Watt Solar Panel

Wondering what size inverter you need for a 100 watt solar panel? Here's how to find the right inverter and calculate its size.



[Inverter Size Chat: What Size Inverter Do I Need?](#)

That's why I've put together a handy inverter size chart in order for you to quickly find out what size inverter is best for your needs. We'll start by going through ...

Understanding Solar Inverter Sizes: What Size Do ...

Did you know solar inverters come in different sizes? Learn why size is important and which size inverter you need for your solar PV system here.



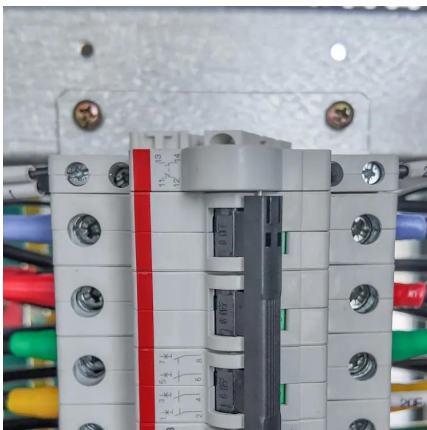
Inverters for sale in South Africa

There are so many options to consider when it comes to choosing an inverter in South Africa, there are so many inverters for sale. Voltage options include 12V, 24V and 48V. Inverters can ...



[The Only Inverter Size Chart You'll Ever Need](#)

We have created a comprehensive inverter size chart to help you select the correct inverter to power your appliances.



[What Size Inverter Do I Need To Run A Tv?](#)

You'd need about a 100-500 watt inverter to run any size TV. The exact size will depend on the size and wattage consumption of your TV. Now ...

What Size Inverter Can I Run Off a 100Ah Battery? A ...

This capacity influences how long an inverter can run appliances before needing a recharge. However, battery capacity alone doesn't dictate inverter size. The inverter converts ...





How to Choose the Right Size Solar Inverter: Step-by-Step with ...

Wondering what size solar inverter do I need for your solar system? This guide walks you through calculating inverter size based on panel capacity, power usage, and safety ...

Calculating Inverter Wire Size

What size DC Wire and Fuse should I put on my inverter? When designing a system, some of the most critical connections are the big wires to the inverter. The best advice is to do what the ...



What size inverter should I buy? (and Formula to convert Amps to ...

We recommend you buy a larger model than you think you'll need (at least 10% to 20% more than your largest load). More Questions? ([Back to FAQ](#))

What Size Inverter Do You Need for Your Home? , Renogy US

The inverter size directly impacts its efficiency. Undersizing may optimize the inverter to operate in specific conditions, whereas oversizing may help you with future expansion. How to choose ...



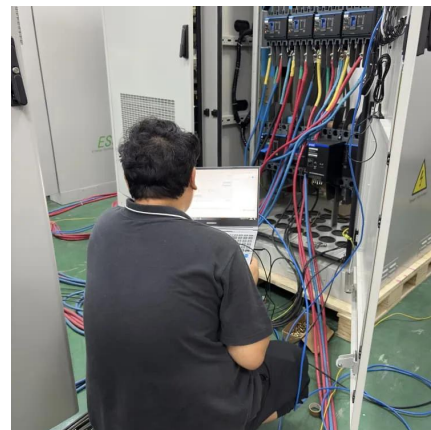
Offgrid Solar Inverter Buyer's Guide for Beginners

Inverters I recommend: <https://www.solarinverter.com/>
~~~~~\*Does off-grid solar confuse you? Save time and



## [Solar Inverter Sizing Calculator: Important Guide](#)

For example, if the total load is 2000W and the battery bank is 24V, the inverter size should be:  
 $2000 \div 24 = 83.33 \text{ A}$ . Choose an inverter ...



## [How To Size A Solar Inverter in 3 Easy Steps](#)

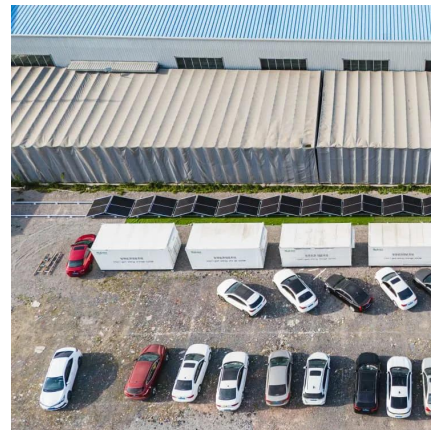
In this guide, we share 3 easy steps on how to size a solar inverter correctly. We explain the key concepts that determine solar inverter sizing including your ...





## What Size Wire For Any Inverter: Inverter Wire Size ...

Choosing the right cables for your inverter can be downright confusing. This guide helps you find the right size wire for any sized inverter.



## [How To Size A Solar Inverter in 3 Easy Steps](#)

In this guide, we share 3 easy steps on how to size a solar inverter correctly. We explain the key concepts that determine solar inverter sizing including your power needs, the type and number ...

## What Size Inverter Do I Need?

Finding the proper inverter size for your needs is as simple as adding together the necessary wattages of the items that you're looking to power.



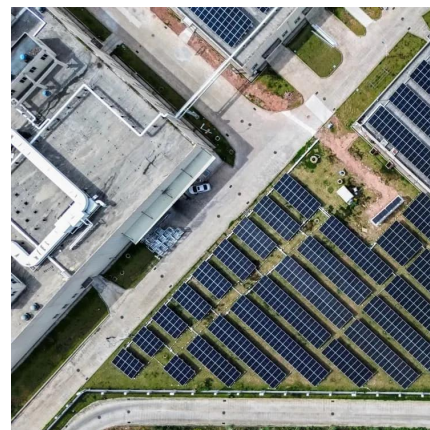
## What Size Inverter Do You Need? A Complete Guide ...

Choosing the right inverter size is crucial--too small, and your appliances won't work; too large, and you'll waste money. This guide will help ...



### What Size Inverter Do I Need for My Power Needs

The size of the inverter you need depends on the watts (or amps) of the devices you want to run. It is recommended to buy a larger model than needed, at least 10% to 20% ...



### **What Size Inverter Do You Need for Your Home? , Renogy US**

To calculate or determine what size inverter can meet your energy requirements, you need to calculate the total power of all the appliances you want to run with the inverter. Here is how ...

### **What Size Inverter Should I Use for My 24V, 206Ah Battery Setup?**

A 2-3kW inverter is pretty standard for a 24V system. Just keep in mind that you don't want to pull over 100A from your battery if you can avoid it, as that can lead to higher ...





## Contact Us

---

For catalog requests, pricing, or partnerships, please visit:  
<https://talbert.co.za>