

# What kind of cells are used in double-glass modules







## Overview

---

Bifacial solar cells can be encapsulated in modules with either a glass/glass or a glass/ transparent backsheet structure. How do double glass solar panels work?

Construction: Double-glass modules consist of two layers of glass sandwiching the solar cells and other components. The glass layers are sealed together, encapsulating the solar cells and protecting them from environmental factors.

What is the difference between Raytech double glass solar modules?

Whereas for Raytech double-glass solar modules, with the increased strength brought by two layers of glass, a lot less deformation will happen in the solar cells, the possibility of microcracks formed on the solar cells will decrease significantly.

Why are double glass modules symmetrical?

Mechanical constraints on cells: the fact that the structure of the double glass modules is symmetrical implies that the cells are located on a so-called neutral line, the upper part of the module being in compression during a downward mechanical load and the lower glass surface being in tension.

Are double-glass solar modules reactive or non-reactive?

Furthermore, comparing to plastic backsheets (the back material of single-glass solar module) which are reactive, glass is non-reactive. This means that the whole structure of Raytech double-glass solar modules (two layers of glass and one layer of solar cells in the middle) are highly resistant to chemical reactions such as corrosion as a whole.

Why should you choose a double glass module?

Durability: Double-glass modules are more robust and resistant to environmental stressors, such as moisture, UV radiation, and temperature fluctuations. The dual glass layers provide enhanced protection against





physical damage, moisture ingress, and degradation over time.

What is a dual glass solar panel?

In contrast, dual-glass solar panels replace the backsheet with a second layer of tempered glass on the rear side of the module. The combined strength of using two sheets of glass makes the solar panel less prone to becoming deformed or for microcracks to form in the cells.





## What kind of cells are used in double-glass modules

---

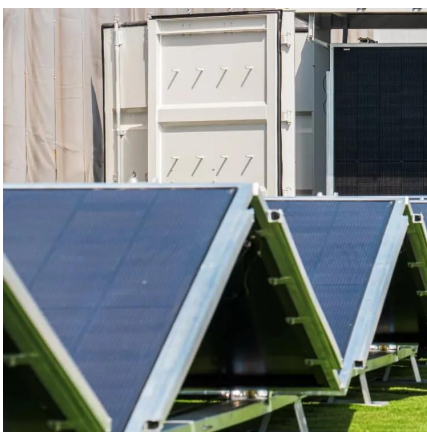
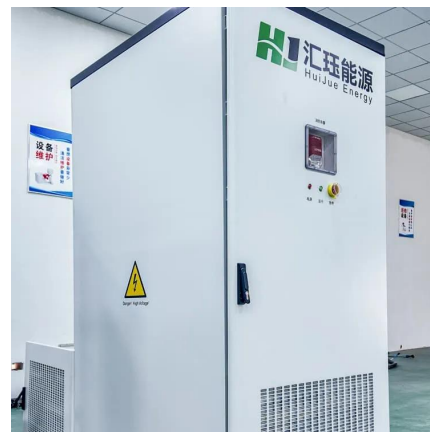


### What are the differences between single-glass and double-glass ...

As the first layer of materials in the solar module structure, tempered glass can effectively protect the panel and solar cells against physical stress, snow, wind, dust and ...

### The Difference Between Double-glass and Single ...

Construction: Double-glass modules consist of two layers of glass sandwiching the solar cells and other components. The glass layers are ...



### Experimental repair technique for glass defects of glass-glass

The PV modules with glass defects under test did not show internal defects in the PV cells, while the repaired specimens performed properly at each phase in the repair process ...

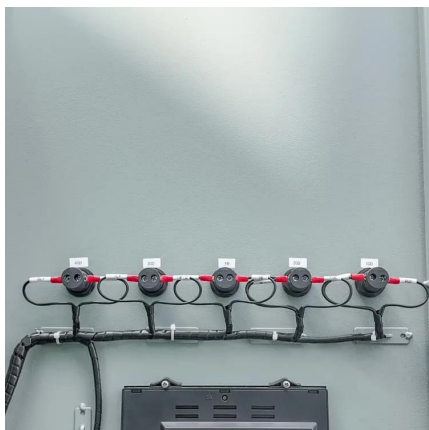
### [Double glass solar module , Maysun Solar](#)

Why Choose Double Glass Solar Modules? Glass-glass solar modules (bifacial modules) increase





energy production by approximately 2% to 5% compared to ...

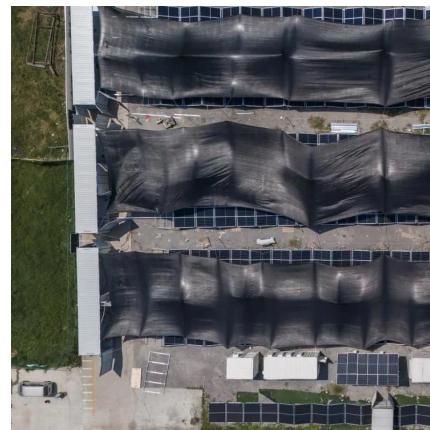


## The Difference Between Double-glass and Single-sided Glass ...

Construction: Double-glass modules consist of two layers of glass sandwiching the solar cells and other components. The glass layers are sealed together, encapsulating the ...

## Evo 6N N-type HJT Bifacial Double Glass 132 Half Cells 700 ...

N-Type HJT Bifacial Half Cell Double-glass Solar Module 23.66% Max. Module Efficiency



## Evo 6N N-type HJT 0BB Bifacial Double Glass 132 Half Cells ...

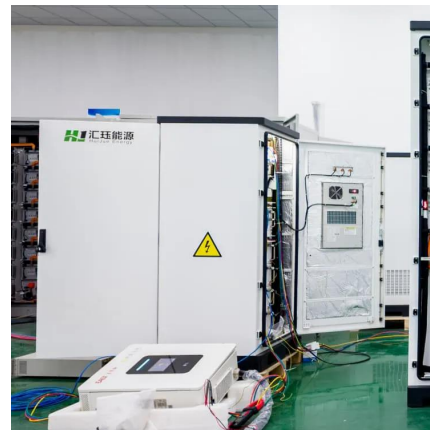
N-Type HJT Bifacial 0BB Half Cell Double-glass Solar Module 23.70%





## Why Dual-Glass is the best solar panel technology for ...

That's because nowadays, dual-glass solar modules use bifacial cells throughout, and this power is generated from both sides of the panel ...



## [A Comprehensive Guide to Bifacial Solar Panels](#)

Bifacial solar panels produce solar power from both sides and deliver up to 30% more energy, but are they worth it? Let's find out.

## 2025 Complete Guide to Glass-Glass Solar Panels: The Top ...

Glass-glass PV modules, also known as double glass solar panels, are photovoltaic modules encapsulated with tempered glass on both the front and back sides. Compared to traditional ...



## Single-glass versus double-glass: a deep dive into ...

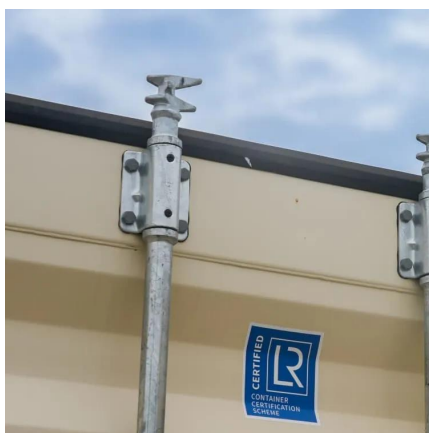
Double-glass modules, with their performance in the face of salt mist, high temperatures and high humidity, have won the market's favour. ...





## What are the advantages of dual-glass Dualsun modules?

Two types of photovoltaic module structures coexist: Glass-polymer film (also called glass-backsheet) type modules. They are made of glass on the front side and polymer film on the ...



## Glass breakage in large modules without external influence

The latter broke under a significantly lower load than the other module types. While the first glass-glass modules with thinner glass and the first glass-foil modules only showed cracks at more ...

## What is the structure of a double-sided double-glass n-type

The upper tempered glass mainly plays a protective role to prevent external factors from damaging the cell; the lower tempered glass serves as a backplane to allow light from the ...







## What are the differences between single-glass and double-glass ...

For Raytech double-glass solar modules, there are two layers of tempered glasses covering on both sides of the solar panel. The benefits of replacing the opaque backsheet with ...

## Single-glass versus double-glass: a deep dive into module ...

Double-glass modules, with their performance in the face of salt mist, high temperatures and high humidity, have won the market's favour. However, this trend is not ...



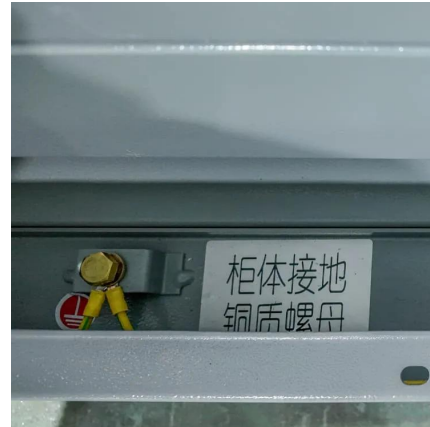
## INSTRUCTIONS FOR PREPARATION OF PAPERS

ABSTRACT: Double-glass modules provide a heavy-duty solution for harsh environments with high temperature, high humidity or high UV conditions that usually impact the reliability of ...

## Q CELLS Data sheet Q.PEAK DUO XL-G10.d-BFG 475-490 ...

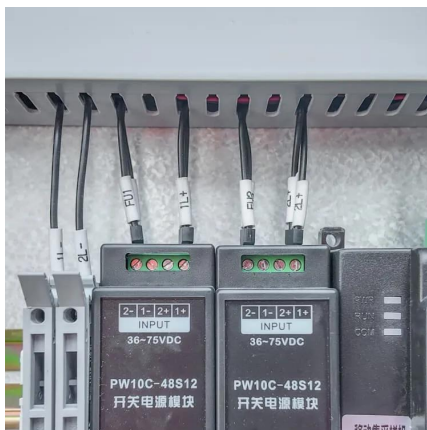
BIFACIAL DOUBLE GLASS MODULE WITH EXCELLENT RELIABILITY AND ADDITIONAL YIELD  
BIFACIAL ENERGY YIELD GAIN OF UP TO 20 %  
Bifacial Q.ANTUM solar cells with ...





## Single vs. double glass solar panels - which is better?

Disadvantages of double glass They may be heavier if the manufacturer used thicker glass (e.g. 2mm). Our 1.6mm front and back panels ...



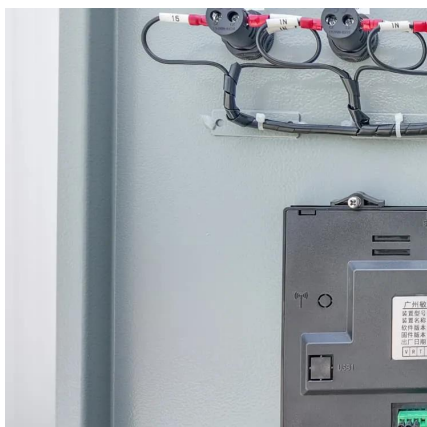
## What is the Double Glass Photovoltaic Solar Panel?

Glass-glass module structures (Dual Glass or Double Glass) is a technology that uses a glass layer on the back of the modules instead of the traditional ...



## [1Komma5° releases TOPCon module made with ...](#)

The company said its Full Black double-glass module, based on n-type TOPcon cell technology, has a conversion efficiency of 22.8%.







### What are Double Glass Solar Panels?

Double-glass solar modules are made up of two layers of tempered glass that cover both sides of the solar panel. As snow accumulates on a typical solar panel or people ...



### **Difference between Single-glass and Double-glass ...**

Double-glass or bifacial solar panels consist of two layers of tempered glass covering the front and rear sides of the panel. A layer of encapsulant ...

### **For N-type Bifacial Technology, Dual Glass Structure is Preferred**

Bifacial solar cells can be encapsulated in modules with either a glass/glass or a glass/transparent backsheet structure.



### **Why Dual-Glass is the best solar panel technology for rooftops**

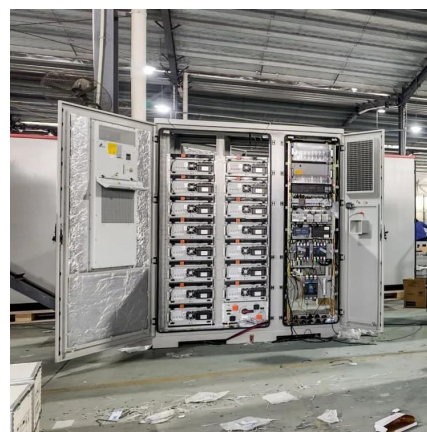
That's because nowadays, dual-glass solar modules use bifacial cells throughout, and this power is generated from both sides of the panel instead of just one.





## 2025 Complete Guide to Glass-Glass Solar Panels: ...

Glass-glass PV modules, also known as double glass solar panels, are photovoltaic modules encapsulated with tempered glass on both the front and ...



## Degradation of Monofacial Double Glass and Glass ...

However, there are limited studies comparing double glass and glass-backsheet modules using POE encapsulant with rigorous variable control [6]. Commercial modules of selected brands ...

## What are the differences between single-glass and ...

As the first layer of materials in the solar module structure, tempered glass can effectively protect the panel and solar cells against ...







### What are Double Glass Solar Panels?

Bifacial solar cells can be encapsulated in modules with either a glass/glass or a glass/transparent backsheet structure.

### Double the strengths, double the benefits

In the ever-evolving world of photovoltaic technology, double glass solar modules are emerging as a game-changer. By encapsulating solar cells ...



### Double the strengths, double the benefits

In the ever-evolving world of photovoltaic technology, double glass solar modules are emerging as a game-changer. By encapsulating solar cells between two layers of glass, ...

## Contact Us

For catalog requests, pricing, or partnerships, please visit:  
<https://talbert.co.za>