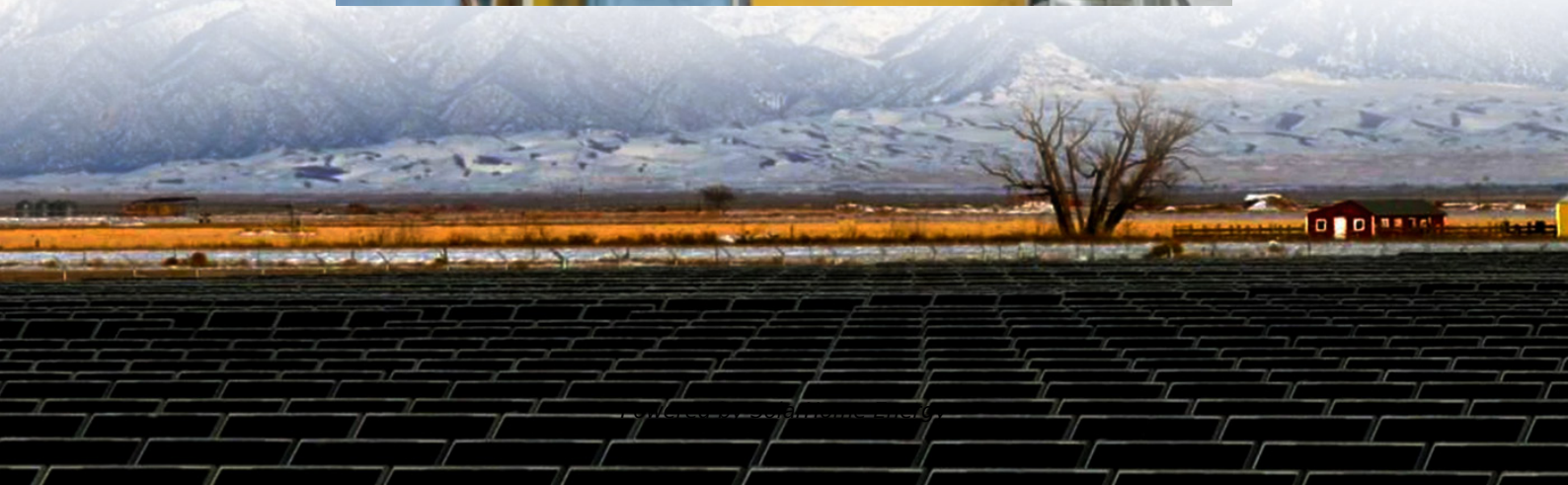


# **What kind of battery is used to power communication base stations**





## Overview

---

What type of battery chemistry does a portable power station use?

Portable power stations use two main types of battery chemistry: lead-acid batteries and lithium batteries. Lead-acid batteries, specifically Absorbent Glass Matting (AGM) varieties, are commonly found in cars for starting purposes.

Which battery is best for telecom base station backup power?

Among various battery technologies, Lithium Iron Phosphate (LiFePO<sub>4</sub>) batteries stand out as the ideal choice for telecom base station backup power due to their high safety, long lifespan, and excellent thermal stability.

Are lithium-ion batteries a good choice for a telecom system?

Lithium-ion batteries have rapidly gained popularity in telecom systems. Their efficiency is unmatched, providing higher energy density compared to traditional options. This means they can store more power in a smaller footprint.

What type of battery does a telecom system need?

Beyond the commonly discussed battery types, telecom systems occasionally leverage other varieties to meet specific needs. One such option is the flow battery. These batteries excel in energy storage, making them ideal for larger installations that require consistent power over extended periods.

Why do telecom systems need batteries?

Telecom systems play a crucial role in keeping our world connected. From mobile phones to internet service providers, these networks need reliable power sources to function smoothly. That's where batteries come into play. They ensure that communication lines remain open, even during outages or emergencies. But not all batteries are created equal.



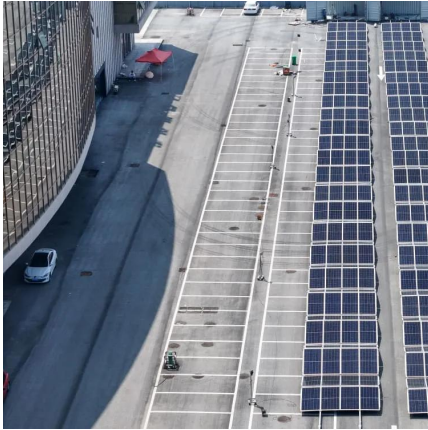
What makes a telecom battery pack compatible with a base station?

Compatibility and Installation Voltage Compatibility: 48V is the standard voltage for telecom base stations, so the battery pack's output voltage must align with base station equipment requirements. Modular Design: A modular structure simplifies installation, maintenance, and scalability.



## What kind of battery is used to power communication base stations

---

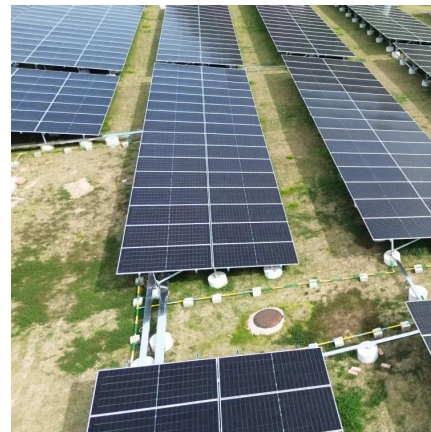


### Battery technology for communication base stations

In order to ensure the reliability of communication, 5G base stations are usually equipped with lithium iron phosphate cascade batteries with high energy density and high charge and ...

### [Communication Base Station Energy Solutions](#)

The Importance of Energy Storage Systems for Communication Base Station With the expansion of global communication networks, especially the ...



### [High-Capacity Batteries in the Telecom Industry](#)

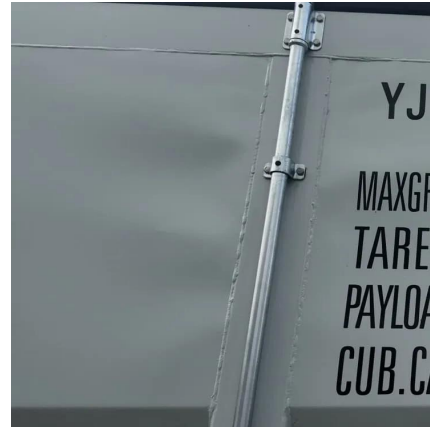
High-capacity batteries play an essential role in the telecommunications industry, ensuring smooth operations by powering core infrastructure. They're critical during power outages, keeping ...

### Telecom Base Station Backup Power Solution: Design ...

With the rapid expansion of 5G networks and the continuous upgrade of global communication



infrastructure, the reliability and stability of ...

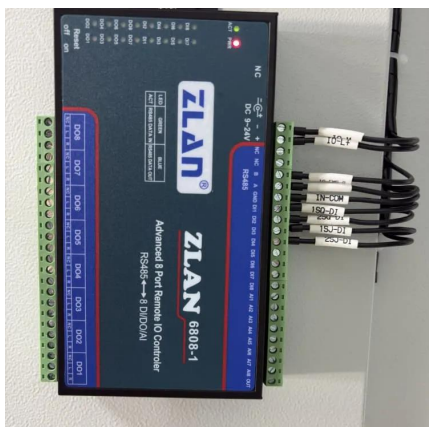


## Communication base station

Through the use of tower storage batteries, communication base stations can effectively reduce the additional costs caused by grid fluctuations, power ...

## Global Communication Base Station Battery Trends: Region ...

The Communication Base Station Battery market is experiencing robust growth, driven by the expanding deployment of 5G and 4G networks globally. The increasing demand ...



## What is a base station energy storage battery? , NenPower

Base station energy storage batteries offer vital support to enhance the stability of both telecommunications and electrical grids. During power outages or disruptions, these ...





## Types of Batteries Used in Telecom Systems: A Guide ...

Lithium-ion batteries have rapidly gained popularity in telecom systems. Their efficiency is unmatched, providing higher energy density ...

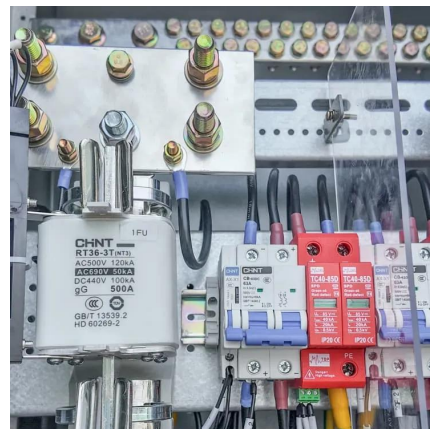


## [Battery Management Systems for Telecom Base ...](#)

Telecom base stations are strategically distributed across urban, suburban, and remote locations to provide uninterrupted wireless service. ...

## Use of Batteries in the Telecommunications Industry

Both Telecom dc plant and Data Center UPS are considered "Standby Power" Non cycling - 99% of time in "float condition" Batteries only used when commercial power is lost Energy Storage ...



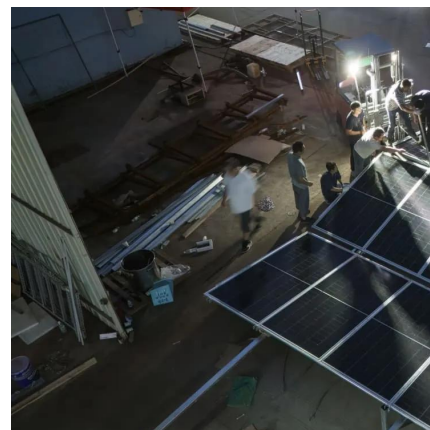
## What are base station energy storage batteries used for?

WHAT TYPE OF BATTERIES ARE USED IN BASE STATIONS? Base stations typically utilize varying types of batteries, with lead-acid batteries and lithium-ion batteries ...



## Optimization of Communication Base Station Battery ...

In the communication power supply field, base station interruptions may occur due to sudden natural disasters or unstable power supplies. This work studies the optimization of ...



## What Powers Telecom Base Stations During Outages?

Telecom batteries for base stations are backup power systems using valve-regulated lead-acid (VRLA) or lithium-ion batteries. They ensure uninterrupted connectivity ...

## Evaluating the Dispatchable Capacity of Base Station Backup Batteries

Cellular base stations (BSs) are equipped with backup batteries to obtain the uninterruptible power supply (UPS) and maintain the power supply reliability. While maintaining the reliability, ...





## What Are the Key Considerations for Telecom Batteries in Base Stations?

Telecom batteries for base stations are backup power systems that ensure uninterrupted connectivity during grid outages. Typically using valve-regulated lead-acid ...

## Telecom Base Sites , Hybrid Energy Mobile Wireless Station

Discover the power of our Hybrid Energy Mobile Wireless Station, offering seamless, energy-efficient telecom base site solutions. Designed for versatility with solar, wind, and diesel ...



## Types of Batteries Used in Telecom Systems: A Guide

Lithium-ion batteries have rapidly gained popularity in telecom systems. Their efficiency is unmatched, providing higher energy density compared to traditional options. This ...

## Base Stations

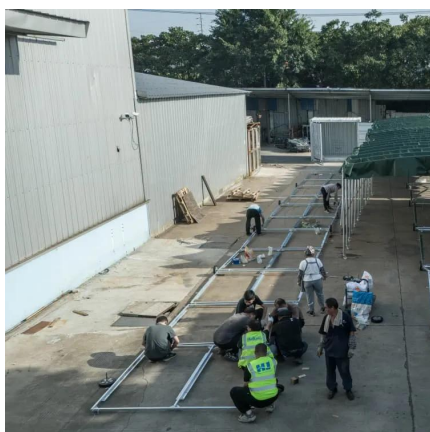
The present-day tele-space is incomplete without the base stations as these constitute an important part of the modern-day scheme of wireless ...





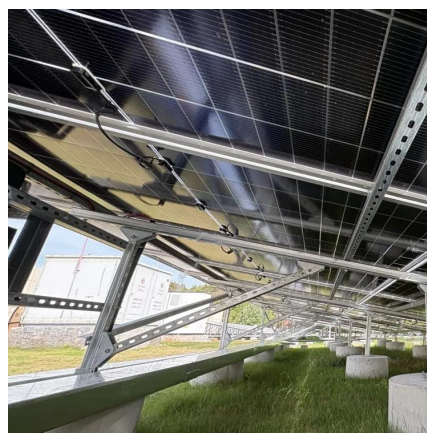
## Which Batteries Can Be Used as Backup Power Sources for ...

Several types of batteries can be used as backup power sources for communication base stations. The choice of battery depends on factors such as the power requirements of the base ...



## Telecom Base Station Backup Power Solution: Design ...

Among various battery technologies, Lithium Iron Phosphate (LiFePO<sub>4</sub>) batteries stand out as the ideal choice for telecom base station ...



## Communication base station

Through the use of tower storage batteries, communication base stations can effectively reduce the additional costs caused by grid fluctuations, power outages or electricity bill spikes.



## Selection and maintenance of batteries for communication base ...

Focused on the engineering applications of batteries in the communication stations, this paper introduces the selections, installations and maintenances of batteries for communication ...



## What are base station energy storage batteries used for?

WHAT TYPE OF BATTERIES ARE USED IN BASE STATIONS? Base stations typically utilize varying types of batteries, with lead-acid ...

## Telecom Base Station Backup Power Solution: Design Guide for ...

Among various battery technologies, Lithium Iron Phosphate (LiFePO<sub>4</sub>) batteries stand out as the ideal choice for telecom base station backup power due to their high safety, ...



## Which Batteries Can Be Used as Backup Power Sources for Communication

Several types of batteries can be used as backup power sources for communication base stations. The choice of battery depends on factors such as the power requirements of the base ...



### Power system of PRU communication base station

The charging unit, the battery, the voltage transformation unit and a relay are sequentially connected. The main control unit is connected with the voltage transformation unit and the ...



### **Communication base station**

Communication base stations are one of the core nodes of modern communication networks and require uninterrupted power supply to maintain ...

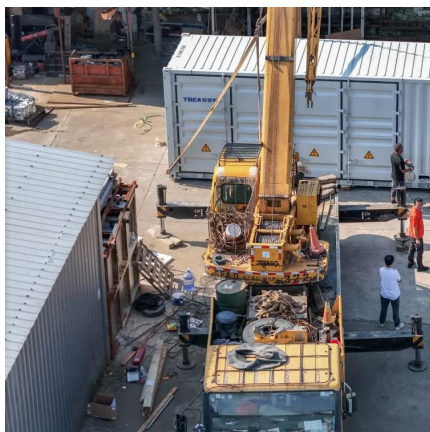


### **What Are the Key Considerations for Telecom Batteries in Base ...**

Telecom batteries for base stations are backup power systems that ensure uninterrupted connectivity during grid outages. Typically using valve-regulated lead-acid ...







## Lithium Battery for Communication Base Stations Market

The global Lithium Battery for Communication Base Stations market is poised to experience significant growth, with the market size expected to expand from USD 3.5 billion in 2023 to an ...

## Selection and maintenance of batteries for communication base stations

Focused on the engineering applications of batteries in the communication stations, this paper introduces the selections, installations and maintenances of batteries for communication ...



## What is a base station energy storage battery?

Base station energy storage batteries offer vital support to enhance the stability of both telecommunications and electrical grids. During power ...

## Contact Us

---

For catalog requests, pricing, or partnerships, please visit:  
<https://talbert.co.za>