

What is the size of a 540W photovoltaic panel





Overview

The 540W solar panel size is 90 × 50 × 1.15 inches, making it a compact yet powerful solution for your solar energy needs. How big is a 540w solar panel?

The 540W solar panel size is 90 × 50 × 1.15 inches, making it a compact yet powerful solution for your solar energy needs. How do bifacial solar panels perform in Canada?

Bifacial solar panels in Canada are highly efficient due to the reflective surfaces, such as snow, which can increase energy output by up to 30%.

How much does a 540w bifacial solar panel weigh?

Lightweight and Compact: Despite its high power output, this 540W solar panel weighs just 80 lbs and has dimensions of 90 × 50 × 1.15 inches, making it easy to install on a variety of surfaces. Why Choose the Canadian Solar 540W Bifacial Solar Module?

.

How many cells are in a 540 watt solar panel?

To give you an idea, a standard 540 watt solar panel is approximately 88 x 46 inches and tips the scales at around 72 pounds. Most modules with this output rating are monocrystalline and typically have at least 72 cells (144 half-cut cells). Efficiencies vary widely from brand to brand, but most monocrystalline options fall into 18–22% range.

What is a 540w half cut solar panel?

A 540W Half-Cut Solar Panel refers to a photovoltaic panel that has a power output of 540 watts and employs a "half-cut" cell design. In a half-cut design, the solar cells on the panel are divided into two halves, which are then wired in series.

What is a 540 watt solar module?



540W Power Output: With a powerful 540-watt output, this solar module provides an excellent energy solution for large-scale installations, making it a top choice among Canadian solar panels.

What is the warranty on 540 W solar panels?

Installing 540 W solar panels is simple enough, despite their larger size compared to standard panels. They typically come with a 25-year warranty, though some higher-end brands offer 30-year protection. Use our solar calculator to determine the optimal size for your installation.



What is the size of a 540W photovoltaic panel

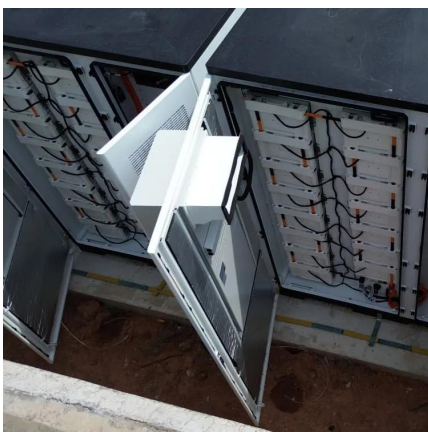


[550W Monocrystalline Solar Panel. WCCSOLAR](#)

Description The 550W monocrystalline solar panel Types of solar panel High efficiency 144 cells, it is one of the most powerful in the 24V range for use in 12 volt solar installations, 24 volt solar ...

540W Solar Panel Mono PERC Half Cell China Manufacturer

What Is The Best Mono 540w Solar Panel Price? The price for a 540 Watts Solar Panel will depend on how many you order and when you place your order. China's solar module raw ...



Canadian Solar - 540W Monocrystalline Bifacial Solar PV Module

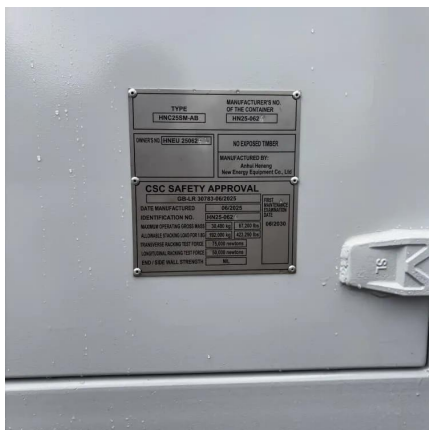
What is the size of the Canadian Solar 540W bifacial solar panel? The 540W solar panel size is 90 × 50 × 1.15 inches, making it a compact yet powerful solution for your solar energy needs.

Luminous Power Technologies , MonoPERC Half Cut ...

Luminous Power Technologies Pvt. Ltd. Solar Panel Series MonoPERC Half Cut Panel Series



(540/550W). Detailed profile including pictures, certification ...



Buy UTL 540W 24V Mono PERC Solar Panel at Best ...

UTL 540 Watt 24 Volt Solar Panel: Mono PERC, Positive Tolerance of up to 4%, Solar cell efficiency up to 21.2%, Module Efficiency up to 18%.

144 Half Cells 540-560W Solar Panel

Evo 5 Series 144 Half Cells Solar Panel PERC Half Cell 540W 540W 550W 555W 560W Solar PV Module Max. Efficiency: 21.9% Number of Cells: 144 Cells (6x24) Dimensions : 2278 x 1134 x ...



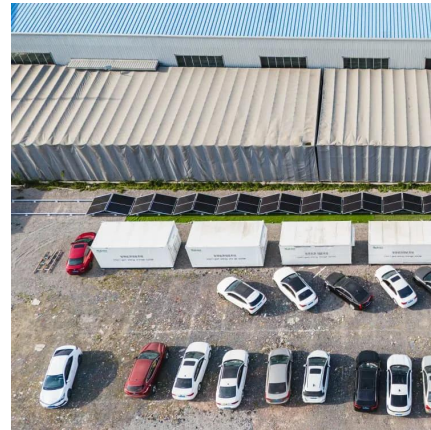
Datasheet

Bifacial PV Modules MBB P-Type PERC Half-cut ASB-M10-144-AAA (AAA=520-545) , 144 Cells ,520-545 Wp



540 Watt Solar Panels

To give you an idea, a standard 540 watt solar panel is approximately 88 x 46 inches and tips the scales at around 72 pounds. Most modules with this output rating are ...

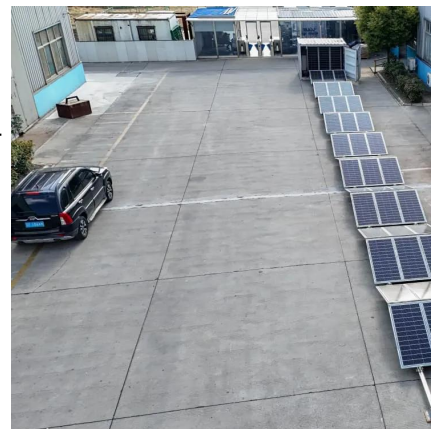


Standard Solar Panel Sizes And Wattages (100W-500W ...

The goal here is to get to the average solar panel size by wattage. You can find typical dimensions of 100W, 150W, 170W, 200W, 200W, 220W, 300W, 350W, 400W, and 500W solar ...

Bluebird 540 Watt Half Cut Solar Panels

What is 540W Half Cut Solar Panels? A 540W Half-Cut Solar Panel refers to a photovoltaic panel that has a power output of 540 watts and employs a "half-cut" cell design. In a half-cut design, ...



Amazon : Adani Solar Panel 540 Watt

Fujiyama Solar Panel 540W (Pack of 2) Mono 144 Cells Dual Glass Mono Solar Panels , 27 Years Performance Warranty , Homes, Businesses, On/Off-Grid and Hybrid Solar System, IP68 ...



540 Watt Solar panels for sale , Prices, dimensions, weight, ...

JF Solar 540 Watt Region: China Features: Panel
Dimension: 2279x1134x35 mm Inventory:
Production on demand View Product Download
PDF



[540W photovoltaic panel specifications and models](#)

What is the size of a 540W solar panel in feet?
The 540W solar panel typically measures
approximately: Length: 2285 mm (about 7.5
feet) Width: 1140 mm (about 3.7 feet) Thickness:

JA Solar 540W mono

Their 540W monocrystalline solar panel is one of
the highest wattage panels available in the
market, featuring 210mm x 210mm silicon
wafers and MBB (multi-busbar) technology for ...





WAAREE 530 Watt Halfcut Mono Perc Bifacial Solar Panel

Buy WAAREE 530 Watt Halfcut Mono Perc Bifacial Solar Panel for Rs.14000 online. WAAREE 530 Watt Halfcut Mono Perc Bifacial Solar Panel at best prices with FREE shipping & cash on ...

JA Solar 540W Bifacial Solar Panel

540W bifacial panel with backside gain and PERC tech--ideal for off-grid or backup solar systems.



[Standard Solar Panel Sizes And Wattages \(100W ...](#)

The goal here is to get to the average solar panel size by wattage. You can find typical dimensions of 100W, 150W, 170W, 200W, 200W, 220W, 300W, 350W, ...

[144 Half Cells 540-560W Solar Panel](#)

Evo 5 Series 144 Half Cells Solar Panel PERC Half Cell 540W 540W 550W 555W 560W Solar PV Module Max. Efficiency: 21.9% Number of Cells: 144 Cells ...



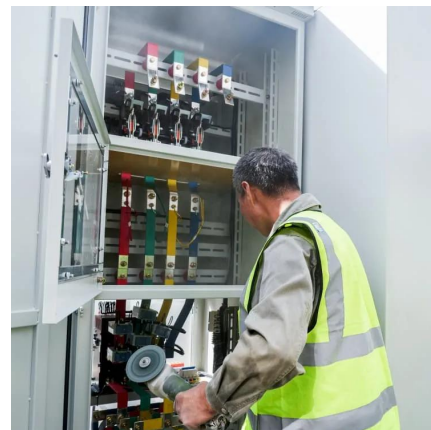
540W Bifacial Mono PERC Solar Panel

Our compact, 89.69 x 44.65 x 1.38-inch solar panel is easy to install and fits seamlessly into any environment. Upgrade your energy system with our powerful 540W monocrystalline solar panel.



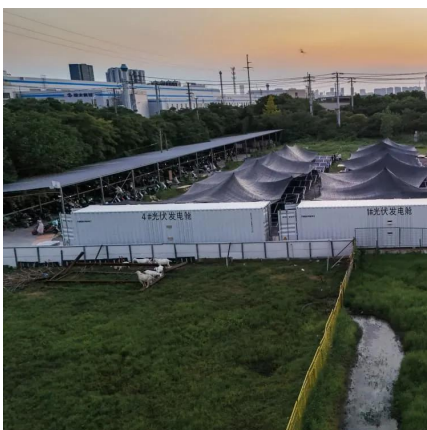
Mono-Perc-Halfcut Solar Panel , 24V Capacity , 540 Wp Power

Discover Livguard's Mono-Perc-Halfcut Solar Panel , 24V Capacity , 540 Wp Power for your home/business solar energy needs.



Solar Panel Power Calculator

Solar Panel Calculator is an online tool used in electrical engineering to estimate the total power output, solar system output voltage and current when the number of solar panel units ...





Photovoltaic 540 Panel Size and Weight Key Insights for Solar ...

Understanding the photovoltaic 540 panel size and weight helps optimize solar system design for space efficiency and structural safety. With advancing technologies and proper installation ...



Canadian Solar - 540W Monocrystalline Bifacial Solar ...

What is the size of the Canadian Solar 540W bifacial solar panel? The 540W solar panel size is 90 × 50 × 1.15 inches, making it a compact yet powerful ...

[550W/24V Mono Perc Halfcut Solar Panel](#)

Shop the 550W/24V Mono Perc Halfcut Solar Panel online from Luminous. Get reliable power backup with high efficiency and advanced technology. Shop ...



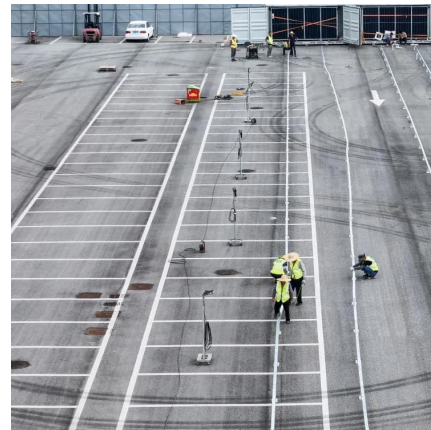
First Solar , Series 7 TR1 505-540W , Solar Panel ...

First Solar, Inc. Solar Panel Series Series 7 TR1 505-540W. Detailed profile including pictures, certification details and manufacturer PDF



Canadian Solar 540W Solar Panel 144 Cells Bifacial ...

Canadian Solar 540W Solar Panel 144 Cells
Bifacial CS6W-540MB-AG Commercial 560 panels
per Container (Truckload) \$0 /panel ...



540W Bifacial Mono PERC Solar Panel

Our compact, 89.69 x 44.65 x 1.38-inch solar panel is easy to install and fits seamlessly into any environment. Upgrade your energy system with our ...

JA SOLAR540W SOLAR PANEL

Overall, the JA Solar 540W mono panel is a high-quality, efficient solar module that can be a good choice for residential and commercial solar installations. However, it's always important to ...





Contact Us

For catalog requests, pricing, or partnerships, please visit:
<https://talbert.co.za>