

What is the rated power of photovoltaic panels





Overview

What is the wattage rating of a solar panel?

The Wattage rating of a solar panel is the most fundamental rating, representing the maximum power output of the solar panel under ideal conditions. You'll often see it referred to as "Rated Power", "Maximum Power", or "Pmax", and it's measured in watts or kilowatts peak (kWp).

What is a power rating for solar panels & inverters?

The power rating for solar panels and inverters provides valuable data for various applications throughout the PV system lifecycle. Solar installers use rated power to calculate the number of panels and the proper inverter size needed to meet a project's energy requirements.

What is the efficiency rating of a solar panel?

Most solar panels have an efficiency rating between 17%-23%. A solar panel with a 21% efficiency rating means it converts 21% of the sun's energy striking it into electricity. Do not confuse the efficiency rating with the rated output. A 23% efficiency rating does not mean the panel will only produce 23% of its rated output in watts.

What does a solar panel power rating mean?

While power ratings are designed to indicate the power potential of a solar panel, efficiency ratings are another important indicator of the panel's overall quality. Efficiency ratings continue to improve, but currently, they tend to range between 15% and 20%.

What is rated power?

Rated power definition: also known as the power rating, indicates how much power an appliance (like a solar panel) can generate under ideal test conditions. This specification details the maximum power output the manufacturer designed the solar panel to deliver.



Are solar panels rated in watts more powerful?

As you would expect, the higher the solar panel is rated in watts, the more powerful it is. These higher efficiency solar panels can produce more DC electricity in the same amount of space as similarly sized solar panel with a lower power rating.



What is the rated power of photovoltaic panels

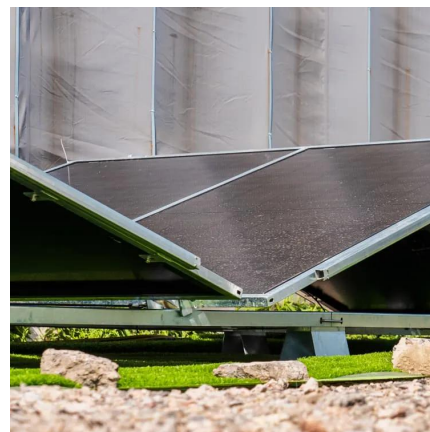


What Does Rated Power Mean for Solar Panels? , EcoFlow US

In simple terms, rated power refers to how much electricity a solar panel can generate in optimal conditions. In other words, the solar panel would generate power at the levels the rating ...

What is rated power and how is it used in solar design?

Rated power definition: also known as the power rating, indicates how much power an appliance (like a solar panel) can generate under ideal test conditions. This specification ...



[Best Solar Panels: Which One Should You Choose?](#)

Choosing the best solar panel can feel overwhelming, but it's easier than you think. A quality solar installer will typically install quality solar panels, ...

Power rating and qualification of bifacial PV modules

Abstract The extra energy gain offered by bifacial PV modules has helped make them an



increasingly popular choice in the global PV industry. But the question of how to define, ...



The fundamentals of floating solar plants -- RatedPower

Floating systems need extra engineering considerations compared to land-based systems, like anchoring, floatation, and water protection. What are the advantages of floating ...

Nominal power (photovoltaic)

Nominal power (or peak power) is the nameplate capacity of photovoltaic (PV) devices, such as solar cells, modules and systems. It is determined by measuring the electric current and ...



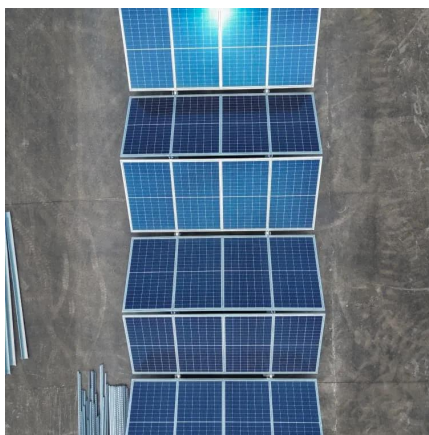
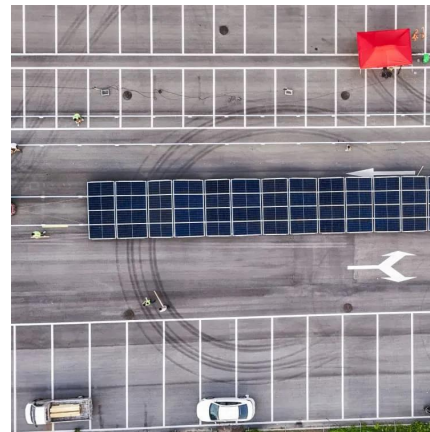
A Guide to solar panel ratings

To calculate a more realistic maximum power output rating for any given solar panel, first locate the Nominal Operating Cell Temperature (NOCT) and the Temperature Coefficient of Pmax on ...



Solar Panel Wattage & Output Explained

Solar panel wattage and solar panel output ratings show how much energy solar power systems can produce under ideal conditions.



Analysis of specifications of solar photovoltaic panels

The use of photovoltaic power plants is rapidly expanding, despite the continued growth in the production of traditional mineral resources. This paper analyses photovoltaic ...

What is the solar panel peak power? Watt peak definition

Solar panel peak power is the maximum electrical power that a photovoltaic panel can generate under certain conditions.



Solar Panel Ratings - Everything You Need to Know

The article discusses solar panel power ratings, explaining that most panels are rated in watts and range from 100W to 400W. It clarifies that this rating ...



[Solar Panel Ratings - Everything You Need to Know](#)

The article discusses solar panel power ratings, explaining that most panels are rated in watts and range from 100W to 400W. It clarifies that this rating represents the panel's expected power ...



[What Does Rated Power Mean for Solar Panels?](#)

In simple terms, rated power refers to how much electricity a solar panel can generate in optimal conditions. In other words, the solar panel would generate ...

Solar Panel Rated vs. Actual Output - Why is it Lower?

One of the key terms you need to understand when choosing solar panels is Rated Power. This is the maximum amount of electricity a solar ...





Solar Panel Ratings Explained

The Wattage rating of a solar panel is the most fundamental rating, representing the maximum power output of the solar panel under ideal ...

Solar Panel Output Explained

Solar panel output measures the electricity a solar panel produces from sunlight. It's expressed in watts or kilowatt-hours (kWh) and directly impacts your energy savings. The ...



A Guide to solar panel ratings

Standard Test Conditions A solar panel is initially tested in a factory under controlled settings. As the solar panel comes off the production line, the panel is exposed to artificial sunlight. There ...

Solar Panel Rated vs. actual (Interesting!)

Most have an efficiency rating. For example, a microinverter with a 96% efficiency rating means that if your solar panel produces 300 watts, only 96% of those watts will pass ...



[How To Calculate Solar Panel Output](#)

The benefits of solar energy are numerous, but building your own solar power system requires advanced planning to ensure it meets your family's unique ...



What is peak power and what is it used for? -- ...

This is due to a number of factors, with weather being the biggest detractor from solar panel peak power. Each change in temperature, cloud ...



What Does Rated Power Mean for Solar Panels? And Why It ...

One of the key terms you need to understand when choosing solar panels is Rated Power. This is the maximum amount of electricity a solar panel can capture under ideal ...





How to Calculate Solar Panel KWp (KWh Vs. KWp

In simple terms, KWp refers to the maximum power output capability of a solar panel or solar system. Each solar panel is assigned a ...

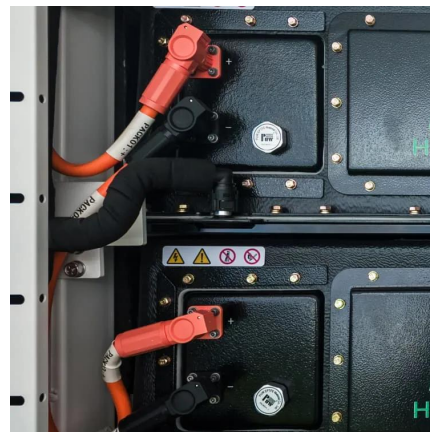


Solar Panel Specification

A quick glance at a solar panel's specification sheet will reveal the power generation and conversion efficiency of a system. If you don't know what the numbers mean, it may as well be ...

Solar Panel Rated vs. Actual Output - Why is it Lower?

Solar panel production is affected by several factors including efficiency rating, orientation, dirt and the angle of the sun. Solar panels with high efficiency and capacity ratings will produce at ...



Solar Basics: Voltage, Amperage & Wattage , The Solar Addict

Understanding Voltage, Amperage, and Wattage in Solar Panels Solar power has become an increasingly popular and accessible energy solution for both residential and ...



[The 9 most powerful solar panels \[2025\]](#)

Here are the most powerful solar panels currently available, with all the analysis you need to pick the best model for your home.



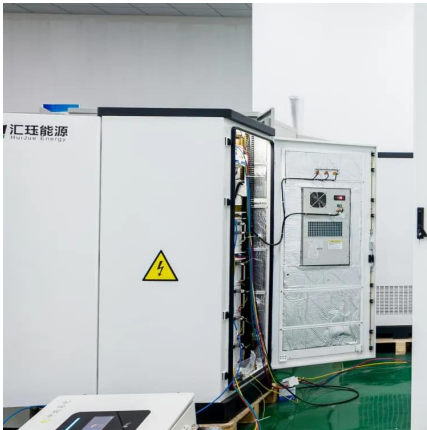
How to Calculate Solar Panel KWp (KWh Vs. KWp + Meanings)

In simple terms, KWp refers to the maximum power output capability of a solar panel or solar system. Each solar panel is assigned a KWp rating by the manufacturer, ...

Understanding Solar System Ratings

Every solar panel has a published power rating. This is its rated power under Standard Test Conditions (STC). If you add up the rated power for all of the panels, then you get the peak ...



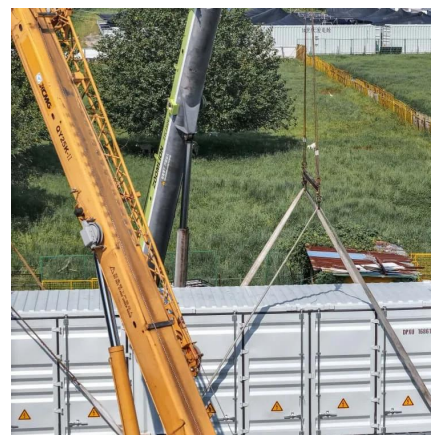


Solar Panel Ratings Explained

The Wattage rating of a solar panel is the most fundamental rating, representing the maximum power output of the solar panel under ideal conditions. You'll often see it ...

Solar Panel Rated vs. actual (Interesting!)

Most have an efficiency rating. For example, a microinverter with a 96% efficiency rating means that if your solar panel produces 300 watts, only ...



Contact Us

For catalog requests, pricing, or partnerships, please visit:
<https://talbert.co.za>