

What is the length and width of the 660 solar photovoltaic panel





Overview

What are the physical dimensions of a solar panel?

Physical dimensions refer to the height, length and width of the solar array. The wattage refers to how much power the panel can produce. Regular solar panels come in 60 cell panels or 72 cell panels. Each cell is 6 x 6 inches square. 72 cell panels are taller by 12 inches. The average solar panel is 5.4 x 3.25 feet or 65 inches by 39 inches.

How big are residential solar panels?

Most residential solar panels are 1.7m tall x 1.0m wide (or 1.7 m²), with a maximum power output of around 330W. Solar panels also come with 72 solar cells, which are larger to accommodate the additional cells. They are around 30% larger than residential solar panels, measuring approximately 2.1m tall x 1.1m wide (or 2.3 m²).

How thick should solar panels be?

The only useful thing that we get from this is depth or height (panel thickness): Most solar panels are about 1.5 inches thick. Alright, let's have a look at the length and width of typical solar panels, with wattage (very important), and complete with area or square footage (useful when calculating how many solar panels you can fit on a roof):.

How does solar panel size affect a home?

Solar panel size directly affects: Choosing the right dimensions ensures that your system fits your space while generating enough electricity to meet your needs. Let's explore the most common solar panel size dimensions available today: 1. Residential Solar Panels These are the most popular panels for homes. 2. Commercial Solar Panels.

What size solar panel do I Need?

Answer: For residential use, the best solar panel size generally falls around 65



x 39 inches. These dimensions are designed to fit typical roof spaces while providing a good balance of efficiency and energy production. However, the ideal size for your home will depend on your roof space, energy needs, and budget.

How many Watts Does a portable solar panel generate?

Portable solar panels are smaller, often half the size of regular solar arrays. Solar panels for homes average 250 to 400 watts. Many portable solar panels for RV are in the 100 to 300 watt range. The physical size of the panels often correlate to the watts, the bigger the panels the more watts it can generate.



What is the length and width of the 660 solar photovoltaic panel



Longi/Ja/Jinko/My Solar Tier 1 Higher Efficiency Big ...

The main difference of the solar panel price is between Tier 1 Solar Panel and not Tier 1 Solar Panel. If you order the mainstream solar panel --- cell size ...

What is the length and width of photovoltaic solar ...

What is the length and width of photovoltaic solar panels? Photovoltaic solar panels generally come in standardized dimensions, with ...



660 watt solar panel for sale , Buy online for home, boat and RV

660-watt panels are compact yet powerful. Their standard dimensions are: Width: approximately 2 meters (6.56 feet). Height: approximately 1 meter (3.28 feet). Compared to ...

Understanding Solar Panel Dimensions In 2025: A ...

Explore the most common solar panel dimensions in 2025, including residential and



commercial sizes. Learn how solar panel size ...



Solar Panel Sizes, Dimensions & Weight , Solar Choice

Standard residential solar panels contain 60 solar cells (or 120 half-cut solar cells) and typically generate anywhere from 350W to 500W of ...

Complete Guide to Solar Panel Size

The amount of solar cells that a panel has determines the size, the most common panel sizes are 60-cell and 72-cell.



660 Watt Solar panels for sale , Prices, dimensions, weight, ...

Region: China Features: High efficiency (high output) / High Power (High wattage) / Low Light Irradiance / Lower Temperature Coefficient / Monocrystalline / Severe Weather Resistant ...



[Solar Panel Size Guide \(with 4 Charts\)](#)

660-watt panels are compact yet powerful. Their standard dimensions are: Width: approximately 2 meters (6.56 feet). Height: ...

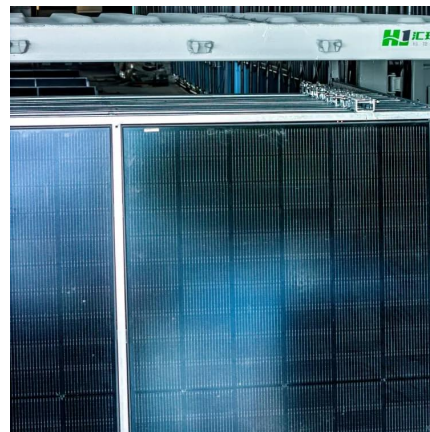


[Solar Panels Sizes and Weights \(All Sizes\)](#)

On average, a solar panel can provide 15 watts per square foot. Let's start by breaking down the average dimensions of different solar panels by size.

[Solar Panel Size Guide \(with 4 Charts\)](#)

Solar panel sizes are measured in two ways: watt output and physical dimensions. Physical dimensions refer to the height, length and width of the solar array. The wattage refers to how ...



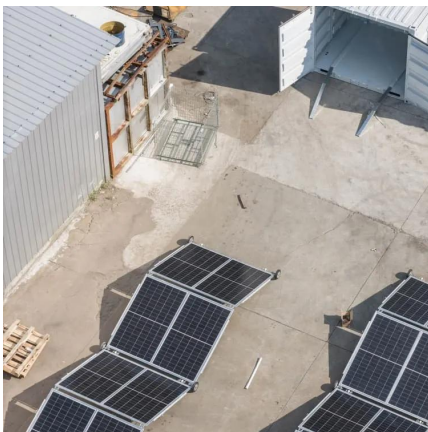
[How to Size a Solar System \[Step-by-Step Guide\]](#)

Learn how to size a solar system for your home. Here's our step-by-step guide on sizing a solar system that meets your energy needs.



We Analyzed 100 Solar Panels: Dimensions, ...

Typical Solar Panel Dimensions: Exploring Length, Width, and Depth We've reviewed solar panel dimensions from various manufacturers. By analyzing ...



Understanding Solar Panel Size for Optimal Solar ...

Learn how solar panel size impacts efficiency and performance. Discover key factors to consider for choosing the optimal size for your solar power solutions.

660 Solar photovoltaic panel size

Standard residential solar panels measure 66 inches by 40 inches, or a little over 5 feet long and 3 feet wide. Each panel therefore takes up around 18 square feet.





Photovoltaic Panel 660W: Key Dimensions and Industry Insights

Most 660W photovoltaic panels measure approximately 1,640-2,384 mm in length and 992-1,303 mm in width, with thickness ranging from 35-40mm. These dimensions vary across ...

Standard Solar Panel Sizes And Wattages (100W-500W Dimensions)

Alright, let's have a look at the length and width of typical solar panels, with wattage (very important), and complete with area or square footage (useful when calculating how many solar ...



[Solar Panel Size Chart - SizeChartly](#)

Solar panels come in various standard sizes, typically measured in inches or millimeters. These sizes can significantly influence their compatibility with different mounting systems and roof ...

Solar Rooftop Calculator: How Many Solar Panels ...

Here is how you can use this solar rooftop calculator to determine the solar system size and number of 100-watt, 300-watt, or 400-watt solar panels you ...



The best solar panel size guide every homeowner needs

Learn how to choose the ideal solar panel size for your home with charts, standard dimensions, and tips to calculate size per kW in this complete guide.



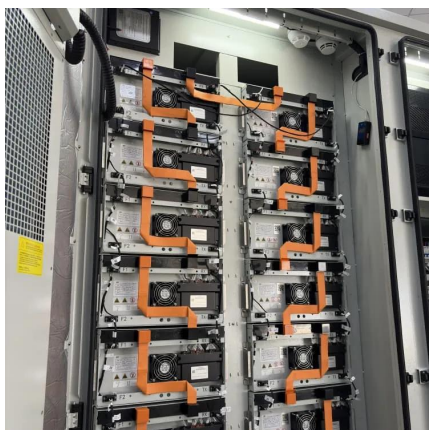
What is the length and width of photovoltaic solar ...

Inadequate knowledge regarding the dimensions and features of photovoltaic solar panels can lead to suboptimal energy generation and ...



[Solar Panel Dimensions: What You Need to Know ...](#)

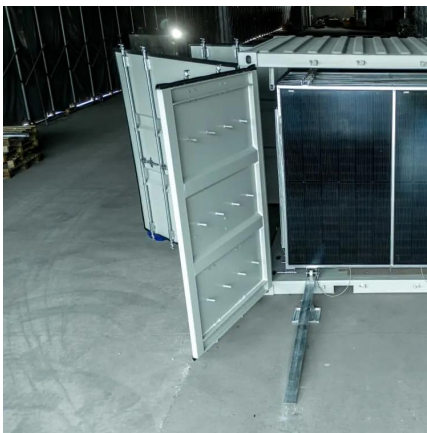
Discover the ideal solar panel sizes for your installation. Learn about common dimensions, types of panels, and space requirements for ...





600 Watt Solar Panels Technical Specs & Installation

A 600-watt solar panel is a solar photovoltaic (PV) panel designed to generate usable electricity from sunlight. The wattage is used to measure ...



Solar Panel Sizes, Dimensions & Weight , Solar Choice

Standard residential solar panels contain 60 solar cells (or 120 half-cut solar cells) and typically generate anywhere from 350W to 500W of electricity. The size of these panels ...

Understanding Photovoltaic Panel Sizes - What You Need to ...

In this detailed guide, we'll explain how solar panel dimensions correlate with wattage, the different size standards, and how to calculate the best fit for your energy goals. ...



What is the length and width of photovoltaic solar panels?

What is the length and width of photovoltaic solar panels? Photovoltaic solar panels generally come in standardized dimensions, with 1.65 meters in length and 1 meter in width ...



Understanding Solar Panel Dimensions In 2025: A Complete Size ...

Explore the most common solar panel dimensions in 2025, including residential and commercial sizes. Learn how solar panel size dimensions affect power, installation, and ...



[Solar Panel Sizes, Dimensions & Wattage for ...](#)

Explore the complete guide to solar panel sizes & wattage for commercial and industrial projects. Learn how to choose the right panel dimension for energy ...

[Standard Solar Panel Sizes And Wattages \(100W ...](#)

Alright, let's have a look at the length and width of typical solar panels, with wattage (very important), and complete with area or square footage (useful ...





[Guide to Solar Panel Sizes & Dimensions in the UK](#)

Do you wonder what solar panel size you need for your home setup? This guide presents different PV panels and their sizes and assists you in calculating solar power.

Contact Us

For catalog requests, pricing, or partnerships, please visit:
<https://talbert.co.za>