

What is the general size of a 830w photovoltaic panel





Overview

How many solar cells does a 300W solar panel have?

A 300W solar panel is the typical size for a residential solar panel, and these solar panels usually have 60 solar cells. Commercial solar panels or other large-scale projects most commonly have 72 or more solar cells. Does the Size of a Solar Panel Matter?

.

How big are solar panels?

This is the typical classification of solar panel sizes (based on the solar cell size). It's a bit theoretical and quite useless for most calculations. The only useful thing that we get from this is depth or height (panel thickness): Most solar panels are about 1.5 inches thick.

How big is a 96 cell solar panel?

96-cell solar panel size. The dimensions of 96-cell solar panels are as follows: 41.5 inches long, and 63 inches wide. That's a 63×41.5 solar panel. This form is a bit shorter but wider. This is the typical classification of solar panel sizes (based on the solar cell size). It's a bit theoretical and quite useless for most calculations.

How many Watts Does a portable solar panel generate?

Portable solar panels are smaller, often half the size of regular solar arrays. Solar panels for homes average 250 to 400 watts. Many portable solar panels for RV are in the 100 to 300 watt range. The physical size of the panels often correlate to the watts, the bigger the panels the more watts it can generate.

What are the dimensions of a 300W solar panel?

In terms of dimensions, a 300w monocrystalline or polycrystalline solar panel typically has a length of around 1.6 meters and a width of 1 meter. However,



these dimensions may vary slightly depending on the manufacturer and the specific design of the panel.

How much does a 60 cell solar panel weigh?

Every brand of solar panels has slight variations in their dimensions and weights, according to manufacturing material. Although the weight of different brands of solar panels varies, an average 60 cell solar panel weighs about 40 pounds. Other important factors are wattage and voltage/current requirements.



What is the general size of a 830w photovoltaic panel

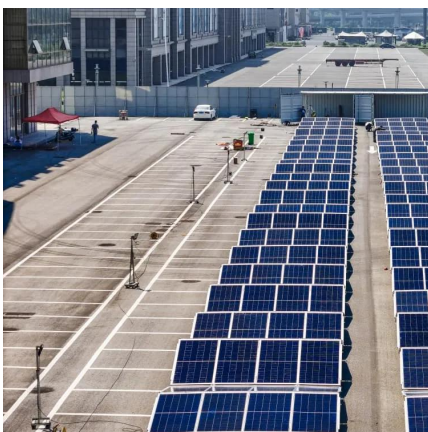


Solar Panel Dimensions Sizes and Wattage

In terms of dimensions, a 300w monocrystalline or polycrystalline solar panel typically has a length of around 1.6 meters and a width of 1 meter. However, these dimensions ...

The best solar panel size guide every homeowner needs

Learn how to choose the ideal solar panel size for your home with charts, standard dimensions, and tips to calculate size per kW in this complete guide.



Size of Solar Panels Explained: Residential and Commercial ...

Introduction The size of solar panels and their dimensions are critical components in designing a solar energy system. It is essential to understand the physical characteristics of ...

Solar Panel Size Guide (with 4 Charts)

What solar panel size do you need for your home or RV? Use this solar panel size chart as your guide to find out.



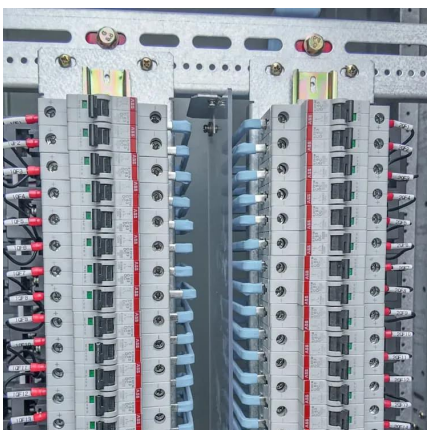
Guidelines for the dimensions of solar panels

The exact size will depend on the wattage of the solar panel and the layout of the array. What is the size of a portable/RV solar panel? If you ...



Understanding Solar Photovoltaic System Performance

This report presents a performance analysis of 75 solar photovoltaic (PV) systems installed at federal sites, conducted by the Federal Energy Management Program (FEMP) with support ...



Highest Watt Solar Panel

Now, 500w solar panels are about as large as residential panels go, and in general, they're about the size of the average residential panel:
...



Solar Panel Sizes and Wattage Explained

Ultimately, for calculating the right solar panel dimension and wattage you must consider the average daily energy consumption and ...

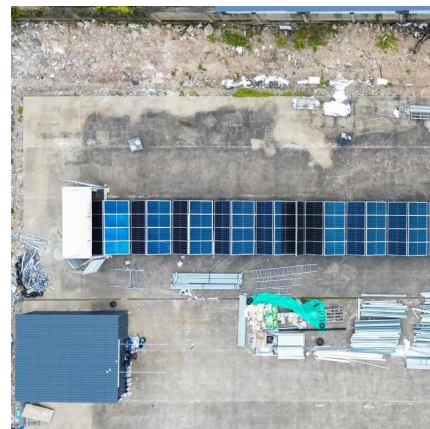


Solar Panels Size & Weight (Including Commercial Dimensions)

Using the average solar panel size of 6 feet by 3.25 feet, and assuming you leave minimal space between the panels, your rooftop solar system would measure roughly 4,875 ...

Understanding Solar Panel Dimensions In 2025: A ...

Explore the most common solar panel dimensions in 2025, including residential and commercial sizes. Learn how solar panel size ...



Standard Solar Panel Sizes And Wattages (100W ...

The goal here is to get to the average solar panel size by wattage. You can find typical dimensions of 100W, 150W, 170W, 200W, 200W, 220W, 300W, 350W, ...



What is Industrial Size Solar Panel? A Comprehensive Guide to

Factors Affecting Panel Size Several factors determine the size of industrial solar panels. The number of cells is a major one--more cells mean a larger panel. The type of solar ...

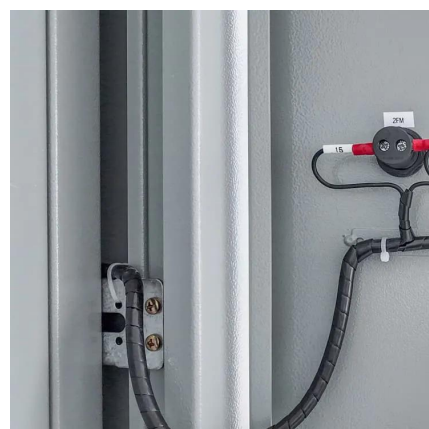


[Solar Panel Size Guide \(with 4 Charts\)](#)

Many portable solar panels for RV are in the 100 to 300 watt range. The physical size of the panels often correlate to the watts, the bigger the panels the more watts it can generate. Here ...

Solar Panels Size & Weight (Including Commercial ...

Check out this full guide on solar panels size, weight, and other characteristics, including a comparison between Residential and Commercial ...





Understanding Solar Panel Dimensions In 2025: A Complete Size ...

Explore the most common solar panel dimensions in 2025, including residential and commercial sizes. Learn how solar panel size dimensions affect power, installation, and ...

[Solar Panel Size And Weight: A Comprehensive Guide](#)

Learn all about solar panel dimensions and weight in this comprehensive guide.



Solar Panel Size Guide: Which Size Of Solar Panel Is ...

Are all solar panels the same size? If solar panels contain different numbers of solar cells, then they aren't all the same size. As a general rule, ...

The best solar panel size guide every homeowner needs

Learn how to choose the ideal solar panel size for your home with charts, standard dimensions, and tips to calculate size per kW in this complete ...



[Solar Panel Datasheet Specifications Explained](#)

The article covers the key specifications of solar panels, including power output, efficiency, voltage, current, and temperature coefficient, as presented in solar ...



[Solar Panel Size And Weight: A Comprehensive Guide](#)

Learn how to choose the ideal solar panel size for your home with charts, standard dimensions, and tips to calculate size per kW in this complete ...



[Solar Panel Size Chart - SizeChartly](#)

Standard Solar Panel Sizes Solar panels come in various standard sizes, typically measured in inches or millimeters. These sizes can significantly influence their compatibility with different ...





[Solar Panel Size And Weight: A Comprehensive Guide](#)

When considering residential solar panels, typical configurations consist of 60 cells measuring approximately 3.25 feet by 5.5 feet. These panels cover an area of 17.62 square ...

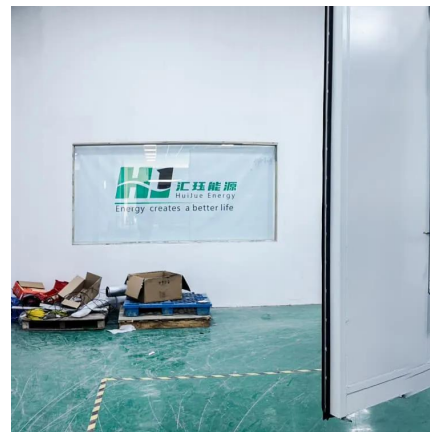


[Solar Panel Sizes and Wattage Explained](#)

Ultimately, for calculating the right solar panel dimension and wattage you must consider the average daily energy consumption and sunlight exposure. Moreover, it's crucial to ...

[Types of photovoltaic solar panels and their ...](#)

Photovoltaic solar panels are devices specifically designed for the generation of clean energy from sunlight. In general, photovoltaic panels are ...



[Solar Panel Dimensions Sizes and Wattage](#)

In terms of dimensions, a 300w monocrystalline or polycrystalline solar panel typically has a length of around 1.6 meters and a width of 1 meter. ...



Solar panel size: choosing the right dimensions

Solar panel size affects energy production and installation space. Explore standard sizes and find the perfect fit for your solar project.



Solar Panels Size & Weight (Including Commercial ...

Using the average solar panel size of 6 feet by 3.25 feet, and assuming you leave minimal space between the panels, your rooftop solar ...

Solar Panel Size Chart - SizeChartly

Answer: For residential use, the best solar panel size generally falls around 65 x 39 inches. These dimensions are designed to fit typical roof spaces while providing a good balance of efficiency ...





How Big is a Solar Panel? The Solar Panel Size Guide

For a residential solar panel, size is fairly consistent across manufacturers: 65 inches (1.65 meters) by 39 inches (1 meter) is the average solar panel size that you find on the roofs of ...

Standard Solar Panel Sizes And Wattages (100W-500W ...

The goal here is to get to the average solar panel size by wattage. You can find typical dimensions of 100W, 150W, 170W, 200W, 200W, 220W, 300W, 350W, 400W, and 500W solar ...



Contact Us

For catalog requests, pricing, or partnerships, please visit:
<https://talbert.co.za>