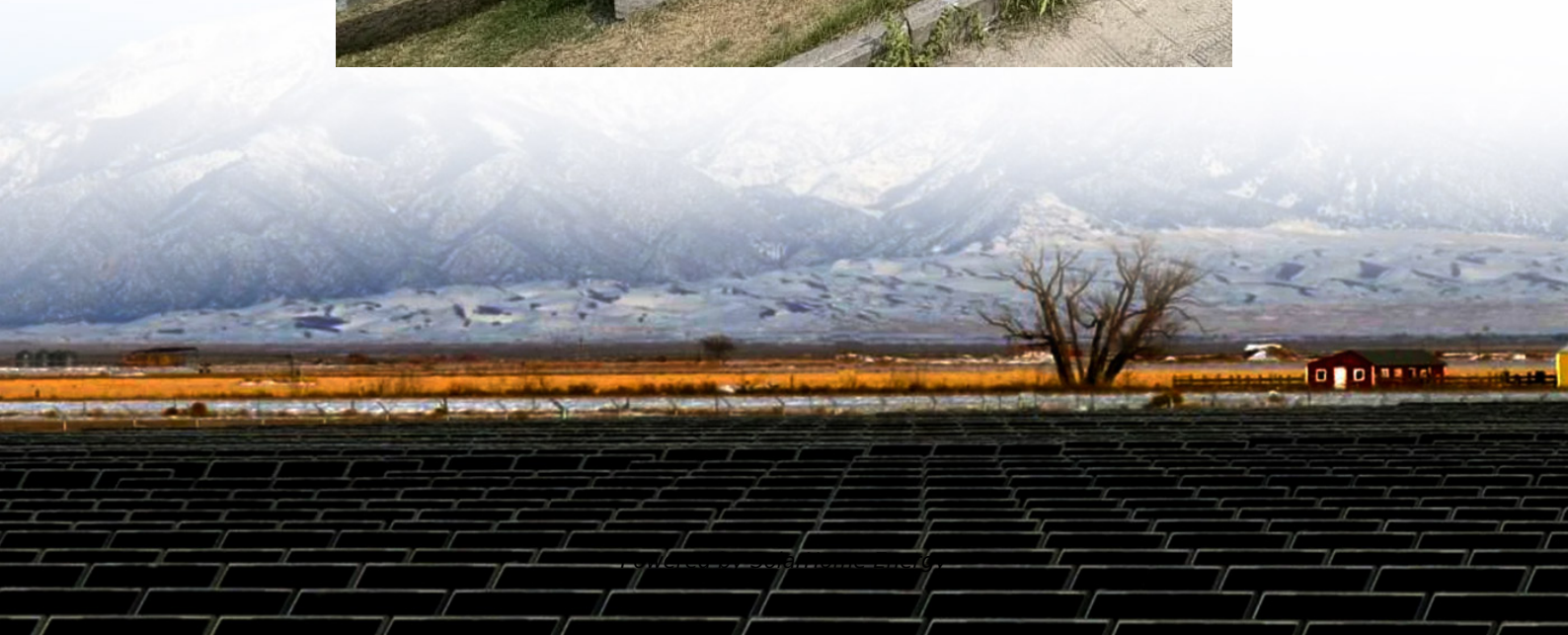


What is the difference between 500w and 220v inverters





Overview

Before we go any further, we highly recommend that you choose a pure sine wave inverter. This type of inverter delivers high-quality electricity, similar to your utility company. This way, none of your appliance.

What is a 500 watt inverter?

500 Watt Inverter: Ideal for sensitive devices and low-mid electrical devices like laptops, small fridges, power tools, cellphones, tablets, TVs, game consoles, and DVD players. It can safely run gadgets with total energy consumption of 400-450 watts.

What are the different solar inverter sizes?

Solar generators range in size from small generators for short camping trips to large off-grid power systems for a boat or house. Consequently, inverter sizes vary greatly. During our research, we discovered that most inverters range in size from 300 watts up to over 3000 watts. In this article, we guide you through the different inverter sizes.

How to choose a power inverter?

Second, select an inverter. For this example, you will need a power inverter capable of handling 4500 watts. The continuous power requirement is actually 2250 but when sizing an inverter, you have to plan for the start up so the inverter can handle it. Third, you need to decide how long you want to run 2250 watts.

What can a 5000 watt inverter run?

5000 Watt Inverter: Has enough power to run several appliances and gadgets. On a 5000 watt inverter, you can run a microwave, a washing machine, water heater, computer, Television, toaster, stereo, and coffee maker. It can power a 1000 watt refrigerator with a 3000 watt surge power. What will a 500 watt Inverter run?

.



Which 1500 watt power inverter should I buy?

If you want to buy a quality and solid build 1500 watt inverter, consider buying the VETOMILE 1500W Power Inverter. The POTEK 1500W Power Inverter is highly efficient and known for a noiseless operation. On the other hand, the Energizer 1500 Watt Power Inverter is a well-known brand and has in-built protection.

How much power does an inverter use?

When you include the idle power consumption of the inverter with its conversion inefficiency while powering small loads, 50-150W, 55-70% efficient is a good number. Many units have a "low power" option where idle power consumption is decreased; however, those are only useful if you have NO loads whatsoever on the unit.



What is the difference between 500w and 220v inverters

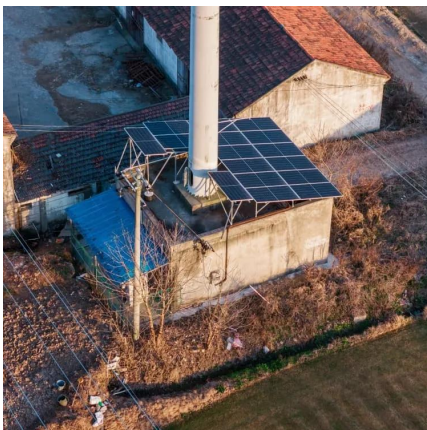


Big inverters vs smaller inverters

No inverter is more efficient than the most efficient inverter, so the more you can run directly from DC the less efficiency penalty you get hit with. ...

What Size Inverter Do I Need?

Whether you're looking for what size inverter is best for your house or something as simple as an inverter for power your TV, the proper size will be a ...



Find the Right Inverter Size: How Big An Inverter Do ...

The right size inverter for your specific application depends on how much wattage your devices require. This information is usually printed ...

12v Inverter, 12v DC to 110v/220v AC Power Inverter , inverter

12V 300-watt power inverter for sale. The modified sine wave inverter delivers 600-watt



peak power and converts 12V DC from battery or car lighter to AC 110V or 220V household power.

...



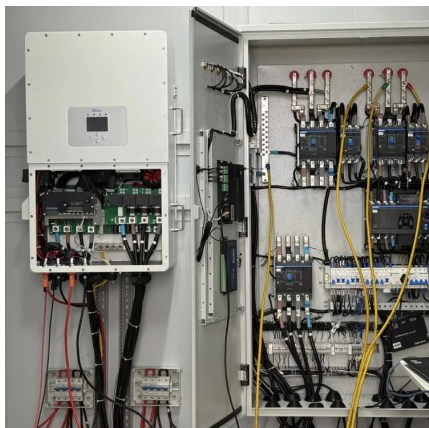
What will a 500, 750, 1000, 1500, 2000, 3000, 4000 ...

From a microwave to a freezer and all, electrical home appliances have become a must-have in the home. Fair enough, Inverters are used as an

...

Understanding Inverters and How-to Select one that is right for you

Inverter over-loading occurs when a device or a set of devices surpasses the available wattage from the inverter. Example: If your inverter is rated at 1,000 continuous watts and you plug in a ...



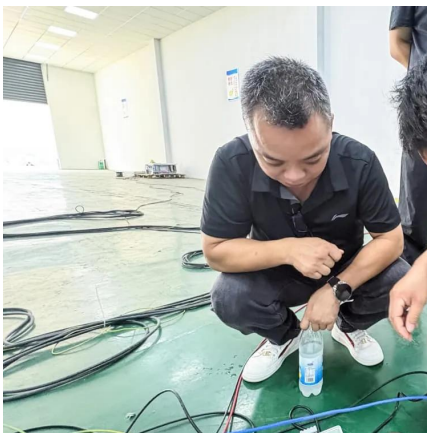
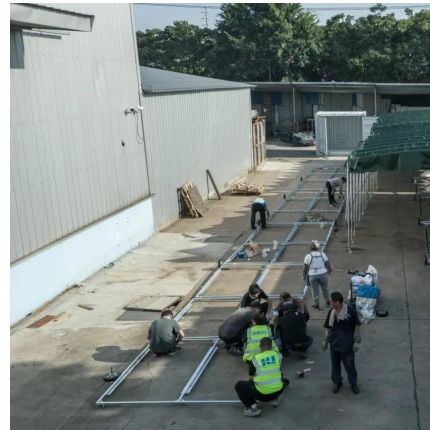
[Power Inverters Guide :: CompactAppliance](#)

Learn everything you could want to know about Power Inverters. Your guide to safety tips, common uses, battery basics, and how to choose ...



Pros and Cons of Inverter Generators

Consumer Reports' expert, independent tests find that inverter generators run longer, quieter, and more efficiently than other generators. But they cost more.



difference between cheap and expensive pure sine wave inverters?

I highly doubt you can get a 4kW inverter for 40\$, let alone that being pure sine wave. That'd like be a unit capable of maybe 200-400W at best square wave.

What can I run on a 500 watt inverter?

A 500 watt inverter is a popular choice for powering electronic devices and appliances in areas without access to a traditional power grid. But ...



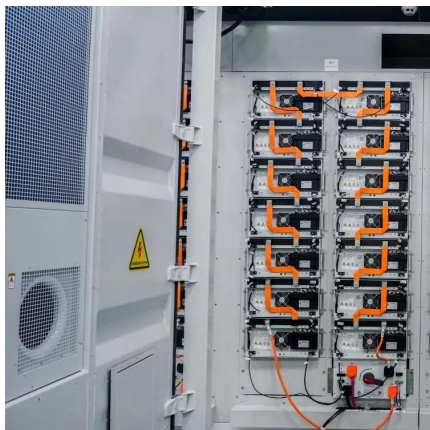
12V 500 Watt Pure Sine Wave Inverter

500W pure sine wave inverter DC 12V to AC 240V/220V/110V/230V, 50/60Hz output frequency, 12 volt 500 watt pure sine inverter provides the safest option ...



12V 220V 500W Pure Sine Wave Portable Power Inverter

Products > Power Inverter > Pure Sine Wave Power Inverter > 12V 220V 500W Pure Sine Wave Portable Power Inverter



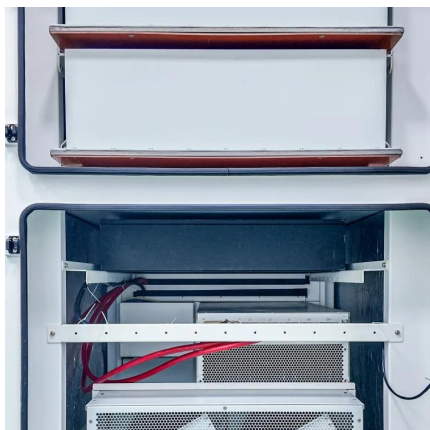
Everything You Need to Know About Inverters: Types, ...

Inverters range greatly in size and power. They can be as small as 50 watts or as large as 50,000 watts. Yet, it's uncommon to find an inverter ...

What Size Inverter Do I Need?

Whether you're looking for what size inverter is best for your house or something as simple as an inverter for power your TV, the proper size will be a measurement based on the typical power ...





Big inverters vs smaller inverters

The difference between brands is larger than difference between various wattage models from a given brand. A standby mode which wakes up ...

Understanding Inverters and How-to Select one that is ...

Inverter over-loading occurs when a device or a set of devices surpasses the available wattage from the inverter. Example: If your inverter is rated at 1,000 ...



Big inverters vs smaller inverters

No inverter is more efficient than the most efficient inverter, so the more you can run directly from DC the less efficiency penalty you get hit with. There are exceptions and ...

What will a 500, 750, 1000, 1500, 2000, 3000, 4000 watt Inverter ...

From a microwave to a freezer and all, electrical home appliances have become a must-have in the home. Fair enough, Inverters are used as an alternative to running ...



converter or inverter mein antar , what is the difference between

200 watt Converter se Fan kaise Chalaye ,
Inverter kaise banaye , ups transformer inverter ,
500w



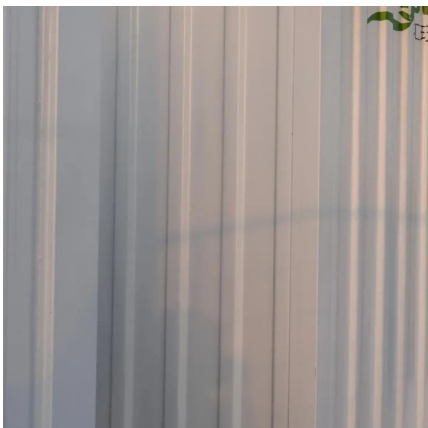
Frequently Asked Questions About Power Inverters , DonRowe

Short Answer: The size you choose depends on the watts (or amps) of what you want to run (find the power consumption by referring to the specification plate on the appliance or tool). We ...



Everything You Need to Know About Inverters: Types, Uses, and ...

Inverters range greatly in size and power. They can be as small as 50 watts or as large as 50,000 watts. Yet, it's uncommon to find an inverter over 11,000 watts in a usual ...





Pros and Cons of Inverter Generators

Consumer Reports' expert, independent tests find that inverter generators run longer, quieter, and more efficiently than other generators. But ...



voltage

$I^2 \cdot R$ losses in your case is negligible. Converting DC to AC is expensive both in terms of efficiency and cost. The best inverters which are ...

What Can a 4000 Watt Inverter Run - Complete Guide

Discover what a 4000 watt pure sine wave inverter can run, including definitions, applicable equipment, appliance operating hours, ...



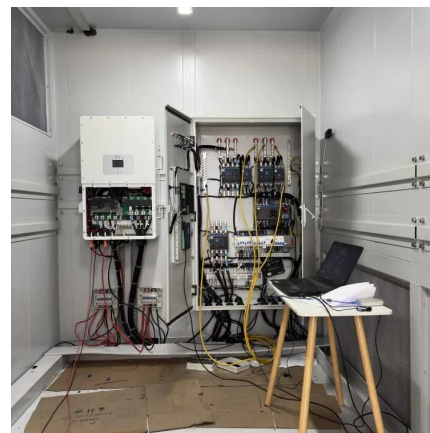
Inverter Wire Size Calculator Online

An Inverter Wire Size Calculator is a specialized tool designed to help you determine the optimal wire size needed for your inverter setup. This ...



What is the Difference Between a 1kW, 3kW, and 5kW Inverter?

In general, the main difference between 1kW, 3kW, and 5kW inverters lies in their power output, the size of the systems they support, and the number of devices they can power at once.

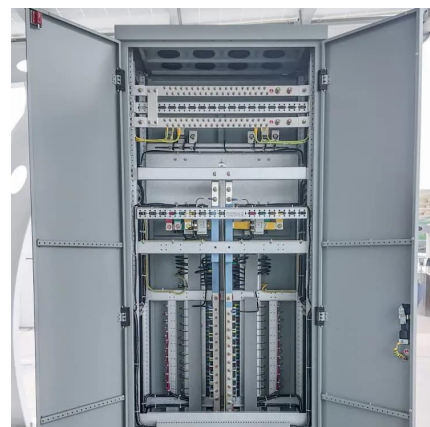


Differences UPS or Inverter , Access Inc.

Comparing the Differences between an Inverter and a UPS Both a UPS or Inverter can be used to provide backup power. The UPS is more expensive and designed for critical equipment. ...

Using standalone inverters to create off-grid power ...

The difference between standalone inverters and on-grid inverters Standalone inverters (off-grid inverters) and grid-connected inverters are the ...



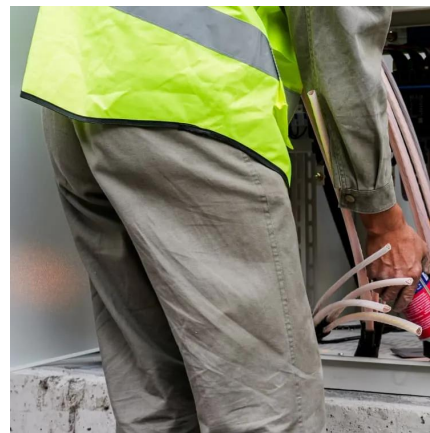


[The Only Inverter Size Chart You'll Ever Need](#)

We have created a comprehensive inverter size chart to help you select the correct inverter to power your appliances.

Solar Inverters

Solar Inverters What is a Solar Inverter and How Does It Work? A hybrid inverter is a type of solar inverter that combines the functionalities of both grid-tied and ...



Find the Right Inverter Size: How Big An Inverter Do You need?

The right size inverter for your specific application depends on how much wattage your devices require. This information is usually printed somewhere on electronic devices, ...

Contact Us

For catalog requests, pricing, or partnerships, please visit:
<https://talbert.co.za>