

# **What is the best slope for photovoltaic panels to generate electricity**





## Overview

---

The ideal slope typically ranges between 30 to 45 degrees for solar panel installations. Factors such as geographic location, seasonal sunlight variations, and local climate conditions ultimately dictate the most effective angle. What is the optimal tilt angle of photovoltaic solar panels?

The optimal tilt angle of photovoltaic solar panels is that the surface of the solar panel faces the Sun perpendicularly. However, the angle of incidence of solar radiation varies during the day and during different times of the year.

Can you change the slope of solar panels?

You can change the slope of solar panels using tilt mounts despite imperfect roofs. The adjustable system configuration on these mounts allows you to select the best possible angle for your location to give you maximum energy generation. Ground-mounted solar systems should be your consideration when your roof does not meet the requirements.

What is the best solar panel angle?

As we've mentioned earlier, your location's latitude plays a major part in determining the best solar panel angle. Across the continental U.S., the optimal tilt can range from 30-45 degrees. However, the further north you live, the more orientation can affect solar panel efficiency.

What angle should solar panels be installed?

Make sure location services are enabled in your browser or in your phone's browser app. Note: To allow for rain to naturally clean solar panels, installers usually limit tilt angles to 10°. What's the Best Angle for Solar Panels?

The most common answer to this question is to set the angle of your solar panels equal to your latitude.

What is the ideal inclination of photovoltaic panels?



The ideal inclination of the photovoltaic panels depends on the latitude in which we are, the time of year in which you want to use it, and whether or not you have your own generator set. In winter, the optimum angle is close to 50°, and in summer, the ideal angle is around 15 degrees. However, some conditions can alter this premise.

What is a good roof tilt for solar panels?

The U.S. Department of Energy says the sweet spot for south-facing solar panels is between 15 and 40 degrees. Lucky for us, most U.S. homes have roofs tilted between 18 and 34 degrees – right in the zone. Even if your roof's tilt isn't perfect, solar panels can still produce plenty of electricity to make it worth your while.



## What is the best slope for photovoltaic panels to generate electricity

---

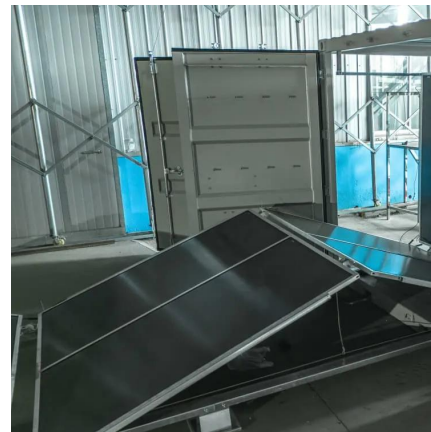


### What Is The Best Angle For Solar Panels In The UK?

Most solar panel systems are installed on the roof so they get maximum sunlight. The angle of installation is an important consideration, and installers need to work with the ...

### Point Your Solar Panels in the Right Direction for the Most Power

You may want to adjust the angle of your panels, if possible, to lie flatter in the summer and closer to vertical in the summer to generate the maximum amount of electrons.



### What Is the Best Roof Pitch for Solar Panels? Understanding the ...

By determining the optimal roof pitch, typically between 30 to 45 degrees, homeowners can significantly enhance their solar panel efficiency, leading to greater energy ...

### Best Angle for Solar Panels: It's Not Your Latitude

What's the Best Angle for Solar Panels? The most common answer to this question is to set the





angle of your solar panels equal to your latitude.  
So, if your latitude is ...



## Roof Pitch for Solar Panels: Best Angles for Maximum ...

Discover the best roof pitch for solar panels to maximize efficiency. Learn how angles impact energy production and optimize your solar setup.

## Best Angle for Solar Panels: It's Not Your Latitude

The optimal tilt angle of photovoltaic solar panels is that the surface of the solar panel faces the Sun perpendicularly. However, the angle ...



## Solar panel efficiency: how much does the orientation ...

The direction your roof faces, also called its azimuth, is one of the main factors that determines how much sunlight your solar panels will receive ...



## What Is the Best Roof Pitch for Solar Panels?

By determining the optimal roof pitch, typically between 30 to 45 degrees, homeowners can significantly enhance their solar panel efficiency, ...



## **What's the Best Angle for Solar Panels? , EnergySage**

For maximum output, the sweet spot for solar panels in the continental U.S. is facing roughly south and tilted between 15 and 40 degrees, ...

## **What is the best angle and orientation for solar panels?**

South-facing solar panels typically yield the highest energy production, while east-west facing roofs can still be effective. The direction of your solar panels is generally more ...



## **What Is the Best Roof Design for Solar Panels and What If Mine's ...**

This article explores how your roof can effect solar production and what to do if you don't have the best roof design for solar panels.



## What is the appropriate slope for solar panels? , NenPower

The appropriate slope for solar panels is typically between 30 to 45 degrees, but it can vary depending on latitude, desired energy efficiency, and local climate conditions. The ...



## Point Your Solar Panels in the Right Direction for the ...

You may want to adjust the angle of your panels, if possible, to lie flatter in the summer and closer to vertical in the summer to generate the maximum ...

## Solar Panel Direction: What is the Best Angle?

According to the Department of Energy, solar panels perform best in the U.S. when oriented facing south and tilted between 15 and 40 degrees. This position allows them to ...





## **Solar panel inclination angle, location and orientation**

The optimal tilt angle of photovoltaic solar panels is that the surface of the solar panel faces the Sun perpendicularly. However, the angle of incidence of solar radiation varies ...

### Solar Panel Direction: What is the Best Angle?

According to the Department of Energy, solar panels perform best in the U.S. when oriented facing south and tilted between 15 and 40 degrees. ...



### How Does Solar Energy Create Electricity?

Solar power generates electricity by using either solar thermal systems that convert sunlight into heat to produce steam that drives a ...

## **Roof Pitch for Solar Panels: Best Angles for Maximum Efficiency**

Discover the best roof pitch for solar panels to maximize efficiency. Learn how angles impact energy production and optimize your solar setup.





## What is the best angle and orientation for solar panels?

South-facing solar panels typically yield the highest energy production, while east-west facing roofs can still be effective. The direction of ...



## Best Orientation for Solar Panels: Maximize Energy ...

West-facing panels can be beneficial for homeowners using Time-of-Use (TOU) pricing, as they generate more electricity during the late ...



## [How to Determine the Best Angle for Solar Panels](#)

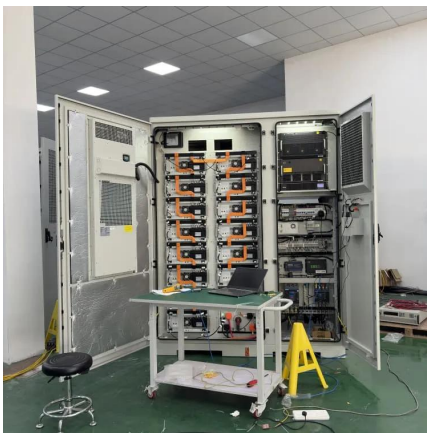
Most of the time, solar panels will still produce enough electricity to make the purchase worthwhile, even if your roof is not between 15 and 40 ...





## Solar Panel kWh Calculator: kWh Production Per Day, Month, Year

Based on this solar panel output equation, we will explain how you can calculate how many kWh per day your solar panel will generate. We will also calculate how many kWh per year do solar ...



## Maximize Efficiency: Best Direction for Solar Panels

Learn the best direction for solar panels to optimize energy efficiency and savings. Find expert advice on positioning your panels for ...

## What's the Best Angle for Solar Panels? , EnergySage

For maximum output, the sweet spot for solar panels in the continental U.S. is facing roughly south and tilted between 15 and 40 degrees, according to the Department of ...



## The best angle and direction for solar panels [UK, 2025]

And the more electricity your panels generate, the lower your bills - so it's crucial that your installer positions them properly. The sun follows ...



### What is the best angle for solar panels?

In such cases, the panels are generally set at an angle that maximizes energy production throughout the year. » LEARN: How many kWh ...

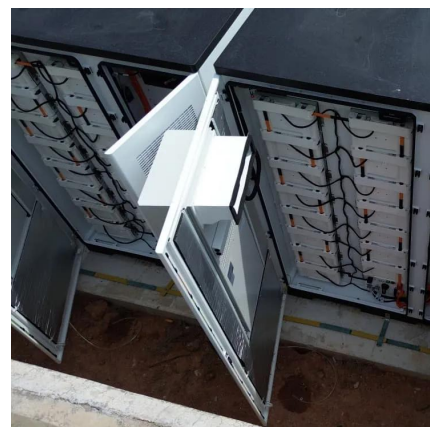


### **What's the Best Angle for Solar Panels to Get Maximum Output?**

Learn what goes into determining the best angle for solar panels to optimize energy output and how you can ensure your solar system is designed to maximize efficiency of ...

### What Solar Panel Orientation is best in the UK?

Solar Panel Orientation in the UK Your solar panel orientation is very important when it comes to maximising the amount of electricity that your solar panels ...





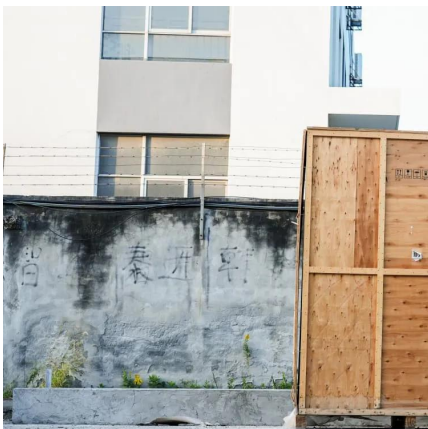


## Installing Solar Panels on a Flat Roof (3 Tips to ...

A high-efficiency panel brand will produce more electricity in all conditions than a panel with a lower efficiency rating. This is the case for ...

## What's the Best Angle for Solar Panels to Get ...

Learn what goes into determining the best angle for solar panels to optimize energy output and how you can ensure your solar system is ...



## Best Roof Angle for Solar Panels: Stay Powered All ...

So, choosing the best roof angle for your solar panels is crucial for their extended lifespan and overall performance. The Best Roof Angle for ...

## Contact Us

---

For catalog requests, pricing, or partnerships, please visit:  
<https://talbert.co.za>