

What is the battery connected to the base station





Overview

What is a base battery system?

The Base battery system is built for performance and reliability. It combines a high-capacity lithium iron battery with intelligent software to optimize energy use. The Base battery system has three main components: the battery pack, inverter, and hub. The long white unit is the battery pack. We mount the battery pack on the ground.

How does a base battery work?

This process is called grid-balancing. Base batteries deploy energy to the grid faster than any other service, which is how Base is able to recoup the cost of the battery equipment and keep prices low for homeowners. The charge level of your Base battery will naturally fluctuate over time, rising and falling throughout a multi-day cycle.

Which battery is best for telecom base station backup power?

Among various battery technologies, Lithium Iron Phosphate (LiFePO₄) batteries stand out as the ideal choice for telecom base station backup power due to their high safety, long lifespan, and excellent thermal stability.

How does a base station function?

A base station functions by requiring a powerful transmitting amplifier to generate strong signals. This "power amplifier" is linked to the transmitting antenna by a length of coaxial cable, and is usually housed in a small building beneath the tower. (Under the tower).

Do base batteries run in two directions?

Base batteries run in two directions, which is how Base is able to keep costs low for homeowners. The batteries charge during off-peak hours, like midday and late at night, when energy is more available and demand is low.



What makes a telecom battery pack compatible with a base station?

Compatibility and Installation Voltage Compatibility: 48V is the standard voltage for telecom base stations, so the battery pack's output voltage must align with base station equipment requirements. Modular Design: A modular structure simplifies installation, maintenance, and scalability.



What is the battery connected to the base station

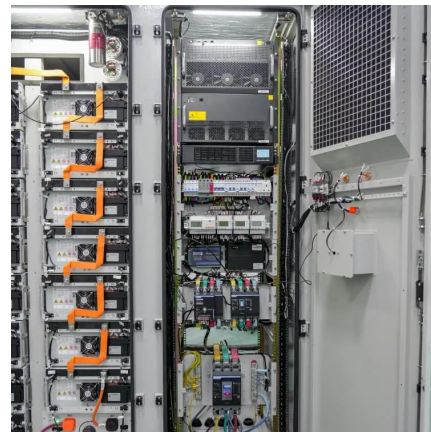


What is one advantage of using a base station radio Question

They are also typically connected to larger, more efficient antennas, which can further improve performance. Reliable Power Source: Unlike portable radios, which rely on batteries, base ...

How the Base battery works: A complete guide to grid ...

How does your Base battery work? How does it connect to the grid? What happens during an outage? This guide covers everything you need to know about how your Base battery ...



How to Charge Your Astro A50s? A Quick and Easy ...

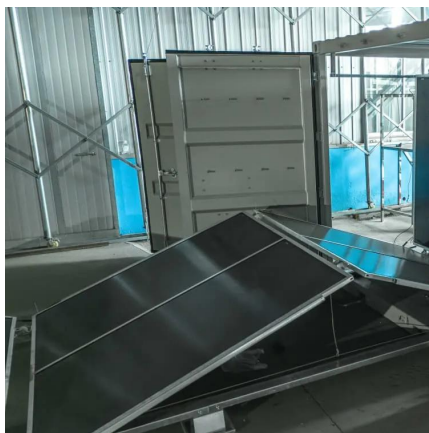
The first thing you need to know is that the Astro A50 headset comes with a base station that is used for charging. To charge your headset, ...

Solar Powered Cellular Base Stations: Current ...

Cellular base stations powered by renewable energy sources such as solar power have



emerged as one of the promising solutions to these issues.

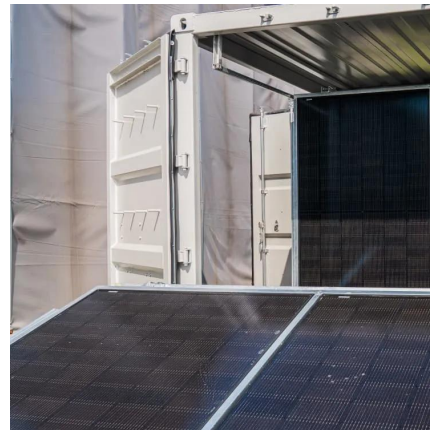


[4100000864_02_Aspen_Outdoor-Camera](#)

Outdoor Camera SE Quick Start Guide For the best experience Charge your camera before setup To charge camera: First, plug your base station into power. Using the base station's USB port, ...

[Installation and hardware , Base Help Center](#)

What does a typical Base system installation look like? How does the Base system interact with the generator interlock on the main panel? How do I connect my battery to my home WiFi ...



Lithium battery is the magic weapon for communication base station

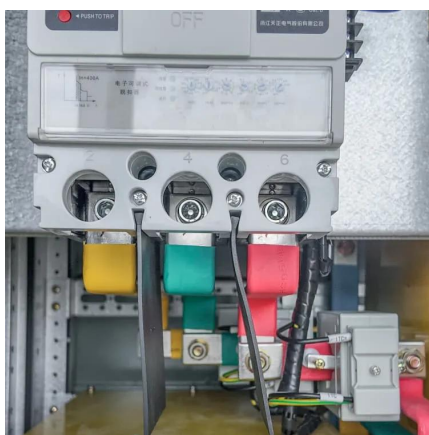
Intelligent energy storage lithium battery can effectively protect the base station battery in the event of the accidental short circuit, lightning shock, and other conditions, timely ...





Setting Up and Using Your Ring Alarm Pro Base Station

Setting Up and Using Your Ring Alarm Pro Base Station The Ring Alarm Pro Base Station is designed to be the hub of your home, with a Ring Alarm security system, an eero Wi-Fi 6 ...



What Is Base Station Energy Storage?

In the event of a main power failure, the system automatically switches on to keep the base station operational. These systems have a lithium battery, as it charges fast, holds a ...

Grid-Scale Battery Storage: Frequently Asked Questions

What is grid-scale battery storage? Battery storage is a technology that enables power system operators and utilities to store energy for later use. A battery energy storage system (BESS) is ...



Telecommunication base station system working principle and ...

Operational principle The ESB-series outdoor base station system utilizes solar energy and diesel engines to achieve uninterrupted off grid power supply. Solar power ...



Lithium battery is the magic weapon for

...

Intelligent energy storage lithium battery can effectively protect the base station battery in the event of the accidental short circuit, lightning shock, ...



Cellular Base Stations

Most base stations also have a backup DC power system comprising lead/acid or Gel batteries connected together to provide 24/48volts. If the AC power fails due to a blackout, ...

How the Base battery works: A complete guide to grid ...

How does your Base battery work? How does it connect to the grid? What happens during an outage? This guide covers everything you need to know ...



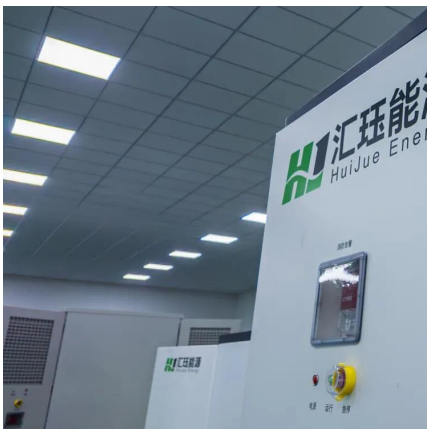


What are base station energy storage batteries used for?

Innovations in battery technologies, such as lithium-sulfur or solid-state batteries, promise higher energy densities and improved lifespan, ...

Connect camera to base station

Take the batteries out of all the cameras, Place the battery back in one camera so that you can sync them one at a time. Press the sync button on the top of the base station. ...

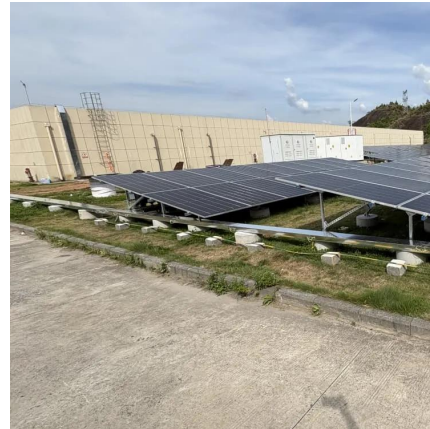


[Installation and hardware , Base Help Center](#)

How do I connect my battery to my home WiFi network? This article will help you connect your battery to your WiFi. It will also help you troubleshoot internet connectivity issues.

Telecommunication base station system working principle and ...

The system can effectively store the direct current generated by solar panels in the battery, which can effectively solve the problem of living and industrial electricity in remote ...



Top Echo Dot Battery Base Options for Every Generation

Here are the top two battery base options to make this little device even more versatile. Blanou Echo Dot 3 Battery Base Features: Sleek design, easy to ...



Base Stations

What is Base Station? A base station represents an access point for a wireless device to communicate within its coverage area. It usually ...



Telecom Base Station Backup Power Solution: Design ...

Among various battery technologies, Lithium Iron Phosphate (LiFePO4) batteries stand out as the ideal choice for telecom base station ...





What is a base station energy storage battery? , NenPower

A base station energy storage battery is a crucial component of telecommunication infrastructure, designed to improve the efficiency and reliability of network operations.



Do all Wyze cameras need a base station? I'm getting a lot of

You only need a base station for the Outdoor Cameras that are battery powered. V3 Cameras connect directly to WiFi and you can have as many as you want, they don't use base stations.

What are base station energy storage batteries used for?

Innovations in battery technologies, such as lithium-sulfur or solid-state batteries, promise higher energy densities and improved lifespan, thereby enhancing the operational ...



Cellular Base Stations

Most base stations also have a backup DC power system comprising lead/acid or Gel batteries connected together to provide ...



What is a base station energy storage battery?

A base station energy storage battery is a crucial component of telecommunication infrastructure, designed to improve the efficiency and ...



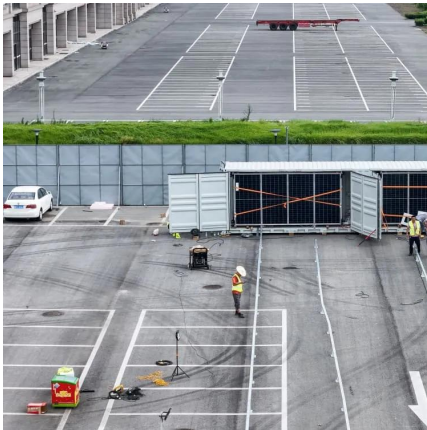
Base station operation guidelines

Base station operation guidelines This topic introduces the concept of base station operation, provides information to help you identify good setup locations, describes best practices for ...

Revolutionising Connectivity with Reliable Base Station Energy ...

Base station energy storage refers to batteries and supporting hardware that power the BTS when grid power is unavailable or to smooth out intermittent renewable sources like ...



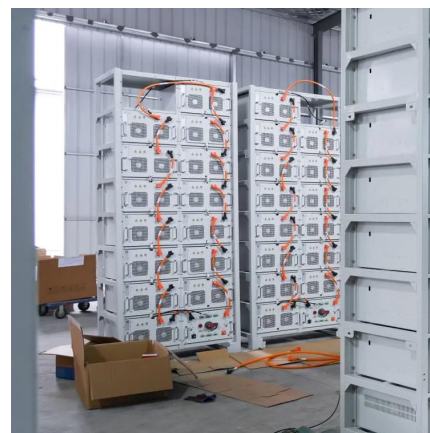


Telecom Base Station Backup Power Solution: Design Guide for ...

Among various battery technologies, Lithium Iron Phosphate (LiFePO₄) batteries stand out as the ideal choice for telecom base station backup power due to their high safety, ...

What is Base Station?

Generally, a base station contains several antennas mounted on its top, mainly responsible for the transmission and reception of signals, connected to the ...



Contact Us

For catalog requests, pricing, or partnerships, please visit:
<https://talbert.co.za>