

# **What are the current measurements for communication base stations**





## Overview

---

What is a base station transmitter?

The goal of Base Station Transmits is to discuss challenges faced by engineers and technicians who must optimize today's wireless networks. Topics include antenna systems, backhaul testing, interference, and meeting key performance indicators (KPIs).

What does a live base station measurement entail?

If measurements on a live base station are required, the field engineer or technician needs to extract the "beamed" transmission in the direction to be evaluated, as well as know the intended EIRP. This means the test instrument must be able to track the on/off periods of the signal and use that information to control the measurement timing.

Why are base stations important in cellular communication?

Base stations are important in the cellular communication as it facilitate seamless communication between mobile devices and the network communication. The demand for efficient data transmission are increased as we are advancing towards new technologies such as 5G and other data intensive applications.

How do you test a base station transmitter?

Some key tests include output power, output power dynamics, transmit ON / OFF power, transmit signal quality, unwanted emissions, and transmitter intermodulation. Therefore, it is essential to select testing devices that can provide robust performance, and ensure that the base station transmitters in the network perform to standards.

What is a base station?

What is Base Station?



A base station represents an access point for a wireless device to communicate within its coverage area. It usually connects the device to other networks or devices through a dedicated high bandwidth wire or fiber optic connection. Base stations typically have a transceiver, capable of sending and receiving wireless signals;.

What are the components of a base station?

**Power Supply:** The power source provides the electrical energy to base station elements. It often features auxiliary power supply mechanisms that guarantee operation in case of lost or interrupted electricity, during blackouts. **Baseband Processor:** The baseband processor is responsible for the processing of the digital signals.



## What are the current measurements for communication base station

---



### Test and Measurement

The goal of Base Station Transmits is to discuss challenges faced by engineers and technicians who must optimize today's wireless networks. Topics include antenna systems, ...

### Reliability prediction and evaluation of communication base stations ...

The above studies mainly analyzed the causes of failures based on the working conditions of post-earthquake communication base stations or propose a new emergency ...



### Base Station Antenna Height Recommendations Explained

Per ITU-R P.1410 recommendations, base station antenna heights typically range between 15-60 meters. Urban deployments favor 25-35m, rural coverage requires 40-55m, ...

### Base station testing

With 5G, we enter a new and exciting era for base station design. Base stations and Remote Radio Units (RRU) are moving towards more



integrated antenna/radio solutions, as ...

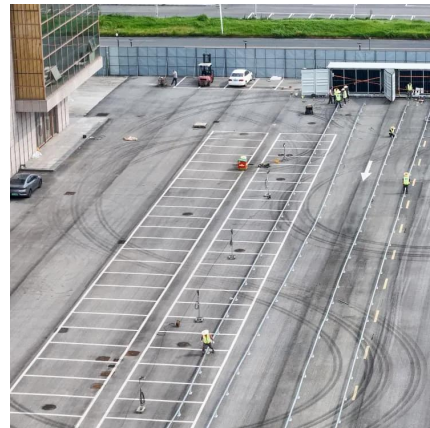


## What Is Base Station in Mobile Communication? - The Heart of ...

At the heart of this system lies the base station, a crucial component that enables seamless communication between mobile devices and the network. In this blog post, we will ...

## Base Station

Definition A base station refers to a fixed communication device that serves as a hub for connections in a specific area, such as a wireless telephone system in a cellular ...



## Measurement and analysis of RF EMF exposure to 5G ...

SUMMARY This paper reports key findings from a large-scale research study of radio frequency electromagnetic fields (RF EMF) exposure to 5G mobile communication base stations with ...

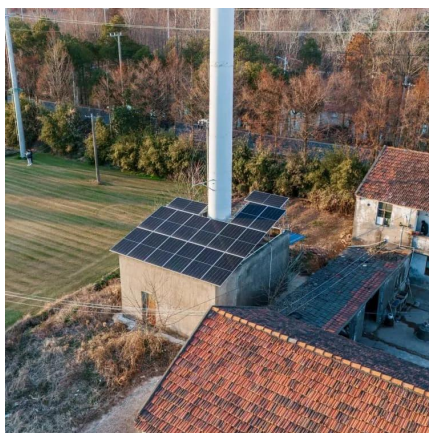






## Base Station Testing: A Comprehensive Guide

In wireless communication networks, base stations or cell towers are evaluated and assessed for their functionality, performance, and ...

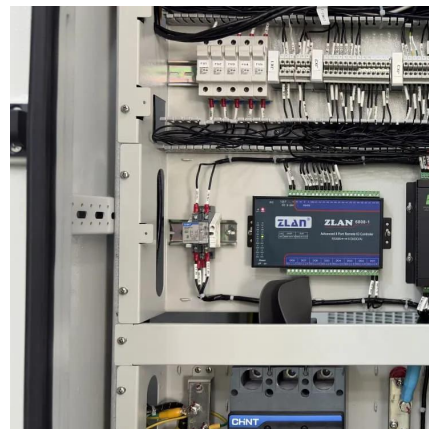


### **Spatial variability of outdoor exposure to radiofrequency radiation**

The wide-spread exposure to constantly evolving wireless technologies believed to pose a serious health threat. Human beings are persistently exposed to RF radiation from ...

### **What Is a Base Station and Its Role in Enhancing ...**

When we talk about a base station, we're diving into the heart of communication technology. It's essentially a fixed point of communication within a network ...



### **Human exposure to EMF from 5G base stations: analysis, ...**

Performance of three different methodologies and equipment (broadband probes, spectrum analyzers, and drive test scanners), in the context of human exposure to ...



## Base Station Testing: A Comprehensive Guide

In wireless communication networks, base stations or cell towers are evaluated and assessed for their functionality, performance, and dependability through a procedure ...



## Cellular Networks, Base Stations, and 5G RAN

A user's mobile telephone communicates through the air with an base station antenna, which in turn links to the central exchange of the ...

## **Base Stations**

The present-day tele-space is incomplete without the base stations as these constitute an important part of the modern-day scheme of wireless ...





## 5G Measurements: UE and Base Station Testing Overview

Explore 5G measurements for User Equipment (UE) and Base Stations (BS), covering transmitter and receiver test scenarios, conformance, and network stability.

### Base stations

Over large distances, the signals must be relayed by a communication network comprising base stations and often supported by a wired network. The power of a base station varies (typically ...



### Base Station Antenna Height Recommendations ...

Per ITU-R P.1410 recommendations, base station antenna heights typically range between 15-60 meters. Urban deployments favor 25-35m, rural ...

### What Is A Base Station?

A base station is an integral component of wireless communication networks, serving as a central point that manages the transmission and ...





## Electromagnetic radiation estimation at the ground plane near fifth

A novel method based on machine learning is proposed to estimate the electromagnetic radiation level at the ground plane near fifth-generation (5G) base stations. ...



## The First Experimental Validation of a Communication ...

Integrated Sensing and Communication (ISAC) is an important trend for future commutation networks. The Communication Base Station ...



## Base station testing

With 5G, we enter a new and exciting era for base station design. Base stations and Remote Radio Units (RRU) are moving towards more ...





## Base Stations

The present-day tele-space is incomplete without the base stations as these constitute an important part of the modern-day scheme of wireless communications. They are ...



## Mobile Communication Base Station Antenna Measurement ...

I. INTRODUCTION Mobile communication base station serves to transmit radio transmission and reception stations between mobile communication switching center and mobile terminal within ...

## Conformance Testing is the Key to Base Station Performance

Base Station Transmitter Conformance Test Requirements To have full coverage on transmitter tests, the 5G NR measurement application running on a signal analyzer should ...



## A Theoretical and Experimental Investigation on the ...

Measurement site; the measurement positions are labeled A and B; the 5G base station antenna is visible on the left.



## Optimize Signal Quality In 5G Private Network Base Stations

Error vector magnitude (EVM) measurement offers powerful insight into the performance of a digital communication base station transmitter and is one of the primary metrics to assess the ...

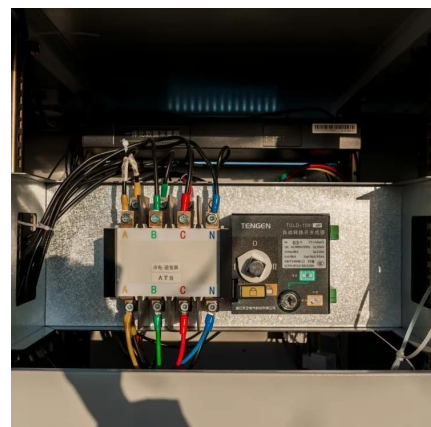


## 5G Technology Metrics Explained: Base Station, Uplink, and User

Get a detailed breakdown of 5G hardware specs, including antenna sizes, power, gain, and SNR for base stations, uplink CPEs, and user equipment.

## Base station testing

Types of base stations The 5G base stations are divided into four categories depending on architecture and frequency range. The 4G base ...





## Contact Us

---

For catalog requests, pricing, or partnerships, please visit:  
<https://talbert.co.za>