

Two 12v lithium iron phosphate battery packs connected in series





Two 12v lithium iron phosphate battery packs connected in series

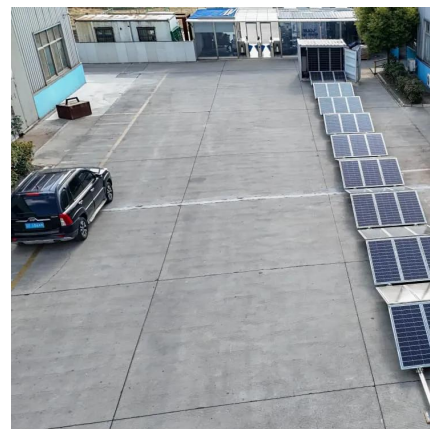


Your Complete Guide to 12V LiFePO4 Battery Technology

The 12V LiFePO4 battery is a top choice for energy storage due to its safety, longevity, and efficiency. This guide covers its features, benefits, and uses.

LiFePO4 Lithium Batteries in Series VS Parallel ...

Series connection of LiFePO4 batteries involves linking multiple cells in a sequence to boost the total voltage output. In this setup, the positive ...



[Lithium Series, Parallel and Series and Parallel](#)

In conclusion, you can connect multiple LiFePO4 batteries in series to achieve higher voltage outputs necessary for various applications. ...

How many LiFePO4 batteries can be connected in series?

In conclusion, you can connect multiple LiFePO4 batteries in series to achieve higher voltage



outputs necessary for various applications.
Typically, up to four 12V batteries ...



Lithium Series, Parallel and Series and Parallel

Connecting multiple lithium batteries into a string of batteries allows us to build a battery bank with the potential to operate at an increased voltage, or with increased capacity and runtime, or both.

Why cant I run more than 4 lifepo4 batteries in parallel?

Our Lifepo4 batteries can be connected in parallels and in series for larger capacity and voltage. Allow to be extended up to 4 in series and 4 in parallel (Max 4S4P) to ...



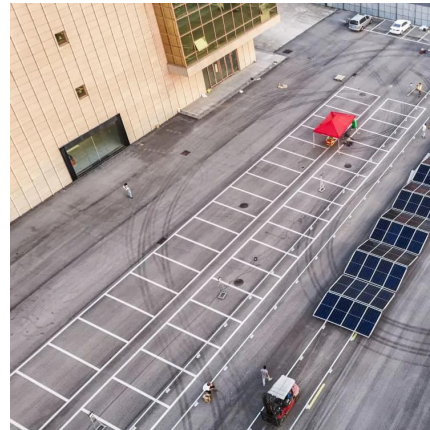
DIY LiFePO4 Battery Pack: Step-by-Step Guide (2025 Update)

How to Build a LiFePO4 Battery Pack: DIY Guide with Expert Tips (2025) Why Build a LiFePO4 Battery Pack? LiFePO4 (Lithium Iron Phosphate) batteries dominate renewable energy ...



[Connecting batteries in series - BatteryGuy ...](#)

There are two ways to wire batteries together, parallel and series. The illustrations below show how these set wiring variations can produce ...



Cells

A 12V LiFePO4 battery typically consists of four cells connected in series, each contributing to the total voltage and performance of the battery.

LiFePO4 Lithium Batteries in Series VS Parallel Connection

Series connection of LiFePO4 batteries involves linking multiple cells in a sequence to boost the total voltage output. In this setup, the positive terminal of one cell ...



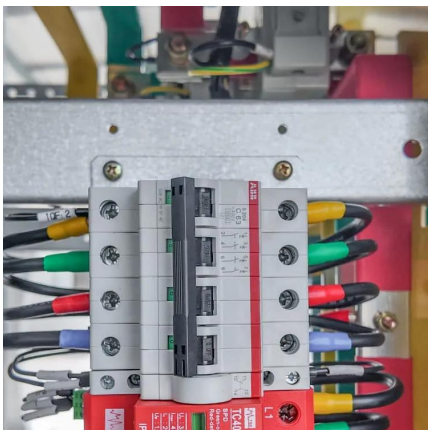
Ultimate Guide of LiFePO4 Lithium Batteries in Series & Parallel

Unlock the ultimate guide to using LiFePO4 lithium batteries in series and parallel. Learn configurations, benefits, and tips for optimal performance!



Can All Lithium Iron Phosphate Battery Packs Be Connected in Series

For example, if you are connecting two 12V LiFePO4 battery packs in series, both battery packs should have a nominal voltage of 12V. Mismatched voltages can lead to uneven ...



Connect Lithium Batteries with Different Amp Hours Safely

Learn to safely connect lithium batteries with different Ah ratings for solar, RV, and off-grid systems. Use BMS and parallel wiring to avoid overcharging.

Charging LiFePO4 Batteries In Parallel And Series Guide

Yes, you can connect 12V lithium batteries in parallel. When connected in parallel, the voltage remains the same (12V in this case), but the capacity (Ah) adds up.





[Ultimate Guide to Charging a LiFePO4 Battery](#)

Charging a LiFePO4 battery correctly is key to longevity. Learn how to use a LiFePO4 battery charger, charge in parallel or series, and avoid ...

Mixing Different Brands of LiFePO4 Batteries: Dos ...

Mixing different brands of LiFePO4 (Lithium Iron Phosphate) batteries can lead to performance issues and safety risks. While it may seem ...



Can LiFePO4 Batteries Be Connected in Series and Parallel?

Yes, LiFePO4 (Lithium Iron Phosphate) batteries can be connected both in series and parallel configurations. Connecting in series increases the overall voltage while ...



Can You Connect LiFePO4 Batteries in Series? An Expert Guide

In the diverse world of battery technology, LiFePO4 (Lithium Iron Phosphate) batteries stand out for their stability, safety, and durability. Given these attributes, many tech ...



[What Is a 12 Volt Battery Pack? Beginner's Guide](#)

A 12 volt battery pack delivers compact DC power for RVs, solar, and devices. Learn how it works, types available, and tips to choose the best one.

[How to Balance Batteries in Series?](#)

Lithtech Lithium Iron Phosphate (LiFePO₄) batteries have a very long lifespan (typically 5 - 15 years, backed up by an 11 year warranty), and ...



How to Wire 12V Batteries in Series & Parallel (w/ ...

Learn how to wire batteries in series, parallel, and series-parallel with our step-by-step tutorial. Increase your battery voltage and amp hour ...



Can All Lithium Iron Phosphate Battery Packs Be ...

For example, if you are connecting two 12V LiFePO4 battery packs in series, both battery packs should have a nominal voltage of 12V. ...



LiFePO4 Battery Common Troubleshooting and Solution

Learn how to troubleshoot common issues with Lithium Iron Phosphate (LiFePO4) batteries including failure to activate, undervoltage ...

Battery Question; I have 2 LiFePo batteries but different brands: can ...

In Series that can create serious issues and not intended for complete Lithium Based Battery Packs. In Parallel there really is no problem is correctly wired. BUT Different AH ...



A Beginner's Guide to Connecting LiFePO4 Batteries ...

Understand the benefits and limitations of connecting LiFePO4 batteries in series. Check out this guide to learn more!



How to Connect LifePo4 Batteries in Series/Parallel ...

In this guide, we'll take you through the essentials of connecting LiFePO4 batteries in series and parallel. For Higher Voltage: Choose a series ...



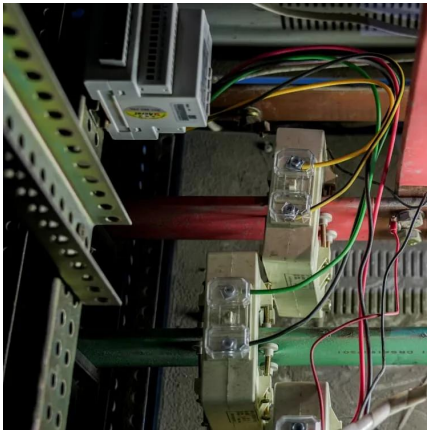
[\[Full Guide\] How to Charge LiFePO4 Batteries](#)

Charging LiFePO4 lithium battery properly is crucial to prolong the battery's lifespan. But how to properly charging the battery? Read to know the 3 best ways to charge.

[Lithium Battery Series / Parallel Operation](#)

Check out our fact information sheet on the Lithium Battery Series and Parallel Operation. Get a breakdown of the basics, BMS, Parallel Operation and more!





How to Connect LifePo4 Batteries in Series/Parallel (or a ...

In this guide, we'll take you through the essentials of connecting LiFePO4 batteries in series and parallel. For Higher Voltage: Choose a series connection. Ideal for systems that ...

Can You Connect LiFePO4 Batteries in Series? An ...

In the diverse world of battery technology, LiFePO4 (Lithium Iron Phosphate) batteries stand out for their stability, safety, and durability. Given ...



Contact Us

For catalog requests, pricing, or partnerships, please visit:
<https://talbert.co.za>