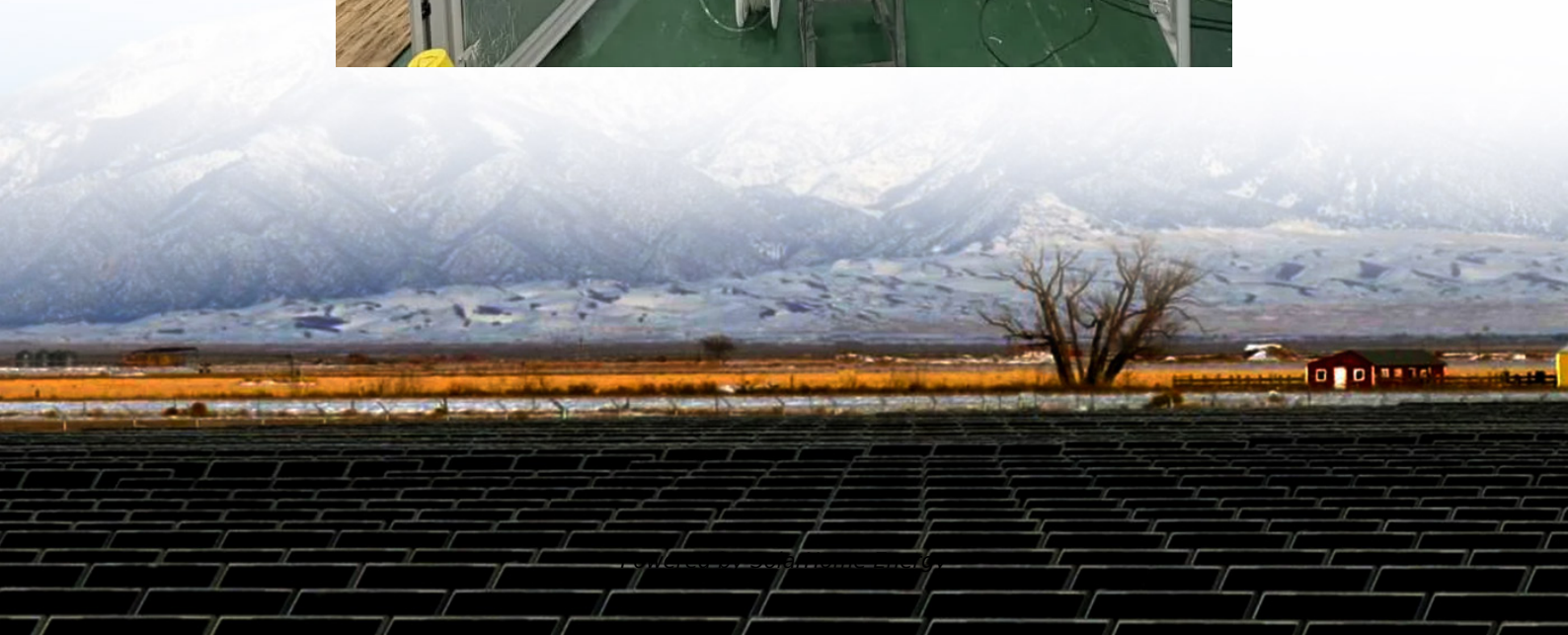


# **The more lithium battery packs are connected in parallel**





## Overview

---

Can lithium batteries be connected in parallel?

Lithium batteries can indeed be connected in parallel, and this method is commonly used to achieve higher capacity and extend the runtime of a battery system. By connecting two or more lithium batteries with the same voltage in parallel, the resulting battery pack retains the same nominal voltage but boasts a higher Ah capacity.

How to balance lithium batteries in parallel?

Balancing lithium batteries in parallel involves measuring each battery's voltage before connection, ensuring they're within an acceptable range of each other, and then connecting all positive and negative terminals together. What Does It Mean For Lithium Batteries To Be Balanced?

.

How to optimize lithium batteries in parallel connection?

Without proper monitoring, excessive current flow between batteries can result in overheating. To enhance safety, it is essential to incorporate fuses, circuit breakers, and a high-quality BMS to monitor voltage levels and prevent short circuits. How to Optimize Lithium Batteries in Parallel Connection 1. Use Identical Batteries.

What is a parallel lithium battery pack?

According to the parallel principle, the current of the main circuit is equal to the sum of the currents of the parallel branches. Therefore, a parallel lithium battery pack with “n” parallel batteries achieves the same charging efficiency as a single battery, with the charging current being the sum of the individual battery currents.

What are the advantages of parallel lithium batteries?



Parallel lithium batteries have many advantages, including increased capacity, enhanced power output, and improved overall performance. When multiple batteries are connected in parallel, their individual ampere-hour (Ah) capacities add up, resulting in a higher total capacity.

Can you put lithium batteries in parallel without protection?

@Tagadac You said not to put lithium batteries in parallel without any protection. My question described a scenario where three sets of 'four 18650s connected in parallel' are connected in series.



## The more lithium battery packs are connected in parallel

---



### Management of imbalances in parallel-connected lithium-ion battery packs

Uneven electrical current distribution in a parallel-connected lithium-ion battery pack can result in different degradation rates and overcurrent issues in the cells. Understanding the ...

### Understanding the Performance of Lithium Batteries in ...

One of the primary advantages of parallel connection is the ability to increase battery capacity. When multiple lithium batteries are connected in ...



### Management of imbalances in parallel-connected lithium-ion ...

Uneven electrical current distribution in a parallel-connected lithium-ion battery pack can result in different degradation rates and overcurrent issues in the cells. Understanding the ...

### Helpful Guide to Lithium Batteries in Parallel and Series

Understand how to connect lithium batteries in parallel and series. Get practical tips and avoid





common pitfalls. Start optimizing your battery setup today!



## Connecting (And Using) High-Capacity Batteries In ...

The problem with using different battery packs in parallel is that unless the batteries are charged to similar voltages, they could generate a ...



## Parallel Battery Packs

We've been looking at truck battery packs and a common thread is the parallel battery packs approach. As there is no need for a propshaft the ...



## chuenerovers

Lithium batteries can indeed be connected in parallel, and this method is commonly used to achieve higher capacity and extend the runtime of a battery system. By connecting two or ...



## How to Balance Lithium Batteries with Parallel BMS?

Parallel lithium batteries have many advantages, including increased capacity, enhanced power output, and improved overall performance. When multiple batteries are ...

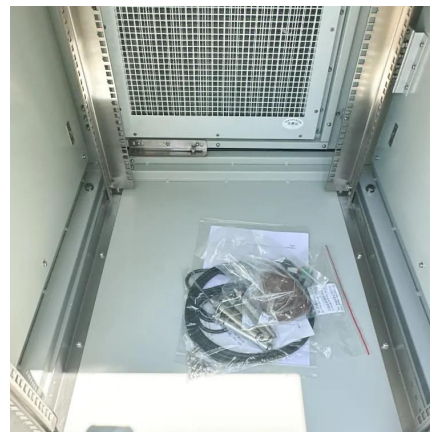


## Understanding the Performance of Lithium Batteries in Parallel Connect

One of the primary advantages of parallel connection is the ability to increase battery capacity. When multiple lithium batteries are connected in parallel, their total ampere ...

## [Can I parallel multiple Lithium Battery Packs?](#)

The short answer is yes, you can parallel multiple lithium battery packs. However, there are several factors you need to consider to ensure a safe and efficient operation. One of ...



## Helpful Guide to Lithium Batteries in Parallel and Series

Part 1. What are lithium batteries in parallel and series? The voltage and capacity of a single lithium battery cell are limited. In actual use, lithium batteries need to be combined ...



## Connecting Lithium Batteries in Parallel

By following the step-by-step guide provided in this article and considering the necessary precautions, you can successfully connect lithium batteries in ...



## **A deep analysis of lithium battery in series and parallel**

This article will comprehensively interpret the differences between battery in series and parallel connections from basic principles and performance.

## **What are the problems with lithium batteries in parallel?**

Lithium batteries connected in parallel maintain a constant voltage while multiplying the total amp hour capacity, delivering extended energy storage and increased ...





### 3. Battery bank wiring

Battery bank wiring matters. It matters how a battery bank is wired into the system. When wiring a battery bank, it is easy to make a mistake. One of the most common mistakes is to parallel all ...

### How to Balance Lithium Batteries with Parallel BMS?

Parallel lithium batteries have many advantages, including increased capacity, enhanced power output, and improved overall ...



### LiFePO4 Lithium Batteries in Series VS Parallel ...

Connecting lithium-ion batteries in parallel or series is more complex than merely linking circuits in series or parallel. Ensuring the safety of ...

### [Wiring Batteries in Series vs. Parallel](#)

The main difference between wiring batteries in series vs. parallel is the impact on the battery system's output voltage and capacity.





## Wiring Batteries in Parallel: Understanding the ...

When lithium batteries are wired in parallel, their positive terminals are connected together, and their negative terminals are also linked. This ...



## Connecting Lithium Batteries in Parallel

By following the step-by-step guide provided in this article and considering the necessary precautions, you can successfully connect lithium batteries in parallel while ensuring safety ...



## Performance Imbalances in Parallel- Connected Cells

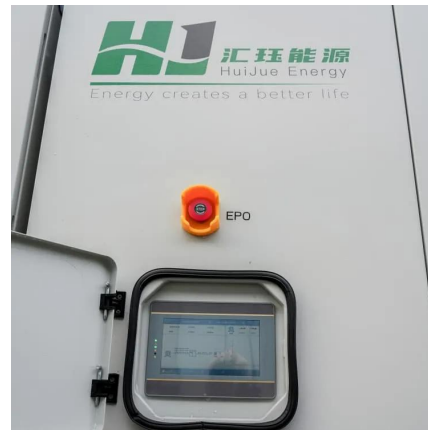
Efficiently addressing performance imbalances in parallel-connected cells is crucial in the rapidly developing area of lithium-ion battery ...





## Temperature Control to Reduce Capacity Mismatch in ...

Battery pack life and performance are also affected by the capacity mismatch in parallel-connected cells. Capacity mismatch can result from manufactured cell variations, including ...



## Influence of the connection topology on the performance of lithium ...

In order to meet the energy and power requirements of large-scale battery applications, lithium-ion cells have to be electrically connected by various serial-parallel ...

## Helpful Guide to Lithium Batteries in Parallel and Series

Understand how to connect lithium batteries in parallel and series. Get practical tips and avoid common pitfalls. Start optimizing your battery ...



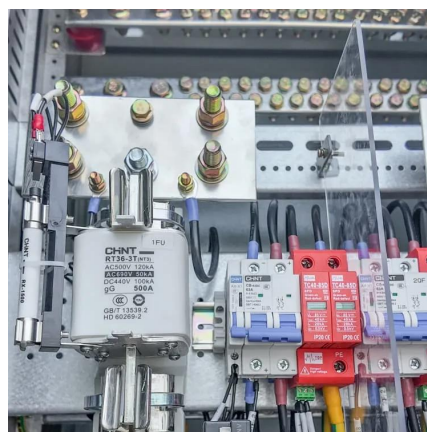
## What are the problems with lithium batteries in parallel?

In parallel, lithium batteries collectively supply current to the load; ideally, they share the load evenly. However, differences in battery health, ...



## batteries

Let's assume I am going to build a Li-ion battery pack with 12 18650s, where I connect four cells together in parallel and then the three sets of four in series. My understanding is that a BMS ...



## Can You Safely Connect Two Lithium Batteries in Parallel?

Yes, you can connect two lithium batteries in parallel to increase capacity while maintaining voltage. Ensure both batteries have identical voltage, capacity, and state of charge to prevent ...

## What are the problems with lithium batteries in parallel?

In parallel, lithium batteries collectively supply current to the load; ideally, they share the load evenly. However, differences in battery health, capacity, or internal resistance ...



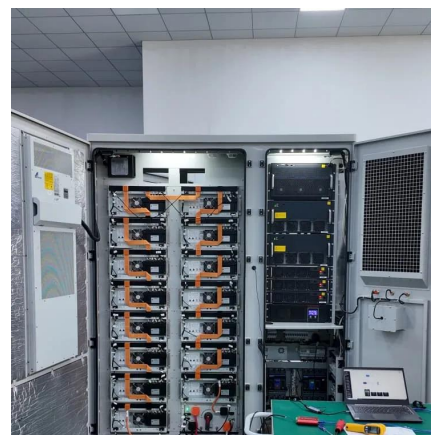


## How to Connect Lithium Batteries in Series and Parallel?

We'll explore the basics and provide detailed, step-by-step instructions on how to connect li-ion cells in series, parallel, and series-parallel ...

## How to Balance Lithium Batteries in Parallel

Balancing lithium battery packs, like individual cells, involves ensuring that all batteries within a system maintain the same state of charge. This process is essential when ...



## Contact Us

---

For catalog requests, pricing, or partnerships, please visit:  
<https://talbert.co.za>