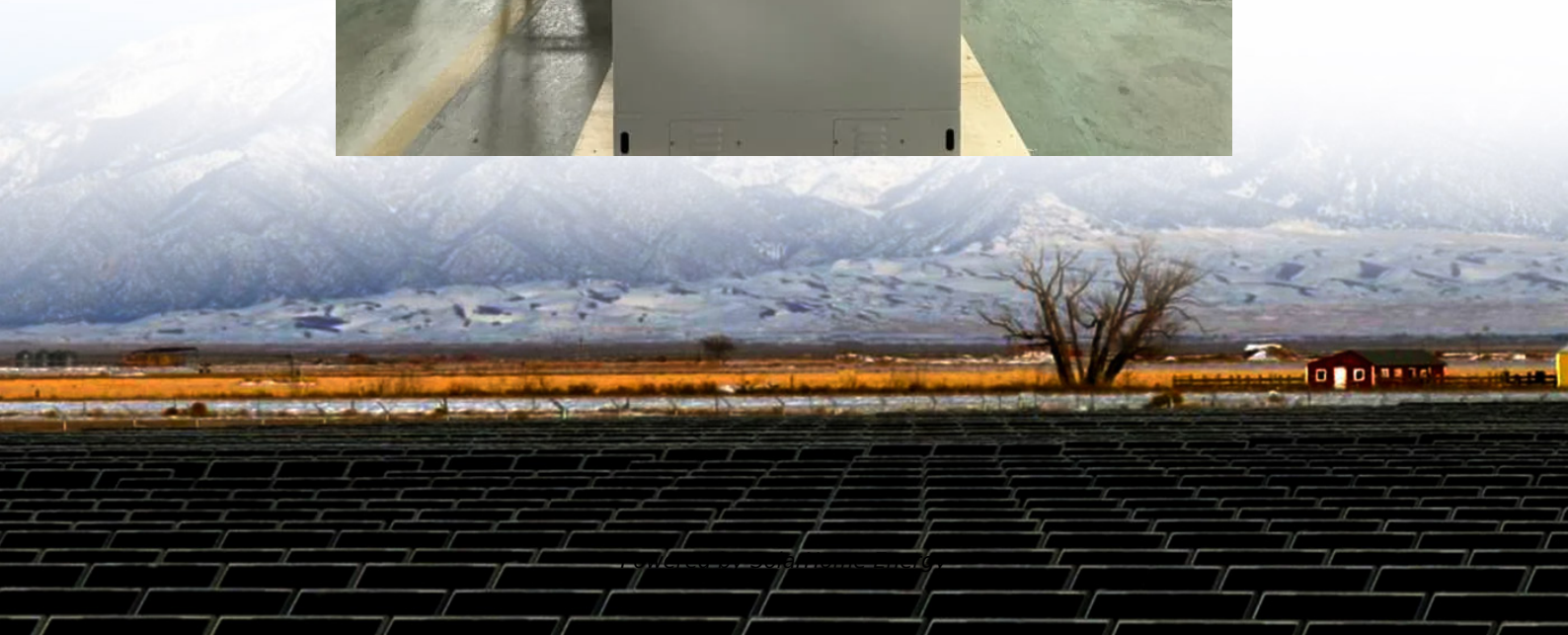


Swedish communication base station wind power site planning





Overview

What is the Swedish Wind centre?

Research about wind power planning, siting, turbine technology, operation and maintenance as well as integration into the electricity system. Swedish Wind Centre, SWC, is a hub for and develops research-based knowledge about wind power. SWC wants to make knowledge about wind power available and easy to understand for everyone.

How to achieve the Swedish goals for wind power?

Project period: 2018-2023 In order to reach the Swedish goals for wind power, it is necessary to find good sites for development. In order to coordinate different data, competences and actors, the planning of wind power needs to be developed on a regional level.

Why do we need offshore wind power in Sweden?

At sea, winds are steady and strong. Offshore turbine blades are generally longer in relation to the tower and the swept area is larger, hence more energy per turbine can be extracted. In the future, off-shore wind power in southern Sweden will complement this expansion. 3. Sweden's large-scale green industry.

How does wind power work in Sweden?

Sweden is in a uniquely good position to meet these demands due to the properties of hydro and wind power, which allow the power generation to interact and shift. Water can be stored when the wind is strong and be released to increase electricity output when the wind calms.

How do Swedish wind power developers attract investors?

Environmentally conscious companies that work towards climate Swedish wind power developers are at the forefront in attracting investors – often foreign investment funds and insurance companies – through initiatives such



as long-term power purchase agreements (PPA). Today, most new investments are realized through PPAs or other price hedging.

How many wind power technician students are there in Sweden?

Currently, specific wind power technician education is only offered in Varberg and Strömsund but the total of 55 students per year is far from enough. Instructs the Swedish National Agency for Higher Vocational Education to quickly act to make space for larger numbers of wind power technician students.



Swedish communication base station wind power site planning

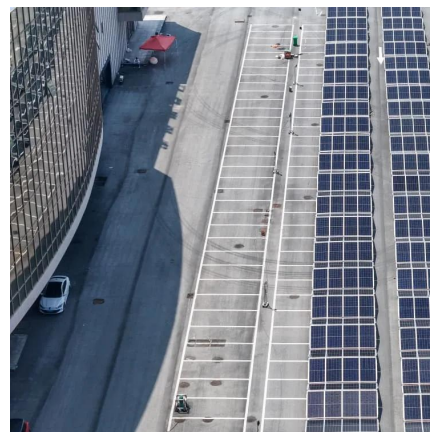


Sweden , HHWE

Onshore wind still growing: While offshore wind struggles, onshore wind continues to expand. Sweden remains an attractive market for land-based wind projects, with ongoing investments ...

[\(PDF\) Small windturbines for telecom base stations](#)

As the incessant demand for wireless communication grows, off-grid telecommunication base station sites continue to be introduced around ...



Welcome , Swedish Wind Centre

The SWC conducts research in five research themes about wind power in Nordic conditions: Planning of wind power, Siting, Turbine, Operation and Maintenance and Electrical System ...

Basestation

A base station (BS) is defined as a fixed communication facility that manages radio resources for one or more base transceiver



stations (BTSS), facilitating radio channel setup, frequency ...



Communication base station power station based on wind-solar

A wind-solar hybrid and power station technology, applied in the field of communication, can solve problems such as the difficulty of power supply for communication base stations, and achieve ...



The Swedish transmission system operator's perspective on planning

This work discusses the Swedish transmission system operator's perspective on planning series-compensated network sections containing wind power plants, providing in ...



Plans For More Offshore Wind Power Proposed In Sweden

Although not specifying the capacity potential of each site, the sites have the combined conditions for an annual production of 120 TWh from offshore wind power. The new ...





Swedish wind power expansion: Conflicting responsibilities ...

Sweden has experienced two decades of wind power expansion and enters a broad diffusion phase. In this study the aim is to deepen the knowledge of the municipal role in this ...



Swedish Wind Energy Association

Towards 2025; the accumulated installed wind power is likely reaching 18 000 MW, with actual production reaching above 50 TWh and normal year production of about 52 TWh, making wind ...

Grid development plan 2024 2033

Foreword Svenska kraftnät has released three versions of its system development plan to provide a comprehensive overview of the future development of the power system. The system ...



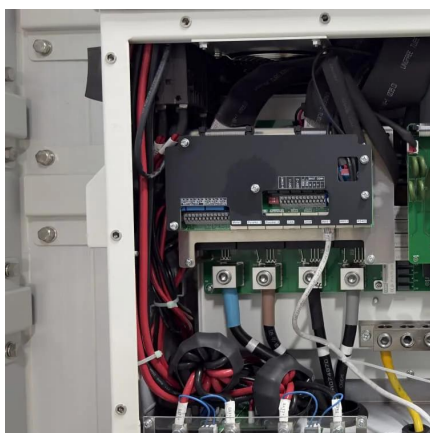
Sweden's 100 GW Offshore Wind Power Ambition: Unlocking a ...

Sweden's offshore wind power sector holds immense potential but faces regulatory and financial challenges. How can the country address this?



Connection of offshore wind power

A new report, published on October 13, 2023, outlines preliminary proposals for a new working process and the capacity-related conditions for connecting electricity production ...



Grid development

Grid projects We are strengthening the Swedish national grid with new lines and stations to take care of new wind power, eliminate limitations in ...

Grid development

We are strengthening the Swedish national grid with new lines and stations to take care of new wind power, eliminate limitations in the grid and to meet society's demands for a ...



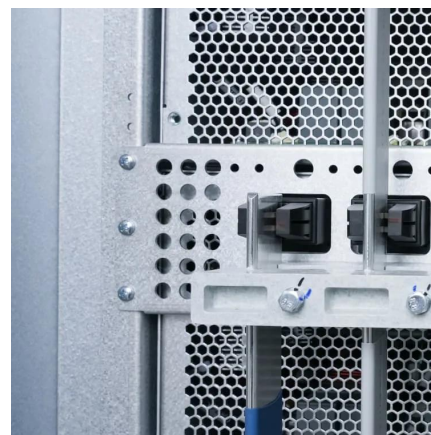


Sweden's draft integrated national energy and climate plan

This draft of the integrated national energy and climate plan is a summary of Sweden's climate change and energy policies. A climate policy framework was adopted by the Riksdag (the ...

REWIND

In order to reach the Swedish goals for wind power, it is necessary to find good sites for development. In order to coordinate different data, competences and actors, the planning of ...



Swedish Wind Centre

Research about wind power planning, siting, turbine technology, operation and maintenance as well as integration into the electricity system.

When wind power is planned

Here is information on what you need to consider regarding connection of wind power.



Grid development

We are strengthening the Swedish national grid with new lines and stations to take care of new wind power, eliminate limitations in the grid and to ...



Communication Performance Analyses of Renewable and Fuel Power ...

Journal of Network and Computer Applications, 2018 This paper aims to consolidate the work carried out in making base station (BS) green and energy efficient by integrating renewable ...



The Swedish transmission system operator's perspective on ...

This work discusses the Swedish transmission system operator's perspective on planning series-compensated network sections containing wind power plants, providing in ...





Wind Power Plants in Sweden (Map)

Data and information about Wind power plants and their location plotted on an interactive map of Sweden.



Start

The Swedish Wind Energy Association (SWEA) is the trade association for companies working with wind power. Our overriding goal is to ensure that ...

The Swedish Transmission System Operator's Perspective ...

To mitigate unbalance, overhead lines in the Swedish transmission system are transposed. If a new station is built along an existing line, the transposition scheme is updated to avoid ...



[Planning of wind power , Swedish Wind Centre](#)

A crucial aspect is integrating wind power into a broader energy system while balancing energy production, biodiversity, and societal needs. Current research connects to state-of-the-art ...



Roadmap 2040

At the end of 2017, they decided to expand the restrictions even further and in the suggestion to the Swedish Marine Spatial Planning, the restrictions are so extensive that off-shore wind ...



Contact Us

For catalog requests, pricing, or partnerships, please visit:
<https://talbert.co.za>