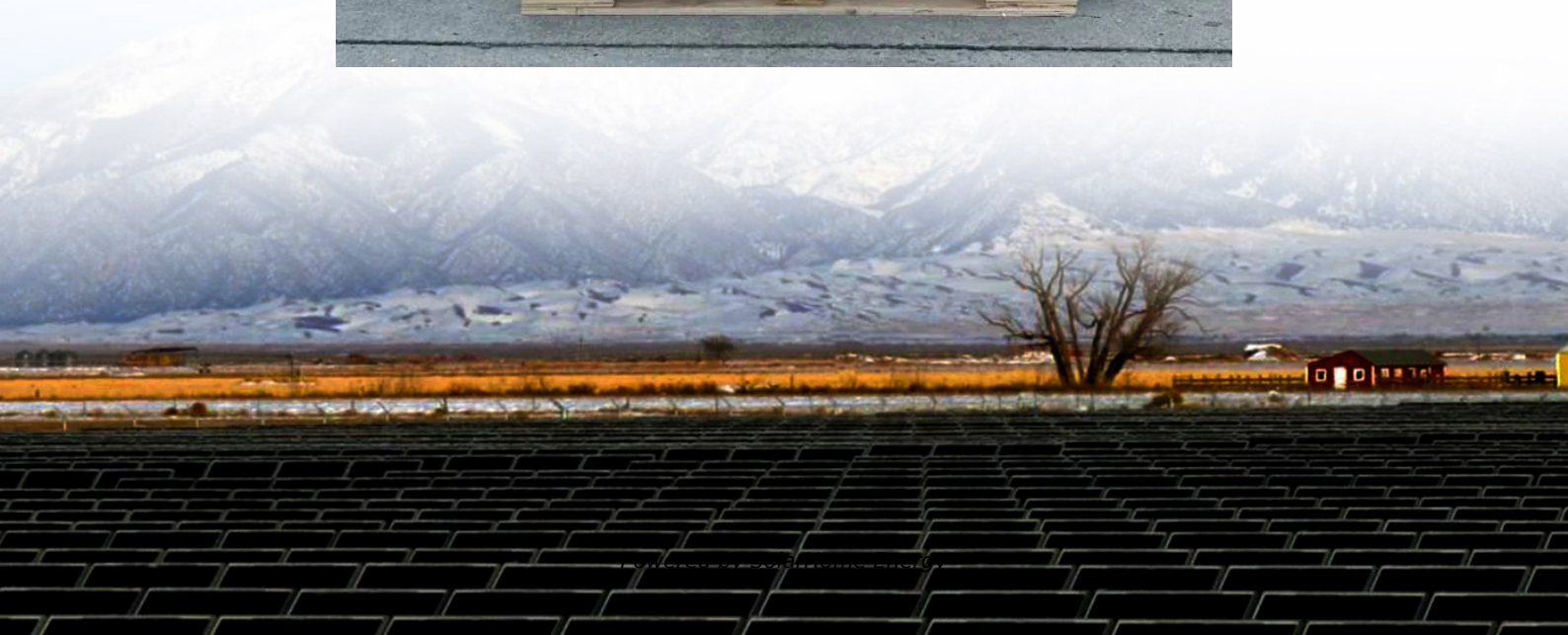


Signal base station communication equipment





Overview

A base transceiver station (BTS) or a baseband unit (BBU) is a piece of equipment that facilitates between (UE) and a network. UEs are devices like (handsets), phones, computers with connectivity, or antennas mounted on buildings or telecommunication towers. The network can be that of any of the wireless communication technologies like , , , or other



Signal base station communication equipment



EMF

A base station is made up of antennas connected by cable to electronic (radio) equipment usually housed in a room or 'shelter'. Some base stations have ...

base station in 5g

A 5G base station is a complex system that integrates advanced RF technology, digital signal processing, and network architecture to deliver ...



Types of radio communication equipment , AEROTHAI Business

The Air-to Ground radio system consists of the following components: 1. The Air-to-ground Base Station (A/G base station) is used for air-to-ground communications within a radius of 200 ...

Base stations and networks

Base stations enable mobile communications
Mobile phones and other mobile devices require a network of base stations in order to function.



The base station antennas transmit and receive ...

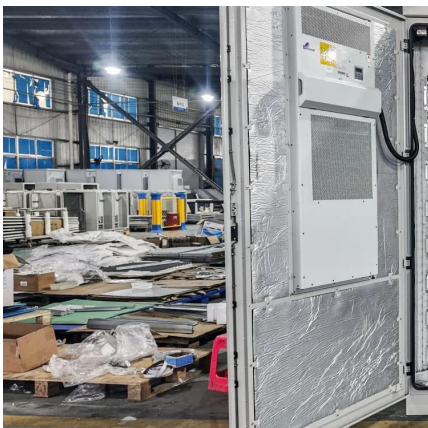


[What Are Base Station Antennas? Complete Guide](#)

This article will provide a thorough outlook on base station antennas from working principles, applications, installation and maintenance details and everything in between.

Base Stations

The present-day tele-space is incomplete without the base stations as these constitute an important part of the modern-day scheme of wireless communications. They are ...



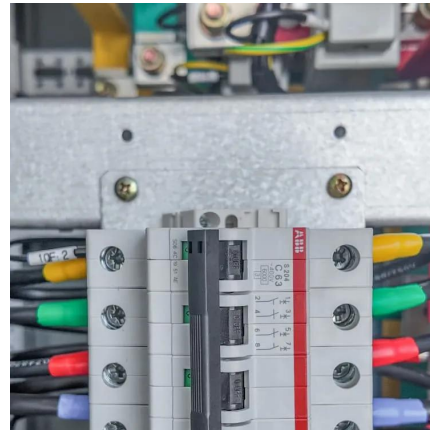
[Equipment for Your Ham Radio Station](#)

Equip your Ham Radio station with our comprehensive guide to essential equipment. From transceivers to antennas, we cover it all.



Base transceiver station

A base transceiver station (BTS) or a baseband unit[1] (BBU) is a piece of equipment that facilitates wireless communication between user equipment (UE) and a network.



The Architecture of Modern Ground Stations

The architecture of modern ground stations is characterized by a combination of essential structural components, including antennas, radomes, ...

Understanding the Basics: What is a Base Transceiver Station?

The base station itself consists of antennas, transceivers, a baseband unit (BBU) that handles the digital processing of radio signals, and other hardware that process the signals.



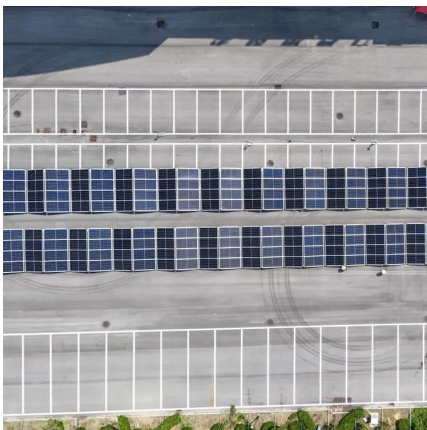
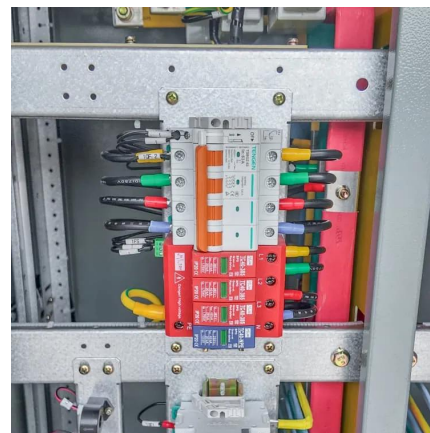
Types and Applications of Mobile Communication Base Stations

In order to facilitate the distinction between the concepts and characteristics of different mobile communication base stations, Bone links will analyze macro base stations, ...



Base Stations and Cell Towers: The Pillars of Mobile ...

It consists of electronic equipment, including transceivers, antennas, and signal processors, that manage the communication within a ...



What Is A Base Station?

A base station is a piece of equipment that facilitates wireless communication between devices and a network. It contains the necessary hardware and software to transmit ...

Types and Applications of Mobile Communication ...

In order to facilitate the distinction between the concepts and characteristics of different mobile communication base stations, Bone links will ...





Base transceiver station

A base transceiver station (BTS) or a baseband unit (BBU) is a piece of equipment that facilitates wireless communication between user equipment (UE) and a network. UEs are devices like mobile phones (handsets), WLL phones, computers with wireless Internet connectivity, or antennas mounted on buildings or telecommunication towers. The network can be that of any of the wireless communication technologies like GSM, CDMA, wireless local loop, Wi-Fi, WiMAX or other

Base Stations and Cell Towers: The Pillars of Mobile Connectivity

It consists of electronic equipment, including transceivers, antennas, and signal processors, that manage the communication within a specific geographical area or "cell."



2-Way Radio Base Stations -- Silke Communications

The company manufactures communications equipment of unsurpassed reliability and value for use by public safety professionals and government agencies, as well as radios for use in a ...

Base Stations

The present-day tele-space is incomplete without the base stations as these constitute an important part of the modern-day scheme of wireless ...



What is a base station?

A base station serves as a central connection point for a wireless device to communicate. It further connects the device to other networks or devices, usually through ...



What is a Base Station in Telecommunications?

Discover the role and functionality of a base station in telecommunications networks. Learn how these critical components manage communication ...



5G RAN Architecture: Nodes And Components

4. Base Station Base Station (BS) is a key component of the 5G Radio Access Network (RAN) architecture that serves as an access point for wireless connections between ...



The Base Station in Wireless Communications: The ...

The user's terminal uses the base station from which the signal is the strongest at a given moment. If necessary, an automatic change of station ...



Base station

In radio communications, a base station is a wireless communications station installed at a fixed location and used to communicate as part of one of the ...



[What Are Base Station Antennas? Complete Guide](#)

This article will provide a thorough outlook on base station antennas from working principles, applications, installation and maintenance ...



[b: Signal Path from Base station to User Equipment](#)

Download scientific diagram , b: Signal Path from Base station to User Equipment from publication: A Retrospection of Channel Estimation Techniques for 5G ...



What is a Base Station in Telecommunications?

Discover the role and functionality of a base station in telecommunications networks. Learn how these critical components manage communication between mobile devices and the network, ...

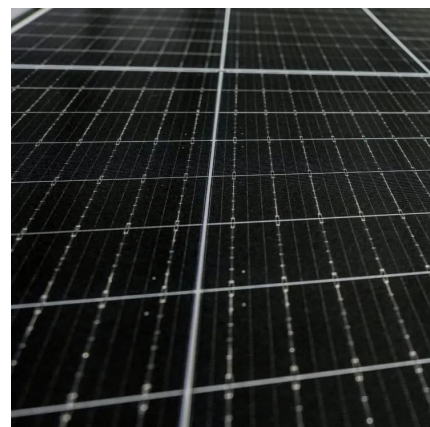


What is RS (Relay Station)

A Relay Station (RS) is a crucial component in wireless communication networks. Let's dive into the technical details: Purpose and Need for Relay Stations: In wireless communication ...

Guide for the Selection of Communication Equipment for ...

2. OVERVIEW OF COMMUNICATION SYSTEMS A communication system is made up of devices that employ one of two communication methods (wireless or wired), different types of ...





2-Way Radio Base Stations -- Silke Communications

The company manufactures communications equipment of unsurpassed reliability and value for use by public safety professionals and government agencies, as ...

What Is Base Station in Mobile Communication? - The Heart of ...

What is a Base Station? A base station, also known as a cell site, is a critical component of a mobile communication network. It is a fixed structure that houses the ...



What is a Cell Tower? Understanding How Cell Towers Work

Cabling: Coaxial and/or fiber lines are used to transmit the signal received from the antenna to the base station or vice versa
Cabinets and Shelters: Buildings at the base of cell ...

Understanding the Basics: What is a Base ...

The base station itself consists of antennas, transceivers, a baseband unit (BBU) that handles the digital processing of radio signals, and ...



Contact Us

For catalog requests, pricing, or partnerships, please visit:
<https://talbert.co.za>