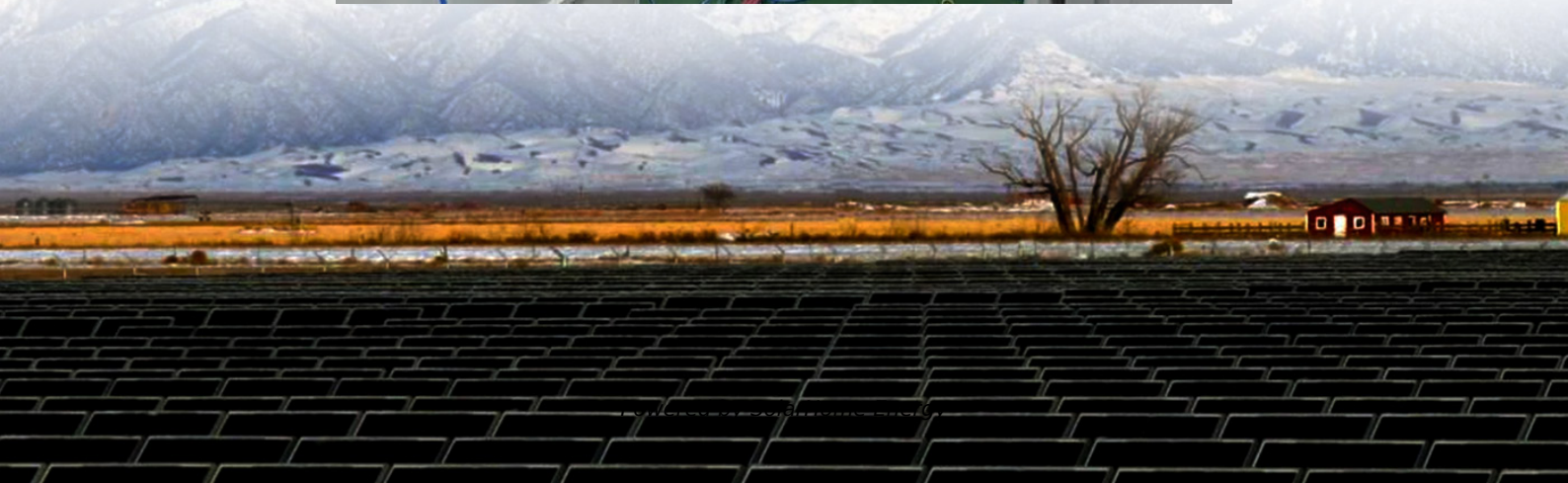


Replacement of power distribution cabinet at base station





Overview

Why should power distribution equipment be replaced?

Maintenance cost: Maintenance costs and the risk of product failure rise as the product ages. Modernizing and upgrading existing power distribution equipment, rather than replacing it, can reduce maintenance costs while saving time and labor.

How can maintenance and modernization improve your substation's safety & reliability?

Combining proper maintenance with modernization can help enhance your substation's safety and reliability by addressing both existing wear and outdated technology. Many of the challenges that we will discuss below should be weighed and considered prior to starting.

Why do substations need maintenance?

Their stabilization of these voltage levels prevents grid faults and helps to manage the power flow, ultimately resulting in a reliable electrical supply to your equipment. Routine maintenance can prove invaluable for your substation's reliability in preventing equipment failures while extending the lifespan of its critical components.

Why should you upgrade your power distribution equipment?

Modernizing and upgrading existing power distribution equipment, rather than replacing it, can reduce maintenance costs while saving time and labor. Spare parts availability: If spare parts are no longer readily available, the continuity of service and support is at risk.

Do Your substations suffer from poor maintenance & aging infrastructure?

However, their reliability begins to suffer when your substations suffer from poor maintenance and an aging infrastructure. The good news is that proactive measures on your part can help prevent these disruptions.



Why do power stations need maintenance?

Maintaining the reliability of these power stations is crucial to reducing problems that may arise while also protecting the equipment and enhancing your operational efficiency. However, their reliability begins to suffer when your substations suffer from poor maintenance and an aging infrastructure.



Replacement of power distribution cabinet at base station

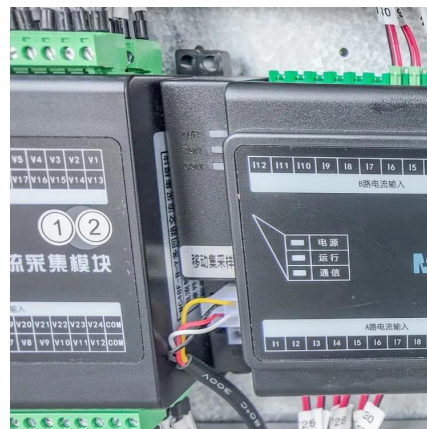


Power distribution cabinet installation method and ...

The power distribution cabinet should have a common steel base, the overall layout is neat, and the wiring inside the cabinet is correct and reliable. The ...

An optimal dispatch strategy for 5G base stations equipped with ...

Abstract The escalating deployment of 5G base stations (BSs) and self-service battery swapping cabinets (BSCs) in urban distribution networks has raised concerns ...



Electrical Distribution Board Installation (DB Box / ...

Distribution Board (DB Box) installation services available at Affordable prices by #1 recommended Licensed Electrician in Singapore. Warranty provided.



Planning, Implementing and Application of Cabinet Power Distribution

Get current with the latest in electrical

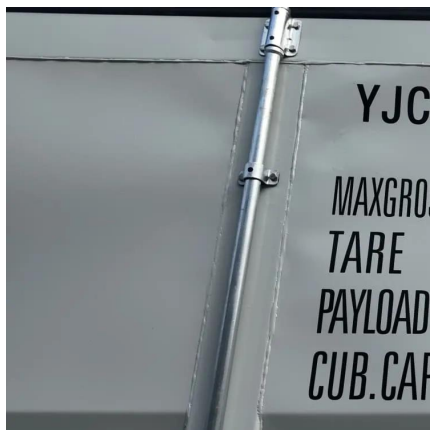


installation requirements with the reorganized and updated NFPA 70®, National Electrical Code® (NEC®), 2023 edition. The NEC is the ...



Correct Installation and Maintenance of Power ...

Installation of Power Distribution Cabinets#### (1) Preparations Before Installation1. **Site Preparation** - The installation site should be dry and we



Power Switching and Distribution Cabinets

Power conditioning and distribution cabinet that offers the benefits of a custom-tailored system while offering the convenience and cost savings of a pre-packaged, factory-tested solution.



GRP Electrical Cabinets & Enclosures

In the energy industry, electrical cabinets are instrumental in power distribution and control. They are deployed in power plants, substations, and renewable ...





Products

Delta ensures continuity for our customers' mission critical operations and reduces their total cost of ownership. Our efficient and highly reliable products and services range from uninterruptible ...



[What Is A Power Distribution Cabinet](#)

A power distribution cabinet is a crucial device that is used to distribute electrical power within a building, industrial facility, or any other setting that requires a controlled and ...



REPLACE 5KV POWER LINES, SUBSTATION A, PHASE 4 ...

This \$3.3 million project consisted of the replacement of the old 4160V system for a new 12.47kV power distribution upgrade of Substation A at Travis Air Force Base in beautiful Fairfield, ...



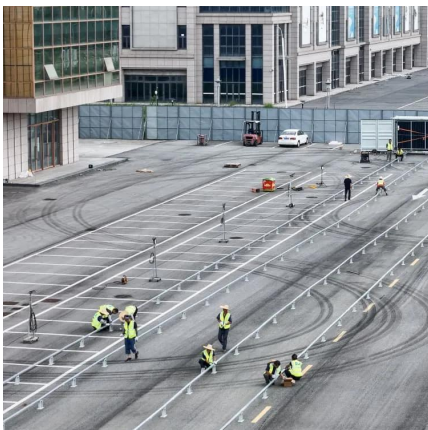
[Replacing a Distribution Substation](#)

Discover key considerations for replacing a distribution substation, including design, equipment and more to ensure long-term reliability.



Electrical Distribution Modernization and Upgrade Solutions

Schneider Electric offers direct replacement and retrofit options to upgrade low-voltage motor control centers. New direct replacement MCC units are available for many vintage and current ...



Substation Replacement

The project identified process unit electrical loads for power distribution replacement, specified substation equipment, incorporated a closed transition main tie main switchgear section, and ...

Retrofit versus Replace: What Should you do with our Power Distribution

For power distribution systems, there's another important R -- retrofit. Retrofitting focuses on reusing, refurbishing, recycling, and renewing electrical distribution equipment, ...





Planning, Implementing and Application of Cabinet Power ...

Get current with the latest in electrical installation requirements with the reorganized and updated NFPA 70®, National Electrical Code® (NEC®), 2023 edition. The NEC is the ...

Substation Maintenance & Upgrades: Retrofitting vs. Replacement

When upgrading your facility, you must decide whether to opt for retrofitting or a complete replacement. Each option has its own pros and cons, which should be thoroughly ...



DC Direct Current Power Distribution Unit DCDU-12B

Direct Current Distribution Unit-12B (DCDU-12B) provides -48VDC power for other components in a cabinet. It consists of two input terminal blocks and 10 ...

Substation Maintenance & Upgrades: Retrofitting vs.

When upgrading your facility, you must decide whether to opt for retrofitting or a complete replacement. Each option has its own pros and cons, ...



REPLACE 5KV POWER LINES, SUBSTATION A, ...

This \$3.3 million project consisted of the replacement of the old 4160V system for a new 12.47kV power distribution upgrade of Substation A at Travis Air Force ...



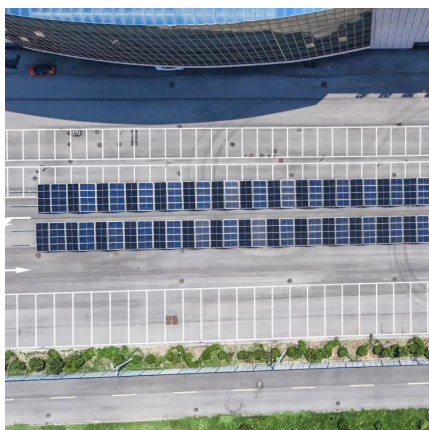
Correct Installation and Maintenance of Power Distribution Cabinets

Installation of Power Distribution Cabinets#### (1) Preparations Before Installation1. **Site Preparation** - The installation site should be dry and we



Contact :: U.S. Army Garrison Bavaria

To dial a German commercial telephone number from within the United States: Dial 011 49 and drop the first 0 of the commercial number. To dial a German commercial telephone ...





[Kstar power distribution cabinet series products](#)

The product group: ups output distribution cabinet, Column header cabinet Kstar precision distribution cabinet is mainly used in small and medium-sized data centers, network computer ...

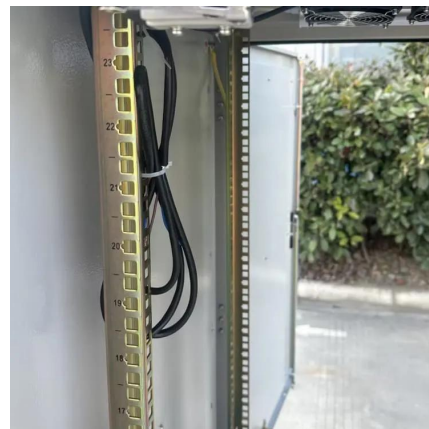


Galaxy Cabinet Power Distribution , Schneider Electric ...

Power Distribution Units (PDUs) are reliable, scalable, and intelligent high-density power distribution units ideal for large data centers. RPP (Remote Power ...

[Custom Power Distribution Cabinets , Riteoptic](#)

AC Power Distribution Cabinet Riteoptic AC power distribution cabinet is mainly suitable for AC power distribution in mobile base stations, microwave stations, ...



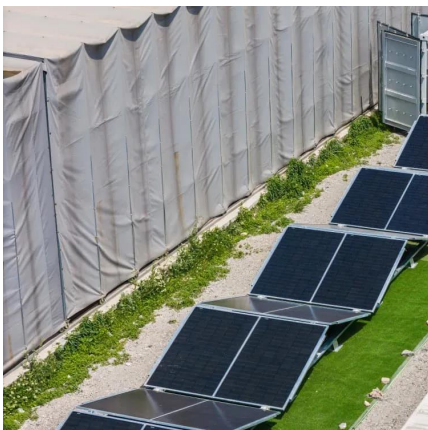
What is a Base Station Cabinet

A base station cabinet protects telecom equipment, ensures stable power, cooling, and security, and supports 4G, 5G, IoT, and emergency ...



DC power supply cabinet working principle and role ...

DC power supply cabinet is referred to as DC cabinet, its role to provide stable DC power supply to power-using equipment, a power ...



Retrofit versus Replace: What Should you do with our ...

For power distribution systems, there's another important R -- retrofit. Retrofitting focuses on reusing, refurbishing, recycling, and renewing ...

[RATH® Analog AOR Systems Installation](#)

Hardware Installation- Base Station Install back-box and plan which conduit knockouts are needed for analog communications line, station cabling and power runs Mount SmartRescue ...





Power distribution cabinet installation method and precautions

The power distribution cabinet should have a common steel base, the overall layout is neat, and the wiring inside the cabinet is correct and reliable. The trench cable is arranged neatly on the ...

Contact Us

For catalog requests, pricing, or partnerships, please visit:
<https://talbert.co.za>