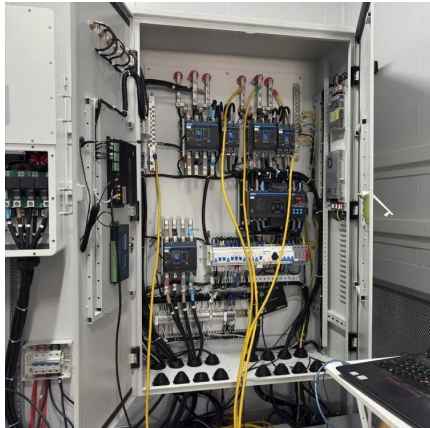


Photovoltaic solar panels shade the environment





Photovoltaic solar panels shade the environment

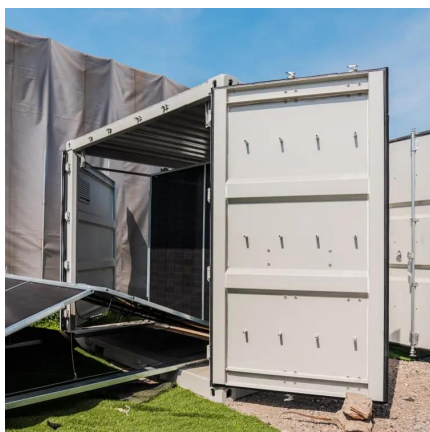


Effects of Shading on Solar Panels

Explore the effects of shading on solar panels to maximize your clean energy investment, including what can be done to minimize any ...

[Solar Panel Shading Analysis: A Detailed Guide](#)

Solar panel shading analysis refers to the evaluation of shadows on solar panels to determine how shading affects energy production. This process involves identifying potential ...



[Game-Changer Solar Panels That Work in the Shade](#)

Solar panels are less effective in the shade because the amount of sunlight reaching the solar cells is reduced. However, they can still produce ...

Effects of Shading on Solar Panels

Explore the effects of shading on solar panels to maximize your clean energy investment, including what can be done to minimize any negative impacts of shade.



Solar Panels in Shaded Areas: Key Considerations for ...

Discover how to optimize solar panel performance in shaded areas. This article explores shading challenges, smart technologies like microinverters, site ...



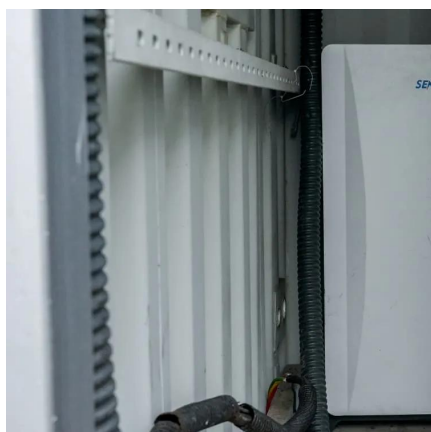
Solar Photovoltaic: SPECIFICATION, CHECKLIST AND ...

The Renewable Energy Ready Home (RERH) specifications were developed by the U.S. Environmental Protection Agency (EPA) to assist builders in designing and constructing ...



[Solar Panel Shading: All You Should Know to ...](#)

One of the most important factors that can affect the solar panels' performance is shading. Even a small shade can lower the energy output of a solar array. ...





Shading's Impact on Solar Panel Performance

Shading occurs when objects or obstructions partially or completely block sunlight from reaching the solar panels. Shading can be broadly ...

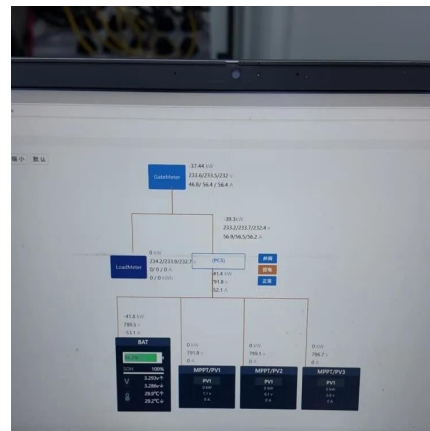


Solar Panels in Shaded Areas: Key Considerations for Maximum ...

Discover how to optimize solar panel performance in shaded areas. This article explores shading challenges, smart technologies like microinverters, site analysis tools, and strategic placement ...

Effects of different environmental and operational ...

The rapid depletion of fossil fuel reserves as well as their adverse environmental impact heighten the quest for cleaner and sustainable energy ...



How farmers can install solar panels in fields without ...

Agrivoltaics, which pairs solar panels with farming, offers a path to decarbonise agriculture. But how do we make it work for crops and energy? A ...



Do Solar Panels Work in the Shade? Uncover the Truth

People often wonder if shade makes solar panels useless. The truth is, solar panels can still produce electricity in the shade, but at a reduced ...



Shading effect on the performance of a photovoltaic ...

Photovoltaic modules are very sensitive to the reduction of solar irradiation due to shading. Shading can be caused by a fixed obstacle (wall, ...



Solar Panel Shading: All You Should Know to Minimize Its Impacts

One of the most important factors that can affect the solar panels' performance is shading. Even a small shade can lower the energy output of a solar array. Several sources may cast shade on ...



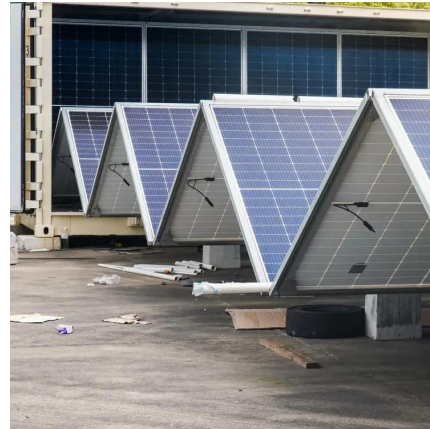
Floating solar panels (floatovoltaics): what to know

Not every roof is suitable for solar panels - factors such as shade, obstructions, age, and available space can have property owners looking for other locations for installation. ...



Existing evidence on the effects of photovoltaic panels on ...

Background To phase out fossil fuels and reach a carbon-neutral future, solar energy and notably photovoltaic (PV) installations are being rapidly scaled up. Unlike other ...



Shading Effect of Photovoltaic Panels on Growth of Selected ...

Fossil fuels, which are non-renewable energy sources, are the main energy source for our society. It leads to depletion, and the current goal of reducing its effect on the ...



Heat & Shade: Keys to Solar Panel Efficiency

Understanding what affects solar panel efficiency, especially key environmental factors like temperature and shade, is crucial for maximizing their performance. Knowing how these ...



Partial shading by solar panels delays bloom, increases floral

Here we investigated the effects of solar arrays on plant composition, bloom timing and foraging behavior of pollinators from June to September (after peak bloom) in full shade ...





What Is The Effect Of Shading On Solar Panels?

Even a small amount of shade on a solar panel can lead to a substantial reduction in energy production. This guide explores the impact of shading on solar panel output, the ...



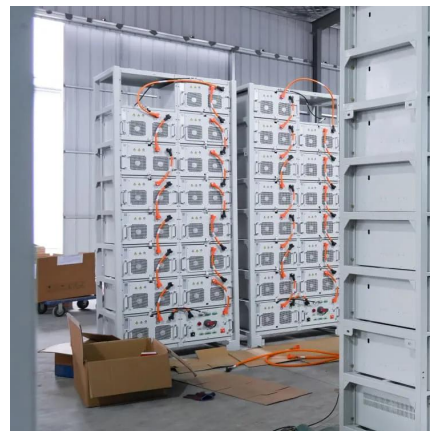
The Impact of Shading and Obstructions on Solar Panel ...

One of the most significant factors affecting solar panel performance is shading and obstructions. This comprehensive guide will dive into shading, its impact on solar energy ...



Environmental Benefits of Solar Energy (10+ Benefits)

Explore the numerous environmental benefits of solar energy, from reducing greenhouse gas emissions to promoting healthier communities. ...



Shading's Impact on Solar Panel Performance

Discover the crucial role shading plays in solar panel efficiency. Learn how to optimize your solar setup and explore the impact of shade on ...



How Do Solar Panels Work In Shade Or Bad ...

On rainy or cloudy days, photovoltaic panels can produce between 10 and 25 percent of their optimal capacity. The exact amount varies on how dark and ...



How Trees and Shade Affect Solar Panels

Solar panels are a cost-effective sustainable energy solution for homes and businesses. Unfortunately, overlooked factors, like trees and shade, can significantly affect the ...

How Do Solar Panels Work In Shade Or Bad Weather? , IGS

On rainy or cloudy days, photovoltaic panels can produce between 10 and 25 percent of their optimal capacity. The exact amount varies on how dark and heavy the rain and cloud cover is. ...



Compatibility between Crops and Solar Panels: An ...

The use of alternative energy in agricultural production is desired by many researchers, especially for protected crops that are grown in greenhouses with ...



Shading's Impact on Solar Panel Performance

Shading occurs when objects or obstructions partially or completely block sunlight from reaching the solar panels. Shading can be broadly categorized into two types: partial ...

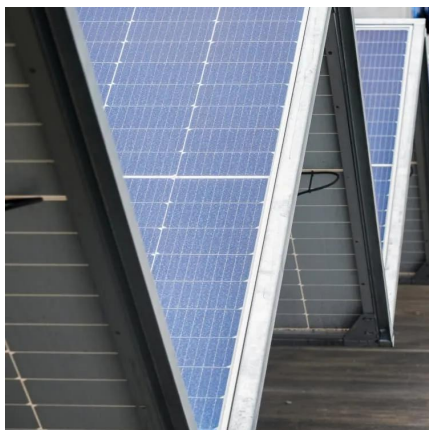
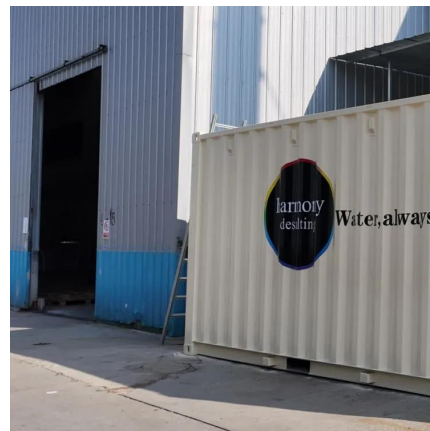


Solar Panel Shading Analysis: A Detailed Guide

Solar panel shading analysis refers to the evaluation of shadows on solar panels to determine how shading affects energy production. This ...

Game-Changer Solar Panels That Work in the Shade

Solar panels are less effective in the shade because the amount of sunlight reaching the solar cells is reduced. However, they can still produce some electricity, ...



Environmental impacts of solar photovoltaic systems: A critical review

Photovoltaic (PV) systems are regarded as clean and sustainable sources of energy. Although the operation of PV systems exhibits minimal pollution during their lifetime, ...



Contact Us

For catalog requests, pricing, or partnerships, please visit:
<https://talbert.co.za>