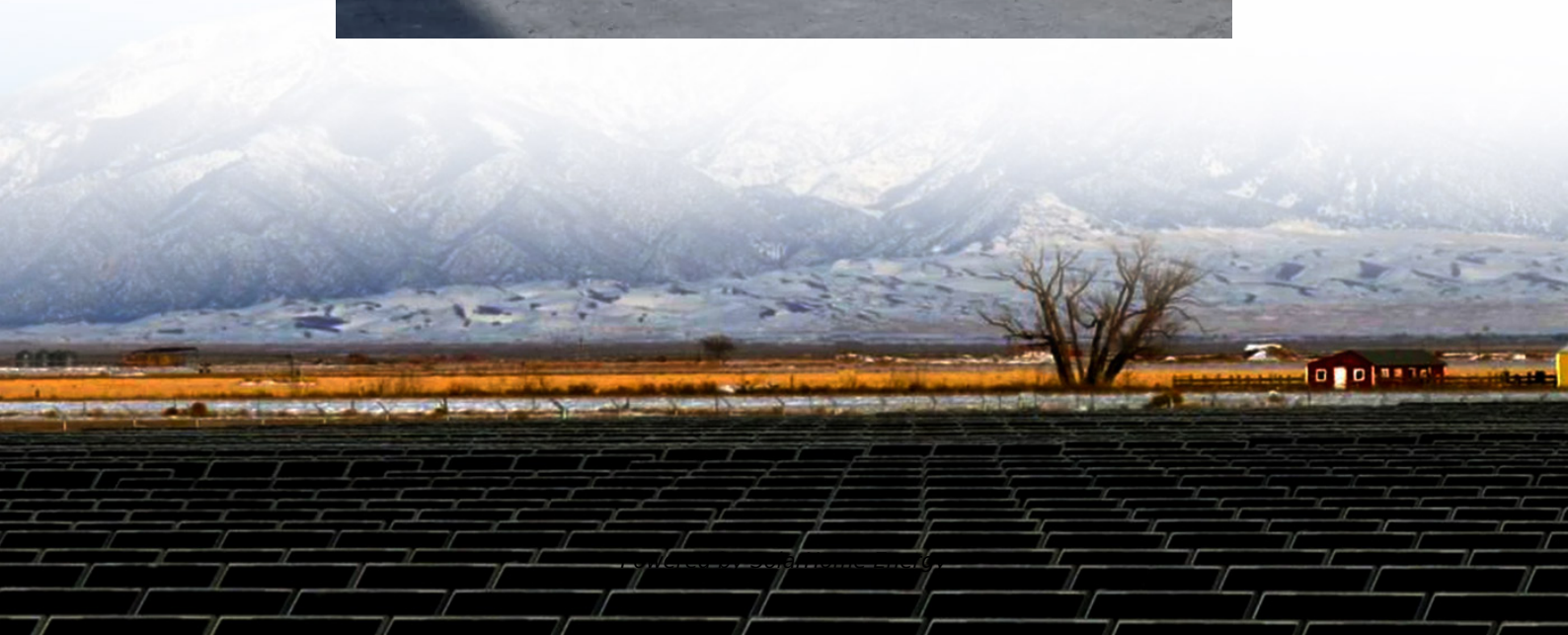


Photovoltaic solar panel angle





Overview

The best angle for solar panels usually matches your latitude. Flatter tilts work better in summer, steeper tilts in winter. Adjustable mounts give more output but cost more. Roof pitch, shading, and budget also affect the right angle. Fixed setups near your latitude are simple and efficient.



Photovoltaic solar panel angle



Solar Orientation Calculators: Finding the Best Angle ...

Discover how to use a solar orientation calculator for optimal solar panel angles and tilt. Maximize efficiency and save on energy costs.

What's the Best Angle for Solar Panels to Get ...

To enable this interaction, it's generally wise to point solar panels perpendicular to the sun's rays. However, unlike direction, tilt angle varies ...



What's the Best Angle for Solar Panels to Get ...

Learn what goes into determining the best angle for solar panels to optimize energy output and how you can ensure your solar system is ...

How to Determine the Optimal Tilt Angle for Solar Panels: A Step ...

The case study 'Recommended Tilt and Azimuth Angles for Photovoltaic Systems' emphasizes a



global method for determining the optimal tilt angle for solar panels, which ...

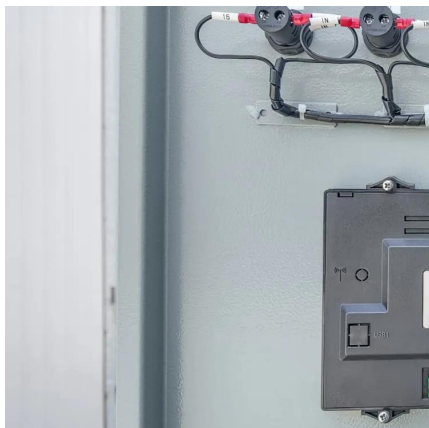


Solar Panel Angle: Definition, and How to Calculate

A solar panel angle calculator is a tool used to determine the ideal tilt angle for solar panels based on a range of factors such as location, time of ...

[Solar Angle Calculations: Maximize Your Panel ...](#)

Maximize Your Solar Panel Efficiency with the Right Angle Your photovoltaic system's efficiency hinges on the angle at which sunlight hits your ...



World estimates of PV optimal tilt angles and ratios of ...

This study provides estimates of photovoltaic (PV) panel optimal tilt angles for all countries worldwide. It then estimates the incident solar radiation normal to either tracked or ...



Optimal Solar Panel Angle: Maximizing Efficiency and Energy ...

Discover how to choose the right angle for your solar panels based on your location and seasonal variations. Proper orientation and tilt ensure maximum sunlight absorption, ...



Solar panel angle. How to calculate the angle of solar panel

Azimuth solar panel angle In basic terms, the azimuth solar panel angle, or "azimuth" for short, refers to the cardinal direction (in other words, "orientation") your ...

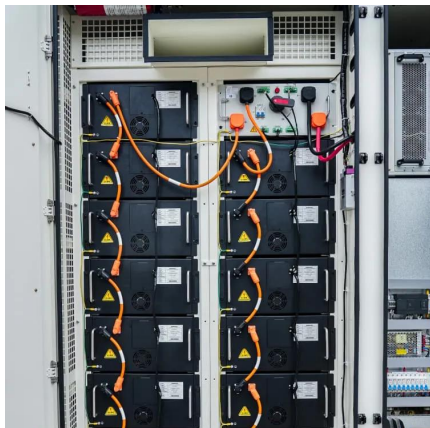
How to Determine the Optimal Solar Tilt Angle: A Step ...

Overview To determine the optimal solar tilt angle for photovoltaic panels, one must consider geographic location, seasonal changes, and ...



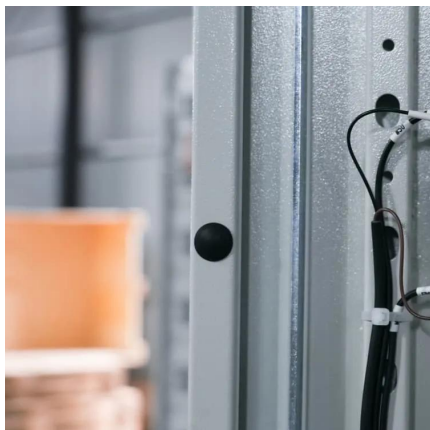
Optimal Solar Panel Angle: Maximizing Efficiency and ...

Discover how to choose the right angle for your solar panels based on your location and seasonal variations. Proper orientation and tilt ensure ...



Solar Panel Angle: Tilt, Azimuth, and Magnetic ...

Note: Most fixed-tilt solar PV systems feature a tilt angle between 20-30°. For instance, if your energy demands increase during winter due to ...



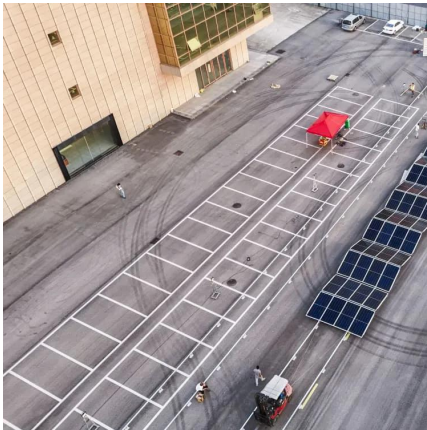
Solar Panel Angle Calculation: Your Ultimate How-To ...

Learn how to calculate solar panel angle for optimal energy. Discover factors, methods, and tools to maximize solar panel efficiency.

What's the Best Angle for Solar Panels to Get Maximum Output?

To enable this interaction, it's generally wise to point solar panels perpendicular to the sun's rays. However, unlike direction, tilt angle varies depending on the seasons. Even ...





Optimum Tilt of Solar Panels

Use one of these formulas to find the best angle from the horizontal at which the panel should be tilted: If your latitude is below 25°, use the latitude times 0.87. If your latitude ...

Optimum location and influence of tilt angle on performance of solar PV

With the growing demand of economically feasible, clean, and renewable energy, the use of solar photovoltaic (PV) systems is increasing. The PV panel performance to ...



Solar panel inclination angle and orientation

What is the best tilt angle for solar panels? The optimal tilt angle of photovoltaic solar panels is that the surface of the solar panel faces the Sun perpendicularly. However, the ...

What's the Best Angle for Solar Panels? , EnergySage

For maximum output, the sweet spot for solar panels in the continental U.S. is facing roughly south and tilted between 15 and 40 degrees, according to the Department of ...



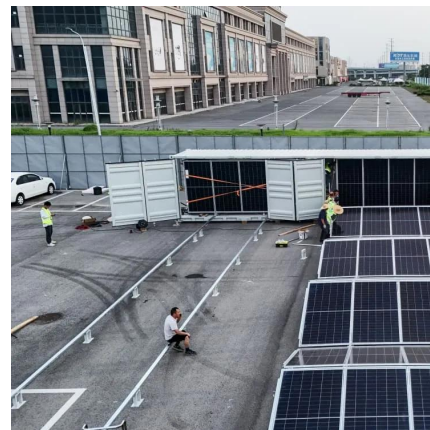
Solar Angle Secret: Are Your Panels Tilted Right?

Simple is the basic idea of controlling solar panel efficiency: panels generate the maximum power when sunlight strikes their surface perpendicularly, therefore forming a direct 90-degree angle. ...



What is the best angle for solar panels - Expert Tips

This guide breaks down the best angles, how they work with the sun's path, and practical tips to set up your panels smartly. What is the best angle for solar panels? The best ...



Solar Panel Tilt Angle Calculator

Discover the best angle for your solar panels with our Solar Panel Tilt Angle Calculator. Maximize energy efficiency and save money!





Solar panel inclination angle and orientation

Simple is the basic idea of controlling solar panel efficiency: panels generate the maximum power when sunlight strikes their surface perpendicularly, therefore ...



Solar Panel Angle: Definition, and How to Calculate

A solar panel angle calculator is a tool used to determine the ideal tilt angle for solar panels based on a range of factors such as location, time of year, and required energy ...

Dependence of spectral factor on angle of incidence for ...

The effect of angle of incidence on the absorption and conversion is studied for a monocrystalline silicon solar photovoltaic panel. The spectral factor is demonstrated to be ...



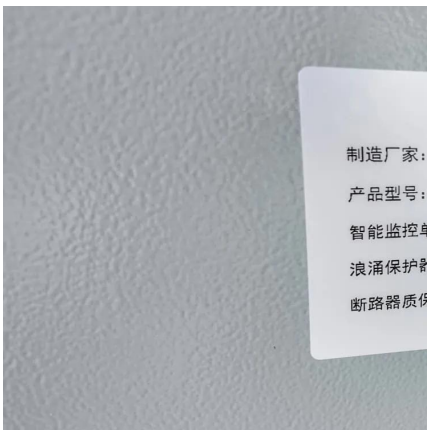
Solar Array Tilt Angle and Energy Output

Solar Array Tilt Angle and Energy Output The array's tilt is the angle in degrees from horizontal. A flat roof has a 0-degree tilt and a vertical wall mount has a 90-degree tilt angle. Whether you ...



How to calculate the best solar panel angle and ...

Azimuth determines the direction of incidence of sunlight and determines the lighting conditions of hillsides or buildings in different ...



Understanding PV system losses: solar panel tilt, ...

Looking to understand PV system losses in detail? Part 4 examines solar panel angle efficiency loss, exploring incidence angle, inverter ...

How to calculate the best solar panel angle and installation guide

Azimuth determines the direction of incidence of sunlight and determines the lighting conditions of hillsides or buildings in different orientations in all directions. The tilt angle ...





What's the Best Angle for Solar Panels? , EnergySage

Learn how the orientation and angle of your solar panels can affect just how much electricity they'll produce for you.

What's the Best Angle for Solar Panels? , EnergySage

For maximum output, the sweet spot for solar panels in the continental U.S. is facing roughly south and tilted between 15 and 40 degrees, ...



Contact Us

For catalog requests, pricing, or partnerships, please visit:
<https://talbert.co.za>