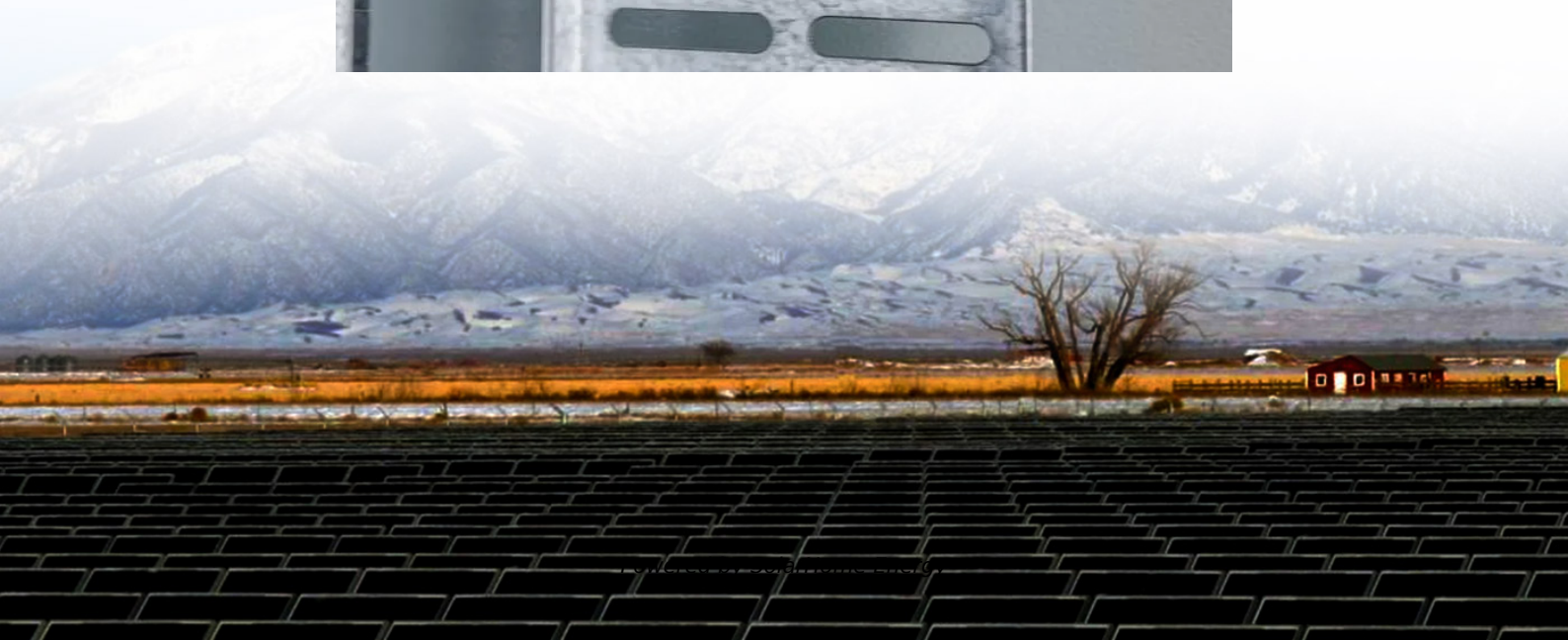


Photovoltaic panel roof distance





Overview

Leave enough space between panels and the roof edge for installation, maintenance, and safety, with a recommended minimum distance ranging from 6 inches to 2 feet. Ensure easy access for cleaning, inspections, and repairs by maintaining a safe distance from the roof edge.



Photovoltaic panel roof distance



How to Calculate Solar Panel Row Spacing for Maximum Efficiency

Calculate accurate solar panel row spacing with our easy-to-use tool. Avoid shading and optimize performance. Input tilt, azimuth, and panel dimensions. Try now!

CHAPTER 4 RS PHOTOVOLTAIC SYSTEMS

RS402.2 (R324.4) Rooftop-mounted photovoltaic systems. Rooftop-mounted photovoltaic panel systems installed on or above the roof covering shall be designed and installed in accordance ...



How Far Between Solar Panels Should be Away From?

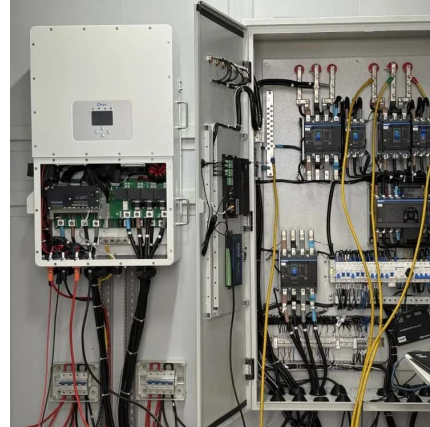
There should be 12 to 16 inches of space between the solar panel track between the first support and the end of the track. Too much space between the rails and the panels ...

How Far Between Solar Panels Should be Away ...

Installing solar panels on the roof is a challenge. There must be enough space on the roof, but you



also have to make sure there is enough ...

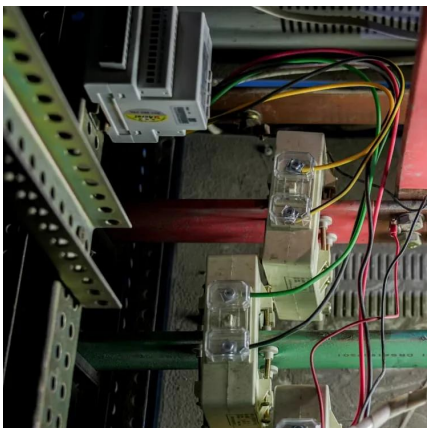


Structural Requirements for Solar Panels -- Exactus ...

Roof material: The type of roofing material can impact the installation process and the weight it can support. Common materials include ...

How close to the edge of your roof can your solar panels go?

How close to the edge of the roof should your solar panels go? In the past I've written about solar panel clamping zones which determine where, on a solar panel's edge, you ...



What is the Gap Between Two Solar Panels?

There should be something like 4 to 7 inches of space between each row of solar panels, as the casing contracts and extends with the climate. This will help to ensure optimal ...



Inter-Row Spacing in the Rooftop Solar Projects

Solar rooftop panels are mostly tilted based on their geographical location to achieve their most efficient performance. These tilted panels, in turn, cast shadows on the ...



Know your codes for solar mounting

PV mounting systems and devices: Devices and systems used for mounting PV modules that are also used to provide grounding of the module ...

This is a General Guide for Photovoltaic Plans Submittal

Provide the Fire Department set-backs/roof access pathway and point of access; access points cannot over a window or door. Typical access pathways are 18" from valleys, 3' from the ridge ...



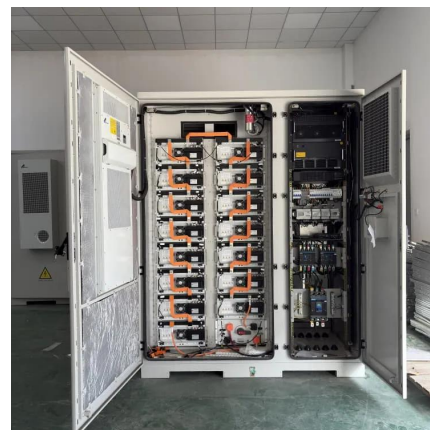
How Close Can Solar Panels Be to Edge of Roof

Leave enough space between panels and the roof edge for installation, maintenance, and safety, with a recommended minimum distance ranging from 6 inches to 2 ...



Solar Panels for Roofs

Solar Panels for Roofs Our solar panel calculator helps you determine how many solar panels can be installed on your roof and how much electricity they can generate. It calculates the ...



Guidelines for the operation and maintenance of rooftop solar

The Guidelines have been produced by members of Solar Energy UK's Rooftop O&M Working Group. They discuss issues which are relevant to maintaining the condition and efficiency of ...

Slope, pitch, gradient of a roof or solar panels (calculator and ...

Calculator and relationship between slope, pitch, gradient, rise, run length and tilted length of a roof or solar photovoltaic panels Free online calculator of the slope according ...



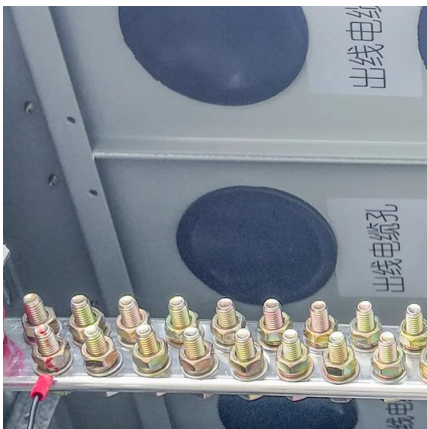


[How Far Can Solar Panels Be From The House?](#)

Roof-Mounted Solar Panels: In the case of roof-mounted solar panels, it's often recommended to place them as close to the house as ...

[How Much Space Should be between Solar Panels?](#)

The distance depends on several factors including the panels' expansion tolerance, clamp size, bracket type, roof and solar panel size. How the panels are being installed and where also ...



Fire Safety Guideline for Building Applied Photovoltaic

Summary Installing a PV system on the roof of a building introduces new fire risks to the building or damages to the system. First, the PV installations have been shown to increase the ...

[Solar Permitting Guidebook 4th Edition](#)

A roof plan showing roof layout, PV panels and the following fire safety items: approximate location of roof access point, location of code-compliant access pathways, PV ...



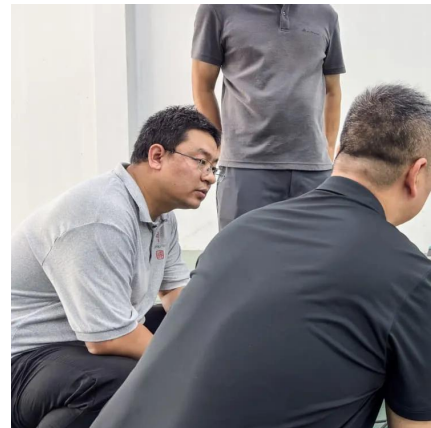
Roof Top Rail System

What is the best distance between the roof rack rails? In this video, he says you have to measure a distance between the holes in the solar panel, and use that distance in ...



How Far Between Solar Panels Should be Away ...

There should be 12 to 16 inches of space between the solar panel track between the first support and the end of the track. Too much space ...



What is the Gap Between Two Solar Panels?

There should be something like 4 to 7 inches of space between each row of solar panels, as the casing contracts and extends with the ...





How Far Can Solar Panels Be From The House?

Roof-Mounted Solar Panels: In the case of roof-mounted solar panels, it's often recommended to place them as close to the house as possible while ensuring they receive ...



Calculate distance between rows of photovoltaic panels

How to calculate the distance between rows of photovoltaic panels to prevent shadows? Data to Enter: Data obtained:

Shade Calculator

Knowing the minimum angle of incidence of sunlight during the year, it is possible to determine the distance between successive rows of photovoltaic panels. The figure below shows the ...



Determining Solar Row Spacing

Learn how to calculate solar panel row spacing for flat roofs and ground mounts. Understand key variables, formulas, and adjustments to optimize energy production and avoid ...



Determining Solar Row Spacing

Learn how to calculate solar panel row spacing for flat roofs and ground mounts. Understand key variables, formulas, and adjustments to ...



Calculation Methods for Array Spacing of Photovoltaic ...

When installing PV systems on pitched roofs, such as those made of color steel tiles or ceramic tiles, the installation method typically follows the ...

How to Calculate the Minimum Distance Between PV Panels?

Understand the importance of minimum installation distance for solar panels, calculation methods, and relevant regulations to ensure efficient operation and compliance of solar energy systems.





Inter-Row Spacing in the Rooftop Solar Projects

Solar rooftop panels are mostly tilted based on their geographical location to achieve their most efficient performance. These tilted panels, in ...

Contact Us

For catalog requests, pricing, or partnerships, please visit:
<https://talbert.co.za>