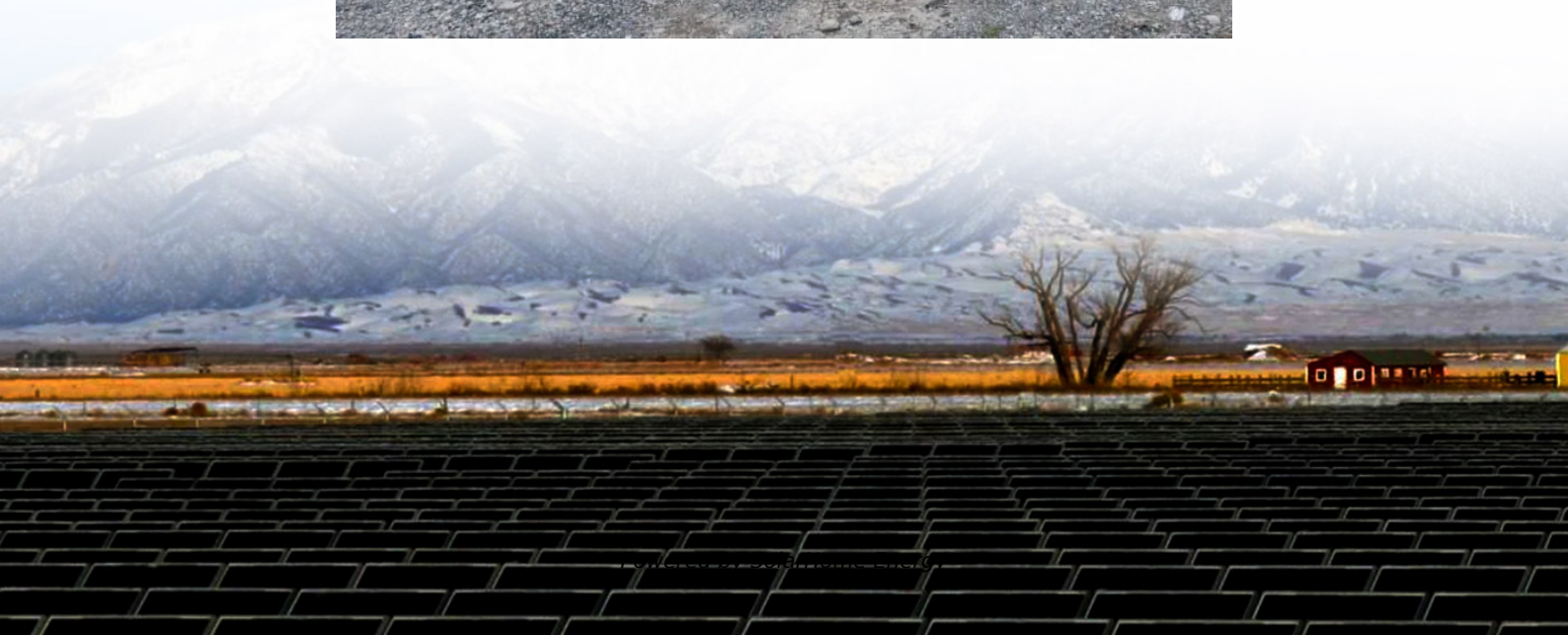


Photovoltaic inverter sleep time





Overview

Is the solar inverter working at night?

Even though the solar inverter is not working in the night, it has to keep the display LED lights ON, so you can easily know the status of the inverter. To keep the LED lights ON the solar inverter consumes a small fraction of electricity.

Which solar power inverter exemplifies the Q at night function?

One solar power inverter that exemplifies the benefits of the Q at Night function is Sungrow's 6.25/6.8 MVA MV Turnkey Station. Here's what makes this inverter system a standout choice for large-scale solar applications:.

What is a Q at night inverter?

The 6.25/6.8 MVA inverter is designed with the Q at Night function, allowing it to provide essential reactive power support when solar generation is offline. This capability not only contributes to grid stability but also offers potential financial benefits for operators.

Why is my SolarEdge inverter NOT working at night?

You can find the exact values for the inverter's night time power consumption in the SolarEdge technical datasheet. If your SolarEdge Inverter is stuck in night mode and not operational during times when it should be, this might be an indication of a problem on the DC side of the system.

What is night mode on SolarEdge inverters?

Night Mode is a feature on SolarEdge inverters that is designed to save energy and increase system safety. In this article, we'll explore how it works, how to troubleshoot it and some of the benefits of using it. What does night mode mean on SolarEdge inverters?

.



How does the SolarEdge inverter work?

The SolarEdge inverter uses an algorithm to check conditions and predict when night mode will occur. When it senses that night mode is imminent, it will begin to ramp down its power output slowly. This prevents the inverter from shutting down abruptly and protects your system from damage.



Photovoltaic inverter sleep time

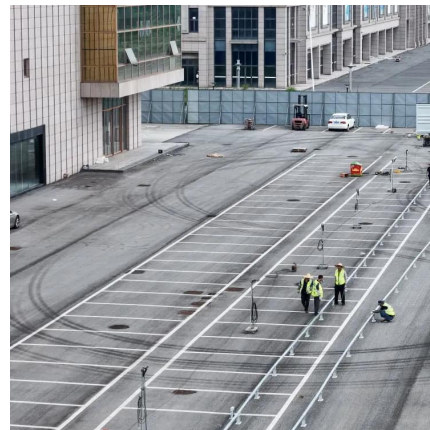


[SolarEdge Night Mode , What To Do When Stuck](#)

The SolarEdge inverter will shift into night mode or become inactive when it senses a lack of light. The common causes for this are night time, snowfall, ...

Grid-connected photovoltaic inverters: Grid codes, topologies and and

The proliferation of solar power plants has begun to have an impact on utility grid operation, stability, and security. As a result, several governments have developed additional ...



Solar pumping inverter user manual

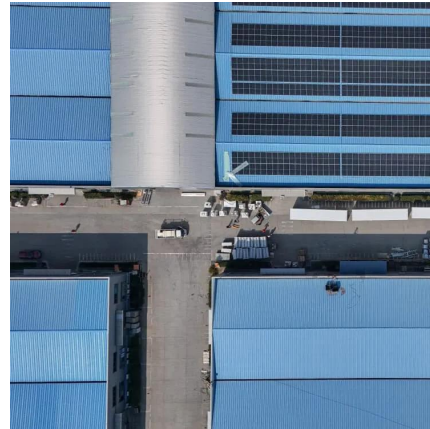
Chapter 5 Fault Diagnosis and Solution
VFD500-PV inverter has 24 types of warning information and protection function. In case of abnormal fault, the protection function will be invoked, the ...

EEVblog 1487 - Do Solar Micro Inverters Take Power ...

08:32 - So why is it drawing 1.1A at night time?
17:29 - DaveCAD: How does the Enphase



Microinverter work? 27:55 - How many microinverters ...



What is a photovoltaic inverter? Selection, Principles & Future ...

A photovoltaic inverter (PV Inverter), also known as a solar inverter, is a power electronic device. Its core function is to convert the direct current (DC) generated by solar ...

Inverter lifespan

A photovoltaic inverter like 2000w pure sine wave inverter or 3000w inverter, is an important component of any home solar power system, used to convert direct current (DC) ...



Solar Inverters_Energy Storage inverters

Inverter Video Center Download Center
Monitoring System PV Plant Design After-sale
Service Bankable, Reliable, Local Hybrid & Off-
grid Inverter Grid-tied PV Inverter Solution
Service and ...



An Introduction to Inverters for Photovoltaic (PV) ...

This article introduces the architecture and types of inverters used in photovoltaic applications.



What Happens to Solar Inverters at Night? Do They ...

Solar inverters don't exactly "shut down" during nighttime; instead, their operational status varies based on factors like energy production, grid ...

How does a solar inverter work? (Functions, types, and benefits)

Can you monitor photovoltaic inverter performance? Yes, most PV inverters include built-in monitoring systems that let you track system performance in real time. You can: ...



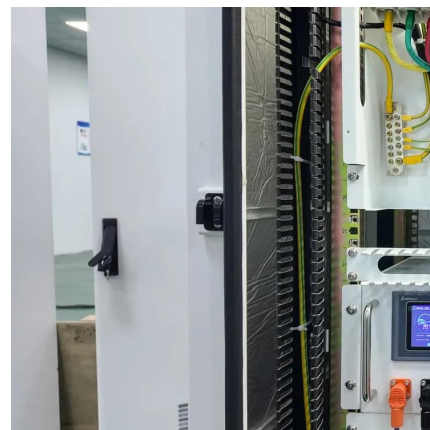
Does a Solar Inverter Work at Night? How to Power My Home 24/7?

Can solar inverters work at night? Discover how lithium batteries and inverters provide uninterrupted power, even after sunset.



Why Do Solar Inverters Have A Night Mode?

Solar inverters turn off at night when there is no sunlight to convert into electricity. Solar panels absorb sunlight during the day and convert it into direct current. When there is no ...



Understanding Solar Photovoltaic System Performance

This report presents a performance analysis of 75 solar photovoltaic (PV) systems installed at federal sites, conducted by the Federal Energy Management Program (FEMP) with support ...

Understanding the Q at Night Function in Solar Power Inverters

The Q at Night function allows solar power inverters to provide reactive power support even when solar generation is not occurring. This capability is particularly beneficial ...



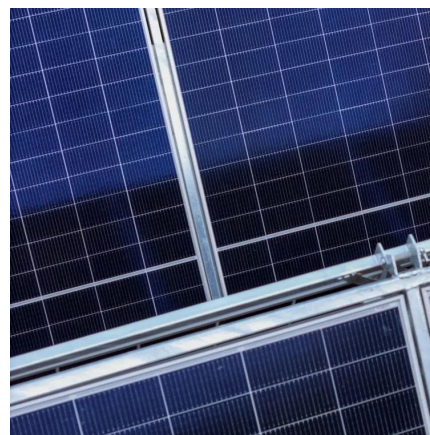


SolarEdge Night Mode , What To Do When Stuck , Skyline Solar

The SolarEdge inverter will shift into night mode or become inactive when it senses a lack of light. The common causes for this are night time, snowfall, and large objects blocking the sun. At ...

Does a Solar Inverter Work at Night? Here's the Real Answer

The short answer is no--solar inverters do not produce or convert energy at night because they rely on sunlight to generate electricity. Solar inverters are designed to convert ...



EEVblog 1487 - Do Solar Micro Inverters Take Power at Night?

08:32 - So why is it drawing 1.1A at night time?
17:29 - DaveCAD: How does the Enphase Microinverter work? 27:55 - How many microinverters can you have? 29:02 - What ...

[Solar inverter turn off at night + reasons](#)

Solar inverters do indeed turn off at night when there is no sunlight to convert into electricity. During the day, solar panels absorb the sunlight and, after that, convert it into direct ...



Solar inverter

Internal view of a solar inverter. Note the many large capacitors (blue cylinders), used to buffer the double line frequency ripple arising due to single-phase ac ...



What Happens to Solar Inverters at Night? Do They Shut Down?

Solar inverters don't exactly "shut down" during nighttime; instead, their operational status varies based on factors like energy production, grid connectivity, and system design. ...



Solar PV User Manual

The DC electricity is fed to the inverter which is normally in the utility or the loft of the building. The inverter converts the DC electricity to alternating current (AC) electricity which is compatible ...





How to Choose the Operating Mode of Solar Inverter?

Usually solar inverters have three working modes, PV (battery) priority, mains priority and ECO mode. So which working mode can maximize ...



Nighttime Reactive Power Support from Solar Inverters

However, most solar PV inverters in the field today go into sleep mode after sunset and do not provide any voltage regulation support during nighttime. IEEE 1547-2018 does not require the ...



Do Solar Inverters Turn Off At Night?

While solar inverters do not work at night due to the absence of sunlight, they react to the drop in power input and enter standby or sleep mode to conserve energy. The energy consumption of ...



Understanding the Q at Night Function in Solar Power ...

The Q at Night function allows solar power inverters to provide reactive power support even when solar generation is not occurring. This ...



Should I Leave My Inverter On All the Time?

Inverters are required to run AC appliances on solar power. From homes to RVs they are fixtures in PV systems. But is it safe to leave an inverter on all the time? Or should you turn it off every ...



Solar inverter turn off at night + reasons

Solar inverters do indeed turn off at night when there is no sunlight to convert into electricity. During the day, solar panels absorb the sunlight and, ...

Do Photovoltaic Inverters Consume Power When Idle?

Ever wondered if your solar system's photovoltaic inverter secretly sips electricity like a midnight fridge raider? The answer might surprise you. While these devices appear dormant when solar ...





PV Inverters

3 Frequency-Shift Power Control (FSPC) In off-grid operation, the Sunny Island inverters must be able to limit their output power, if PV inverters are connected on the AC side. This situation ...

Contact Us

For catalog requests, pricing, or partnerships, please visit:
<https://talbert.co.za>