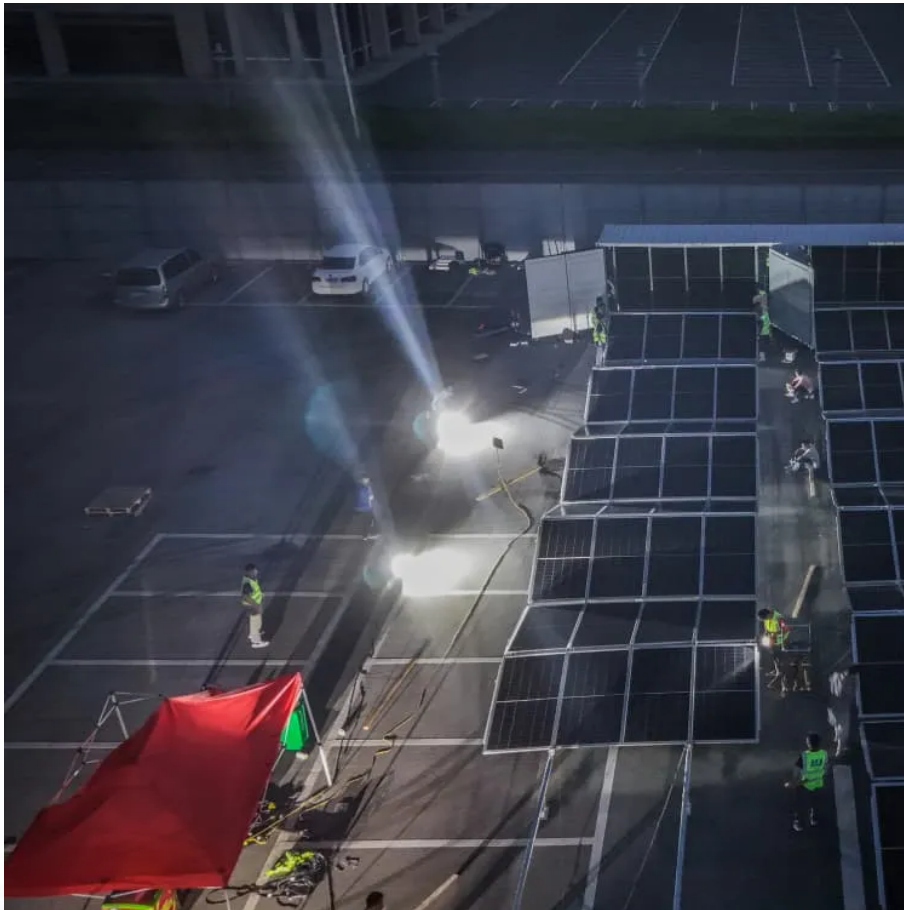


Outdoor power charging is getting slower and slower





Overview

Why is my EV charging so slow?

However, in the case of electric vehicles slow charging process creates frustration for EV drivers. Several factors matter when our charger charges vehicles too slowly, such as the type of charging station, the level of the charger, the charger's power output, and the speed of charging the vehicle.

Why is my battery charging so slow?

If it's a really hot day outside (or if you've been charging for a while, and your battery is getting hotter), your charging speeds will be slower. If it's freezing cold outside, your charging speeds will also be slower. These speeds are decided by your BMS, which controls the thermal management system for a fast but safe charge. 3.

Why is EV charging so difficult?

Another constraint in the path of EV charging is the EV charger compatibility issues. Issues like the type of charging ports, plugs of chargers, and the charging infrastructure are not compatible with each other. These compatibility issues can be solved by the creation of similar standard chargers and ports for each brand company charger and Cars.

What factors affect EV charging speed?

Every EV is different, but here are the five most common factors that affect charging speed: 1. How full your battery is when you start charging, which is called your State of Charge (SoC) Your State of Charge describes how full your battery is, in terms of percentage. Think of it like a fuel gauge.

How to prevent EV charging issues in cold weather?

Another tip to prevent EV Charging Issues In Cold Weather is to always have a plan for which route you are going to charge your vehicle and at what time intervals. However, in this cold temperature if you are stuck somewhere on



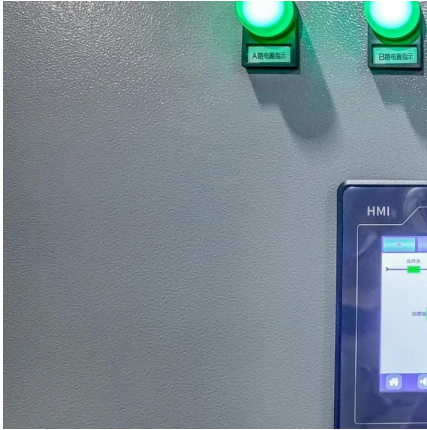
the highway then it would be a daunting task to reach any charging station.

How to solve EV charging problems?

Thus the issues with EV charging stations initially could be solved by installing the charging stations at the fuel stations. Another constraint in the path of EV charging is the EV charger compatibility issues. Issues like the type of charging ports, plugs of chargers, and the charging infrastructure are not compatible with each other.



Outdoor power charging is getting slower and slower

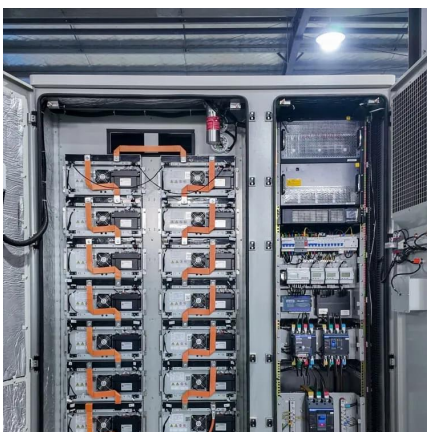


Why is My Phone Charging Slow? Uncovering the Reasons and ...

In conclusion, slow charging can be caused by a variety of factors, including faulty chargers, damaged charging cables, dirty charging ports, and software issues. By identifying ...

Understanding Slow Battery Charging: Causes and Quick Fixes

Slow charging can disrupt your daily routine and lead to unnecessary stress, whether it's your smartphone, laptop, or any other device powered by these batteries. ...



Charge station pro slowing down

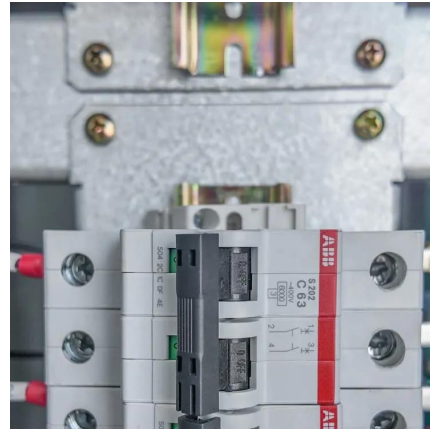
So, my Charge Station Pro has gradually started charging slower and slower over the last couple weeks. When first installed, it was running at ...

Why does my eBike get progressively weaker/slower as the

The other commenters are right about voltage drop causing your power issues. To quickly



answer why your partners bike doesn't behave in the same way, it is possible that that bike has a ...



My phone seems to be charging slower and slower every day. : r ...

I would first check the charging port on the phone, it's easy to get lint and gunk in there that can create poor connections. Then, if after that it doesn't improve, test another cable or brick. If it ...



Why Is My Samsung Phone Charging So Slowly?

Understanding the reasons behind the slow charging can empower you to take the necessary steps to fix the problem and enhance your device's ...



Solving the Issue of Slow Charging in Portable Power Stations

Understanding the underlying reasons for slow charging and implementing effective solutions is crucial for optimizing the usability and efficiency of portable power stations.





Why Is Wireless Charging So Slow? Learn the Truth Now

Uncover the reasons behind slow wireless charging and how it compares to wired methods. Get the insights you need, simply explained.

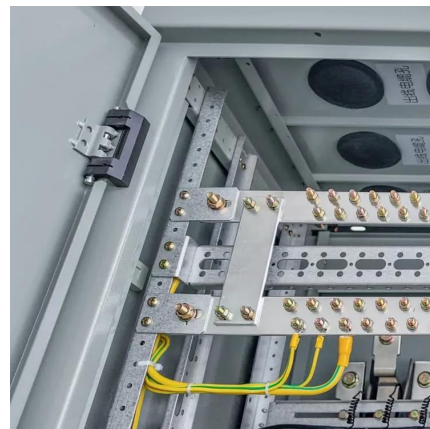


How to Diagnose Slow Solar Charging in Portable Kits

Yet, experiencing slow solar charging can be frustrating, limiting your energy independence. This guide will help you pinpoint the reasons behind sluggish charging and ...

5 Things That Affect Your Charging Speed

Yet, experiencing slow solar charging can be frustrating, limiting your energy independence. This guide will help you pinpoint the reasons behind sluggish charging and ...



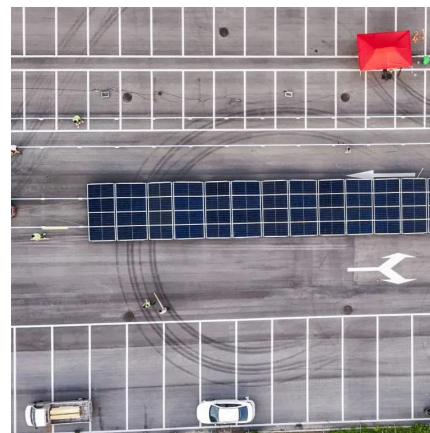
10 Common Problems with EV Chargers in 2025

Discover 10 common problems with EV chargers in 2025, their causes, and practical solutions. Contact Crosswyre Electric for expert EV charger ...



Why is Charging Through a Standard Outlet So Slow?

Discover why charging through a standard outlet can be slow and learn how to speed up the process with optimized strategies and advanced EV chargers.



[10 Common Problems with EV Chargers in 2025](#)

Discover 10 common problems with EV chargers in 2025, their causes, and practical solutions. Contact Crosswyre Electric for expert EV charger installation and support!

Slow vs Fast Chargers: Key Differences Explained - ...

Learn the critical differences between slow and fast chargers and why it impacts your device's charging efficiency.





5 Things That Affect Your Charging Speed

Still, EV batteries are influenced by the outside weather. If it's a really hot day outside (or if you've been charging for a while, and your battery is getting hotter), your ...

Get Rid of "PC Isn't Charging" and "Slow Charger" ...

This post shows you how to remove the "PC isn't charging" or the "Slow charger" notification. You can try these ways if you have this need.



Charge station pro slowing down

So, my Charge Station Pro has gradually started charging slower and slower over the last couple weeks. When first installed, it was running at 18 - 19kW and now doesn't want ...

Does the Temperature Outside Affect Charging Rate?

People mention slower charging when ambient temps are cold. They also slow down when it's hot. The charging process generates heat, and if the battery is already hot ...



13 Common EV Charging Issues Faced By EV Owners (2025)

Several factors matter when our charger charges vehicles too slowly, such as the type of charging station, the level of the charger, the charger's power output, and the speed of ...



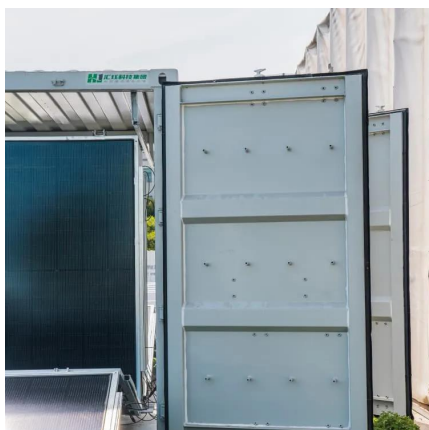
Charging Way Too Slowly? Diagnose and Speed Things Up

A slow-charging phone isn't just an inconvenience -- it could be a sign of deeper hardware or software issues. Thankfully, phone diagnostic software provides an easy and ...



Why Your Power Bank Is Charging Slowly (And How ...)

Is your power bank charging too slowly? Discover the top reasons why power banks take forever to charge and learn easy fixes to speed up the ...





5 Reasons Public DC Charging Is Slower Than Expected

Many DC chargers display a very high power rating (for example, 350kW), but that power is lower if another vehicle is charging nearby. Charging spots often share their power ...



[13 Common EV Charging Issues Faced By EV ...](#)

Several factors matter when our charger charges vehicles too slowly, such as the type of charging station, the level of the charger, the ...

[Laptop slow and lagging when charging \[Fix\]](#)

If your Windows Laptop is slow and lags when charging, switch to Balanced Power Settings, configure Maximum Processor State, etc.



12 Effective Fixes for Android 15 Slow Charging or ...

Once your device reboots, plug it in and check if the charging speed improves. Ensure the charging cable is securely connected to the ...



Why Your Windows Laptop Is Slow (and How to Fix It)

Here are the most common reasons your Windows 10 laptop is acting slow and the steps you can take to fix your laptop, so you can get it to ...



Slow vs. Fast Charging: Pros, Cons, and Insights

Fast charging offers convenience, but at what cost to your smartphone's battery? Weigh the pros and cons against slow charging methods.

Does the Temperature Outside Affect Charging Rate?

People mention slower charging when ambient temps are cold. They also slow down when it's hot. The charging process generates heat, and if the battery is already hot because of high ...





Fast vs. Slow EV Charging: Which One Is Right for You?

In the debate of fast charging vs slow charging, user requirements are the differentiating factor regarding which charging technology becomes suitable. For example, for a two-wheeler EV ...

Understanding Slow Battery Charging: Causes and ...

Slow charging can disrupt your daily routine and lead to unnecessary stress, whether it's your smartphone, laptop, or any other device ...



Contact Us

For catalog requests, pricing, or partnerships, please visit:
<https://talbert.co.za>