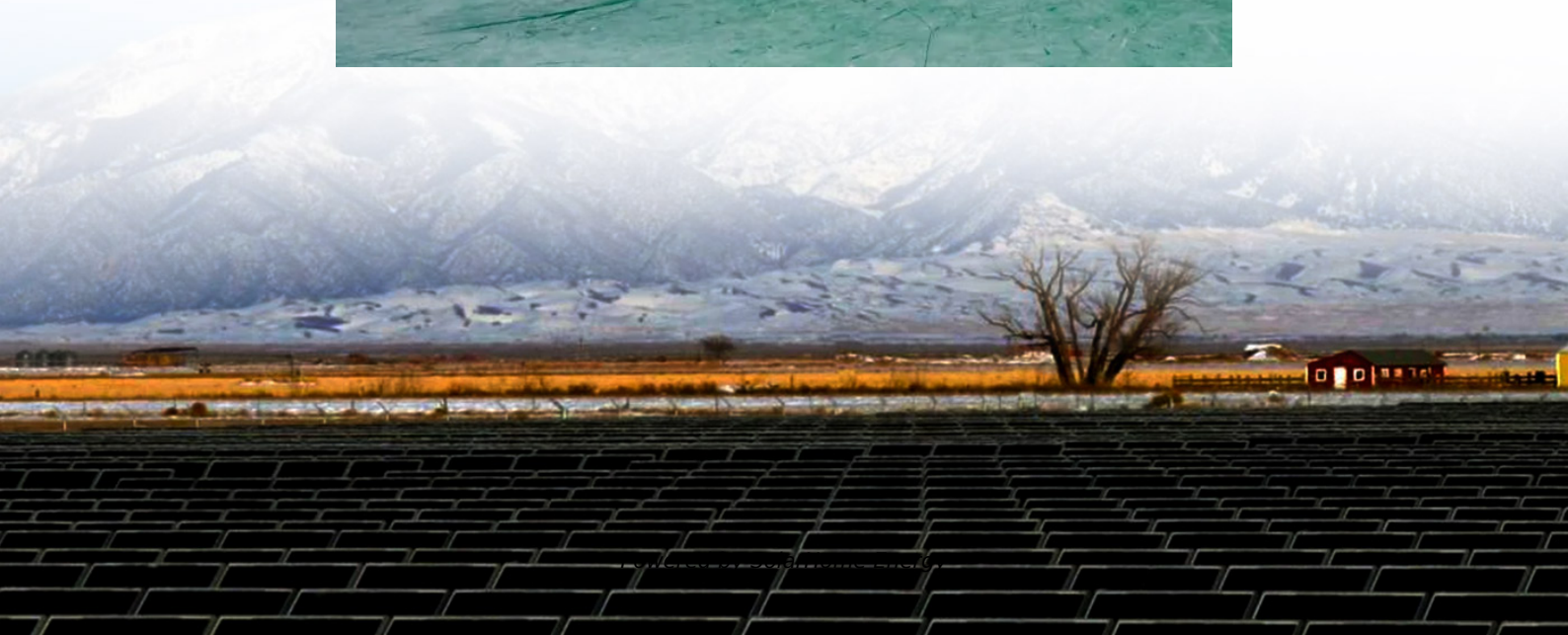


New Energy Storage Prefabricated Warehouse





Overview

Are steel warehouse buildings built to last?

Our steel warehouse buildings are built to last, offering superior strength, durability, and cost-effectiveness. Whether you need a large-scale storage facility, manufacturing space, or distribution center, we deliver prefabricated warehouse buildings that are fully customizable and engineered for long-term performance.

What is a prefabricated warehouse?

Ideal for industries such as manufacturing, logistics, aviation (as hangars), and more, prefabricated warehouses offer flexibility that aligns with modern business needs. Their lightweight construction requires minimal foundations, making them easy to install, dismantle, or expand as requirements change.

What are the technical specifications of a prefabricated steel warehouse?

Below are the key technical specifications of our prefabricated steel warehouses: Module-T manufactures and supplies buildings in sizes and heights tailored to your requirements. The frame of a portable warehouse is composed of horizontal and vertical high galvanized bolted steel.

Why is a prefabricated warehouse a good choice?

Their lightweight construction requires minimal foundations, making them easy to install, dismantle, or expand as requirements change. This adaptability, combined with reduced construction times and labor costs, makes prefabricated warehouses an economical and practical choice. Why Module-T Prefabricated Warehouse?

.

How long does it take to assemble a prefabricated steel warehouse?

Depending on the size of the warehouse, the assembly may require a forklift



or crane to position the prefabricated sections, with connection kits and lifting hooks provided for ease of construction. Typically, just a few laborers can assemble a prefabricated steel warehouse in hours or days, depending on its complexity.

What is a modular warehouse?

Module-T manufactures and supplies buildings in sizes and heights tailored to your requirements. The frame of a portable warehouse is composed of horizontal and vertical high galvanized bolted steel. The walls of a modular warehouse are made from either sheet steel or sandwich panels and rock wool or glass fibre insulation.



New Energy Storage Prefabricated Warehouse



Prefab Warehouse Steel Buildings: Customizable Storage ...

1 day ago · In conclusion, Lida Group 's prefab warehouse steel buildings represent the future of storage facility construction. By combining advanced engineering, precision manufacturing, ...

Warehouse

With our construction experience in the commercial and industrial sectors, our factory in Klerksoord is equipped with the latest machinery and an ...



Prefabricated Steel Structures: Powering the Future ...

Dorce's modular prefab steel structures offer numerous benefits, including quick construction, portability, durability, and customizable designs. These ...

Prefabricated Energy Storage Cabins: Revolutionizing Power

As global renewable capacity surges 67% since 2020 (IRENA 2023), prefabricated energy storage



cabins emerge as the missing puzzle piece. But can these modular solutions truly ...



Prefabricated Steel Structures: Powering the Future with Energy Storage

Dorce's modular prefab steel structures offer numerous benefits, including quick construction, portability, durability, and customizable designs. These structures can greatly improve the ...



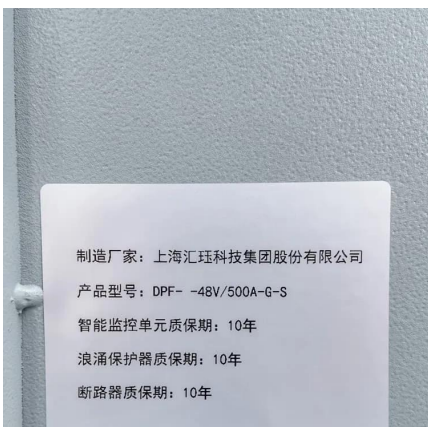
Battery Energy Storage Systems (BESS) . BMarko

BESS, or Battery Energy Storage Systems, are systems that store energy in batteries for later use. These systems consist of a battery bank, power conversion equipment, and control ...



PREFAB WAREHOUSE AND PRE ENGINEERED BUILDINGS

Whether you're looking to expand your storage capacity or build a new industrial facility, investing in prefab and pre-engineered buildings ensures you get a reliable, cost-effective solution that ...





Modular Warehouses (Buyer's Guide + Price Comparison)

A modular warehouse is a type of prefab warehouse in that it's pre-built. But not all prefab warehouses are modular because they aren't always self-contained.



Why Prefabricated Warehouses Are the Future of Industrial Storage

At Mount PEB, we focus on creating and delivering top-quality prefabricated warehouses customized to fulfill your storage and industrial requirements. Our PEB solutions ...

Metal Warehouse Building -- Prefabricated Warehouse Buildings

Whether you need a large-scale storage facility, manufacturing space, or distribution center, we deliver prefabricated warehouse buildings that are fully customizable and engineered for long ...



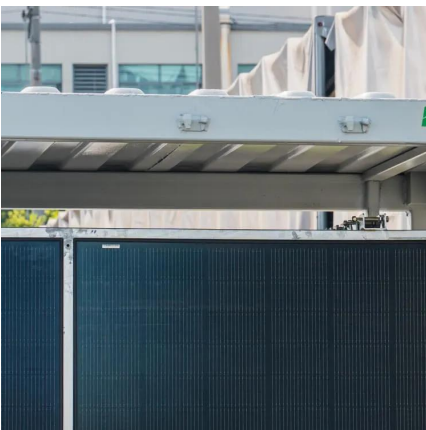
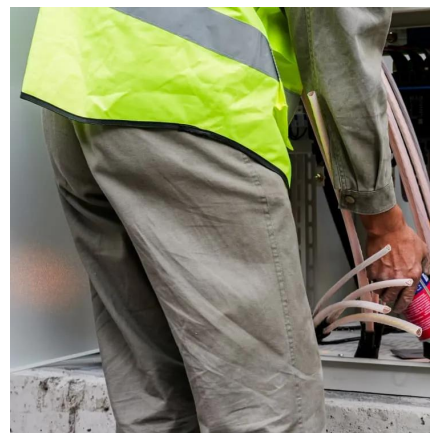
Prefab warehouse buildings: the future of efficient ...

Whether you need a small storage facility or a large-scale distribution center, prefab warehouse buildings can be tailored to your exact ...



Customized Metal Buildings for Warehouses and ...

The modular nature of steel buildings makes planning for future growth not just possible--but easy and cost-effective. Expansion bays, pre ...



Prefabricated energy storage battery warehouse system ...

The large-capacity energy storage battery and the supporting battery cluster control unit, power distribution, fire. Phone: +86-18806176058. login User Registration NEWS Our company ...

Energy-Storage.News

Energy-Storage.news Premium speaks with Ryan Hledik, Principal at the Brattle Group, and Lauren Nevitt, Senior Director of Public Policy at Sunrun, on the ...





Prefabricated Steel Warehouse

Learn how prefabricated steel warehouses streamline the construction process, saving time and reducing labor costs. Discover the exceptional strength and ...

[Role of Prefabricated Warehouses in Modern ...](#)

Prefabricated warehouses play a key role in modern business storage solutions, offering cost-efficiency, flexibility, and sustainability. Explore ...



Prefab warehouse buildings: the future of efficient storage ...

Whether you need a small storage facility or a large-scale distribution center, prefab warehouse buildings can be tailored to your exact specifications. From size and layout ...

Prefabricated Warehouses: The Future of Industrial Storage

Prefabricated warehouses are a smart investment for businesses seeking efficient, cost-effective, and scalable storage solutions. With their modular design and rapid assembly, ...



Prefab Warehouse Buildings , Commercial Storage ...

Durable, high-quality metal warehouses by SteelMaster provide the perfect storage or production space solution for businesses and property owners.



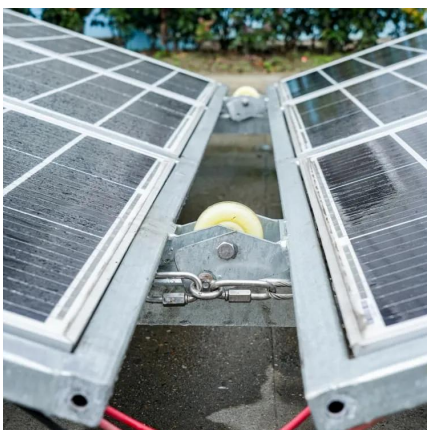
Prefabricated Steel Structure Warehouse-4 Key ...

Prefabricated steel structure warehouses have redefined the landscape of industrial storage architecture by employing steel as the principal load-bearing ...



Grid-Interactive Efficient Buildings by Modular Design of Plug ...

End vision: A new affordable modular plug-and-play HVAC product ecosystem Demonstrate proof-of-concept hardware, potentially using commercially available DC electrical distribution ...





Metal Warehouses

Metal Warehouses Do you need a resilient, durable, and robust building to meet your warehousing and storage requirements? Metal warehouse buildings are the ideal choice for ...



Why Prefabricated Warehouses Are the Future of ...

At Mount PEB, we focus on creating and delivering top-quality prefabricated warehouses customized to fulfill your storage and industrial ...

Prefabricated & Portable Warehouses for Sale , Module-T

Prefabricated warehouses are innovative, modular steel structures designed to meet the growing demand for efficient, cost-effective, versatile storage and operational spaces.



Prefabricated Steel Warehouse

Learn how prefabricated steel warehouses streamline the construction process, saving time and reducing labor costs. Discover the exceptional strength and resilience of steel structures, ...



Metal Warehouse Building -- Prefabricated ...

Whether you need a large-scale storage facility, manufacturing space, or distribution center, we deliver prefabricated warehouse buildings that are fully ...



Everything You Need To Know About Prefab Warehouses

A prefab warehouse can accommodate their changeable inventory needs by providing a scalable space that can go from storage to distribution in no time. With ...

Prefabricated Steel Buildings: Advantages and Applications in

In the world of industrial construction, prefabricated steel buildings are becoming an increasingly popular choice. They offer a wide range of benefits, including cost savings, ...





Sale prefabricated new warehouse

Warehouses - new and used We are offering new warehouses with prefabricated structures and insulated panels in various sizes. Occasionally, used ...

Prefabricated & Portable Warehouses for Sale

Prefabricated warehouses are innovative, modular steel structures designed to meet the growing demand for efficient, cost-effective, versatile ...



Role of Prefabricated Warehouses in Modern Business Storage ...

Prefabricated warehouses play a key role in modern business storage solutions, offering cost-efficiency, flexibility, and sustainability. Explore how Pressmach's innovative ...

Contact Us

For catalog requests, pricing, or partnerships, please visit:
<https://talbert.co.za>