

# **Lithium battery pack is a single cell charging**





## Lithium battery pack is a single cell charging

---

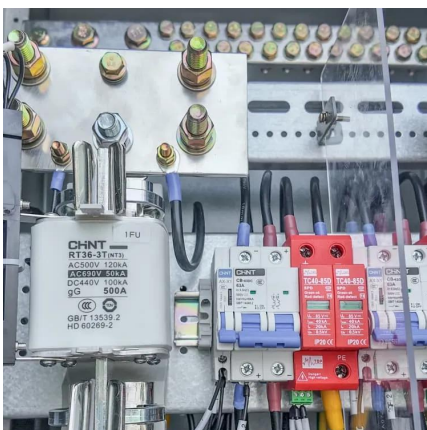


### Understanding Charge-Discharge Curves of Li-ion Cells

Hence, a CC-CV charger is highly recommended for Lithium-ion batteries. The CC-CV method starts with constant charging while the battery pack's voltage rises. When the ...

### Optimal Lithium Battery Charging: A Definitive Guide

Unlock the secrets of charging lithium battery packs correctly for optimal performance and longevity. Expert tips and techniques revealed in our comprehensive guide.



### What Is A Lithium-Ion Battery Cell, Module, and Pack , Grepow

A lithium-ion battery pack is the largest and most complex assembly in the hierarchy of battery systems. It consists of multiple modules arranged in a specific ...

### Battery Charging

Slow Charge Slow charge is usually defined as a charging current that can be applied to the battery indefinitely without damaging the cell



(this method is sometimes referred to as a trickle ...



## Battery Packs Explained: How They Work, Usage, and a ...

Battery packs are portable power sources that store electrical energy for later use. They typically consist of multiple battery cells grouped together, allowing them to deliver a ...

### 1 Series Cell Chargers

Single series cell applications for battery charger ICs are the most prevalent in the world. This is because the total system cost is low (no cell-balancing needed) and the available power in a ...



## How to equalization charge Lithium ion battery ...

When the lithium-ion battery pack is produced and stored for a long time, due to the difference in static power consumption of each circuit of ...





## All You Need to Know About Li-ion Batteries

Li-ion Battery Pack (cells in series and parallel)  
To power small portable electronics or small devices a single 18650 cell or at most a pair of ...



## **Charge a Battery One Cell at a Time: DIY Tips for Individual Cell**

Yes, you can charge a battery one cell at a time, and it is generally safe. Charging cells individually ensures better battery maintenance and balanced charge levels. Always ...

## Lithium Cell Charging & Battery Management

Charging lithium batteries or cells is (theoretically) simple, but can be fraught with difficulties as has been shown by the multiple serious failures in commercial products. These range from ...



## **Cell Capacity and Pack Size**

Obviously Cell Capacity and Pack Size are linked. The total energy content in a battery pack in it's simplest terms is  $S \times P \times Ah \times V_{nom}$ .



### How to Charge Li-Ion Battery Correctly

When a cell overheats, the controller would stop the charging until the temperature settles down. ICs for charging Lithium-Ion batteries Figure 2 ...



### Introduction: What Is a Lithium-Ion Battery Pack?

Lithium-ion battery packs are essential power sources used in medical equipment, drones, robots, and countless other devices. These packs are made of multiple Li-ion cells ...

### **What Is A Lithium-Ion Battery Cell, Module, and Pack**

A lithium-ion battery pack is the largest and most complex assembly in the hierarchy of battery systems. It consists of multiple modules ...





## 2001-01-0959.PDF

Since battery pack charging is limited by any one single cell reaching its end-of-charge voltage (4.1 V to 4.3 V), it is useful to control high voltage cells until the lower voltage cells catch up.

## [How To Balance A Lithium Batteries and Cells](#)

A balanced battery pack is critical to getting the most capacity out of your pack, read along to learn how to top and bottom balance a lithium battery ...



## Battery Cells vs. Modules vs. Packs: How to Tell the Difference

Learn the differences between battery cells, modules, and packs. See how each layer works, why BMS and thermal systems matter, and where these components fit in EVs and energy storage.

## [The Right Way to Charge Your Lithium Battery Pack](#)

Most of the lithium-ion battery manufacturer set a 4.2V charge voltage, use this as the optimal balance between capacity and cycle life. 4.2V as constant ...



## Understanding Li-Ion Battery Packs: A Complete Guide

Essentially, it's a set of lithium-ion cells working together to provide a stable power source. Each cell is like a tiny powerhouse, storing and releasing energy as needed. When ...



## Correct charging method of lithium iron phosphate battery

The full name of LiFePO<sub>4</sub> Battery is lithium iron phosphate lithium ion battery. Because its performance is particularly suitable for power applications, the word "power" is ...



## How to Charge a Li-Ion Battery Correctly and Safely

In "1C", "C" refers to the AH or the mAH value of the battery, meaning if the Li-ion cell is rated at 2600mAH then the "C" value becomes 2600, or 2.6 Amps, which implies that it ...

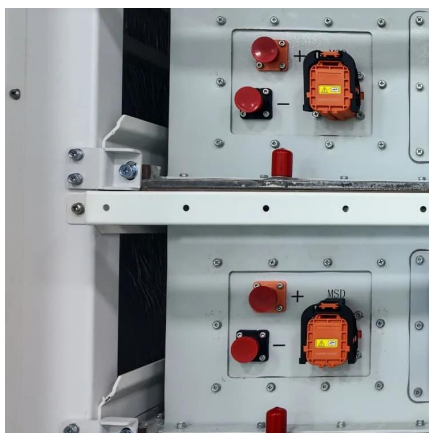






## 48V Battery, 48V Lithium Ion Battery Pack , Large Power

The lithium ion battery PCM can play the role of charging and discharging protection for the series and parallel connection battery packs, and can detect the overvoltage, overcurrent, over ...



## [Charging Multi-Cell Lithium-Ion Battery Packs](#)

Fig. 1 is identical to charging a single Li-Ion cell other than setting a different charge voltage. With two cells in series and both being charged at 4.2V, the ...

## Optimal Lithium Battery Charging: A Definitive Guide

Unlock the secrets of charging lithium battery packs correctly for optimal performance and longevity. Expert tips and techniques revealed in our ...



## Battery Cell, Module, or Pack: What's the difference?

It's a group of connected battery cells, boosting voltage and capacity. It's the middleman between single cells and the entire battery pack.





## Understanding Charge-Discharge Curves of Li-ion Cells

Hence, a CC-CV charger is highly recommended for Lithium-ion batteries. The CC-CV method starts with constant charging while the battery ...

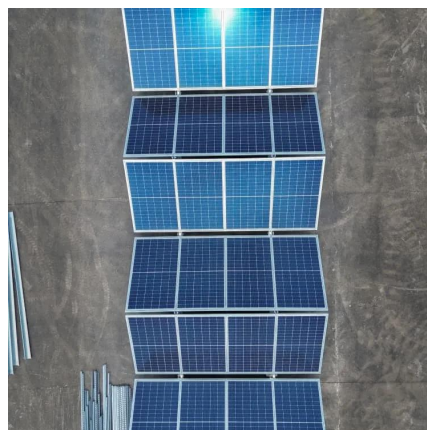


## [The Right Way to Charge Your Lithium Battery Pack](#)

Most of the lithium-ion battery manufacturer set a 4.2V charge voltage, use this as the optimal balance between capacity and cycle life. 4.2V as constant charging voltage, the battery ...

## How to Charge a Li-Ion Battery Correctly and Safely

In "1C", "C" refers to the AH or the mAH value of the battery, meaning if the Li-ion cell is rated at 2600mAh then the "C" value becomes ...





## **What is Battery Cell, Battery Module, and Battery Pack?**

It is important to understand the difference between a battery cell, battery module and battery pack if you work in industries such as electric ...

## **Contact Us**

---

For catalog requests, pricing, or partnerships, please visit:  
<https://talbert.co.za>