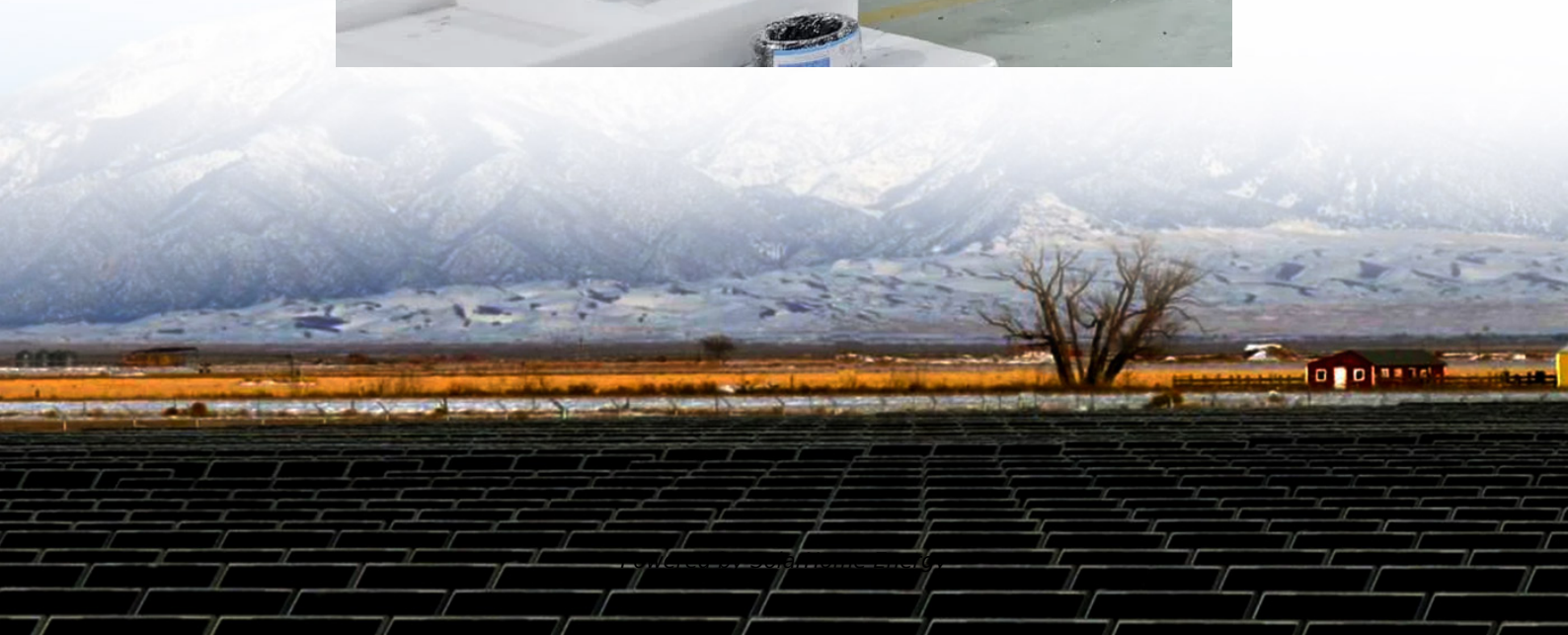


Lithium battery BMS charging method





Lithium battery BMS charging method



Comprehensive review of battery management systems for ...

Research into lithium-ion battery technologies for Electric Vehicles (EVs) is advancing rapidly to support decarbonization and mitigate climate change. A critical aspect in ensuring the ...

How does a Lithium Bms System adapt to different charging methods?

2 days ago· Conclusion and Call to Action In conclusion, the ability of our Lithium BMS systems to adapt to different charging methods is a key feature that sets us apart in the market. Our ...



How Does A BMS Balance A Lithium Battery?

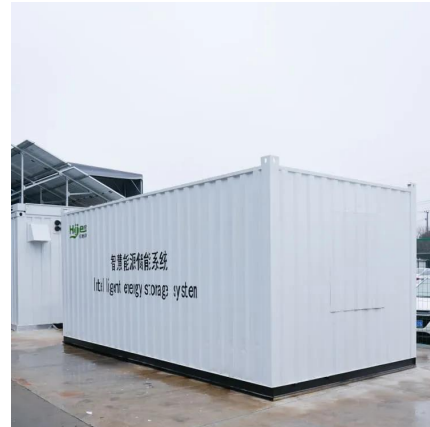
Importance of Cell Balancing There are many reasons the cells in a lithium-ion battery need to be balanced. If a cell group is lower than the others, the BMS will put the ...

How does a BMS work

Understanding how does a BMS works is essential for maximizing the performance and safety of battery systems. A Battery



Management ...



[How Does A Battery Management System Work?](#)

Dive deep into the intricate workings of Battery Management Systems (BMS). Learn how advanced monitoring, protection mechanisms, ...

[Learn About Li-Ion Battery Fast Charging and BMS](#)

Lithium batteries' fast charging technology and battery management system (BMS) are currently important research directions in electric vehicles and portable devices. Fast ...



Battery Management Systems-Part 3: Battery Charging Methods

Developing a proper battery charging method is an essential part of the BMS. The method is based on accurate battery estimations for state of charge (SOC), state of health ...



[Lithium battery charging best practices](#) [\(How to](#)

Charging a Lithium battery is very different from charging a Lead-Acid battery. The most crucial difference is that a Lithium battery charges at a lower voltage ...



How does a BMS work

Understanding how does a BMS works is essential for maximizing the performance and safety of battery systems. A Battery Management System (BMS) is pivotal in managing ...

[Can BMS Charging and Discharging](#) [Simultaneously?](#)

In this article, we have shown you several BMS charging methods, discussed the possibility of simultaneous BMS charge and discharge, and ...



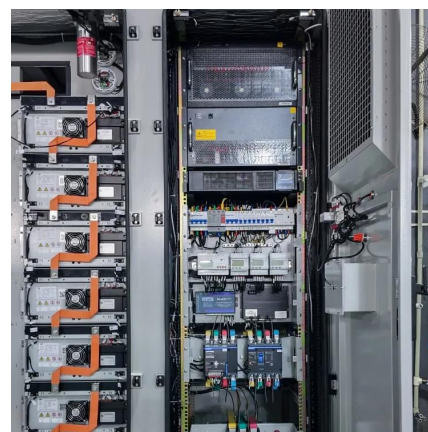
What Is a Battery Management System? A Complete ...

What is a Battery Management System (BMS) and why is it essential for lithium batteries? Discover how BMS improves safety, performance, and lifespan in ...



Battery Management System (BMS) Detailed Explanation: ...

Battery Management System (BMS) is the "intelligent manager" of modern battery packs, widely used in fields such as electric vehicles, energy storage stations, and consumer ...



Preferred method to charge Smart Battery if BMS reports Battery ...

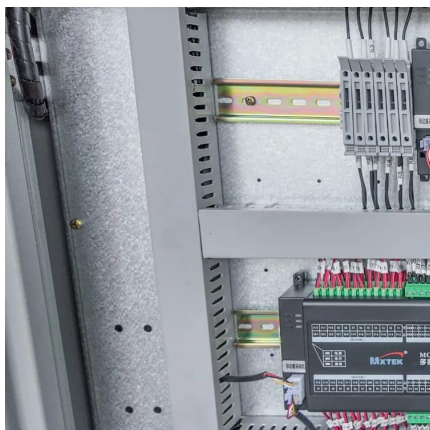
This topic was automatically closed 14 days after the last reply. New replies are no longer allowed.
Topic Replies Views Activity Cutoff Voltage to Trickle Charge LFP Battery DIY ...



Charge/discharge characteristics of lithium-ion batteries, battery

Lithium-ion batteries have transformed the energy storage landscape, powering everything from smartphones to electric vehicles. Understanding their charge and discharge ...





Do I Need a BMS for Lithium-Ion Batteries? Benefits and ...

A Battery Management System (BMS) is crucial for lithium-ion batteries. It ensures safe operation by preventing overcharging and excessive discharging. The BMS provides ...

How to Charge 18650 Battery Pack with BMS? 5 Easy ...

Charge safely, maximize lifespan, and avoid costly mistakes with this step-by-step playbook. Let's cut through the noise. If you're building DIY ...



Can BMS Charging and Discharging Simultaneously?

In this article, we have shown you several BMS charging methods, discussed the possibility of simultaneous BMS charge and discharge, and even compiled all the FAQs on ...

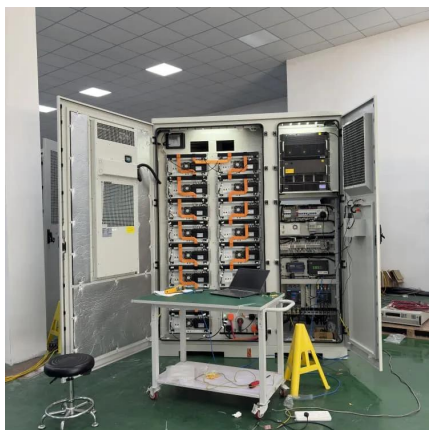
Do I Need a BMS for Lithium-Ion Batteries? Benefits and ...

Without a BMS, lithium-ion batteries can overcharge or over-discharge. This condition can lead to battery damage or even fires. A BMS optimizes the charging process, ...



Design and implementation of a battery management system with ...

A BMS is the brain of a battery pack that monitors pack current, voltage, temperatures, and determines available energy, SOC and state of power (SOP), so as to keep ...



How does a Lithium Bms System adapt to different charging ...

2 days ago · Conclusion and Call to Action In conclusion, the ability of our Lithium BMS systems to adapt to different charging methods is a key feature that sets us apart in the market. Our ...



[Battery Management Systems-Part 3: Battery ...](#)

Developing a proper battery charging method is an essential part of the BMS. The method is based on accurate battery estimations for state of ...





[BMS and lithium battery balancing: What is it?](#)

The key function of a lithium battery BMS is cell balancing. What is a conventional BMS and how is the Flash Balancing System different?



[Lithium Series, Parallel and Series and Parallel](#)

Lithium Series, Parallel and Series and Parallel Connections Introduction Lithium battery banks using batteries with built-in Battery Management Systems (BMS) are created by connecting ...

Lithium battery charging best practices (How to & other tips)

Charging a Lithium battery is very different from charging a Lead-Acid battery. The most crucial difference is that a Lithium battery charges at a lower voltage than required to charge a Lead ...



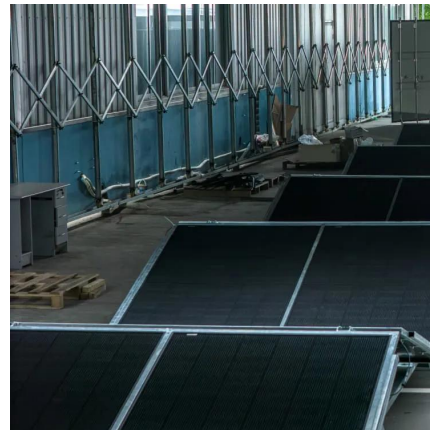
[Learn About Li-Ion Battery Fast Charging and BMS](#)

Lithium batteries' fast charging technology and battery management system (BMS) are currently important research directions in ...



[How To Hook up and Install A BMS To Battery](#)

The BMS is a critical component of any lithium battery. Learning how to attach a BMS to a battery is a critical step in building lithium-ion ...



How to Charge 18650 Battery Pack with BMS? 5 Easy Steps Guide

Charge safely, maximize lifespan, and avoid costly mistakes with this step-by-step playbook. Let's cut through the noise. If you're building DIY power banks, drones, or solar ...

BMS Insights: Key to Lithium Battery Safety & Efficiency , NAZ ...

Discover how BMS enhances lithium battery safety & efficiency. Learn the key differences between MOSFET and contactor-based systems for better performance.





Understanding Battery Management Systems (BMS) in Lithium ...

Learn how a Battery Management System (BMS) protects lithium batteries by controlling charging and discharging. Understand BMS logic, key safety features, and real-world examples with ...

Battery management system

A battery management system (BMS) is any electronic system that manages a rechargeable battery (cell or battery pack) by facilitating the safe usage and a long life of the battery in ...



Contact Us

For catalog requests, pricing, or partnerships, please visit:
<https://talbert.co.za>