

# **Is it normal for a lithium battery pack to be fully charged at 12 2V**





## Overview

---

What is the fully charged voltage for a 12V lithium ion battery?

Part 2. What is the fully charged voltage for a 12V lithium-ion battery?

Depending on the specific battery chemistry, a fully charged 12V lithium-ion battery typically reads between 12.6V and 13.6V. This voltage range is narrower and more stable than other battery types, such as lead-acid batteries.

Why is my 12V lithium ion battery only charging to 12.8V?

Depending on its chemistry, a fully charged 12V lithium-ion battery typically reads between 13.2V and 13.6V. Why is my 12V lithium-ion battery only charging to 12.8V?

This could be due to a faulty charger, a BMS limitation, or the battery's age. Check your charger and ensure it's compatible with lithium-ion batteries.

What voltage does a lithium ion battery have?

Lithium Iron Phosphate (LiFePO<sub>4</sub>) batteries, a popular lithium-ion battery, usually have a fully charged voltage between 13.2V and 13.6V. Other lithium-ion chemistries, such as lithium cobalt oxide (LiCoO<sub>2</sub>), generally have a fully charged voltage closer to 12.6V to 13.4V. It's important to note that the battery's voltage drops as it discharges.

Does the voltage of a lithium-ion battery indicate its charge state?

It's a common belief that the voltage of a lithium-ion battery can accurately indicate its charge state. However, this is only partially true. The lithium-ion battery's voltage increases as it charges, but the relationship is not linear. It can vary based on several factors, including the battery's age and temperature.

Do 12V lithium-ion batteries have a voltage difference?



However, many users who rely on 12V lithium-ion batteries often notice discrepancies in voltage readings, especially when the battery doesn't seem to reach a "full charge." This can lead to confusion or concerns, mainly because the behavior of lithium-ion batteries differs from traditional battery types like lead-acid.

How do I choose a lithium-ion battery pack?

When selecting a lithium-ion battery pack, understanding its voltage characteristics is crucial for ensuring optimal performance and longevity. Three key voltage terms define a battery's operation: Nominal Voltage, Charged Voltage, and Cut-Off Voltage.



## Is it normal for a lithium battery pack to be fully charged at 12 2V

---



### A guide to lithium battery full charge voltage mechanics

A 12-volt lithium-ion battery that has been completely charged should show between 14.5 and 14.9 volts. The battery is completely charged and has achieved its ...

### Best Practices for Charging, Maintaining, and Storing Lithium ...

By understanding the impact of battery age and time, you can make informed decisions when purchasing and using lithium-ion batteries. By following best practices, you can maximize the ...



### Optimal Lithium Battery Charging: A Definitive Guide

Running a lithium battery pack at extreme SoC levels - either fully charged or fully discharged - can cause irreparable damage to the electrodes and reduce overall capacity over ...

### What is the Voltage of a 12-Volt Lithium-Ion Battery ...

According to industry standards and manufacturer recommendations, a healthy, fully





charged 12V lithium-ion battery pack should ...



## Do You Need to Fully Charge a Lithium-Ion Battery? Myths and ...

No, it is not necessary to fully discharge a lithium-ion battery before charging. In fact, modern lithium-ion batteries benefit from partial discharges and frequent recharges.

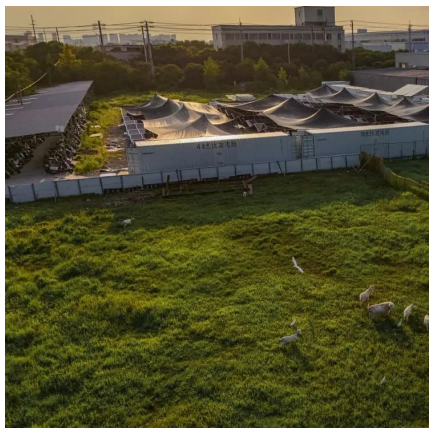
## 12V Lithium-Ion Battery: What Voltage at Full Charge?

What voltage is a 12V lithium-ion battery when fully charged? Depending on its chemistry, a fully charged 12V lithium-ion battery typically reads between 13.2V and 13.6V.



## 12V Lithium-Ion Battery: What Voltage at Full Charge?

What voltage is a 12V lithium-ion battery when fully charged? Depending on its chemistry, a fully charged 12V lithium-ion battery typically ...





## **A guide to lithium battery full charge voltage mechanics**

A 12-volt lithium-ion battery that has been completely charged should show between 14.5 and 14.9 volts. The battery is completely charged ...



## **Do Lithium-ion Batteries Need to be fully Charged-First Charge**

And How do you care for a lithium-ion battery? First thing first, Do lithium-ion batteries need to be fully charged before first use? You are charging a battery. The positively ...

## **Common Lithium-ion Battery Problems and How to ...**

Caught fire, explosion lithium-ion battery can't seem to knock the accident off. Why would this happen? To get to the bottom of the problem, it's ...



## **Battery Voltage Explained: Nominal, Charged, Minimum, and Cut ...**

Charged voltage (also called full-charge voltage) is the highest voltage a cell reaches when fully charged. Exceeding this voltage can damage the battery and reduce its ...



## [LiFePO4 Voltage Charts \(1 Cell, 12V, 24V, 48V\)](#)

Explore the LiFePO4 voltage chart to understand the state of charge for 1 cell, 12V, 24V, and 48V batteries, as well as 3.2V LiFePO4 cells.



## [10 Myths About Charging Lithium-Ion Batteries](#)

The perceived notion that frequent, small charges harm the battery is more applicable to past battery technologies. For today's lithium-ion cells, regular charging is ...

## **What Voltage Should a 12V Battery Read When Fully Charged?**

A fully charged 12V lead-acid battery typically reads between 12.6 and 12.8 volts at rest, indicating that the battery's cells are fully saturated with charge. Lithium-based 12V ...





## Optimal Lithium Battery Charging: A Definitive Guide

Running a lithium battery pack at extreme SoC levels - either fully charged or fully discharged - can cause irreparable damage to the electrodes ...

### Why does my 48V battery fully charge to 55.43V when according

The max charge on almost all 18650 cells is 4.2V per cell. Most 48V rated packs use 13 cells in serie (13S), so  $13S \times 4.2V = 54.6V$  as the max charge. In fact, your battery pack may last ...



## Understanding 18650 Battery Voltage: From Basic to ...

The nominal voltage of an 18650 battery is usually 3.6V or 3.7V, which refers to the typical voltage of the cell during its discharge cycle.

### 5 Easy Mistakes to Avoid When Charging Lithium-Ion ...

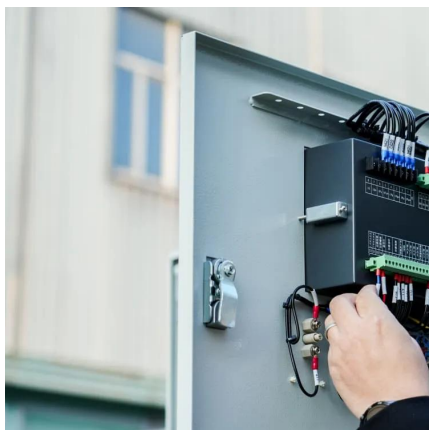
Are you making these mistakes when charging your lithium-ion batteries? You could be doing significant harm to your batteries and devices.





## Understanding Battery Charging: When is a Battery Fully Charged?

In conclusion, a Lithium Polymer Battery is fully charged when it reaches the predefined voltage threshold set by the Lithium Polymer Battery manufacturer, typically around ...



## [How can you tell if a battery is fully charged?](#)

The only accurate way to tell if a VRLA DRY CELL AGM or GEL battery is fully charged is by using a good voltmeter to determine the open circuit voltage ...



## Debunking Lithium-Ion Battery Charging Myths: Best Practices for

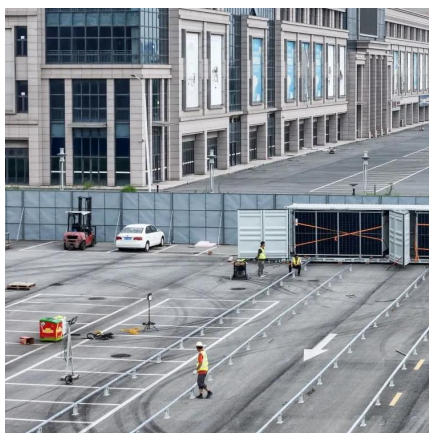
Explore the truth behind common lithium-ion battery charging myths with our comprehensive guide. Learn the best practices to enhance your battery's performance and extend its lifespan.





## Ultimate Guide to Lithium-Ion Battery Voltage Chart

Lithium-ion battery voltage chart represents the state of charge (SoC) based on different voltages. This Jackery guide gives a detailed ...



## What Should Battery Pack Voltage Be When Fully Charged?

For most common battery types, such as lead-acid and lithium-ion, fully charged voltages vary: lead-acid batteries typically read 12.6V to 12.8V, while lithium-ion batteries can ...

## Do I Need to Fully Charge a Lithium Ion Battery ...

When you first get a lithium-ion battery, it is important to charge it fully. This will help ensure that the battery performs at its best from the start. ...



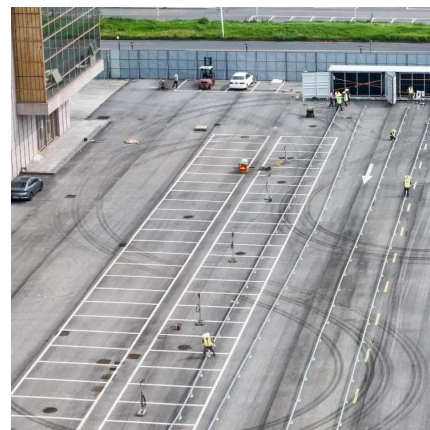
## Battery State of Charge Chart

After the battery or battery pack has been fully charged, disconnected from the battery charger, and let stand for an hour or longer, then its state of charge Voltage can be accurately ...



### [How to Properly Charge My Lithium Battery?](#)

Or just charge them separately. If you found that the battery bank's total capacity could not reach what it should be after charging the pack ...



### **How to Tell if Your Battery Is Bad in 3 Easy Steps**

If your battery is: Reading 0 volts, chances are the battery experienced a short circuit Cannot reach higher than 10.5 volts when being ...

### **What is the Voltage of a 12-Volt Lithium-Ion Battery When Fully Charged?**

According to industry standards and manufacturer recommendations, a healthy, fully charged 12V lithium-ion battery pack should have a voltage between 12.6V and 12.8V.



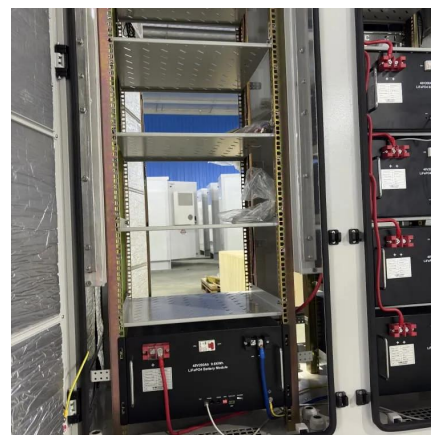


## Do I Need to Fully Charge a Lithium Ion Battery Before Use? In ...

When you first get a lithium-ion battery, it is important to charge it fully. This will help ensure that the battery performs at its best from the start. However, after the initial charge, you ...

### 10 Myths About Charging Lithium-Ion Batteries

The perceived notion that frequent, small charges harm the battery is more applicable to past battery technologies. For today's lithium-ion cells, ...



## Contact Us

---

For catalog requests, pricing, or partnerships, please visit:  
<https://talbert.co.za>