

# **Is 5G communication also a base station**





## Overview

---

What is a 5G base station?

As the world continues its transition into the era of 5G, the demand for faster and more reliable wireless communication is skyrocketing. Central to this transformation are 5G base stations, the backbone of the next-generation network. These base stations are pivotal in delivering the high-speed, low-latency connectivity that 5G promises.

How does the architecture of a base station affect 5G?

The architecture and shape of the base station directly affect how the 5G network is deployed. In the technical standards, the frequency band of 5G is much higher than that of 2G, 3G and 4G networks.

What is a 5G baseband unit?

The 5G baseband unit is responsible for NR baseband protocol processing, including the entire user plane (UP) and control plane (CP) protocol processing functions, and provides a backhaul interface (NG interface) with the core network and an interconnection interface (Xn interface) between base stations ).

What are the advantages of a 5G base station?

**Massive MIMO:** The use of a large number of antennas allows the base station to serve multiple users simultaneously by forming multiple beams and spatially multiplexing signals. **Modulation Techniques:** 5G base stations support advanced modulation schemes, such as 256-QAM (Quadrature Amplitude Modulation), to achieve higher data rates.

What frequency bands do 5G base stations use?

**Utilization of Frequency Spectrum:** 5g Base Stations Operate in specific Frequency Bands Allocated for 5G Communication. These bands include Sub-6 GHz Frequencies for Broader Coverage and Millimeter-Wave (Mmwave)



Frequencies for Higher Data Rates.

Does 5G increase power consumption compared to 4G?

Compared with 4G networks, 5G not only increases power consumption by more than three times, but also doubles the demand for 5G base stations due to the attenuation of coverage. Therefore, for operators, 5G base stations The high power consumption has even become the primary reason for restricting 5G network construction.



## Is 5G communication also a base station

---



### What is a 5G base station?

A 5G Base Station, also Known as A GNB (Next-Generation NodeB), is a fundamental component of the fifth-generation (5G) Wireless ...

### What is a 5G Base Station?

Central to this transformation are 5G base stations, the backbone of the next-generation network. These base stations are pivotal in delivering the high-speed, low-latency ...



### New Technology Allows Satellites to Act as Base Stations to Support 5G

Splitting the base station Fraunhofer IIS has successfully demonstrated in the lab how satellites can be integrated into mobile communications, even if their performance falls ...

### base station in 5g

A 5G base station, also known as a gNodeB (gNB), is a critical component of a 5G network infrastructure. It plays a central role in enabling





...



## What Is 5G Base Station?

5G base stations are the core equipment of 5G networks, providing wireless coverage and realizing wireless signal transmission between wired communication networks ...



## Towards Integrated Energy-Communication-Transportation Hub: A Base

Abstract The rise of 5G communication has transformed the telecom industry for critical applications. With the widespread deployment of 5G base stations comes a significant ...



## base station in 5g

A 5G base station, also known as a gNodeB (gNB), is a critical component of a 5G network infrastructure. It plays a central role in enabling wireless communication between user ...





## Installation of Base Stations and Radiation Safety

The rollout of 5G services needs the establishment of an extensive network of radio base stations and small cells to support very high-speed data transmission and ubiquitous coverage. To ...



## What Is 5G Base Station?

5G base stations are the core equipment of 5G networks, providing wireless coverage and realizing wireless signal transmission between wired ...

## 5G Network Evolution and Dual-mode 5G Base Station

The fifth generation (5G) networks can provide lower latency, higher capacity and will be commercialized on a large scale worldwide. In order to efficiently deploy 5G networks on the ...



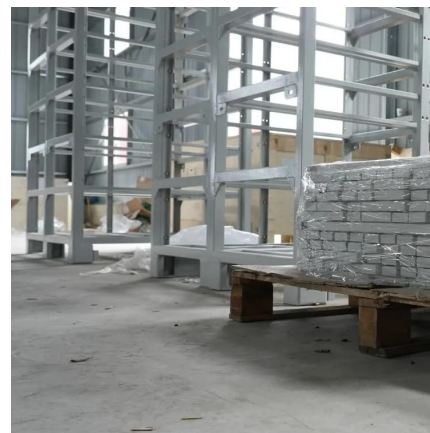
## Base station

In amateur radio, a base station also communicates with mobile rigs but for hobby or family communications. Amateur systems sometimes serve as dispatch ...



## Unveiling the 5G Base Station: The Backbone of Next-Gen ...

5G base stations are the critical infrastructure that enables the seamless transmission of data between devices and the core network.

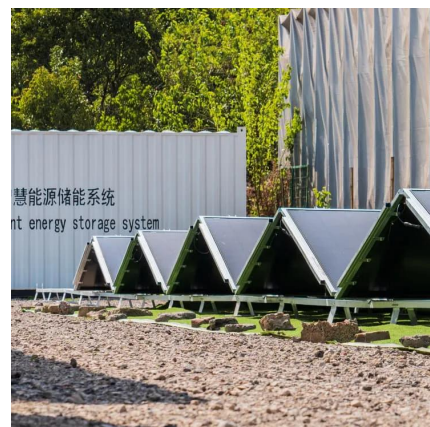


## What Is A 5G Base Station?

The 5G base station is the core equipment of the 5G network, providing wireless coverage and realizing wireless signal transmission between the wired ...

## Learn What a 5G Base Station Is and Why It's Important

A 5G base station is the heart of the fifth-generation mobile network, enabling far higher speeds and lower latency, as well as new levels of connectivity. Referred to as gNodeB, 5G base ...







## EMBP: Towards an Efficient and Computing-Aware Base Station ...

5G communication performance is highly correlated with the locations of cellular base stations (BSs). Many previous works have studied the placement of BSs, however, millimeter-wave ...

## 5G Communication Signal Based Localization with a Single Base Station

With the growing demand for high accuracy indoor localization, the fifth generation (5G) wireless communication technology based localization attracts increasing attention. ...



## 5G Base Station

5G base station is the core equipment of 5G network, which provides wireless coverage and realizes wireless signal transmission between wired communication network ...

## Research and Implementation of 5G Base Station Location ...

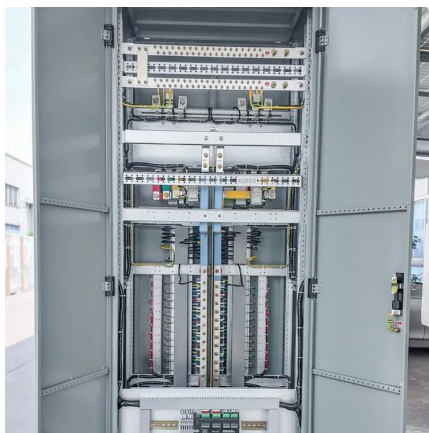
The application requirements of 5G have reached a new height, and the location of base stations is an important factor affecting the signal. Based on factors such as base station ...





## What is a 5G base station?

A 5G Base Station, also Known as A GNB (Next-Generation NodeB), is a fundamental component of the fifth-generation (5G) Wireless Network Infrastructure. It serves ...



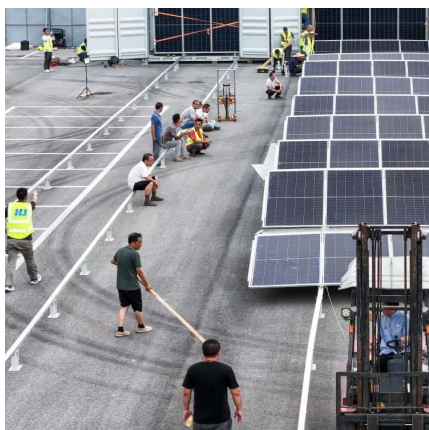
## What Is a Base Station? Exploring the Core of 5G Networks and ...

The base station is an indispensable piece of infrastructure in the mobile communication network, silently supporting every phone call, message, and network ...



## What is a 5G Base Station?

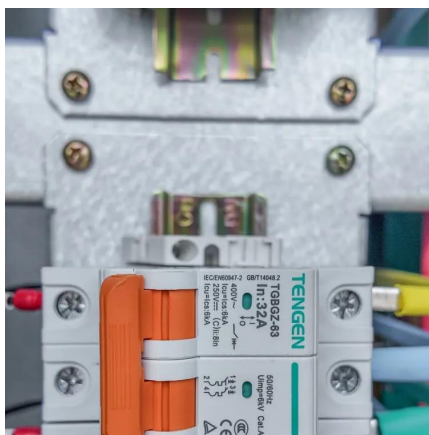
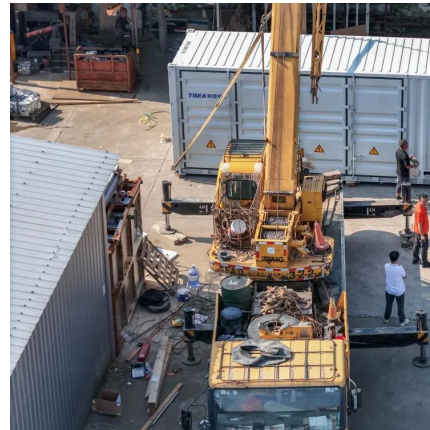
Central to this transformation are 5G base stations, the backbone of the next-generation network. These base stations are pivotal in delivering ...





## BS (Base Station)

A base station (BS) is a key component of modern wireless communication networks, providing the interface between wireless devices and the network infrastructure. In ...



## What is the difference between Node B, eNodeB, and ...

Node B is the radio base station in 3G UMTS networks; eNodeB is the radio base station in 4G LTE networks; gNodeB (gNB) is the radio base ...

## Kyocera Develops AI-Powered 5G Virtualized Base ...

Using AI, Kyocera's 5G virtualized base stations will enhance performance, reduce power consumption, and streamline both operations and ...



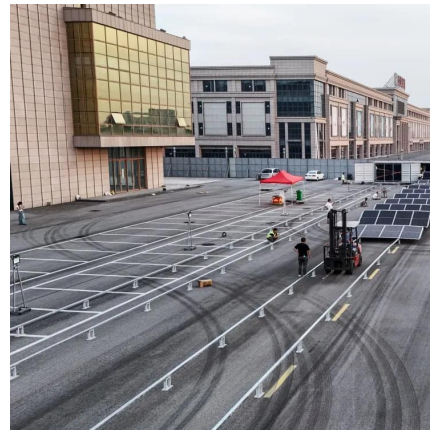
## What is 5G Base Station?

A 5G base station, also known as a 5G NodeB (gNB) in the 3GPP (3rd Generation Partnership Project) standards, is a radio access point that ...



## what is a 5g base station?

the difference between the 5g base station and the 4g baseband is different. the first difference of the 5g baseband is the appearance of a device called aaU. this device is actually not very ...



## 5G Base Station

5G base station is the core equipment of 5G network, which provides wireless coverage and realizes wireless signal transmission between ...



## What Is A 5G Base Station?

The 5G base station is the core equipment of the 5G network, providing wireless coverage and realizing wireless signal transmission between the wired communication network and the ...



## Optimizing the ultra-dense 5G base stations in urban outdoor ...

The developed model can facilitate the rollout of 5G technology. Due to the high propagation loss and blockage-sensitive characteristics of millimeter waves (mmWaves), ...

## What is a Base Station?

Base stations are also known as 5G cell internet towers. As there is an increase in the demand for cellular devices (courtesy of 5G tech and ...



## Contact Us

---

For catalog requests, pricing, or partnerships, please visit:  
<https://talbert.co.za>