

Inverter battery power off





Overview

Can I switch off my inverter when my batteries are fully charged?

Well, yes, you can switch off your inverter when your batteries are fully charged and it is not in use. Once the batteries are fully charged the consumption power is less than 1% of their capacity. Hence keeping your inverter ON would not make any difference in your electricity bills.

Can you turn off a power inverter if a home is off-grid?

With off grid homes the usual set up is battery bank + generator. If the battery is depleted and you switch to generator, you can turn off the inverter. Of course if the batteries are dead or damaged, you have to shut off the inverter before replacing them. If you don't need any AC appliances, might as well turn off the inverter.

What happens if you turn off an inverter?

When there is a cut-off, the inverter will be activated and power the home appliances. The inverter battery keep gets draining even if you turn off the inverter. So it would not be a wise decision to keep the inverter off when not in use. Over time the energy stored in the inverter will be lost.

How do I Turn Off the inverter?

First: Switch off the inverter from the front side button, press and hold it until the inverter is switched off. Second: Switch off the power socket, power the inverter from the grid, and then unplug the input power plug of the inverter from your home power socket.

Do inverters drain batteries?

No, inverters didn't drain batteries. However, batteries lose energy if the inverter input power is disconnected or they are isolated from the inverter. Hence, batteries are needed to connect with the inverter and the inverter input power is needed to connect with the grid. To keep batteries fully



charged.

What if my inverter runs only on battery power?

If your inverter runs solely on battery power, you will have to turn it off at some point. Specifically when the battery has to be replaced or recharged. If you completely discharged the battery bank, the inverter cannot run. Turn off the inverter and recharge the battery. When it is full, turn the system on again.



Inverter battery power off



Can I Leave My Inverter On All The Time?

Generally speaking, it is not a good idea to leave your power inverter on all of the time. This is particularly important if you have a limited energy supply in your ...

How to Switch Off Inverter When Not in Use?

If you are away from home for 2-3 months, turning off the inverter will prevent the battery from self-discharging. If the motorhome is parked for an extended period, you must ...



Frequently Asked Questions About Power Inverters , DonRowe

A power inverter changes DC power from a battery into conventional AC power that you can use to operate all kinds of devices electric lights, kitchen appliances, microwaves, power tools, ...

Can I Leave My Inverter On All The Time?

Generally speaking, it is not a good idea to leave your power inverter on all of the time. This is



particularly important if you have a limited energy supply in your batteries and don't have ...



[Off Grid Power Products - TheInverterStore](#)

Largest selection of back up power, solar and off grid products. Shop now!

Inverter Usage Guide: Should You Turn It Off to ...

By turning off the inverter when not in use, you can reduce the overall runtime and extend the lifespan of the device. This is particularly ...



[Renogy 1000W Power Inverter with Low Voltage ...](#)

Shop Renogy 1000W Power Inverter with Low Voltage Battery Cut Off, ETL Listed, GFCI Safety Circuit, USB Port, Wired Remote, and LED Indicators ...



Battery Based Inverters at Lowes

Renogy 3500W 48V Solar Inverter Charger combines solar charging, AC/generator battery charging, and battery inverting into one convenient solution to take your off-grid system to the ...



[High Power Off-grid Battery Inverter ...](#)

From 1000 kW to 1500 kW, off-grid high power battery inverter PCS1000/1200HV/1500HV can work alone or with solar chargers and ...

[Off Grid Inverters at Tractor Supply Co.](#)

Power up with off-grid inverters from Tractor Supply Company. Reliable, efficient energy solutions for rural and remote living.



[Should Inverter Be On When Plugged Into Shore ...](#)

Should you keep your inverter plugged in? Does it do any harm to you or your RV? There are some advantages and disadvantages when leaving your ...



How to Switch Off Inverter When Not in Use?

Well, yes, you can switch off your inverter when your batteries are fully charged and it is not in use. Once the batteries are fully charged the consumption power is less than ...



How to switch off Inverter when not in use

Whether you're going on vacation, performing maintenance, or simply looking to save some energy, understanding how to properly turn off ...

Inverter Usage Guide: Should You Turn It Off to Extend Its Life

By turning off the inverter when not in use, you can reduce the overall runtime and extend the lifespan of the device. This is particularly important for battery-powered inverters, ...





Do I Need to Turn Off My Inverter When Not in Use?

If you are away from home for 2-3 months, turning off the inverter will prevent the battery from self-discharging. If the motorhome is parked for an extended period, you must ...

Can I leave My Inverter ON All the Time?

Yes. It is possible but not advisable. When the inverter is kept on, it will start draining the battery quickly. Even if no electronic appliance is connected to the inverter, the ...



Can inverter be switch off when not in use?

Yes, you can switch off your inverter when the batteries are fully charged and it is not in use. But it is not advisable if you are not leaving home for 1 or 2 months.

12 Volt Inverters With Battery Charger

Power Inverters with built in direct current battery chargers provide a uninterruptible power supply. If you require a home power supply backup this would be the solution.



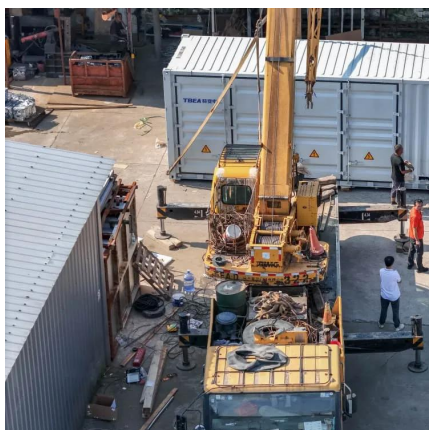
Can inverter be switch off when not in use?

Yes, you can switch off your inverter when the batteries are fully charged and it is not in use. But it is not advisable if you are not leaving home ...



How to switch off Inverter when not in use

Whether you're going on vacation, performing maintenance, or simply looking to save some energy, understanding how to properly turn off your inverter is important for both ...



RV Inverter Problems: 7 Ultimate Problems Answered ...

An RV inverter is great when you need regular ac power. These devices serve RVgoers well when off shore power and there is a need to use RV outlets and ...



Inverter Amp Draw Calculator

The current drawn by a 1500-watt inverter for a 48 V battery bank is 37.5 amps. as per the inverter amp draw calculator.



Rv Inverter on Or off When Plugged in: Essential ...

Yes, you should turn off your RV inverter when plugged in. This helps to avoid unnecessary power consumption and potential wear on your ...

Should I Leave My Inverter On All the Time?

If the battery is depleted and you switch to generator, you can turn off the inverter. Of course if the batteries are dead or damaged, you have to shut off the inverter before replacing them.



Will A Power Inverter Drain My Battery? Impact On Car Batteries ...

Yes, leaving a power inverter plugged in can drain your battery over time. Power inverters consume a small amount of electricity, even when they are not in use.



[Common Home Inverter Problems and How to Fix Them](#)

Learn about the most common home inverter problems and how to fix them. From battery issues to inverter malfunctioning, this guide provides easy solutions to keep your home ...



[How to Keep Inverter from Draining Battery](#)

Learn how to optimize inverter settings to prevent battery drain. Adjust voltage settings and use power saving modes for better performance.

[How to Switch Off Inverter When Not in Use?](#)

For power backup and tackling blackouts, an inverter is a very essential device. It is a regular-use device but still, a lot of people have small ...





SNA-UM-0604.cdr

AC First: During the setting time, system will use AC to take load first, use solar power to charge the battery. If the battery is full, solar power may be wasted. When out of the setting time, ...

Contact Us

For catalog requests, pricing, or partnerships, please visit:
<https://talbert.co.za>