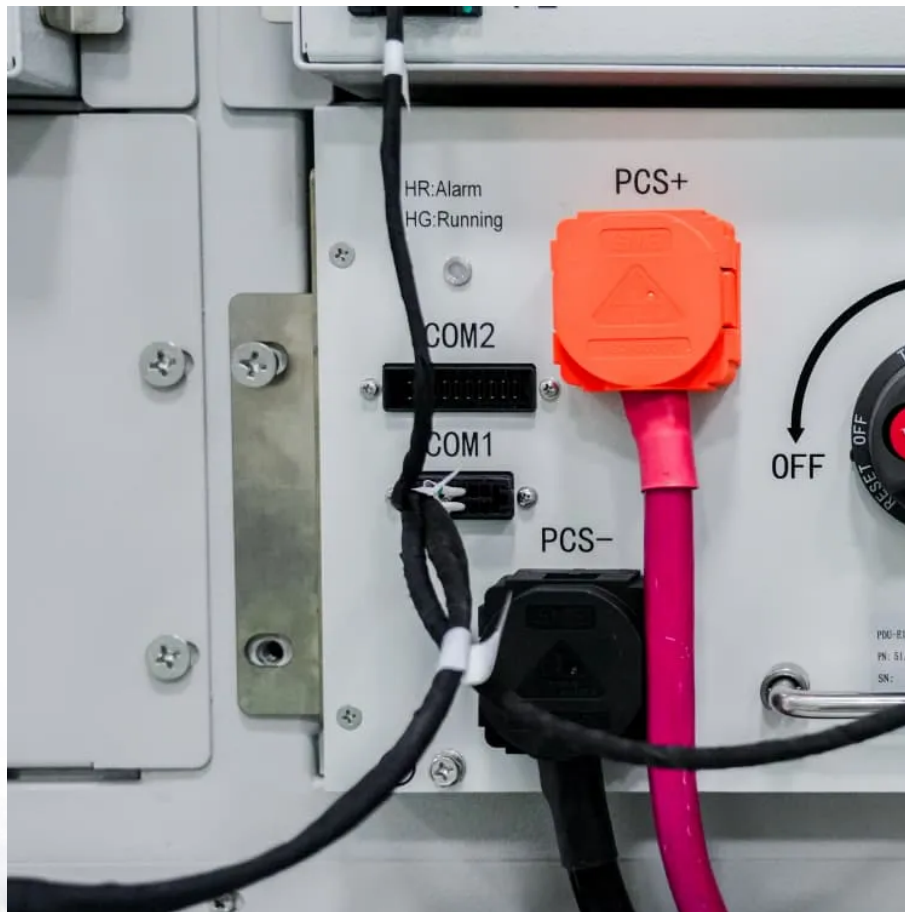


Hybrid energy lightning protection for rooftop communication base stations





Overview

What is the best lightning and surge protection for telecommunication facilities?

When lightning strikes, relying solely on air terminals proves insufficient in effectively safeguarding telecommunication facilities. The best lightning and surge protection for telecom involves a synergistic combination of key components such as tower lightning rods, tower lightning arresters, and grounding systems.

How should a lightning protection System (RBS) be formed?

The earthing network of an RBS should be formed by a ring loop surrounding the tower, equipment room and fence, at a minimum. The mean radius r_e of this ring loop should be not less than l_1 , as indicated in Figure 1 and this value depends on the lightning protection system (LPS) class and on the soil resistivity.

Are rooftop antennas protected from lightning strikes?

If the antenna is installed on the rooftop, e.g., antenna positions 2 of Figure 29, depending on the relative height of building and the installation of the antenna system, it may be considered to be inherently protected from direct lightning strikes or be impacted by or exposed to direct lightning strikes.

What is radio tower lightning protection?

Lightning rods serve as primary devices for safeguarding various structures against the destructive forces of lightning. Yet, the dynamics differ when it comes to the application of radio tower lightning protection.

How do antenna towers protect against lightning?

In urban areas where antenna towers coexist with tall structures like buildings and power towers, there is competition for lightning triggers. Taller structures, including antenna towers, offer a cone of protection, shielding shorter



elements within the cone from direct strikes.

What is a lightning protection system (LPS)?

3.2.3 lightning protection system (LPS): Complete system used to reduce physical damage due to lightning flashes to a structure. NOTE – An LPS consists of both external and internal lightning protection system.



Hybrid energy lightning protection for rooftop communication base



Lightning and Surge Protection for Communication Station

Install lightning rods, grounding, surge protectors, shielding, and follow standards for effective communication station protection.

CN210403271U

The utility model relates to the technical field of communication engineering cables, in particular to a lightning protection cable for a communication base station, which comprises a cable body, ...



LIGHTNING PROTECTION SOLUTION FOR BASE STATION

To properly protect the power line of a base station, the line entering the building should use a cable with metal cladding, buried underground. Both ends of the cladding should ...

Wireless Telecom Base Site Solutions , Hybrid Power

We offer telecom site solutions that utilize hybrid energy sources for uninterrupted power supply,



easy deployment and management, remote ...



Substation Shielding Methods for Lightning Strikes

This article explains different substation shielding techniques used to reduce the chance of and damage from direct lightning strikes.

Lightning and Surge Protection for Cell Sites & 5G Macro Base Stations

When configuring network infrastructure and planning new sites, planners, installers and operators must take lightning and surge protection measures, which are also required from an ...



Communication Base Station Lightning Arrestor , HuiJue Group E

...

The next-generation communication base station lightning arrestor won't just absorb energy - it will intelligently route, convert, and even harvest surge currents. Imagine arrestors that power ...



Lightning and Surge Protection for Cell Sites & 5G ...

When configuring network infrastructure and planning new sites, planners, installers and operators must take lightning and surge protection measures, ...



[Wind Solar Hybrid Power System for the ...](#)

Then it is urgent to strengthen the base station's lightning protection system. Finally our R& D Team launched a set of photovoltaic wind ...

The Base Station in Wireless Communications: The ...

Base station, also known as BTS (Base Transceiver Station), is a key device in wireless communication systems such as GSM. Equipped with ...



[Wireless Broadband Surge Protection](#)

Two MWE surge devices are recommended per base station or subscriber unit. One should be mounted close (within 5 ft / 1.5 m) to the tower top or rooftop unit and the other at the entrance ...



Lightning protection, earthing and surge protection of base

An effective lightning protection design for a telecommunication facility requires an integrated approach to a number of key factors: Protection against direct



Lightning Protection Products for Communication ...

A hybrid lightning protection package that offers a robust and cost-effective solution for communication towers. Provides a total Lightning Protection ...

Commercial Lightning Protection Rooftop Examples

Commercial Lightning Protection Rooftop Examples Included are some Commercial Rooftop Lightning Protection System pictures that show various situations and how to protect them with ...





Protect mobile communication systems on roofs , DEHN

When constructing a new mobile communication system, setting up an isolated lightning protection system is recommended. This ensures that the separation distances to the sensitive ...

CN212695449U

The utility model discloses a 5G communication base station's lightning-arrest equipment, including lightning rod, roof, the lantern ring and lightning-arrest net, the bottom fixedly ...



Design and Evaluation of Earthing and Lightning Arrester for ...

The research work elaborates and establishes earthing and lightning arrester designing and testing protocol for solar PV power plants, with a case study of 65kW grid connected rooftop ...

Spike Lightning Rod For Communication Base Stations And ...

Spike Lightning Rod For Communication Base Stations And Water Pumping Stations, Transmission Tower, Find Complete Details about Spike Lightning Rod For ...



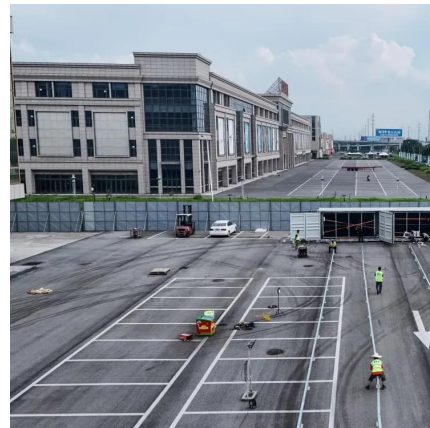
LMrev2005_Final.book

IEEE Standard Dictionary of Electrical and
Electronics Terms IEEE Guide for the Protection
of Communication Installations from Lightning
Effects IEEE Recommended Practice for ...



Commercial Lightning Protection Rooftop Examples

Commercial Lightning Protection Rooftop
Examples Included are some Commercial
Rooftop Lightning Protection System pictures
that show various ...



Wireless Telecom Base Site Solutions , Hybrid Power

We offer telecom site solutions that utilize hybrid
energy sources for uninterruptible power supply,
easy deployment and management, remote
operation and maintenance, and adaptability to a
...



ITU-T Rec. K.112 (07/2019) Lightning protection, earthing ...

The purpose of this Recommendation is to give detailed guidance on protection procedures, so that an engineer who is not a lightning protection expert can accomplish the design of the ...

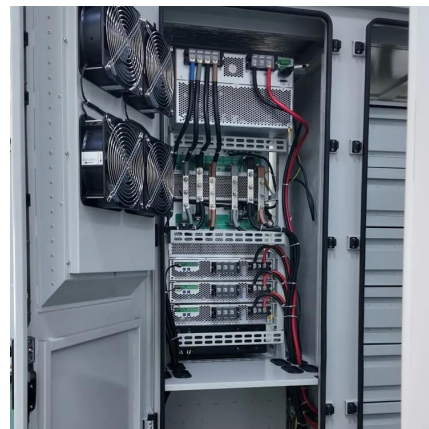


(PDF) Lightning protection design of solar photovoltaic ...

Solar photovoltaic (PV) system is one of the promising renewable energy options for substituting the conventional energy. PV systems are ...

LIGHTNING PROTECTION SOLUTION FOR BASE ...

To properly protect the power line of a base station, the line entering the building should use a cable with metal cladding, buried ...



Lightning and Surge Protection for Telecom

Empower residential safety through lightning and surge protection in telecom, telecommunication, mobile base station and radio tower.



ITU-T Rec. K.112 (07/2019) Lightning protection, earthing ...

Summary Recommendation ITU-T K.112 provides a set of practical procedures related to the lightning protection, earthing and bonding of radio base stations (RBSs). It considers two types

...



Contact Us

For catalog requests, pricing, or partnerships, please visit:
<https://talbert.co.za>