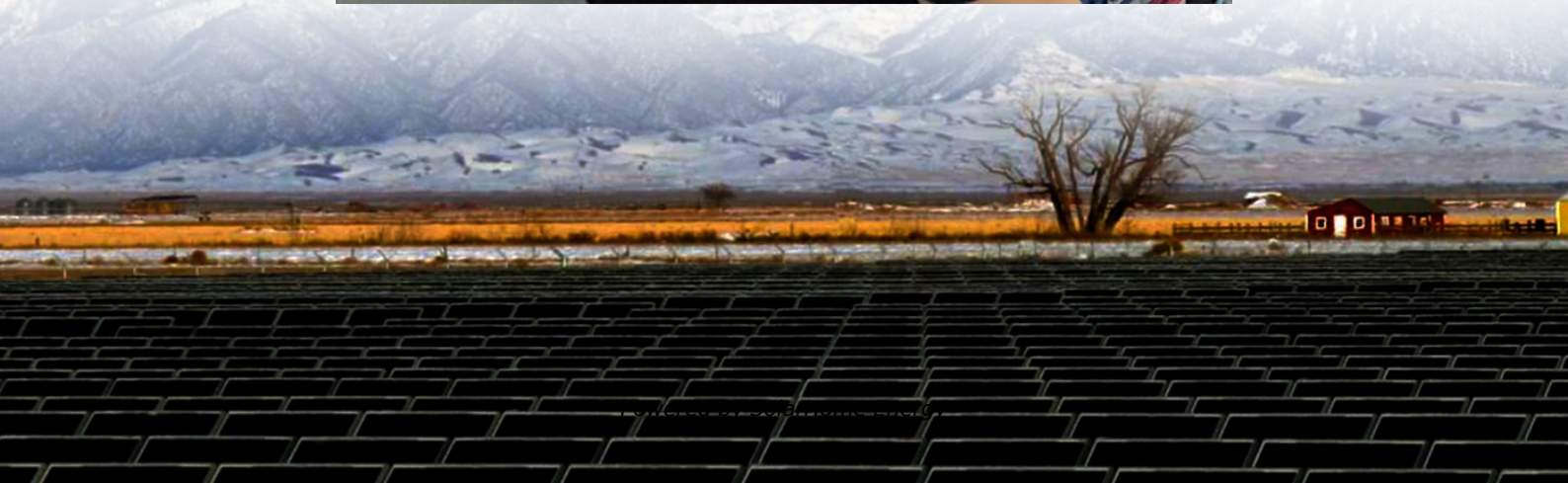


# **Huawei s domestic 5G communication base station inverter grid connection rate**





## Overview

---

In Hangzhou, the 5G Power solution deployed by China Tower and Huawei supports one cabinet for one site and boasts smart features like intelligent peak shaving, intelligent voltage boosting, and intelligent energy storage.

China Tower is a world-leading tower provider that builds, maintains, and operates site support infrastructure such as telecommunication towers, high-speed rail, subway systems.

China Tower and Huawei conducted joint pilot verification in 2018 and found that the 5G Power solution could support effective 5G site deployment without changing the grid, power distribution or cabinets. This in turn could cut retrofitting costs for a single site by more than.

How does Huawei's 5G power work?

Huawei's 5G Power uses AI to enable communication and real-time connectivity, and the global management of grid power, energy storage, temperature control, and loads. These capabilities achieve green connectivity and computing, saving energy across three layers: modules, sites, and the network.

What is Huawei 5G power boostli energy storage system?

With the Huawei 5G Power BoostLi energy storage system, Huawei has unlocked greater potential in site energy storage systems. The system provides a three-tier architecture comprising local BMS, energy IoT networking, and cloud BMS.

What is Huawei 5G power?

For site asset management, Huawei's 5G Power integrates multiple smart anti-theft measures including digital anti-theft and AI image analysis. These measures clarify site asset management and evolve anti-theft systems from physical to digital. In traditional power supply systems, the sole focus is on rectifier efficiency.

Why is Huawei a leader in the development of 5G?



With the aim of achieving ubiquitous green connectivity and computing, Huawei is a leader in the digitalization of site power. It works with the telecommunications industry to explore and drive the development of 5G based on the concept of simple, intelligent, and green.

What is 5G power?

A joint innovation between China Tower and Huawei, 5G Power is a key advancement that will promote the maturity of the 5G power industry by introducing a new approach to the power model for 5G sites. In 2019, the 5G Power solution won ITU's Global Industry Award for Sustainable Impact.

What is 5G power in Hangzhou?

In Hangzhou, the 5G Power solution deployed by China Tower and Huawei supports one cabinet for one site and boasts smart features like intelligent peak shaving, intelligent voltage boosting, and intelligent energy storage. 1. One Cabinet for One Site



## Huawei s domestic 5G communication base station inverter grid con

---



### Huawei completes all tests of 5G millimeter wave base stations

With the DDSU frame structure, the single-user downlink peak rate in the millimeter-wave frequency band is greater than 7Gbps, and the cell downlink peak rate is ...

### 5G NR -- ??(Base Station)-???-???

??(Base Station)??????????????

RRC(?????):?????????????,?????????,RRC ???? ...



### Digitalizing site power for green connectivity and ...

We've seen a series of major new changes taking place in communications networks, including increased wireless frequency bands and sites, fiber ...



### Huawei wins huge share of China Mobile's 5G base ...

Huawei Technologies has secured a major contract that will see it supply over half of the 5G



base stations for telco China Mobile between 2023 ...



### **DBS5900 Distributed Base Stations -- Huawei Enterprise**

The distributed architecture is adopted to separate the RF unit part of the base station from the baseband unit part, connecting the two parts through optical fiber, which minimizes the feeder ...



### **HUAWEI COMMUNICATE**

Better connections: More connections and bigger pipes will harness the advantages of 5G and cloud-and-network synergy and enable the digital transformation of every industry. Better ...



### **5.5G Innovation Paves the Way to an Intelligent World**

In the space domain, 5.5G base stations can adaptively adjust the number of activated spatial elements to save energy, including the transmit unit, antenna panel, and logical antenna port.







## 5.5G Innovation Paves the Way to an Intelligent World ...

In the space domain, 5.5G base stations can adaptively adjust the number of activated spatial elements to save energy, including the transmit unit, antenna ...

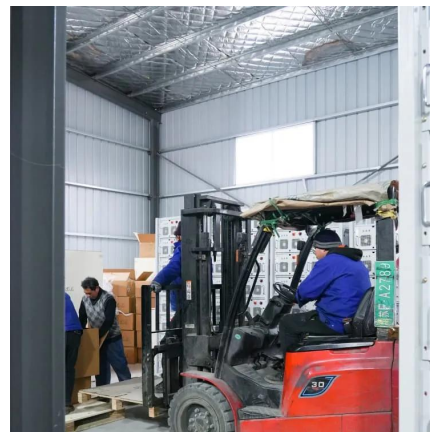


## 5G Network Slicing Enabling the Smart Grid

The ultra-low latency (1 ms) and massive access (10 million connections/square kilometer) network capabilities can well meet the connection requirements of core industrial control ...

## A Milestone in Grid-Forming ESS: First Projects Using Huawei's ...

The world's first batch of grid-forming energy storage plants has passed grid-connection tests in China, a crucial step in integrating renewables into power systems. ...



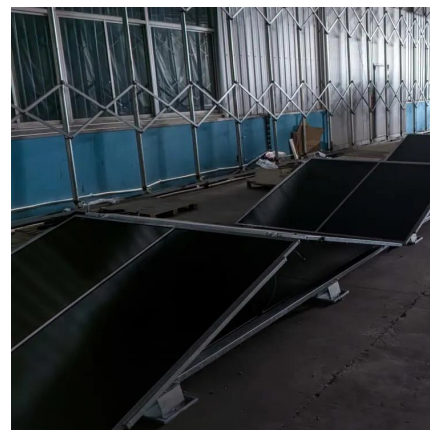
## Digitalizing site power for green connectivity and ...

This approach opens up base station resources, transforming them from communication stations into social stations that maximally utilize resources. In ...



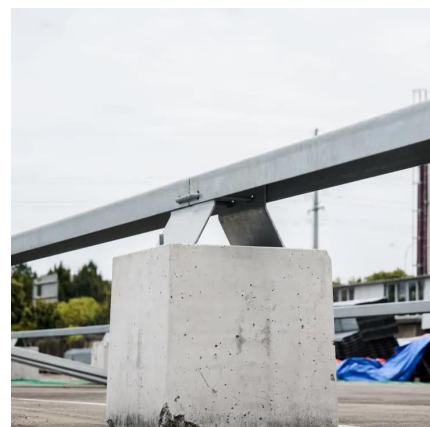
## base station in 5g

A 5G base station, also known as a gNodeB (gNB), is a critical component of a 5G network infrastructure. It plays a central role in enabling ...



## Connecting the RS485 Communications Cable (Inverter Cascading)

Connecting the RS485 Communications Cable (Inverter Cascading) Procedure Connect the signal cable to the signal cable connector. Figure 5-22 Installing the cable ...



## [How Do 5G and AI Work Miracles on Power Grids?](#)

In the smart grid era, we are witnessing the in-depth integration of 5G and AI with power grids in more and more scenarios, including new energy grid ...



## **Huawei completes all tests of 5G millimeter wave ...**

With the DDDSU frame structure, the single-user downlink peak rate in the millimeter-wave frequency band is greater than 7Gbps, and the cell ...

## **5G Power: Creating a green grid that slashes costs, emissions**

China Tower and Huawei conducted joint pilot verification in 2018 and found that the 5G Power solution could support effective 5G site deployment without changing the grid, power ...



## **How energy-efficient are Huawei's 5G base stations compared to ...**

One of the key concerns in the rollout of 5G networks is the energy efficiency of the base stations, as they are critical components in the delivery of high-speed mobile broadband services. In ...

## **Huawei will launch lowest power consumption 5G base station, ...**

Through joint verification, the China Mobile Research Institute and Huawei found that this solution substantially reduces network energy consumption, with an average energy ...





## BTS5900 Hardware Description

Explore the BTS5900 base station hardware, including cabinet components, specifications, and configurations. A comprehensive guide for telecom engineers.



## Smart Grid eLTE Private Network Solution

Smart Grid eLTE Private Network Solution One-network multi-service capability, short construction period, and high economic benefits, the most cost-effective method for terminal ...



## Digitalizing site power for green connectivity and computing

We've seen a series of major new changes taking place in communications networks, including increased wireless frequency bands and sites, fiber replacing copper, all-optical FTTx, ...





## Communication Base Station Power Quality , Huijue Group E-Site

As millimeter-wave deployments intensify, doesn't it make sense to finally solve the communication base station power quality puzzle? The answer lies not in bigger batteries, but ...

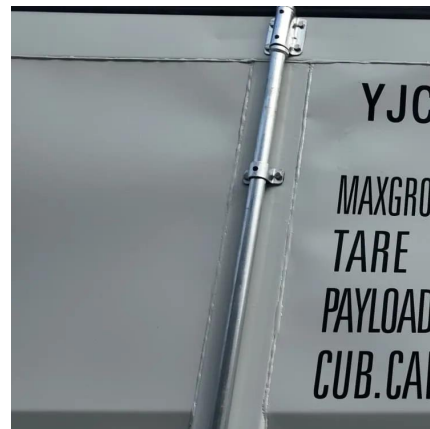


## Huawei will launch lowest power consumption 5G ...

Through joint verification, the China Mobile Research Institute and Huawei found that this solution substantially reduces network energy ...

## Case Study: China Tower & Huawei

There is a peak-valley electricity rate in many countries (like China, Portugal and so on) to balance the load power of the electricity network. Huawei's intelligent ...



## Case Study: China Tower & Huawei

There is a peak-valley electricity rate in many countries (like China, Portugal and so on) to balance the load power of the electricity network. Huawei's intelligent peak staggering can be ...



## Grid-tied Point Control

Procedure On the home screen, choose Power adjustment > Grid-tied point control.



## A Secure Transmission Strategy for Smart Grid Communications ...

As the number of Internet of Things (IoT) devices in smart grids grows, security issues arise, including eavesdropping. The fifth generation (5G) wireless technologies are the driving force ...

## Huawei Inverter Lifetime Report

Huawei's unique position as a pioneering inverter manufacturer with an extensive global distribution network and diverse clientele has provided invaluable insights into addressing the ...





## [Huawei Galaxy AI Power Plant Network Solution](#)

Architecture Huawei's intelligent wind power network solution provides end-to-end network connection for turbines, booster stations, and the centralized control center. AirEngine Wi-Fi 6 ...

## Contact Us

---

For catalog requests, pricing, or partnerships, please visit:  
<https://talbert.co.za>