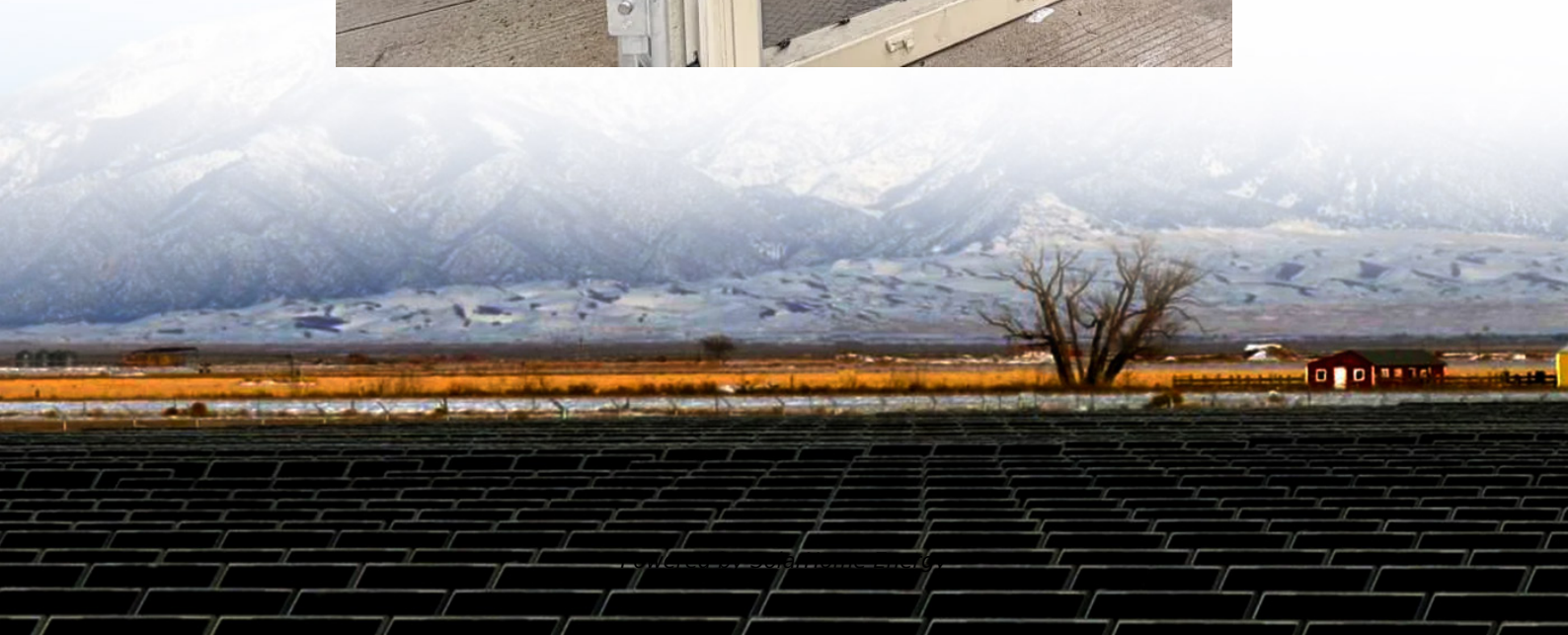


# **Huawei inverter power limit function**





## Overview

---

You are advised to choose Settings > Grid connection with limited power and enable the grid connection with limited power function. To enable this function, you need to set power meter, inverter, and grid connection with limited power parameters. Does Huawei have a DC/AC Ratio limit on solar inverters?

ads in low-light conditions during the winter season. Huawei has designed the SUN2000 solar inverters such that they can operate in “clipping” mode for sustained periods of time. Therefore, Huawei will not pose firm limits on the DC/AC ratios on its inverters, provided that the design.

What is a large DC-to-AC ratio in a Huawei inverter?

For such a setup as an “oversized installation”. In these cases, the so-called “DC-to-AC ratio” is larger than 1, or larger than 10 if you like to use percents rather than fractions. Huawei inverters are designed to automatically limit the maximum output power stated on their type plate, regardless of.

How to enable grid connection with limited power parameters?

To enable this function, you need to set power meter, inverter, and grid connection with limited power parameters. This section describes how to set grid connection with limited power parameters. Before setting the parameters, ensure that a power meter has been connected to the SmartLogger.

What if the inverter has no output power?

When the inverter has no output power, set this parameter to Positive if the active power reading of the power meter is positive. Otherwise, set this parameter to Reverse. Total power: controls the total power at the grid-tied point to limit the power fed to the power grid.

How do I control inverter output power percentage?

Inverter output power percentage is controlled by the SmartLogger when



communication between the SmartLogger and the power meter is abnormal. Specifies whether the DO port is allowed to control switch-off. Set this parameter to the DO port that controls switch-off. Set this parameter to the DO port that controls switch-on.

How do I configure multiple inverters?

For multiple inverters, use Batch configurations. Log in as admin. Choose Settings > Power Adjustment > Active Power Control 125%/s, If the maximum value range is 50%/s, set this parameter to 50%/s. to access the setting page. If the DO switch-on/of operations are not involved, ignore the switch-on/of configurations.



## Huawei inverter power limit function

---



### Grid-tied Point Control

Grid-tied Point Control Function The output power of the PV power system can be limited or reduced to ensure that the output power is within the specified range.

### SUN2000

30 rows· Specifies the total maximum active power in the inverter cascading scenario. ...



### [Export Limitation Configuration Guide](#)

The SmartLogger detects the active power of the grid-tied point electric meter, controls the active output of the inverter in a closed-loop manner, prevents the inverter output power from being ...

### [Huawei photovoltaic inverter power limit](#)

If the power limit function still works, the inverter will continue to export power as the CT cannot reach the setpoint. SUN5000-17-25K-MB0 Specs ,





HUAWEI Smart PV Global.



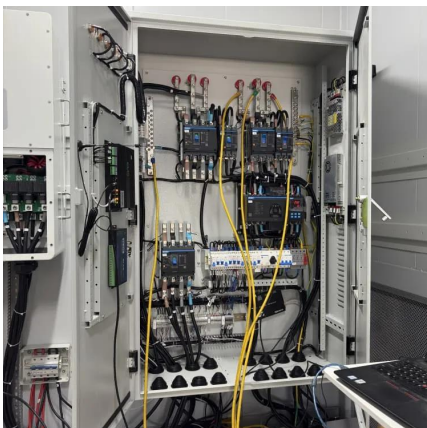
### [HUAWEI SUN2000 USER MANUAL Pdf Download](#)

It delivers three-phase, three-wire output, which is then fed to a medium- voltage power grid through a step-up transformer."



### [How to turn off Huawei inverter power limit](#)

in this video I will tell you how to turn off Huawei inverter power limit of with fusion solar is video mein main aapko bataunga ki aap Huawei mein inverter ki power limit ko kis





## Setting Feed-in at Limited Current

After the user changes the maximum feed-in current, the inverter will adjust the current to a value within the range limit. If the grid supply current exceeds the specified value by 2%, the inverter ...



## [Using Huawei SUN2000 inverters with high /A ratios](#)

Provided that the system is designed with these constraints in mind, high DC/AC ratios will not cause any detrimental effects to the reliability, lifetime or warranty of Huawei SUN2000 inverters.

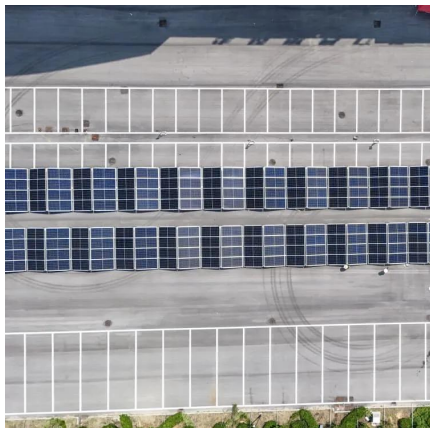
## SUN2000

Specifies the total maximum active power in the inverter cascading scenario. Specifies the maximum active power transmitted from the grid-tied point to the power grid. Specifies the ...



## [SUN5000-17-25K-MB0 Specs , HUAWEI Smart PV ...](#)

Learn more about the detailed model, parameter configuration, compatibility, environment, and product description of the SUN5000-17-25K-MB0.



## HUAWEI SUN2000 USER MANUAL Pdf Download , ManualsLib

It delivers three-phase, three-wire output, which is then fed to a medium- voltage power grid through a step-up transformer."



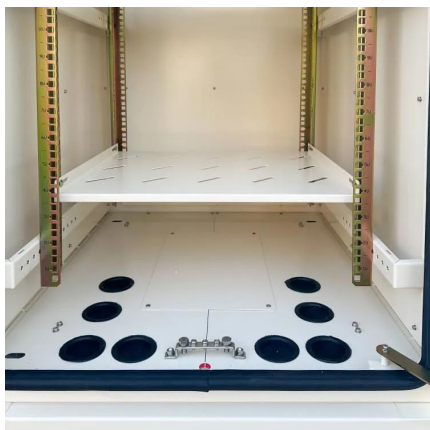
## SUN2000

M:SUN2000-175KTL-H0,SUN2000-185KTL-INH0,SUN2000-185KTL-H1;HAV3;Smart PV inverter, Smart PV Controller, Cascading, Smart I-V Curve Diagnosis Operations Related to the ...

## SUN2000

Purpose This document describes the SUN2000-(2KTL-6KTL)-L1 in terms of its installation, electrical connection, commissioning, maintenance, and troubleshooting. Before installing and ...





## Huawei SUN2000-3-10KTL-M1 Smart Hybrid Inverter Data ...

\*1 Inverter max input PV power is 20,000 Wp when long strings are designed and fully connected with SUN2000-450W-P power optimizers. \*2 The maximum input voltage is the upper limit of ...

### [How to turn off Huawei inverter power limit](#)

in this video I will tell you how to turn off Huawei inverter power limit of with fusion solar is video mein main aapko bataunga ki aap Huawei mein ...



## SUN2000

The PV string access type can be identified only when the solar inverters restore to the non-power limiting state and the current of all connected PV strings reaches the startup current. If the PV ...

### [Operations Related to the Special User](#)

M:SUN2000-125KTL-JPH0;HAV3;Smart PV inverter, Smart PV Controller, Cascading, Smart I-V Curve Diagnosis





## Huawei

The SmartLogger1000 user manual outlines the process for setting export limitation parameters to prevent countercurrent feeding into the power grid, detailing scenarios with and without circuit ...



## Export Limit with HW in addition to SW possible?

In the UK inverters with export limit control come under G100 regulations. Not sure about the Huawei, but my Solis and most other inverters I have come across have an option ...



## Inverter

The parameters vary depending on the controller manufacturer. Set parameters based on site requirements. This function applies only to the 1100 V SUN2000.





## Grid Connection with Limited Power (kW)

To enable this function, you need to set power meter, inverter, and grid connection with limited power parameters. This section describes how to set grid connection with limited ...

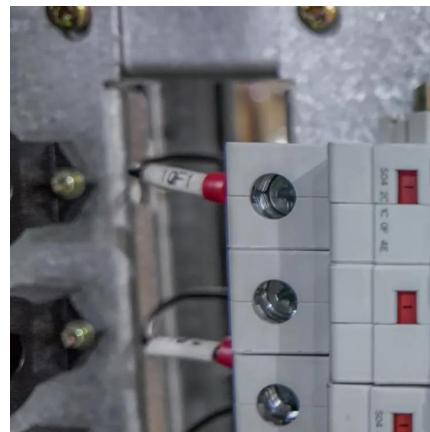


## **Detailed explanation of Huawei photovoltaic inverter parameters**

This document provides information about the ModBus protocol used in Huawei inverters, and can be used to regulate and restrict follow-up third-party integration R&D and customizations.

## Operations Related to the Special User

Parameter List Setting Power Adjustment  
Parameters Procedure Choose Function Menu > Settings > Power Adjustment to access the settings screen. Figure 7-8 Power adjustment ...



## **SmartLogger1000 User Manual**

Scenario with a circuit breaker: When the countercurrent feeding into the power grid cannot be eliminated by sending a command from the SmartLogger to lower the inverter output power, ...



## Contact Us

---

For catalog requests, pricing, or partnerships, please visit:  
<https://talbert.co.za>