

Huawei base station backup power supply installation





Overview

How many PSUs does a bbu3900 have?

Each package contains one PSU. BBU power module UPEUc, which provides power of 360 W for boards in the BBU. In addition, it provides eight external dry contact alarm ports. Optional. One piece of this power module is configured in the BBU3900 by default.

How many packages do I need to configure a Huawei antenna?

When it needs to be provided by Huawei, one package needs to be configured for a newly deployed distributed base station. Ground bar. Optional. One package is configured for each indoor site. If the antenna is provided by Huawei, two packages are configured for each site. One or two packages are configured at each site.

How many upeu is required in the bbu3900?

One piece of this board (UPEU) is configured in the BBU3900 by default. One more UPEU is required if the total power consumption of boards in the BBU3900 is more than 360 W or the BBU3900 requires backup power of less than or equal to 360 W. The second power module is configured in the slot assigned to the UEIU.

What is the cross-section area of the power cable for the BBU?

The cross-section area of the power cable for the BBU is 1.5 mm Procedure Step 1 Add an OT terminal to the power cable for the BBU. For details, see Assembling the OT Terminal and the Power Cable. 15-50 Huawei Proprietary and Confidential Issue 01 (2011-03-30) Copyright © Huawei Technologies Co., Ltd.

What is a BBU power module upeuc?

BBU power module UPEUc, which provides power of 360 W for boards in the BBU. In addition, it provides eight external dry contact alarm ports. Optional.



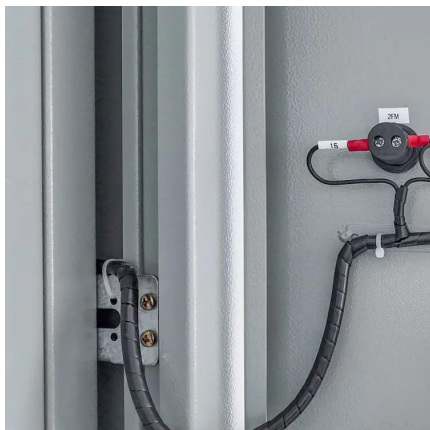
One piece of this board (UPEU) is configured in the BBU3900 by default.

How to install a backup box?

1. When a Backup Box is installed outdoors, avoid direct sunlight. You are advised to install it in a sheltered place or install an awning over it. 2. A surge protective device (SPD) needs to be installed on the grid side of the Backup Box. When drilling holes, avoid the water pipes and power cables buried in the wall.



Huawei base station backup power supply installation

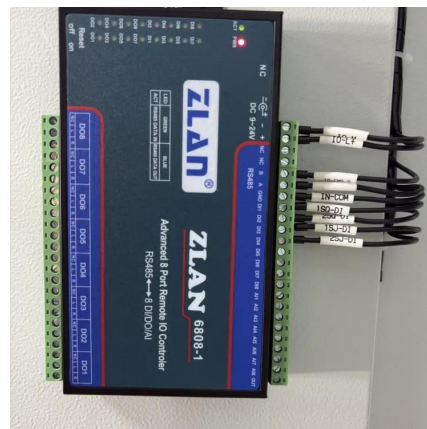


[HUAWEI BACKUP BOX-B0 QUICK MANUAL Pdf Download](#)

Page 7 Installing an Output Power Cable for Off-Grid Loads Before installing a cable, open the panel of the Backup Box, route the cable through the off-grid load port, and connect the cable.

[3900 Series Base Station Configuration Principles](#)

This section describes the number of BBUs configured in various types of base stations, the number of different types of boards in the BBU, and the slot assignment principles.



[MBB: Where agility and growth go hand in hand](#)

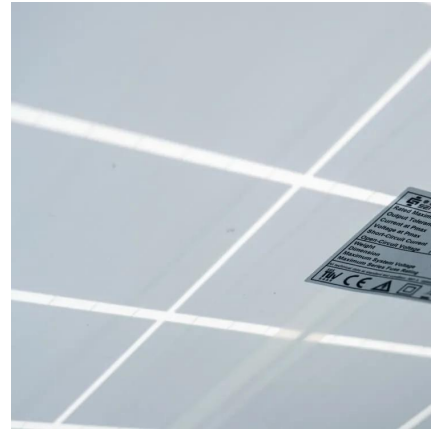
MBB: Where agility and growth go hand in hand
With the total number of base stations set to double over the next five years, Huawei's MBB 2020-focused GigaRadio and Agile Site ...

BackupBox

During system deployment, the AC power supply needs to be connected to ensure that the off-grid/grid-tied switching function of the Backup



Box can be verified.



HUAWEI BBU Installation Guide

A step-by-step procedure for installing the BBU and connecting cables in the APM30 cabinet, including connecting power, optical cables, E1 cables, and FE cables.



[SmartGuard-63A-S0 , Smart Guard , Whole Home ...](#)

SmartGuard-63A-S0(Smart Guard), coming with built-in EMMA, safeguards your whole home power supply via seamless switch and enduring power backup ...





[Huawei Backup Box B0, B1 Installation Guide // ...](#)

This guide will take you through the necessary steps to properly install Huawei's innovative backup solution, ensuring your home remains ...

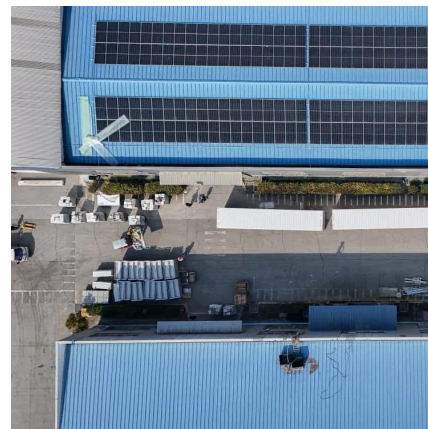


[Huawei BTS3900A Installation Guide V1.5, PDF](#)

The document provides installation instructions for a Huawei BTS3900A mobile base station. It details how to install the various components of the system, ...

[\(Video\) Backup Box \(B0, B1\) Installation Video](#)

This video describes the Backup Box- (B0, B1) in terms of its installation, electrical connection, commissioning, maintenance, and troubleshooting.



HUAWEI BBU Installation Guide

A step-by-step procedure for installing the BBU and connecting cables in the APM30 cabinet, including connecting power, optical cables, E1 cables, and FE ...



White Paper on Lithium Batteries for Telecom Sites

In recent years, lithium batteries have been widely used as backup power supplies in telecom sites to mitigate unexpected power outages and ensure the continuity of telecom services.



huawei base station

Power Supply Unit (PSU): This provides the necessary electrical power to operate the base station components. It ensures that all parts of the base station have a consistent ...

BTS5900 Hardware Description

Explore the BTS5900 base station hardware, including cabinet components, specifications, and configurations. A comprehensive guide for telecom engineers.





[Uninterrupted remote site power supply](#)

Considering that remote base stations must be highly-integrated, inexpensive, and modest, Huawei has developed its all-on-pole EasySite solution, which integrates the base station, ...

[3900 Series Base Station Product Description.pdf](#)

The document describes the 3900 Series Base Station, including: - It uses a modular design with basic modules including the BBU3900 baseband unit and ...



[HUAWEI DBS3900 INSTALLATION MANUAL Pdf Download](#)

View and Download Huawei DBS3900 installation manual online. Indoor Centralized Rack (ICR) Dual-Mode Base Station. DBS3900 accessories pdf manual download.

[Case Study: A Power Module Is Abnormal](#)

To view power consumption of a CE12800, check the Total Power Available field, which indicates the available power of the switch. Power modules of the ...



BBU5900A Installation Guide (01) (PDF)

BBU5900A Installation Guide (01) (PDF)-EN - Free download as PDF File (.pdf), Text File (.txt) or read online for free.



Huawei Backup Box B0, B1 Installation Guide // Solar& Solar

This guide will take you through the necessary steps to properly install Huawei's innovative backup solution, ensuring your home remains powered during outages.



[Huawei BTS 3900 Hardware Structure PDF](#)

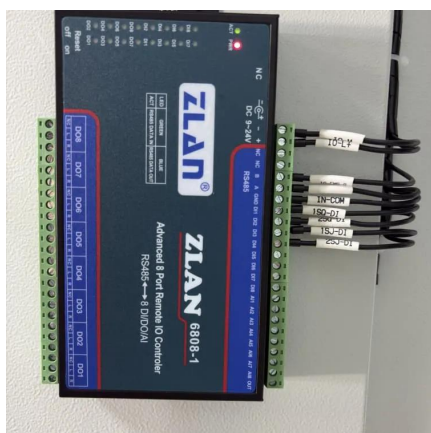
The document describes the hardware structure and components of the Huawei BTS3900 base station system. The key points are: - The BTS3900 system ...





[HUAWEI BACKUP BOX-B0 QUICK MANUAL Pdf ...](#)

Page 7 Installing an Output Power Cable for Off-Grid Loads Before installing a cable, open the panel of the Backup Box, route the cable through the off-grid ...



[APM30 Product Description \(V100R004C01\) , PDF](#)

base stations in terms of power distribution, surge protection, installation of the BBU and transmission equipment, layout of the transmission ...

Huawei BTS3900A Installation Guide V1 5 , PDF , Power Supply

The document provides installation instructions for a Huawei BTS3900A mobile base station. It details how to install the various components of the system, including the RF cabinet, battery ...



Wireless_3900_Series_Base_Station_Hardware_Installation.ppt

This document provides instructions for installing Huawei wireless base station hardware. It begins with an overview of wireless network systems and the hardware structure of Huawei's ...



BBU Quick Installation Guide (V100R005C10_04) (PDF)-EN.pdf

The figure shows only installation slots for the main processing board, core network processing board, baseband processing board, fan module, and power module in the ...



Contact Us

For catalog requests, pricing, or partnerships, please visit:
<https://talbert.co.za>