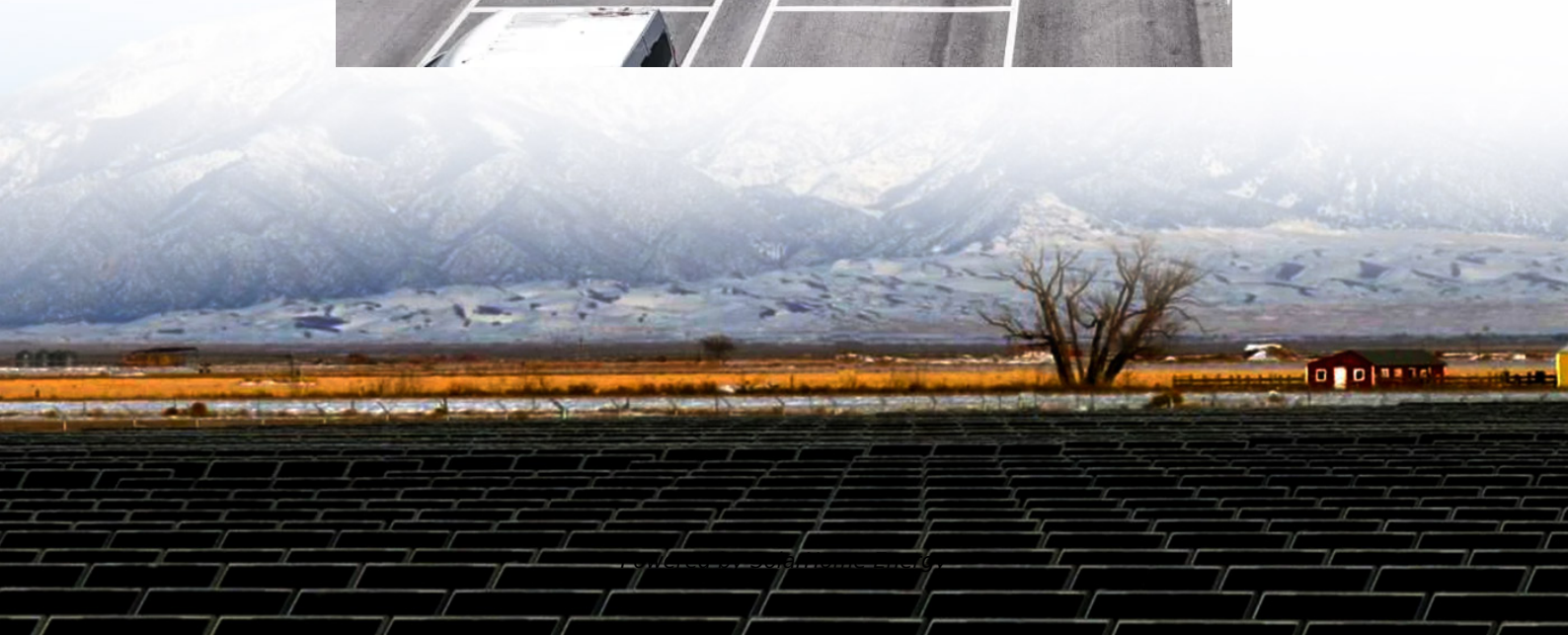


Huawei Mobile Small Base Station Power Settings





Overview

What is a Huawei base station?

Let's dive into a technical explanation. A base station, also known as an eNodeB (for 4G LTE) or gNodeB (for 5G NR) in Huawei's terminology, is a piece of equipment that facilitates wireless communication between user equipment (UE) like smartphones, tablets, and IoT devices, and the core network of the telecommunications provider.

How do I Optimize my Huawei battery?

For advanced users, Huawei's battery optimization settings allow scheduling power-saving periods. Configure "Off-Peak Charging" (Settings > Battery > Charging Settings) to delay full charging until morning, reducing lithium-ion degradation. Pair this with "Scheduled Power Saving" to automatically restrict background processes during inactive hours.

How to extend battery life on Huawei devices?

To extend battery life on Huawei devices, enable Power Saving Mode, limit background app activity via App Launch Management, reduce screen brightness, and disable unused features like GPS or Bluetooth. Regularly update EMUI/HarmonyOS for optimized power algorithms and monitor battery health in Settings > Battery > More Battery Settings.

What is battery protection mode for Huawei phones?

For travelers, enable "Battery Protection Mode" when using third-party chargers - this throttles charging speed by 25% to prevent voltage spikes. Always store devices at 50% charge if unused for extended periods. What Are the Best Power-Saving Modes for Huawei Phones?

.

How do I Optimize my phone's battery usage?



Go to Settings > Battery (or Optimizer >) and touch Optimize battery usage. Your phone will automatically analyze the current power consumption issues, optimize certain settings, and recommend other setting optimizations. Helpful or not?

Learn about 'Power Management'.

What systems does Huawei offer?

Huawei provides comprehensive management and control systems, such as Huawei's U2000 or Huawei's Cloud BTS. These systems enable operators to monitor, configure, and manage base stations remotely, ensuring optimal network performance and reliability.



Huawei Mobile Small Base Station Power Settings



[Battery Settings , HUAWEI Support Global](#)

Go to Settings > Battery (or Optimizer >), touch Battery percentage, and choose to display the battery percentage, either inside or outside of the battery icon in the status bar.

[Minimizing base stations carbon footprint](#)

In addition, when mobile traffic is low, some frequency bands of base stations can be temporarily disabled. This conserves energy without compromising network performance or user ...



Digitalizing site power for green connectivity and ...

This approach opens up base station resources, transforming them from communication stations into social stations that maximally utilize resources. In ...

[Enabling Smart Charge and Smart Battery Capacity](#)

Learn about 'Enabling Smart Charge and Smart Battery Capacity'. Find all usage guide,



troubleshooting tips and resources for your HUAWEI product.

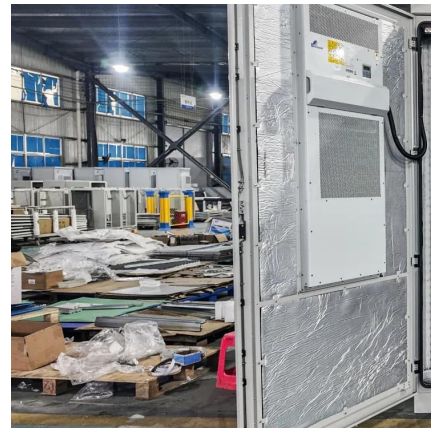


[S5700 and S6700 V200R022C00 Configuration Guide](#)

To check the default antenna gains of radios on different AP types, run the display ap-type { id type-id , type ap-type } command. The antenna gain is the ratio of the power density produced ...

Huawei will launch lowest power consumption 5G ...

Today, Huawei will have a new "0 Bit 0 Watt" 5G network base station next month, which could standby at the lowest power consumption of ...



STS

Figure 5-6 Connecting the AC output power cable (multiple transformer stations cascaded) The cable room of the load switch cabinet supports the access of two rows of cables.



Predictive Modelling of Base Station Energy ...

The increasing demand for wireless communication services has led to a significant growth in the number of base stations, resulting in a substantial increase in energy consumption.

...



Enabling Smart Charge and Smart Battery Capacity

Learn about 'Enabling Smart Charge and Smart Battery Capacity'. Find all usage guide, troubleshooting tips and resources for your HUAWEI product.

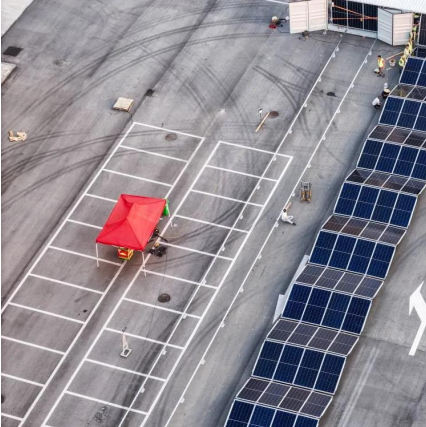
huawei base station

A Huawei base station is a critical component in modern telecommunications networks, specifically in cellular networks like 4G LTE and 5G NR. Let's dive into a technical ...



5G Energy Efficiency Overview

The new strategies should not only focus on wireless base stations, which consumes most of the power, but it should also take into consideration the other power consumption elements for ...



Power Management , HUAWEI Support Global

Your phone will automatically analyze the current power consumption issues, optimize certain settings, and recommend other setting optimizations. Helpful or not? Learn about 'Power ...



HUAWEI 4G CPE 5s

HUAWEI 4G CPE 5s with boarder signal coverage powered by HPUE,offers fast speed Wi-Fi and stable connection for up to 32 devices, featuring plug and ...

Huawei will launch lowest power consumption 5G base station, ...

Today, Huawei will have a new "0 Bit 0 Watt" 5G network base station next month, which could standby at the lowest power consumption of 5W equal to a light bulb.



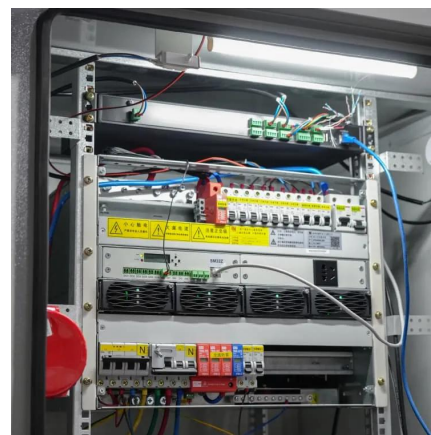


Base Station Operation Increases the Efficiency of Network

These results indicate that base station operation can help operators efficiently build networks and effectively shorten the ROI period. Base Station Operation Has a Bright Future According to ...

5G Small Cell Basics: Types, Advantages, and Manufacturers

This page provides a comprehensive overview of 5G small cells, covering their types, advantages, and popular manufacturers. Introduction Traditional cellular networks rely on high-power base ...



How to Optimize Battery Settings on Your Huawei Device

To extend battery life on Huawei devices, enable Power Saving Mode, limit background app activity via App Launch Management, reduce screen brightness, and disable ...

Inside a Mobile Phone Amplifier! Huawei RRU3908 1800MHz ...

The Huawei RRU3908 is an outdoor Radio Base Station with one to four carriers and one to six sectors at 20/40 Watt RF output power per carrier. Up/Downconversion explained: o Ericsson



[Huawei Base Station Knowledge Base & FAQ-Huawei](#)

Listings 0-20 (out of 0) Here are the troubleshooting cases and FAQs for Huawei Base Station products. Get your solutions if you have met some problems.



Innovative Solutions for Efficient huawei base station in Global ...

Huawei base station is essential in setting up a good mobile network connection. Whether for commercial or government use, a stable and reliable communication network is required in this ...



Inside a Mobile Phone Amplifier! Huawei RRU3908 1800MHz Base Station

The Huawei RRU3908 is an outdoor Radio Base Station with one to four carriers and one to six sectors at 20/40 Watt RF output power per carrier. Up/Downconversion explained: o Ericsson





Uninterrupted remote site power supply

Considering that remote base stations must be highly-integrated, inexpensive, and modest, Huawei has developed its all-on-pole EasySite solution, which integrates the base station, ...



DBS5900 Distributed Base Stations -- Huawei Enterprise

The DBS5900 adopts a modular structure, with the baseband unit BBU and remote radio unit RRU deployed separately. The DBS5900 has the characteristics of small size, low power ...

Case Study: China Tower & Huawei

Intelligent Peak Staggering Maximizes Site Battery Value, Reducing Electricity Cost by 17.1% As the deployment of 5G continues, the energy consumption of ...



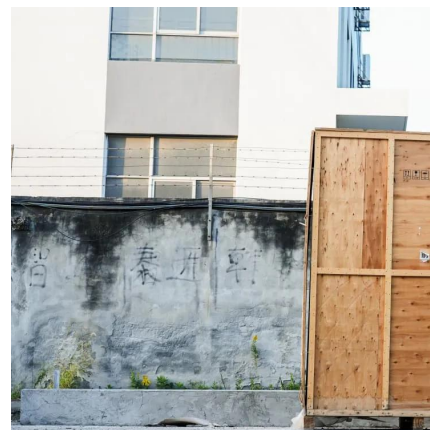
3900 Series Base Station Product Description V1

These base stations can work in multi-mode due to their cutting-edge modular design. They also have broad bandwidth and are eco-friendly and easily upgradeable. Specifically, 3900 series ...



Huawei Technologies CDMA Base Station : User's Manual

Transmit power (measured value at the antenna port of the cabinet) The maximum average transmit power is 25 W.



[Power Management , HUAWEI Support Global](#)

Go to Settings > Battery (or Optimizer >) and touch Optimize battery usage. Your phone will automatically analyze the current power consumption issues, optimize certain settings, and ...

Contact Us

For catalog requests, pricing, or partnerships, please visit:
<https://talbert.co.za>