

How to do lightning protection for communication base station inverter





Overview

Insulate the drain/shield wire that is not connected to protect against incidental contact with chassis or other live components. Connect the drain/shield wires from the RS485 cable with an insulated crimp splice.



How to do lightning protection for communication base station inve



Lightning introduction pathways and protection measures for

When overhead pipelines are struck by lightning, overvoltage is introduced into the base station room, which is likely to burn out the communication equipment of the base station.

Power Inverter Problems: 5 Most Frequent Issues and ...

Struggling with inverter problems like overheating or sudden shutdowns? Discover viable fixes to common problems and keep your energy ...



How to Prevent Your Inverter from Thunderstrikes from PV Panels

Protecting your inverter from lightning strikes is vital for the longevity and efficiency of your PV system. By implementing surge protection devices, ensuring proper grounding, ...



Telecom Base Station , Outdoor Electronics Vents

The mobile communication base station system is mainly composed of base station controller,



transceiver, base station antennas, RF devices, base station power, transmission lines, anti ...



How to Prevent Your Inverter from Thunderstrikes ...

Protecting your inverter from lightning strikes is vital for the longevity and efficiency of your PV system. By implementing surge protection ...

Basics of Lightning Protection for Communication Towers

For lightning protection best resources are Polyphasers book the ARRL Handbook along with the book "Grounding and Bonding for the Radio Amateur". The ARRL Handbook contains good ...



How to Integrate a Surge Protector with an Inverter?

Surge Protection for Correct and Incorrect Connection to Inverters Equipped with String Protectors To connect a surge protector to an inverter ...



LIGHTNING PROTECTION SOLUTION FOR BASE ...

Corresponding signal surge protectors should be installed on the communication interfaces. All the surge protectors should be well grounded.



What is an Emergency Lighting Inverter?

No matter the battery capacity, an inverter provides several advantages over other systems. Learn more about how inverters support emergency lighting ...

Inverter Best Installation Practices to Minimize Lightning ...

Inverter Best Installation Practices to Minimize Lightning Vulnerability Background: A direct lightning strike is nearly impossible for electronic equipment to survive. Understanding the ...



Lightning and Surge Protection for Communication Station

Install lightning rods, grounding, surge protectors, shielding, and follow standards for effective communication station protection.



Lightning protection and grounding scheme for communication base station

Because the environment and construction methods of each base station are different, the lightning protection and grounding of the base station cannot be generalized. Lightning ...



Lightning protection and grounding scheme for communication ...

Because the environment and construction methods of each base station are different, the lightning protection and grounding of the base station cannot be generalized. Lightning ...

Protecting HF base antenna from lightning and not making it worse

Hi guys, Note: Below I'm speaking of CB but the question applies to ham installs. I'm not looking for comments about the CB itself but about the base setup and its protection against lightning.

...





How to optimize telecom inverters for communication networks

Optimize telecom converter inverters for reliable communication networks. Learn how to enhance efficiency, scalability, and performance for seamless integration.

Detailed explanation of inverter communication method

Usually, each inverter is equipped with a GPRS/4G data collection module. Through the built-in SIM card, the collected data is uploaded to the inverter ...

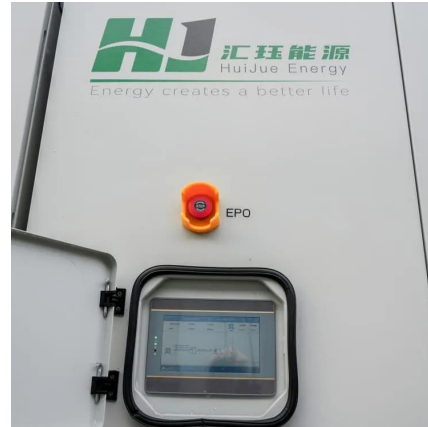


Surge Protection for Cell Sites

Lightning Surge Protection Device SPD for Cell Sites, 5G Telecom Base Station, Wireless Radio Communication Towers

Overvoltage Protection

The internal lightning protection provides equipotential bonding between metal installations and cables within the system. Metal and conductive system parts, e.g. water pipes, are connected ...



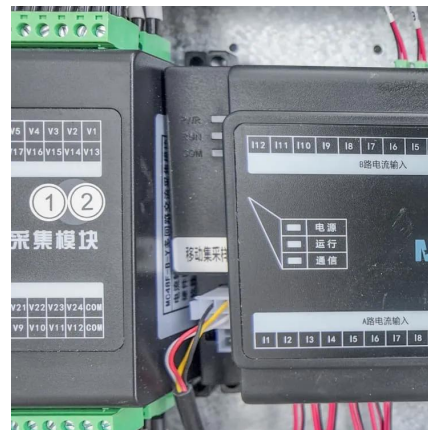
Lightning Protection for Antennas, Towers, and ...

Lightning Protection for Antennas, Towers, and Structures Every year, lightning causes irreversible damage, injuring approx 1,000 people annually. Antennas ...



15 important functions of solar inverter protection - TYCORUN

The inverter should have inverter protection against lightning, and the technical indicators of its lightning inverter protection device should be able to ensure the absorption of ...



[How to protect inverter from lightning?](#)

If you encounter a thunderstorm, in order to prevent your solar system, including the inverter, from being hit by lightning, you need to disconnect the solar panels from the ...





Grounding and Bonding For Home & Mobile HF Stations

Grounding and Bonding for the Radio Amateur Covers AC wiring, lightning protection, and RF management Reviewed by a number of experts, including the ARRL Lab Numerous examples ...



[Lightning protection design of grid connected ...](#)

Lightning protection is an indispensable part of the entire photovoltaic power station, which is related to the safe and normal operation ...

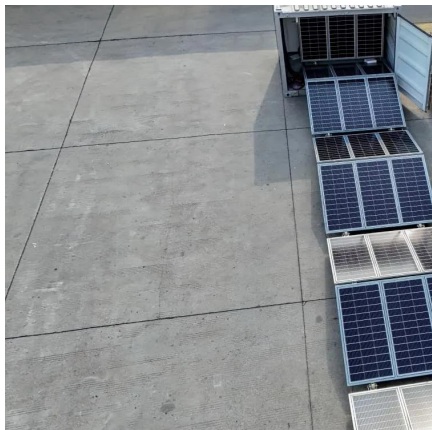
[How Base Station to Be Protected From Lightning](#)

The mobile communication base station prefers the ring type equipotential connection, and it is recommended to use the ring type equipotential connection in accordance ...



Lightning protection solution for telecom communication base stations

The lightning arrester for the RuTian feeder is installed at the connection between the antenna and the feeder to prevent lightning from entering the main equipment of the base ...



Communication Devices for Systems & Platforms

SolarEdge communication devices for optimal performance and monitoring of your solar energy systems. Discover the benefits of our advanced technology.



Lightning protection solution for telecom communication base ...

The lightning arrester for the RuTian feeder is installed at the connection between the antenna and the feeder to prevent lightning from entering the main equipment of the base ...

LIGHTNING PROTECTION SOLUTION FOR BASE STATION

Corresponding signal surge protectors should be installed on the communication interfaces. All the surge protectors should be well grounded.





Contact Us

For catalog requests, pricing, or partnerships, please visit:
<https://talbert.co.za>