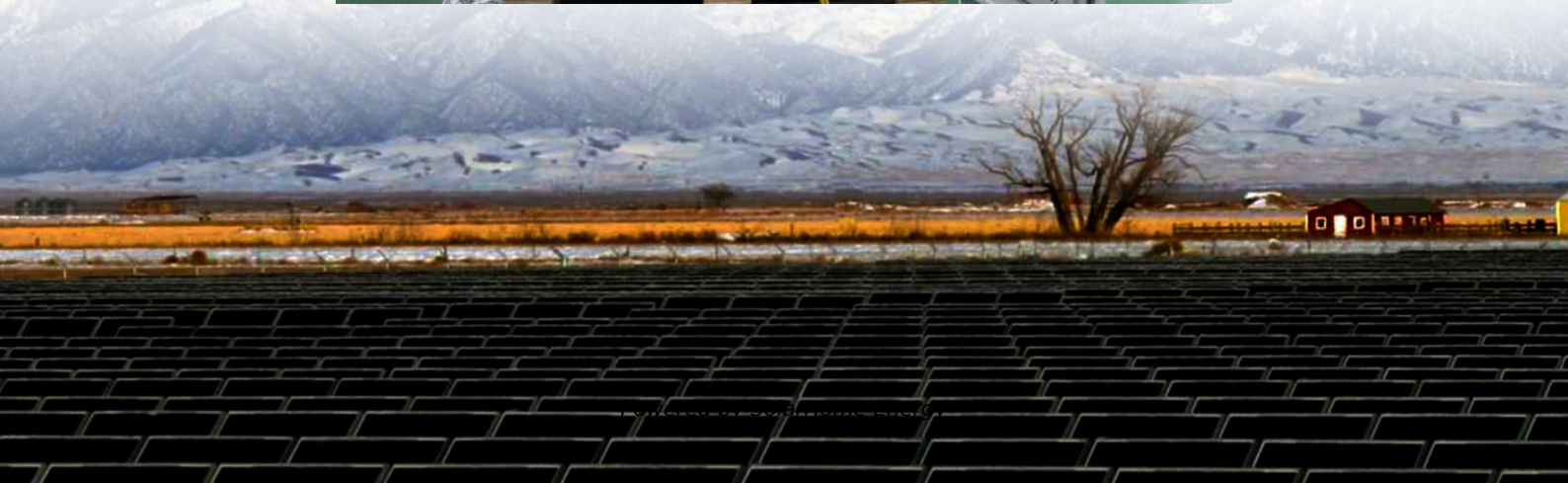


How to connect a telecommunications base station project





Overview

Why are base stations important in cellular communication?

Base stations are important in the cellular communication as it facilitate seamless communication between mobile devices and the network communication. The demand for efficient data transmission are increased as we are advancing towards new technologies such as 5G and other data intensive applications.

What is a base station?

What is Base Station?

A base station represents an access point for a wireless device to communicate within its coverage area. It usually connects the device to other networks or devices through a dedicated high bandwidth wire of fiber optic connection. Base stations typically have a transceiver, capable of sending and receiving wireless signals;.

What can you do with a base station?

There's plenty of fun things you could achieve with such a base station: reverse-engineering of proprietary technology, security research, and probing for vulnerabilities through WWAN interfaces rarely considered as an attack surface. Maybe you could even set up your own cell network — if you ever go sailing in neutral waters, that is.

What are the properties of a base station?

Here are some essential properties: Capacity: Capacity of a base station is its capability to handle a given number of simultaneous connections or users. Coverage Area: The coverage area is a base station is that geographical area within which mobile devices can maintain a stable connection with the base station.

What are the components of a base station?



Power Supply: The power source provides the electrical energy to base station elements. It often features auxiliary power supply mechanisms that guarantee operation in case of lost or interrupted electricity, during blackouts. **Baseband Processor:** The baseband processor is responsible for the processing of the digital signals.

What are the different types of base stations?

Some basic types of base stations are as follows: Macro-base stations are tall towers ranging from 50 to 200 feet in height, placed at strategic locations to provide maximum coverage in a given area. Those are equipped with large towers and antennas that transmit and receive radio signals from wireless devices.



How to connect a telecommunications base station project

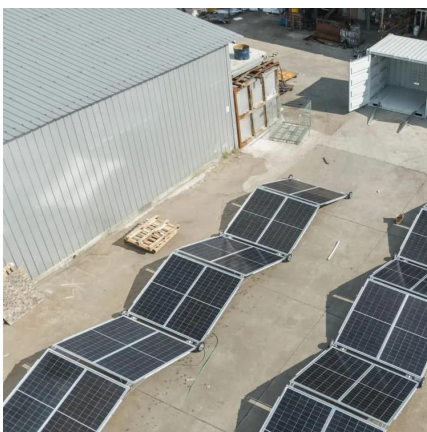
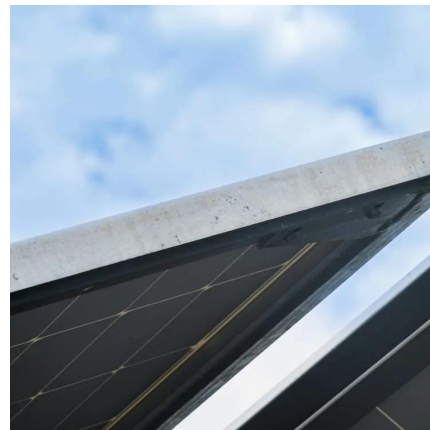


[Telecom Base Station Materials: A 3D Walkthrough](#)

Here at Sanyuan, we can offer you a one-stop solution for cable installation, waterproofing, lightning protection, and other base station materials.

Building a Telecom Cell Site from Start to Finish: A

Not even close. Let's take you on a behind-the-scenes journey of how a telecom cell site is built--from the first handshake to the final signal ...



Telecommunications Field Engineer: Base Station Installation

In this article, we explore the intricate process of base station installation, discuss the evolving role of the Telecommunications Field Engineer, and examine how Business Intelligence (BI) ...

[BBU-Base Band Unit in Telecom: Function,Details](#)

BBU also known as base band unit, whose working details and function is to process,



modulate, transfer and exchange signals in telecom.

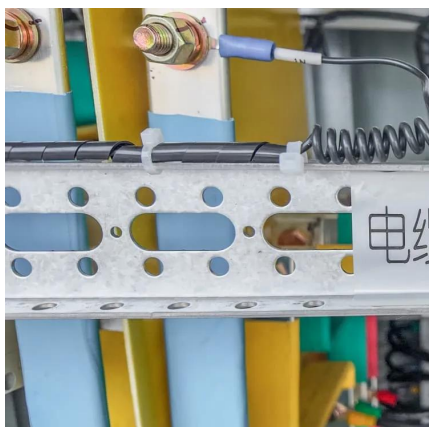


Telecom Base Station Materials: A 3D Walkthrough

Here at Sanyuan, we can offer you a one-stop solution for cable installation, waterproofing, lightning protection, and other base station materials.

Process of Installing a Base Transceiver Station (BTS) ...

Installing a Base Transceiver Station (BTS) is a critical step in building mobile communication networks. Here's a step-by-step guide to the ...



Use of Batteries in the Telecommunications Industry

The Alliance for Telecommunications Industry Solutions is an organization that develops standards and solutions for the ICT (Information and Communications Technology) industry. ...



Base Stations and Cell Towers: The Pillars of Mobile ...

Base stations and cell towers are critical components of cellular communication systems, serving as the infrastructure that supports seamless ...



Base Stations

Backhaul Connection: The backhaul connection links the base station to the core network in the mobile communication system. It provides for the interchange of data between ...

Base Stations: The Core and Future of Telecom Networks

In today's digital era, telecom base stations play a central role in connecting billions of devices. Whether you're in a bustling urban center or a rural area, mobile devices like smartphones and ...



[Telecom Battery Backup System . Sunwoda Energy](#)

A telecom battery backup system is a comprehensive portfolio of energy storage batteries used as backup power for base stations to ensure a reliable and stable power supply.



What is a Cell Site? Why cell sites are essential.

What is a Cell Site? How Do Cell Sites Work? A Cell Site is the backbone of wireless telecommunications and life as we know it. Stop and imagine, where ...



NEW SITE installation in TELECOM

For all those who need to quickly understand what is needed to build a base station, from 3G, 4G, 5G cellular networks. Even for installation company employees, to ...

Base Stations

Backhaul Connection: The backhaul connection links the base station to the core network in the mobile communication system. It provides for ...





[Building Your Own 4G LTE Base Station](#)

Get your hardware ready and strap in, as [MaFrance351] guides you through setting up your own base station, with extreme amounts of detail ...

[Building Your Own 4G LTE Base Station](#)

Get your hardware ready and strap in, as [MaFrance351] guides you through setting up your own base station, with extreme amounts of detail outlining anything you could get ...



Telecom Tower Builds, Planning, Managing, and Executing

Telecom Towers Builds: find out all about the efficient planning and management using Allex , We provide in-depth content on successful project management, resource management, task ...

The Base Station in Wireless Communications: The ...

Base station, also known as BTS (Base Transceiver Station), is a key device in wireless communication systems such as GSM. Equipped with ...



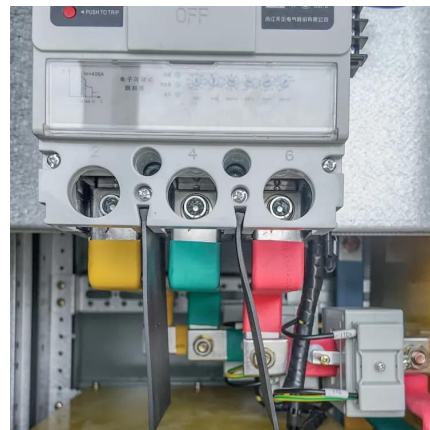
Building a Telecom Cell Site from Start to Finish: A

Not even close. Let's take you on a behind-the-scenes journey of how a telecom cell site is built--from the first handshake to the final signal bars on your phone.



Build Your Own Cellular Network , MIT Technology ...

Just about anybody can create an inexpensive cellular base station that routes calls all over the world.



Antenna Installation Guide , PDF , Compass , Telecommunications ...

This document provides guidelines for installing standard antennas at base stations. It describes the antenna and necessary accessories, including the antenna, support brackets, jumper ...





[Antenna Installation Guide , PDF , Compass](#)

This document provides guidelines for installing standard antennas at base stations. It describes the antenna and necessary accessories, including the ...



Process of Installing a Base Transceiver Station (BTS)

Installing a Base Transceiver Station (BTS) is a critical step in building mobile communication networks. Here's a step-by-step guide to the process:



[Understanding the Basics: What is a Base ...](#)

A Base Transceiver Station (BTS) is a critical component of mobile telecommunication systems. It serves as the primary connection point ...



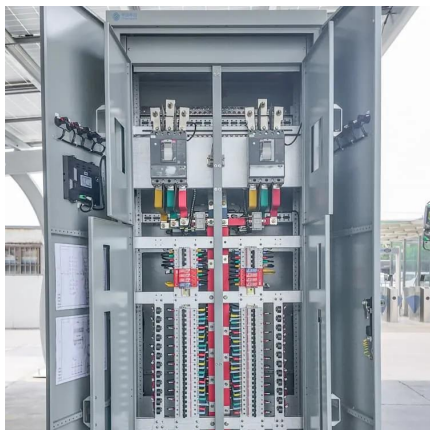
How Do I Connect Steam Base Stations? A Step-by-Step Guide

If you are an avid gamer looking to enhance your virtual reality (VR) gaming experience, then connecting Steam Base Stations is essential. These base stations act as ...



[Press Release:Press Information Bureau](#)

DoT makes significant strides in strengthening the Indian telecom ecosystem
Telecommunication Act, 2023 notified replacing 140-year-old Legacy Telegraph and Wireless ...



Lithium Battery for Telecommunications and Energy ...

Choosing the optimal lithium battery solutions for telecommunications and energy storage requires balancing power capacity, ...

What is a Base Station?

A base station is a common term used in telecommunications for a radio receiver with one or more antennae. While the base station has many ...





[GSM Network Planning and Design: A Complete Guide](#)

To successfully implement and maintain a GSM network, careful planning and design are crucial. This guide will walk you through the essential elements of GSM network ...

[Gateway and Base Station Installation Guide](#)

ng to connect to the Gateway. Base Stations
Base Stations are intended for deployments that extend over a la. e area (such as a city or a large campus). The Base Station includes a ...



Contact Us

For catalog requests, pricing, or partnerships, please visit:
<https://talbert.co.za>