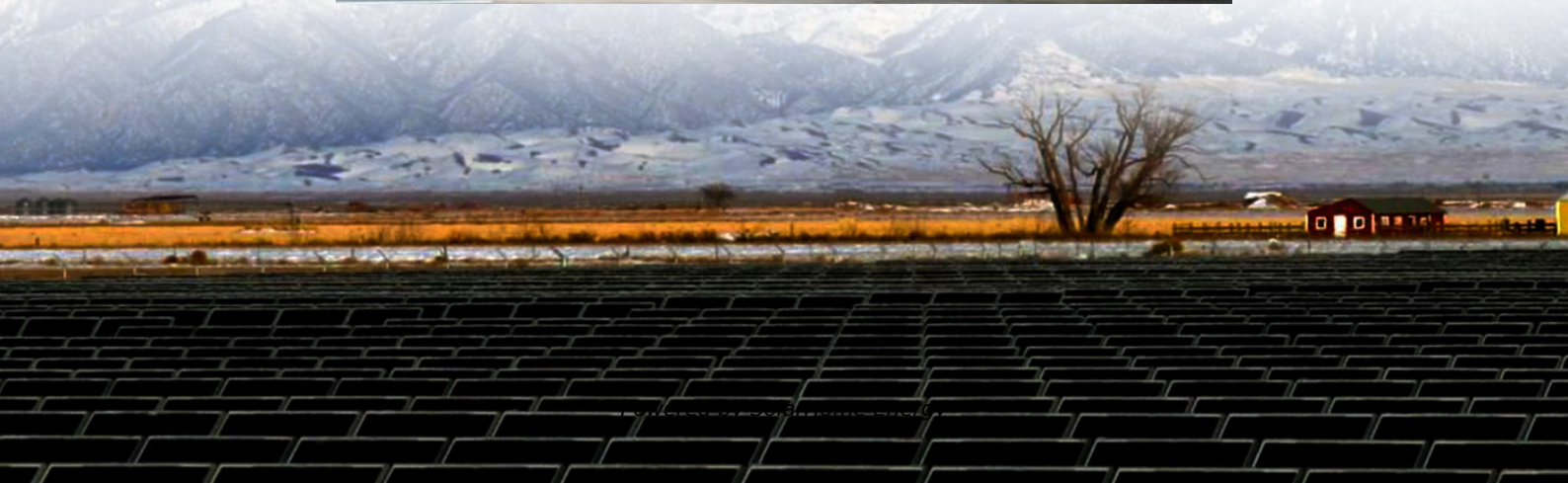


How much voltage does a photovoltaic panel generate in winter





Overview

Generally, in most regions, solar panels can produce approximately 10-30% of their typical yearly output during the winter months. This figure is contingent upon multiple elements, including local solar conditions, tilt, and orientation of the panels. Will solar panels produce electricity in winter?

No, this is not the case. Solar panels will produce electricity even in winter but there will be an average 50% reduction. According to the source solar panels tend to work more efficiently in cool months due to the even flow of electricity throughout the panels.

Is solar panel output winter vs Summer?

Now, let's start exploring solar panel output winter vs summer. Solar production is not the same year-round. Seasonal changes affect the intensity of sunlight, which in turn leads to differentiated output by the solar power system.

How can I maximize my solar output in the winter?

There are a few things you can do to maximize your solar output in the winter: Keep your solar panels clean. Dirt and snow can block sunlight from reaching your solar panels, reducing their output.

How much energy does a solar panel use?

Typically, solar panels are more efficient by a factor of -0.5% per C (note the minus sign). The power rating of a solar panel is measured at 25C. Thus, a 300-watt (W) solar panel is 300W at 25 C. At freezing (0C) that same solar panel is 338 W, and at +40C, the solar panel is 278W.

When do solar panels produce the most energy?

With an increase in intensity, solar panels tend to produce most energy between late morning hours to peak afternoon hours, that is 11:00 am to 04:00 pm. This decreases as evening approaches, and it falls to 0 at night.



This should have helped you understand solar panel output vs time of day.
What is Solar Panel Output Winter Vs Summer?

.

Why do solar panels shift during winter?

During winter, daylight hours shift because every day the sun rises a little late and sets a little earlier than the previous day. This clearly affects the time period for which your solar panels receive sunlight and the average power it produces.



How much voltage does a photovoltaic panel generate in winter



Do Solar Panels Work in Winter?: Unveiling the Truth

Solar panels harness sunlight and convert it into electricity. They contain photovoltaic cells that absorb sunlight and create an electric current. ...

3 Ways to Generate Electricity in Winter with Solar Panels

Discover how solar panels generate electricity in Winter and learn if shorter days and colder weather impact their ability.



Solar Panel Voltage Calculator, Formula, Panel Volts Calculation

The formula to calculate the total voltage of a series-connected solar panel array incorporates the count of panels and the voltage per panel. Solar panel voltage, V_{sp} (V) in volts equals the ...

Can solar panels generate electricity in the winter?

How much electricity do solar panels generate in the winter? Typically, solar panel output



experiences a decline in winter compared to summer, primarily due to shorter days and a ...

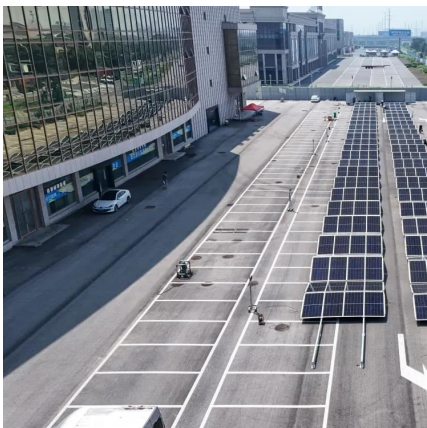


How Much Energy Does A Solar Panel Produce?

Solar panels are quietly transforming rooftops around the world, turning sunlight into electricity and helping homeowners slash utility bills. If ...

How Much Electricity Does Solar Generate In Winter Months

The amount of electricity generated from a solar panel system during the winter months largely depends on factors such as location, weather conditions and the quality of the solar panels used.



Solar Panel Output Winter Vs Summer

Solar panels will produce electricity even in winter but there will be an average 50% reduction. According to the source solar panels tend to work more efficiently in cool months ...



How Much Energy Does A Solar Panel Produce? , EnergySage

A solar panel's output rating, or wattage, is the best indicator of its power production. The amount of electricity your solar panels produce directly impacts your long-term ...

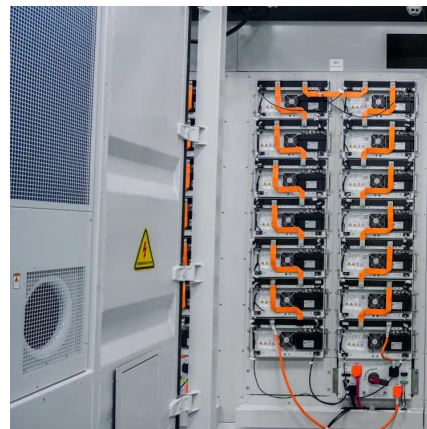


Do solar panels work in winter and how effective are ...

Wondering if solar panels still generate electricity on cold, cloudy or rainy winter days? We answer the top questions about using solar panels in ...

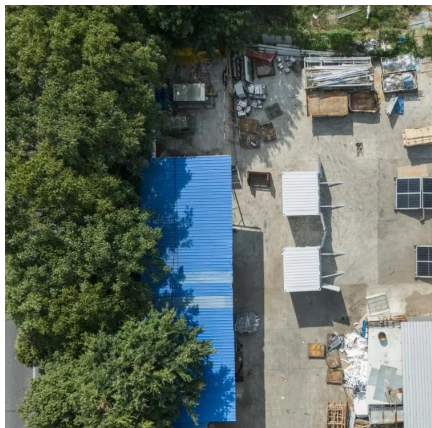
How Much Electricity Does Solar Generate In Winter ...

The amount of electricity generated from a solar panel system during the winter months largely depends on factors such as location, weather conditions and ...



Do Solar Panels Work in Winter? What You Need to ...

Solar panels use the photovoltaic effect to generate electricity by capturing photons from sunlight (not heat). As the temperature climbs above 25°C ...



Can solar panels generate electricity in the winter?

How much electricity do solar panels generate in the winter? Typically, solar panel output experiences a decline in winter compared to summer, primarily ...



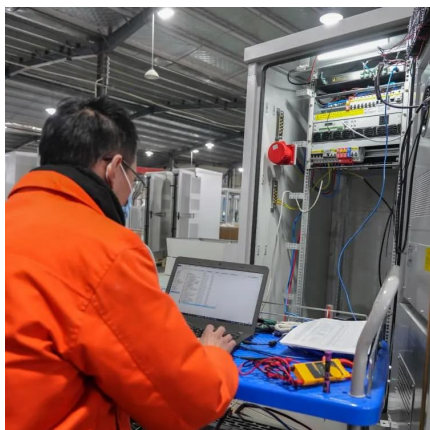
Solar output in the winter: what to expect, and how to optimize it

In general, you can expect your solar output to decrease by 25-50% in the winter compared to the summer. You can reference an expected energy output for the winter months ...

Do solar panels work in winter and at low ...

How much electricity do solar panels generate in winter? As mentioned before, solar panels generate substantially less electricity at the ...





How Much Power Solar Panels Generate in the Winter?

To summarize, the amount of power generated by solar panels in winter depends on their geographic location and the average PSH values for ...

How Many kWh Does a Solar Panel Produce in Ireland?

The amount of solar electricity that solar PV panels can generate in a day depends on several factors, including the size of the panel, the ...



3 Ways to Generate Electricity in Winter with Solar ...

Discover how solar panels generate electricity in Winter and learn if shorter days and colder weather impact their ability.

[Do solar panels work in snow and during winter?](#)

It's a common myth that solar panels don't work during winter. Interestingly, cold temperatures typically improve solar panel output, which means your panels will produce more ...



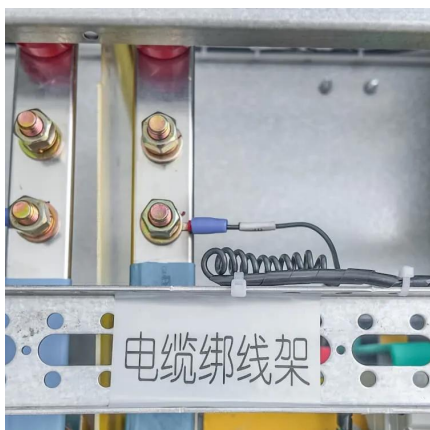
How much electricity does solar power generate in winter

Generally, in most regions, solar panels can produce approximately 10-30% of their typical yearly output during the winter months. This figure is ...



How much electricity does solar power generate in winter

Generally, in most regions, solar panels can produce approximately 10-30% of their typical yearly output during the winter months. This figure is contingent upon multiple ...



How Much Energy Does a Solar Panel Produce in Winter?

During the colder months, the photovoltaic (PV) technology in your solar panel will convert sunlight to power more efficiently. This implies that for each hour of sunlight received during ...



Do solar panels work in winter? ...Output and Efficiency

The lower power output is due to the reduced number of hours of sunlight during a winters day and the sub-optimal angle of the sun. Winter ...

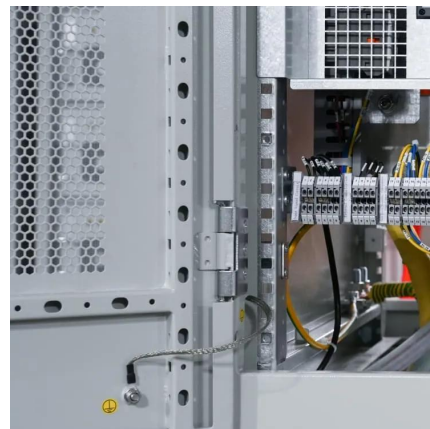


Do solar panels work in snow and during winter?

It's a common myth that solar panels don't work during winter. ...

How Much Electricity Does a Solar Panel Produce?

Discover how much electricity a solar panel produces, including daily, monthly, and yearly kWh outputs. Learn how many kWh and kilowatts solar panels ...



How much electricity do solar panels generate in winter?

Whilst not as efficient in Winter, solar panels will still generate electricity even on cold, cloudy, wet or snowy days in winter.



Do Solar Panels Work in Winter?: Unveiling the Truth

Solar panels harness sunlight and convert it into electricity. They contain photovoltaic cells that absorb sunlight and create an electric current. Even in winter, these ...



How Much Energy Does A Solar Panel Produce? - Renogy US

Is solar power worth it? It starts with understanding how much energy a solar panel actually produces. Uncover the real numbers, calculate your potential savings, and make an informed ...

Solar Panel Output Winter Vs Summer

In general, you can expect your solar output to decrease by 25-50% in the winter compared to the summer. You can reference an expected ...





How Much Power Solar Panels Generate in the Winter?

To summarize, the amount of power generated by solar panels in winter depends on their geographic location and the average PSH values for that area. By using insolation ...

Do Solar Panels Work on Cloudy Days? Factors Affecting Solar Panel

Cloudy weather doesn't mean zero power. But how efficient are solar panels on cloudy days? Explore the key factors that affect solar panel efficiency.



How Well Do Solar Panels Work in Winter? Solar Panels in Winter

Australia's diverse climate presents unique challenges for solar panel efficiency, particularly during the winter months. As a nation highly reliant on solar energy, understanding ...

Contact Us

For catalog requests, pricing, or partnerships, please visit:
<https://talbert.co.za>