

# How much area is needed per kilowatt of solar energy





## Overview

---

Typical solar panels range from 250W to 400W, translating to an area of about 1.6 to 2.2 square meters per panel, leading to a total space requirement of around 5 to 10 square meters for 1 kW. 3.How much space does a kilowatt solar panel system need?

The area required for each kilowatt (kW) solar panel system is approximately 5 to 10 square meters, depending on the panel efficiency and wattage. 1. The efficiency of the solar panels influences the space needed significantly, with higher efficiency panels requiring less area per unit of power generated. 2.

How much space does a 1 KW solar system take up?

On average, a 1 kW system requires 80-100 square feet (7.5 to 9.5 square meters). High-efficiency panels take up less space but may come at a higher upfront cost. Factors like roof shape, tilt, and panel spacing affect the total area needed.

How many square meters is a kilowatt solar panel system?

The area required for each kilowatt (kW) solar panel system is approximately 5 to 10 square meters, depending on the panel efficiency and wattage. 1. The effici.

How much land do you need for solar panels?

The amount of land needed for solar panels depends on your system size, though generally at least 300 sq ft is required. In some areas, a security fence must be installed around ground-mounted solar panels, which can increase your project's total footprint.

How many solar panels do I Need?

To calculate the number of solar panels you need, divide your system's total capacity by the wattage of each panel. As the average home solar panel is about 400 W, an 8.5 kW system would consist of approximately 21.25 panels.



Rounding up, a 22-panel installation may be best. Step 5: Estimate your required roof space for solar.

How much space do you need for a solar system?

Area required = 5 kW × 80 square feet = 400 square feet (37 square meters). Thus, your total space requirement for a solar system depends heavily on the type of panels you choose. Understanding the area per kW of solar panels helps you make informed decisions about:



## How much area is needed per kilowatt of solar energy

---



### [How Much Space Do You Need for a Solar Panel ...](#)

Solar panels come in various sizes and output capacities, but a standard panel may have an energy rating of around 400 Watts per hour and produce ...

### **Size your solar system**

The system size depends on the number of solar panels and the rated capacity of the panels. System size is measured in kilowatts (kW). One kilowatt (1 kW) = 1000 Watts. For example, a ...



### **Solar Sizing**

Solar systems are rated by their power output in kilowatts (kW). As a rule of thumb, each kilowatt of solar array takes about 100 square feet and produces about 1,100 kWh per year. Systems ...

### **How Much Space Do You Need for a Solar Panel System?**

Solar panels come in various sizes and output capacities, but a standard panel may have an



energy rating of around 400 Watts per hour and produce between 1.5 kWh and 2 kWh per day ...



## How Much Roof Space Is Needed for Your Solar Panels?

Solar panels come in varying wattages (often about 300-400 W for residential panels today), but a typical panel is about 17 to 21 square feet in size. Each kilowatt of solar ...

## How many square meters of space is required per kw solar panel?

Typical solar panels range from 250W to 400W, translating to an area of about 1.6 to 2.2 square meters per panel, leading to a total space requirement of around 5 to 10 square ...



## How to Calculate Solar Panel kWh

How to Calculate Solar Panel kWh: To find the power in kWh, consider panel size, efficiency, and the output per square meter of panels.





## How to Calculate the Surface Area Required by Solar Panels

How can you do a rough estimate of the area required by the solar panels? Here is a quick and easy way to go about it. Lets assume that you want to install 10 solar panels rated ...



## [How Much kW is Required for a House in India](#)

Solar energy is a renewable source of energy that has been very popular nowadays. Sunlight is available in abundance in our country and thankfully, we have the ...

## [Essential Guide to Solar Farm Land Requirements](#)

In terms of area needed, generally speaking, about 100 square feet is typically required per kilowatt (kW) of solar panels. That means that ...



## Solar Calculator

Calculate how much power you need with these solar calculators to estimate the size and the cost of the solar panel array needed for your home energy usage.



## Calculation of total area required for solar panel installation

Calculate the total solar panel installation area with precision for optimal design and efficient energy output.

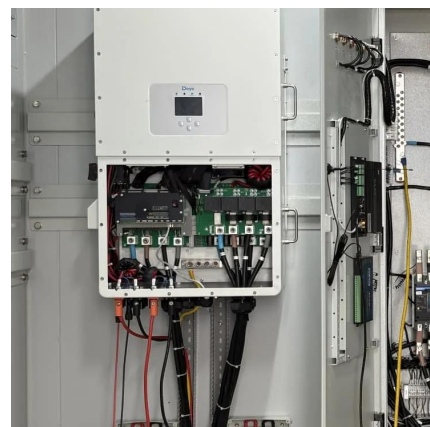


## How much area is required for a 1 kW rooftop solar ...

Choose the clean and renewable form of energy that is solar energy and do your bit for nature. Solar energy also gives you immense ...

### [area required per kW of solar panels](#)

On average, a 1 kW solar panel system will require between 80 to 100 square feet (7.5 to 9.5 square meters). This means, for every kilowatt of ...



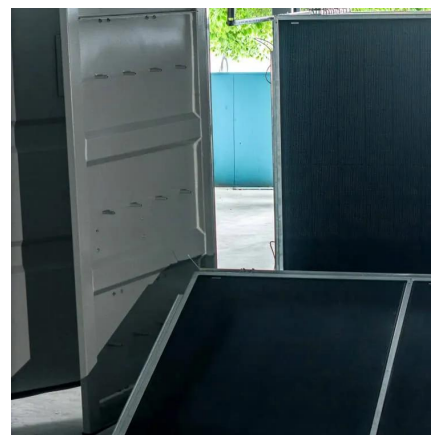


## Total Area Required for Solar Panel Installation ...

Calculate the total area needed for your solar panel installation quickly and accurately with our easy-to-use solar panel area calculator.

### [Solar Panel Square Footage Calculator](#)

Once you have your annual energy down to the tee, you need to find out how much energy a solar panel will produce in your area or location. To do this you can look up the average sun ...



## Solar Power Roof Area Calculator , Roof Space Needed for a Solar ...

Interpret the results by understanding that the calculated area is the minimum space needed to achieve your desired power output. Users should avoid common mistakes ...

## Total Area Required for Solar Panel Installation Calculator

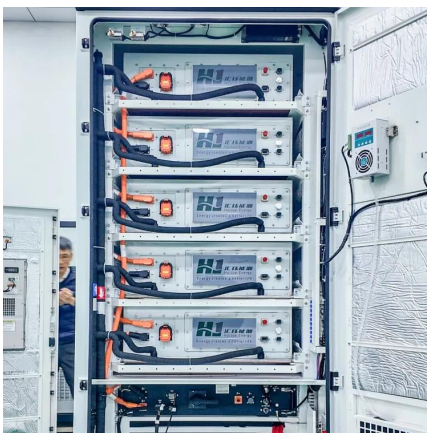
Calculate the total area needed for your solar panel installation quickly and accurately with our easy-to-use solar panel area calculator.





## How much solar energy is needed per square meter? , NenPower

Understanding solar insolation is fundamental in calculating the energy needed per square meter. Defined as the average solar radiation energy received on a given surface area ...



## Land-Use Requirements for Solar Power Plants in the United ...

One concern regarding large-scale deployment of solar energy is its potentially significant land use. Efforts have been made to understand solar land use estimates from the literature ...



## [How Much Area Required for 1kW Solar Plant?](#)

Discover the space needed for a 1kW solar plant. Learn key factors, panel efficiency, and ideal setup to maximize solar energy output.





## Land Requirements for Utility-Scale PV: An Empirical Update ...

This research was supported by funding from the U.S. Department of Energy, Office of Energy Efficiency and Renewable Energy, Solar Energy Technologies Office Summary of open ...



## How Many Solar Panels Per Acre?

Discover how many solar panels per acre of land and factors influencing the number. Learn about solar panel size.

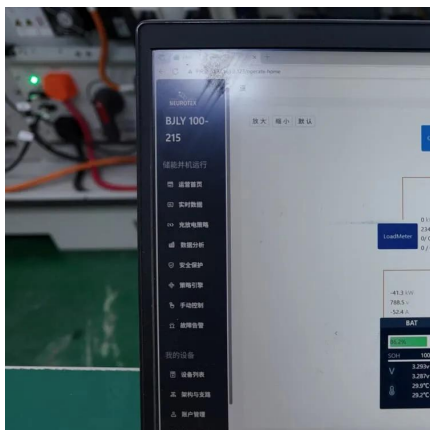
## How to Calculate the Surface Area Required by Solar ...

How can you do a rough estimate of the area required by the solar panels? Here is a quick and easy way to go about it. Lets assume that you ...



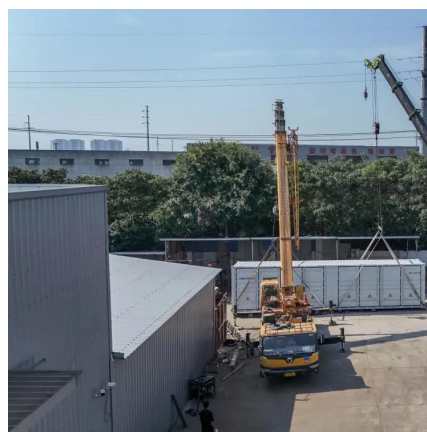
## [How Much Area Required for 3kw Solar System](#)

Are you exploring solar energy and wondering how much area required for 3kW solar system? Whether you're a homeowner, business owner, or developer, understanding space needs, ...



## How much area is needed for solar panel installation

By dividing your average daily electricity use by your property's peak sun hours (PSH), you can estimate your approximate solar energy system size. If your home consumes ...

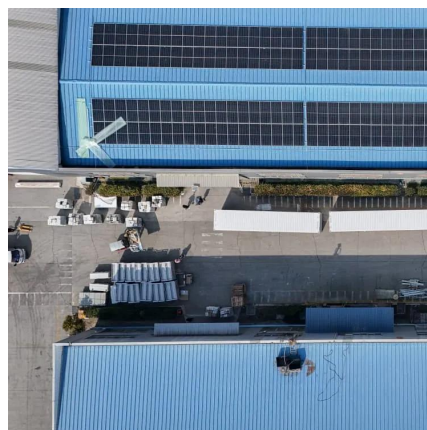


### area required per kW of solar panels

On average, a 1 kW solar panel system will require between 80 to 100 square feet (7.5 to 9.5 square meters). This means, for every kilowatt of power you plan to generate, you'll ...

### Solar Power Roof Area Calculator , Roof Space ...

Interpret the results by understanding that the calculated area is the minimum space needed to achieve your desired power output. Users should ...





## How much area is needed for solar panel installation

By dividing your average daily electricity use by your property's peak sun hours (PSH), you can estimate your approximate solar energy ...

## How much square area is needed for 3kw solar power ...

Solar insolation, measured in kilowatt-hours per square meter per day (kWh/m<sup>2</sup>/day), quantifies the amount of solar energy received in a specific ...



## Contact Us

---

For catalog requests, pricing, or partnerships, please visit:  
<https://talbert.co.za>