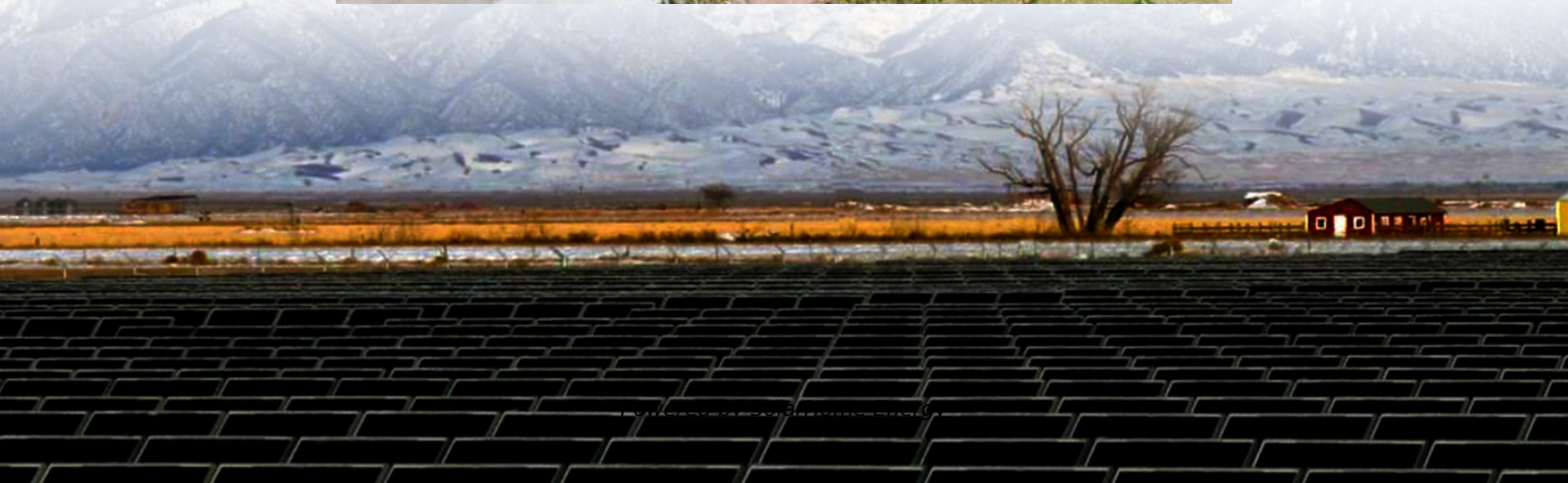


How much area does photovoltaic solar panels occupy





Overview

A typical home solar panel is about 3 feet wide by 5.5 feet long, occupying an area of roughly 17.5 square feet (sq ft). On average, the amount of required roof space for a set of home solar panels is between 300 sq ft and 500 sq ft total. How many square feet does a home solar panel occupy?

A typical home solar panel is about 3 feet wide by 5.5 feet long, occupying an area of roughly 17.5 square feet (sq ft). On average, the amount of required roof space for a set of home solar panels is between 300 sq ft and 500 sq ft total.

How much space do solar panels take up?

Residential solar panels usually take up areas of less than 20 sq ft each, and microinverters can help you add efficient, energy-generating capacity across all the usable installation space on your roof or property. How much land do solar panels need?

.

How much roof space do solar panels need?

On average, the amount of required roof space for a set of home solar panels is between 300 sq ft and 500 sq ft total. When looking into a system for your home, the amount of required roof space will be dictated by the number of solar panels you plan to install. However, limited roof space can also limit the potential size of your installation.

How much land do you need for solar panels?

The amount of land needed for solar panels depends on your system size, though generally at least 300 sq ft is required. In some areas, a security fence must be installed around ground-mounted solar panels, which can increase your project's total footprint.

How to calculate total area required for solar panel installation?



Formulas for Calculating Total Area Required for Solar Panel Installation The fundamental equation for determining the total area required involves calculating the area occupied by the panels and the additional space for structural and operational needs. Core Formula: Where: Step 1: Calculate Number of Panels N .

How many solar panels do I Need?

To calculate the number of solar panels you need, divide your system's total capacity by the wattage of each panel. As the average home solar panel is about 400 W, an 8.5 kW system would consist of approximately 21.25 panels. Rounding up, a 22-panel installation may be best. Step 5: Estimate your required roof space for solar



How much area does photovoltaic solar panels occupy



Just how much space do wind and solar plants take up?

Solar photovoltaic (PV) facilities require up to 75 times the land area." It's simply the nature of the science and engineering behind wind and solar plants that ...

Solar Panel Sizing and Design

Tesla solar panels are designed to meet customers' energy needs. Learn more about how we size each system for your home.



How Much Roof Space Is Needed for Your Solar Panels?

Solar panels come in varying wattages (often about 300-400 W for residential panels today), but a typical panel is about 17 to 21 square feet in size. Each kilowatt of solar ...

Photovoltaics

Photovoltaics - Calculate Power and Surface Area Calculator for the power per area or area per power of a photovoltaic system and of solar



modules. You ...



How to Calculate the Surface Area Required by Solar ...

You have estimated the size of the solar system that you need and are ready to get the equipment from the market to install it. But wait, are ...



How much area is needed for solar panel installation

A typical home solar panel is about 3 feet wide by 5.5 feet long, occupying an area of roughly 17.5 square feet (sq ft). On average, the amount ...



Calculate the area required for a 500kW solar system

A solar system is sized according to its generating capacity. A 500kW solar system means it can generate electricity at a peak power of ...





How Much Area do I Need?

As a rule of the thumb, 10 square meter area is required to set up a 1 kWp solar panel plant. Accurate area required can vary between 6 square ...



PV FAQs : How much land will PV need to supply our ...

How much land will PV need to supply our electricity? If photovoltaics were a primary energy source, what would the world look like? Would PV collectors cover every square inch of ...

A Guide on Calculating Area Required for Solar Panel Installation

For installing all the solar panels in one row, approximately 1m x 5.56m of space is essential as each solar panel is 1m x 0.556m in size. The results of the calculation of your ...



Total Area Required for Solar Panel Installation Calculator

Calculate the total area needed for your solar panel installation quickly and accurately with our easy-to-use solar panel area calculator.



Solar Calculator (Solar System Sizing)

Select a solar panel power rating This allows our solar calculator to determine how many solar panels your home will need and how much space your overall ...



10 MW Solar Farm: How Much Land Does It Need?

Consequently, to establish a 5 MW solar power plant, one would need approximately 25 acres of available land. This sizeable area ensures that the ...

How much roof space do solar panels occupy? - no43

First, solar panels aren't one-size-fits-all. Most residential panels today measure around 65 inches by 39 inches (roughly 5.4 feet by 3.25 feet), taking up about 18-20 square feet each.



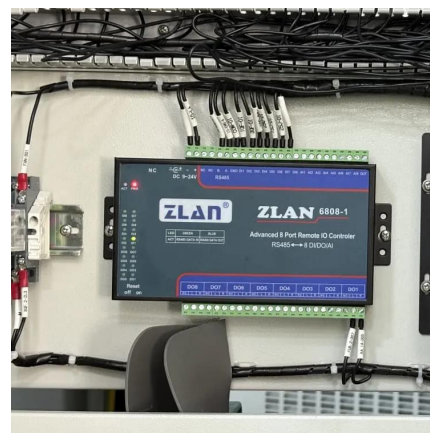


Assessing How Much Land Does Solar Power Need ...

Key considerations include technology type, solar panel efficiency, and geographic conditions. Different technologies, such as photovoltaic (PV) ...

How much area does the solar panel have? , NenPower

The area covered by a solar panel can greatly vary depending on the type and size of the installation. 1. Generally, standard solar panels range between 15 to 2...



How to calculate the surface area required by solar panels

This guide will walk you through the factors influencing solar panel sizing, including energy consumption, panel wattage, roof orientation, and shading. By the end of this ...

How much area does each solar photovoltaic panel have?

To determine the area covered by each solar photovoltaic panel, several factors come into play, including the type of panel, the manufacturer, and its specific capacity.



How much land does a solar panel or photovoltaic panel occupy

A novel method is developed within an integrated assessment model which links socioeconomic, energy, land and climate systems. At 25-80% penetration in the electricity mix ...



How much area does a solar photovoltaic power station occupy

Solar Rooftop Calculator: How Many Solar Panels Can Fit On ... That's why we have created these two very useful resources for everybody who wants to figure out how much solar power ...



[How Much Space Do You Need for a Solar Panel ...](#)

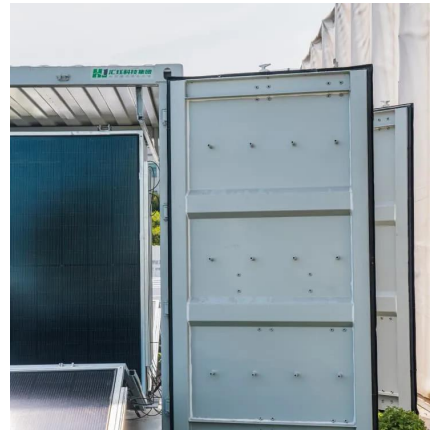
Learn how much space a solar panel system needs based on energy use, panel efficiency, and roof size to maximize savings and performance.





How much area is needed for solar panel installation

A typical home solar panel is about 3 feet wide by 5.5 feet long, occupying an area of roughly 17.5 square feet (sq ft). On average, the amount of required roof space for a set of ...



Total Area Required for Solar Panel Installation ...

Calculate the total area needed for your solar panel installation quickly and accurately with our easy-to-use solar panel area calculator.

How Many Square Meters Is One Solar Panel?

Standard residential panels are around 1.6 meters by 1 meter, allowing efficient coverage of roof space without overwhelming the structure. Commercial Use: Businesses ...



How Much Space Do You Need for a Solar Panel System?

Learn how much space a solar panel system needs based on energy use, panel efficiency, and roof size to maximize savings and performance.



How to Calculate the Surface Area Required by Solar Panels

You have estimated the size of the solar system that you need and are ready to get the equipment from the market to install it. But wait, are you sure you have enough space ...



Solar Panels Sizes and Weights (All Sizes)

Deciding to power your building with solar energy can be quite complicated. Roofs can only withstand so much weight, and it is crucial to ...

A Guide on Calculating Area Required for Solar Panel ...

For installing all the solar panels in one row, approximately 1m x 5.56m of space is essential as each solar panel is 1m x 0.556m in size. The ...





How much area does solar energy installation occupy?

The area occupied by solar energy installations can vary significantly based on several factors, including technology type, capacity, location, and efficiency. ...

Contact Us

For catalog requests, pricing, or partnerships, please visit:
<https://talbert.co.za>