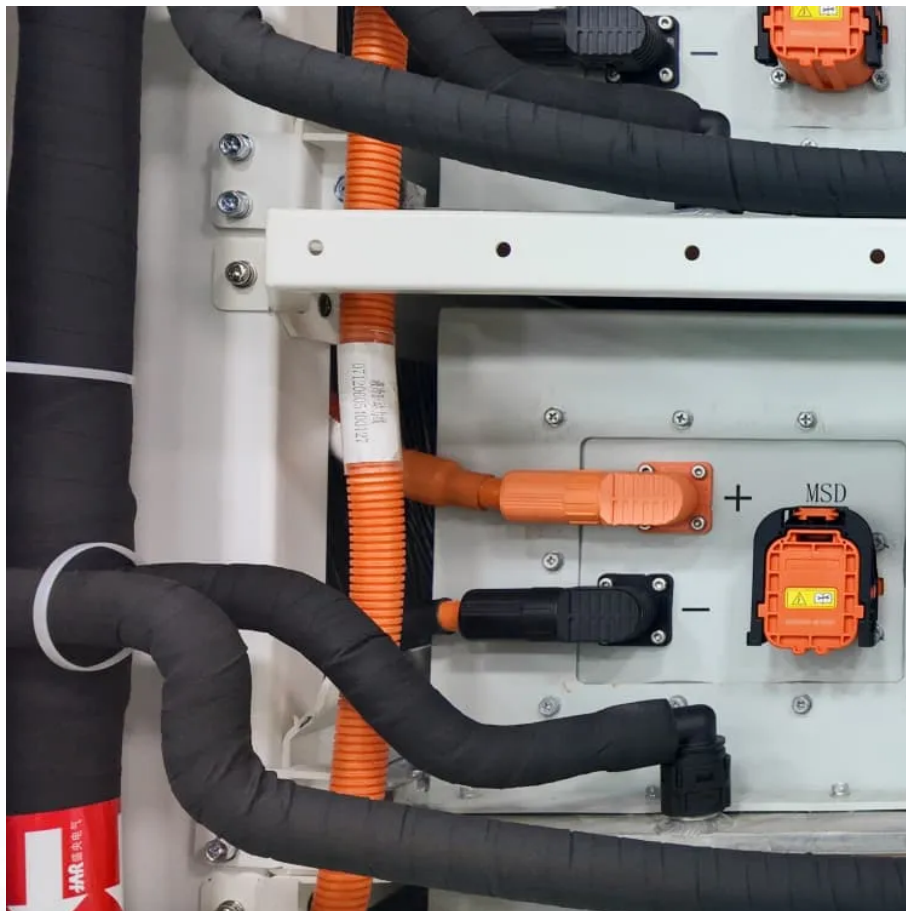


# How many watts does a 3 square meter solar panel hold





## Overview

---

Most common panels generate between 250 to 400 watts per panel, while their space output can be quantified around 150 to 200 watts per square meter. This variance is influenced by the type of panels—monocrystalline panels typically providing better efficiency compared to polycrystalline models. How many Watts Does a solar panel produce per square meter?

On average, a solar panel produces around 150 to 200 watts per square meter. This can vary due to: Example: A 1.7 m<sup>2</sup> panel with 20% efficiency will produce about 340W in full sun. Note: Monocrystalline panels lead in efficiency, making them ideal for rooftops with limited space.

How many watts can a solar panel hold?

If there are enough direct sunshine and peak hours, the capacity is large. Usually, the typical amount can be 1,000 watts of sunlight per square meter of the panel. As we have mentioned before, average domestic solar panels hold a capacity ranging from 1,000 watts to 4,000 watts.

What is a solar power per square meter calculator?

It also includes wiring, inverter, charge controller, and battery bank (if used). A solar power per square meter calculator takes details regarding these factors and then gives the accurate output generated by the solar panel per square meter. After this, it's time to learn about solar panel output calculators.

What is the capacity of a solar panel?

Capacity is also called 'rated output', which stands for the maximum number of electricity that the solar system can generate under ideal conditions. If there are enough direct sunshine and peak hours, the capacity is large. Usually, the typical amount can be 1,000 watts of sunlight per square meter of the panel.

How much solar energy is received per square meter?



The amount of solar intensity received by the solar panels is measured in terms of square per meter. The sunlight received per square meter is termed solar irradiance. As per the recent measurements done by NASA, the average intensity of solar energy that reaches the top atmosphere is about 1,360 watts per square meter.

How many watts can a 400 watt solar panel produce?

A 100-watt panel can produce 100 watts per hour in direct sunlight. A 400-watt panel can generate 400 watts per hour under the same conditions. This doesn't mean they'll produce that amount all day, output varies with weather, shade, and panel orientation. Solar Power Meter Digital Solar Energy Meter Radiation Measuremen.



## How many watts does a 3 square meter solar panel hold

---



### How Much Power (Watts) does a Solar Panel Produce?

They are rated to generate approximately 265 watts (W) of power (in ideal conditions). To calculate the output per square meter, you can use the ...

### Solar Panel Watts Per Square Meter Explained

Learn how to measure solar panel efficiency using solar panel watts per square meter with this comprehensive guide.



### **Standard Solar Panel Sizes And Wattages (100W-500W ...**

To bridge that gap of very useful knowledge needed, we have compared and averaged the sizes of 100-watt to 500-watt solar panels available on the market. The goal here is to get to the ...

### **Solar Panel Wattage Explained: How Many Watts Do ...**

On average, a solar panel produces around 150 to 200 watts per square meter. This can vary due





to: Example: A 1.7 m<sup>2</sup> panel with 20% ...



## Solar Panel Sizes And Wattage , Sizing, Dimensions & Weight

The size or dimensions of the solar panels, measured in height by width, will determine the number of solar panels that will fit on your roof and the wattage of solar panels ...

## How to Understand Solar Panel Watts Per Square Meter

Watts per square meter is a metric used to measure the power output of solar panels relative to their surface area. It represents a solar panel's electricity per square meter ...



## [Solar Power per Square Meter Calculator](#)

As per the recent measurements done by NASA, the average intensity of solar energy that reaches the top atmosphere is about 1,360 watts per square meter. You can ...



### [How many watts per square meter are solar panels?](#)

In a typical scenario, solar panels can produce between 150 and 300 watts per square meter. This variation is largely attributed to several ...

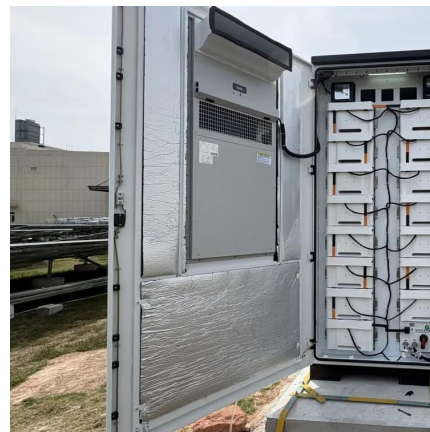


### **How Much Do Solar Panels Weigh? A Complete Guide To Solar Panels ...**

In general, a 60 cell residential solar panel weighs between 35lbs and 50 lbs (16-22 kg) and can produce between 300 and 400 watts of power. However, a 36 cell flexible (thin ...

### [Solar Panel Dimensions Sizes and Wattage](#)

In terms of dimensions, a 300w monocrystalline or polycrystalline solar panel typically has a length of around 1.6 meters and a width of 1 meter. However, these dimensions ...



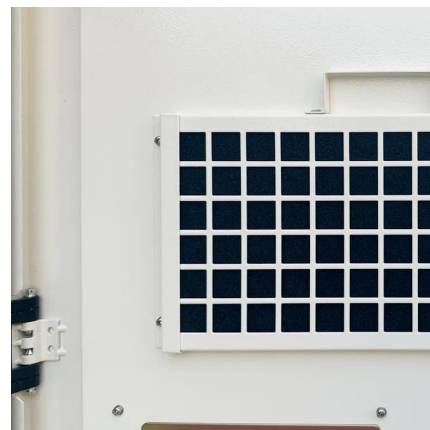
### [Standard Solar Panel Sizes And Wattages \(100W ...](#)

To bridge that gap of very useful knowledge needed, we have compared and averaged the sizes of 100-watt to 500-watt solar panels available on the ...



## Solar Panel Wattage Calculator

Optimal conditions: On a clear, sunny day, with the panel perfectly oriented towards the sun, a 400W panel might generate output close to its rated ...



## [How Much Power \(Watts\) does a Solar Panel Produce?](#)

They are rated to generate approximately 265 watts (W) of power (in ideal conditions). To calculate the output per square meter, you can use the following formula: Also, you have about ...

## [Solar Power per Square Meter Calculator](#)

As per the recent measurements done by NASA, the average intensity of solar energy that reaches the top atmosphere is about 1,360 watts ...





## [How Much Energy Does A Solar Panel Produce?](#)

Learn the solar panel output for major brands and panels, and how it affects the type and size of system you might end up installing.

## **Solar Panel Wattage Calculator**

This solar panel wattage calculator allows you to calculate the recommended solar panel wattage according to the energy consumption of ...



## **POWER PER SQUARE METER CALCULATOR**

Solar power generation efficiency per square meter To measure this efficiency, use solar panel Watts per square meter (W/m). This metric shows how much ...

## **How Much Power Can One Solar Panel Produce? (Full Answer)**

Learn the many factors that affect a solar panel's power output to know how much power one solar panel produces.





## How Much Solar Power Is In One Square Kilometer Muller

5 days ago · How Much Solar Energy Is Received Per Square Meter? The intensity of solar energy received by solar panels is quantified in watts per square meter, termed solar ...



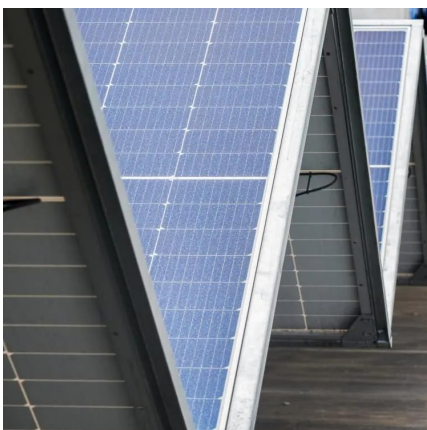
## [How Many Watts Per Square Foot Of Solar Panel?](#)

This means that for every square meter of solar panel, you can expect to generate approximately 150 watts of power. If you convert this to square feet, that works out to 15 watts ...



## Solar Panel Wattage Explained: How Many Watts Do You Need?

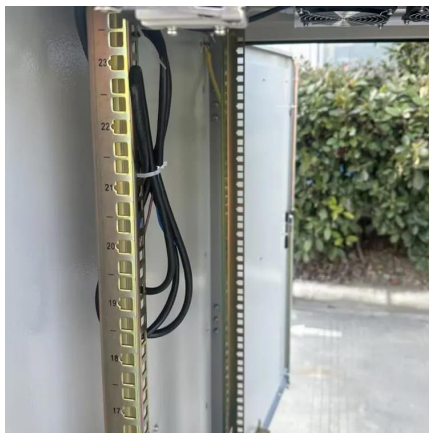
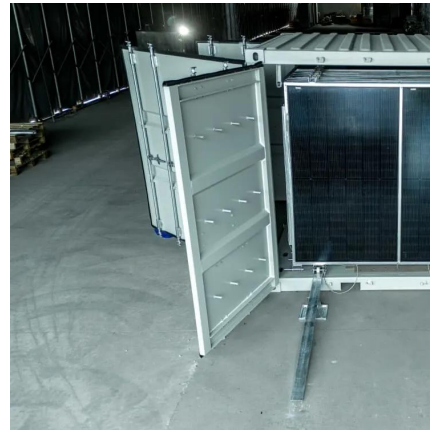
On average, a solar panel produces around 150 to 200 watts per square meter. This can vary due to: Example: A 1.7 m<sup>2</sup> panel with 20% efficiency will produce about 340W in full ...





## How many watts does solar energy produce per ...

The average solar energy generation is approximately 150 to 250 watts per square meter under optimal conditions, 2. However, this can vary ...



## Solar Panels Sizes and Weights (All Sizes)

100-watt solar panels that are 8.53 kilograms and measure 1.19 meters long by 0.16 meters wide have an area of 0.65 square meters. They ...

## **How to Understand Solar Panel Watts Per Square Meter**

Watts per square meter is a metric used to measure the power output of solar panels relative to their surface area. It represents a solar ...



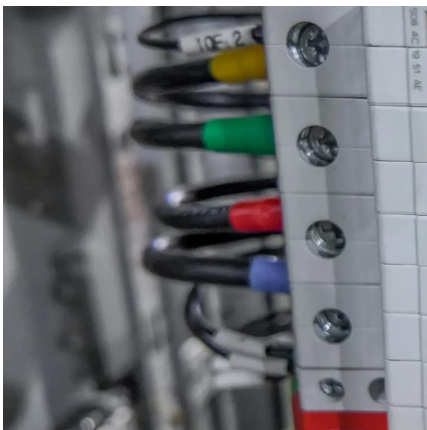
## How Many Solar Panels Are Needed to Power a ...

Understanding how many solar panels are needed to power a typical house can help homeowners make informed decisions about investing ...



## How Much Energy Does a Solar Panel Produce?

How much energy does a home solar system generate? Will it be enough for my home? Learn more about solar panel efficiency and power output.

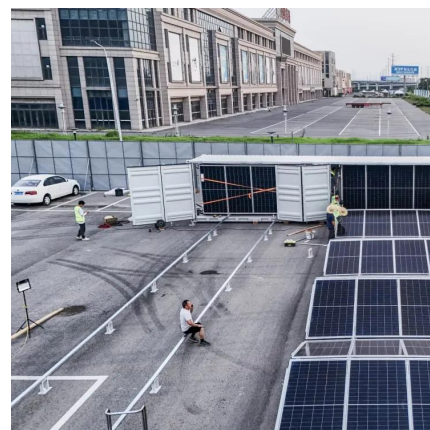


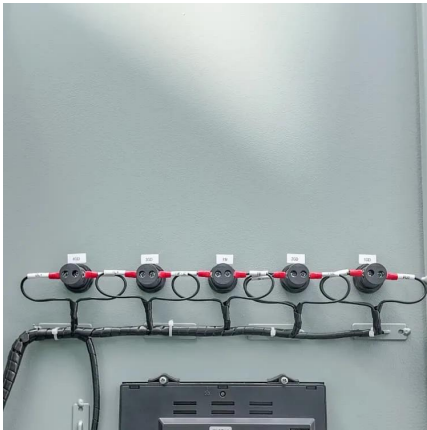
## Solar Panel Power Per Square Meter: How to ...

The efficiency of a solar panel is typically measured under standard test conditions (STC), which include a sunlight intensity of 1000 watts per ...

## **How many watts is a square meter of solar panel? , NenPower**

The power output of a solar panel per square meter typically ranges from 150 to 200 watts, which can be influenced by various factors such as efficiency, orientation, and ...





## Solar Panel Wattage Calculator

Optimal conditions: On a clear, sunny day, with the panel perfectly oriented towards the sun, a 400W panel might generate output close to its rated capacity. Typical conditions: Under ...

## Watts Per Square Meter Solar Panel - The Go-to Guide

On average, a standard solar panel with an area of 1 square foot can produce around 10-20 watts of power. However, the actual output can ...



## Solar Panel Wattage Calculator

This solar panel wattage calculator allows you to calculate the recommended solar panel wattage according to the energy consumption of your household appliances. If you want ...

## Watts Per Square Meter Solar Panel - The Go-to Guide

On average, a standard solar panel with an area of 1 square foot can produce around 10-20 watts of power. However, the actual output can vary based on the specific ...





## Contact Us

---

For catalog requests, pricing, or partnerships, please visit:  
<https://talbert.co.za>