

# **How many watts are suitable for a 220v inverter**





## Overview

---

Before we go any further, we highly recommend that you choose a pure sine wave inverter. This type of inverter delivers high-quality electricity, similar to your utility company. This way, none of your appliances run the risk of being damaged. Now, when it comes to sizing your inverter, you always need to check.

We have summarized the appliances that inverters from 300W to 3000W can run depending on their rated maximum power. Note to our readers: Use the above formula to determine.

In general, a 3000W to 5000W inverter works well for most homes, but the exact size depends on factors like household appliances, total power consumption, and battery setup. In this guide, we'll explain how to calculate the right inverter size for home backup power and even for solar power systems. How much wattage does an inverter need?

Check the nameplate on the appliance to determine the actual wattage required. \* Appliances and tools with induction motors (marked \* in tables) may require from 3 to 7 times the listed wattage when starting. The start-up load of the appliance or tool determines whether an inverter has the capability to power it.

How do I select an inverter that has enough power?

To select an inverter from DonRowe.com that has enough power for your application, add the watts for items you may want to run at the same time. Use the total wattage, plus 20%, as your minimum power requirement. Note: The wattage's given below are estimates. The actual wattage required for your appliances may differ from those listed.

How to calculate inverter size?

Using the Inverter Size Calculator is quick and easy. You'll need three inputs: Total Wattage (W): This is the total power consumption of all the appliances or devices you plan to run through the inverter. Safety Factor: A multiplier to ensure some buffer above your actual power requirement. Typically ranges from 1.1 to 1.5.



What are the different solar inverter sizes?

Solar generators range in size from small generators for short camping trips to large off-grid power systems for a boat or house. Consequently, inverter sizes vary greatly. During our research, we discovered that most inverters range in size from 300 watts up to over 3000 watts. In this article, we guide you through the different inverter sizes.

What size inverter do I Need?

You need an inverter rated for at least 1694.12 W, which you should round up to the next available size (e.g., 1800 W inverter). What Is a Safety Factor?

The safety factor accounts for unexpected power spikes or additional appliances being connected. It's a good practice to oversize the inverter slightly to ensure long-term reliability.

How much power do you need for an RV inverter?

If you only need to charge your phone and a light bulb, that is only 150 watts combined. A 200 watt portable unit such as the NDDI Direct Power Inverter will be sufficient for that. If you are going to run an air conditioner or a refrigerator in your RV, a more powerful inverter and battery are required.



## How many watts are suitable for a 220v inverter

---

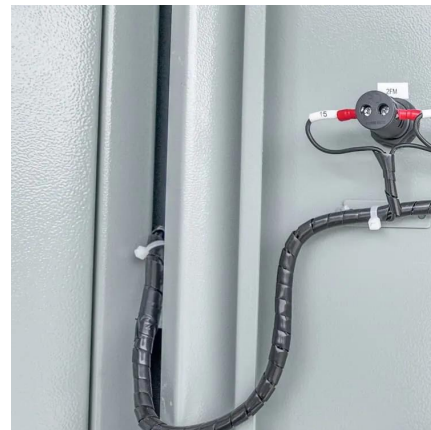


### Inverter Size Calculator

The Inverter Size Calculator is a digital tool that allows you to determine the correct inverter size needed for a specific total wattage load, considering factors like safety margins and inverter ...

### Running car 12V/220V Inverter as power supply for tools

Look into an inverter generator like a "WEN 56225i 2250-Watt Gas Powered Portable Inverter Generator". It will provide more watts and probably cost just a tiny bit more than an inverter ...



### Inverter Size Calculator [Power Inverter, AC, DC, ...]

To calculate the size of an inverter, multiply the total wattage of connected devices by a safety factor, then divide by the inverter's efficiency. ...

### Selecting the Proper Inverter / Frequency Converter for your

Step 1: The first step in your inverter selection is to calculate the total (Watts or Amps) of all





appliances you plan to power. Virtually all AC powered equipment will bear a label (usually ...



## What Inverter Size Do I Need to Run an Air Compressor?

An air compressor is a versatile device that can be used to inflate tires and supply air pressure for various building projects and tools in workshops and garages. Usually they run on electricity or ...

## What Size Inverter Do I Need?

To get a total watt estimate for all of the items you plan on powering with your inverter, check this convenient estimator. This useful measurement tool can save you time and give you an ...



## Inverter Amp Draw Calculator

The current drawn by a 1500-watt inverter for a 48 V battery bank is 37.5 amps. as per the inverter amp draw calculator.



## Inverter Size Calculator

WattBuild's calculator lets you list the devices you want to power and then tells you the key stats you need to know, as well as showing which products on the ...

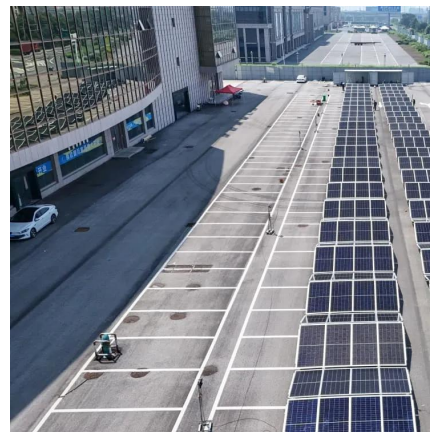


## Solar Inverter Size Chart

Having the right inverter is necessary to run appliances on solar power. Use these inverter size charts to find out what you need.

## What Size Inverter Do I Need?

To get a total watt estimate for all of the items you plan on powering with your inverter, check this convenient estimator. This useful measurement tool can ...



## What Size Wire For Any Inverter: Inverter Wire Size ...

What Size Wire for a 100 Watt Inverter? For a 100 watt inverter a 16 AWG wire is suitable for 10ft or under. This is because you will draw a maximum of 100 ...



## What Size Solar Inverter Do You Need for Solar Panels? Explained

How to Calculate Inverter Size While there's no definitive formula for calculating the optimal inverter size, a common approach is to use the following equation: Inverter Size ...



## What Size Power Inverter Is Needed for a House [Full Guide]

In general, a 3000W to 5000W inverter works well for most homes, but the exact size depends on factors like household appliances, total power consumption, and battery ...

## Solar Panel Size Calculator

Use our solar panel size calculator to find out the ideal solar panel size to charge your lead acid or lithium battery of any capacity and voltage. ...





### [How Many Amps Does a 2000W Inverter Draw?](#)

A 12V 2000W inverter running at maximum load draws 166.6 amps an hour. Divide the watts consumed per hour by the voltage and you get the amps. In this example, 2000 watts an hour ...

### **What Size Power Inverter Is Needed for a House [Full ...**

In general, a 3000W to 5000W inverter works well for most homes, but the exact size depends on factors like household appliances, total power ...



### **Power Inverter Calculator , Watt Calculator , Go Power!**

Which power inverter is right for you? By answering these simple questions, we can recommend a product for you in just a few moments. This calculator helps us identify how much power your ...

### [220 V to Watts How to Convert 220 Volts to Watts?](#)

220 V to watts: Here's how to convert 220 volts to watts, including the formula, useful information as well as a voltage to electric power converter.





### [The Only Inverter Size Chart You'll Ever Need](#)

We have created a comprehensive inverter size chart to help you select the correct inverter to power your appliances.



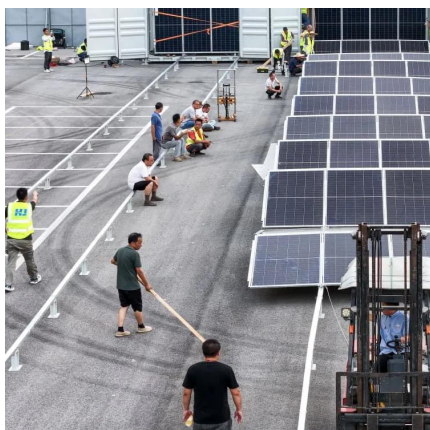
### **How to Select Right Inverter Capacity for Your Home**

How To Choose Right Inverter Capacity For Your Home, with the price of power inverters and batteries. The Ultimate Guide in Port Harcourt, Lagos, Abuja, ...



### **Mini Split Power Requirements (With Wire Size and Breaker Size)**

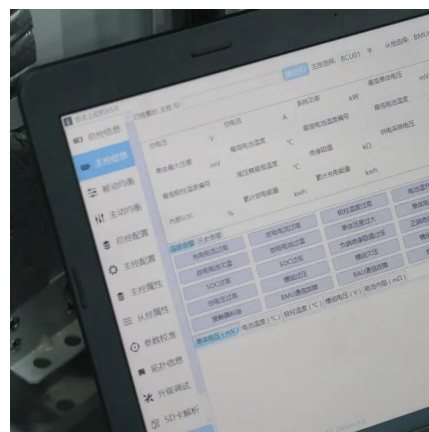
Power requirements for mini split systems are:  
110/120 Volt: Most mini split systems up to 12,000 BTUs can use this voltage. 208/220 Volt: 12,000 BTU higher. But, ...





## How Many Watt Inverter Do I Need? , Click to Learn More

If the total power requirement is 800W, an inverter rated to support 1000W or higher is highly suggested. Many choose inverters that can support the maximum load or the ...



## What Size Generator Do I Need? (With Easy To Use ...

What size generator do you need to power your home? Find out with our easy to use generator wattage calculator.

## Frequently Asked Questions about Voltage Converter Transformer

To determine the right voltage converter for your appliance, first find out the voltage (110 or 220 Volt AC) and wattage rating (watts or amps) information on the back or bottom of the ...



## What Size Inverter Do I Need for a 100 Watt Solar Panel

Wondering what size inverter you need for a 100 watt solar panel? Here's how to find the right inverter and calculate its size.



## Inverter Size Calculator

WattBuild's calculator lets you list the devices you want to power and then tells you the key stats you need to know, as well as showing which products on the market are compatible. Use the ...



## [Usage Chart: How Many Watts Do You Need?](#)

Use the total wattage, plus 20%, as your minimum power requirement. Note: The wattage's given below are estimates. The actual wattage required for your appliances may differ from those ...

## Inverter Size Calculator [Power Inverter, AC, DC, Solar Inverter]

To calculate the size of an inverter, multiply the total wattage of connected devices by a safety factor, then divide by the inverter's efficiency. The Inverter Size Calculator helps ...





## Contact Us

---

For catalog requests, pricing, or partnerships, please visit:  
<https://talbert.co.za>