

# How many times can outdoor power be used





## Overview

---

How long does a portable power station last?

A portable power station's lifespan is largely determined by its battery cycle life. This means the amount of times it can be charged and recharged before capacity drops.

How much power does an oupes portable power station use?

For example, an OUPES portable power station with a 1,000Wh capacity theoretically supplies 1,000 watts for one hour or 100 watts for ten hours. However, this is only the theoretical limit—real-world usage often differs. To estimate runtime, you must first determine the power draw of your devices.

How much power do you need for a camping trip?

If you're planning a weekend camping trip, a 500Wh power station might suffice. However, for extended off-grid living or emergency backup, you'd likely need a power station with a capacity upwards of 1000Wh. Every device you plug into the power station has its own power draw, measured in watts (W).

How many times can a Pisen power station charge a phone?

Put it this way: the highly popular Pisen Portable Super Fast Charging Outdoor Power Station 1000W can charge your smartphone around 100 times in one go - which means, theoretically, the power station can charge your phone up to 100,000 times before it even starts to drop capacity.

How much power does a power station use?

However, for extended off-grid living or emergency backup, you'd likely need a power station with a capacity upwards of 1000Wh. Every device you plug into the power station has its own power draw, measured in watts (W). High-draw appliances like refrigerators can consume around 150W to 200W, while a smartphone might only need 5W to charge.



## How many Watts Does a portable power station use?

Every portable power station comes with a rated capacity, typically measured in watt-hours (Wh). This figure represents the total amount of energy stored in the battery. For example, an OUPES portable power station with a 1,000Wh capacity theoretically supplies 1,000 watts for one hour or 100 watts for ten hours.



## How many times can outdoor power be used

---

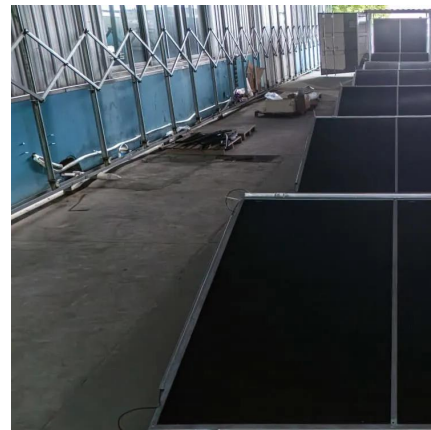


### Everything You Need to Know About Voltage in Landscape Lighting

120V outdoor lighting is mostly used to illuminate vast areas with fewer but brighter bulbs, or in household applications with considerable up-lighting on a huge canopy of enormous trees, ...

### Can Power Strips Be Used Outdoors (Checked) , TechPenny

"Although your power strip might be labeled as waterproof and weather-resistant, no power strip is designed to remain outdoors and subjected to the elements for extended ...



### Best Gauges for Outdoor Extension Cords: Choosing the Right ...

Designed with a 12-gauge thickness, it can handle up to 15 amps, making it suitable for numerous outdoor activities, from running power tools to outdoor lighting.

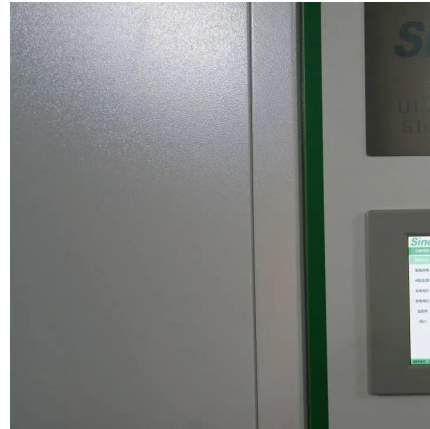
### How much electricity can an outdoor power supply store

The lifespan of an outdoor power supply is influenced by several factors, including the type





of battery, frequency of use, and how well it is maintained. An average lithium-ion ...



### [How Long Can 500W Power Station be Used?](#)

How long an outdoor power station can be used depends on the specific electrical appliances you use to charge, and it is closely related to the ...

### **How To Calculate How Long A Portable Power Station Will Last**

Calculating power station runtime isn't just about numbers--it's about making informed choices. By understanding battery capacity, appliance consumption, and efficiency factors, you ...



### [OUPES Portable Power Station Run Time Calculator](#)

The OUPES Portable Power Station Run Time Calculator helps you estimate the runtime of your devices with OUPES power stations, ensuring optimal energy usage for outdoor activities, ...



## 5 Must-Know Outdoor Power Point Code Rules (AS/NZS 3000)

The AS/NZS 3000 mandates that outdoor power points must be supplied by branch circuits rated at least 20 amperes, ensuring adequate power for common outdoor equipment ...



### [How To Calculate How Long A Portable Power ...](#)

Calculating power station runtime isn't just about numbers--it's about making informed choices. By understanding battery capacity, appliance consumption, ...

### [How Long Can 500W Power Station be Used?](#)

How long an outdoor power station can be used depends on the specific electrical appliances you use to charge, and it is closely related to the power of the electrical appliances.



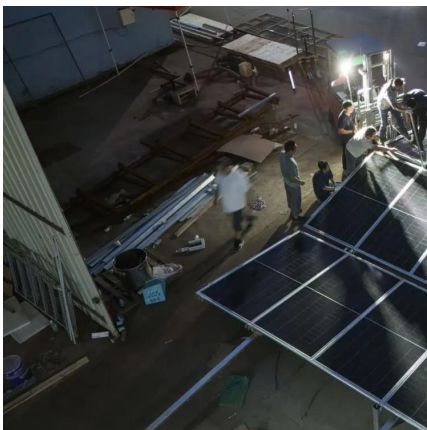
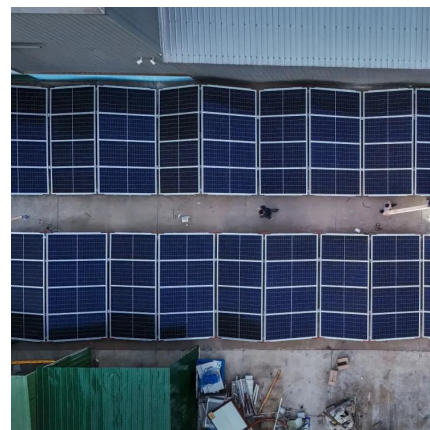
### [How to Choose the Right Extension Cord for Outdoor ...](#)

It's important to know that not all extension cords are the same. There are a few, yet significant details many of us overlook that can be ...



## Power, Energy and Time Calculator

What was the power used, i.e. how many watts (W) were used? The time taken was  $1 \times 60s + 46s = 106$  seconds. We can now simply enter the number of joules (240,000) and the number of ...



## How to Tell if an Extension Cord is for Outdoor Use?

Nowadays, it is essential to have an extension cord in any house. However, not all types of extension cords can handle external elements like rain, wind, or dirt. Some cables are ...

## [THE NO-NONSENSE GUIDE TO NFPA 110 COMPLIANCE ...](#)

UNDERSTANDING NFPA 110: ADVICE FOR INSTALLING AND MAINTAINING YOUR EMERGENCY POWER SYSTEM Power outages can mean more than lights out. For many ...



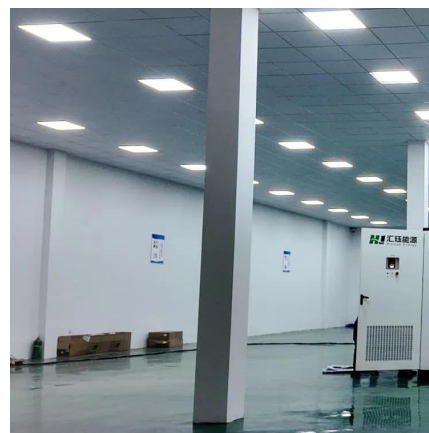


## How Long Do Portable Power Stations Last? Battery Life and ...

Most modern power stations, including Pisen's models, use lithium batteries, which typically last hold 500 to 1,000 charge cycles (battery cycle life) before their capacity drops to ...

## [Can Power Strips Be Used Outdoors \(Checked\)](#)

"Although your power strip might be labeled as waterproof and weather-resistant, no power strip is designed to remain outdoors and ...



## The Ultimate Guide to Choosing and Using Outdoor ...

For outdoor use, it is recommended to choose a cord with a lower gauge, such as 12 or 10 gauge, to ensure efficient power transmission and minimize the risk of ...

## [How Long Can a Portable Power Station Run? - ...](#)

In essence, the duration for which a portable power station can operate hinges on a trio of critical variables: the stored energy in the battery, ...





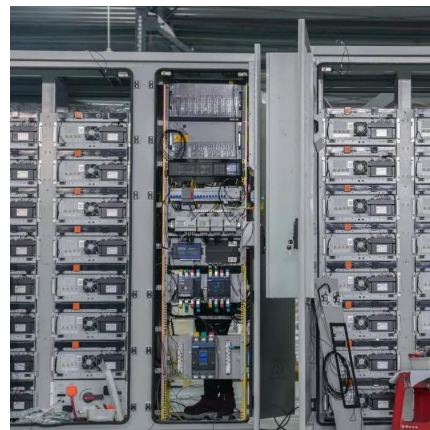
### [When are outdoor GPO's required? : r/AusRenovation](#)

When are outdoor GPO's required? Building an outdoor kitchen on the patio. Had a sparkie come in today and give me a quote for all the power points I want. I've got an empty circuit out there ...



## National Electrical Code (NEC) Rules for Outdoor Wiring

You can use power equipment to dig no closer than 24 inches to marked lines, but you must use a hand shovel when digging within 24 inches of either side of a marked line.



### [Breaking Down Power Usage: How Many Watts Do ...](#)

Reading Time: 7 minutes Understanding the power consumption of your tools is crucial for both safety and efficiency. How Many Watts Do ...





## How to Power Outdoor Christmas Lights: Simple Tips ...

You're ready to decorate the outside of your home and realize you only have one outdoor outlet. How do you power your outdoor Christmas ...

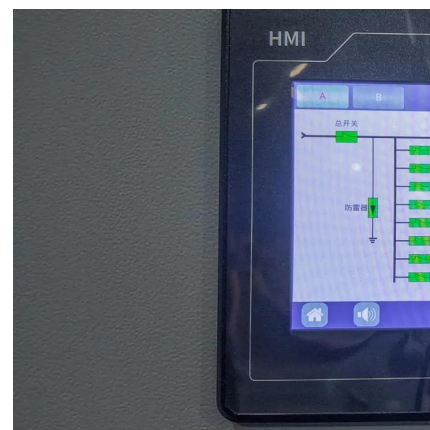


## How Long Can a Portable Power Station Run? - VTOMAN

In essence, the duration for which a portable power station can operate hinges on a trio of critical variables: the stored energy in the battery, the electrical demands of your ...

## Common Questions about Portable Power Stations for Outdoor Use

Typically, portable outdoor power stations can charge two to three devices at a time. However, if the total power consumption of the devices plugged in exceeds the power ...



## What Size Landscape Lighting Transformer to Use to ...

Now, to figure out how many 12V lights you can power outside with a single low voltage transformer, look to the wattage and VA ratings for the fixtures being ...



## National Electrical Code (NEC) Rules for Outdoor Wiring

Most modern power stations, including Pisen's models, use lithium batteries, which typically last hold 500 to 1,000 charge cycles (battery cycle life) before their capacity drops to ...



## Can I Use a Portable Power Station While Charging It?

Many might be wondering if they can use a portable power supply while charging it. In this article, we're not going to give a direct answer, but ...

## The new 100 Watt outdoor power supply: How many ...

Here we are moving in an area that the power supply can still easily cope with. Unfortunately, I can't tell you what effects a higher consumption ...





## Key Regulations for Portable Power Station Users ...

Here's a hard truth: knowing and following the Regulations for Portable Power Station Users can be game-changing. You see, these aren't ...

## [OUPES Portable Power Station Run Time Calculator](#)

The OUPES Portable Power Station Run Time Calculator helps you estimate the runtime of your devices with OUPES power stations, ensuring optimal energy ...



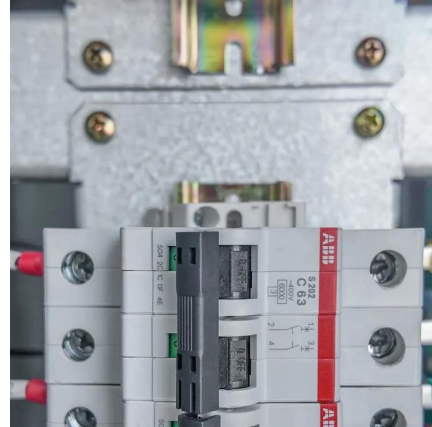
## Common Questions about Portable Power Stations for ...

Typically, portable outdoor power stations can charge two to three devices at a time. However, if the total power consumption of the devices ...

## Key Regulations for Portable Power Station Users Explained

Here's a hard truth: knowing and following the Regulations for Portable Power Station Users can be game-changing. You see, these aren't just boring guidelines. They're key ...





## Contact Us

---

For catalog requests, pricing, or partnerships, please visit:  
<https://talbert.co.za>