

# **How long does it take to charge 10 watts of solar power**





## Overview

---

How long does it take to charge with 10W solar power?

Charging with 10W solar power typically requires approximately 6 to 12 hours of full sunlight exposure, depending on several key factors such as 1. Solar panel efficiency, 2. Battery capacity, 3. Weather conditions, 4. Usage during charging. How long does it take to charge a battery with solar panels?

For example, let's say your estimated charge time is 8 peak sun hours and your location gets on average 4 peak sun hours per day. In that case, you know it'll take about 2 days for your solar panel (s) to charge your battery. Besides using our calculator, here are 3 ways to estimate how long it'll take to charge a battery with solar panels.

How long does a 100 watt solar panel take to charge?

Turns out, 100 watt solar panel will take about 9 peak sun hours to fully charge a 12v 100ah lead acid battery from 50% depth of discharge. how fast should you charge your battery?

Deep cycle or solar batteries are designed to charge and discharge at a specific rate, which is referred to as the c-rating.

How long to charge a 12V battery with 300W solar panels?

The duration to charge a 12V battery with 300W solar panels depends on the battery capacity and the solar panel current. For instance, at 6 peak hours and 25% system losses (efficiency is 75%), a single 300W solar panel can fully charge a 12V 50Ah battery in roughly 10 hours and 40 minutes. Let's understand it in detail.

How to calculate solar battery charge time?

Output power (W) = total watts (W) x conversion efficiency of the solar system x (1 - charge controller's power consumption rate) Substitute the data to get the output power of your solar panel is 1615W, and then finally divide the



solar battery charge by the output power of the solar panel to get the charging time, i.e.:

How to charge a solar battery?

First of all, you need to start by converting the battery capacity of your solar battery from Ampere hours to Watt hours, ie:  $\text{Watt-hours (Wh)} = \text{Amp-hours (Ah)} \times \text{Voltage (V)}$  Substituting the data gives you 960Wh for your solar battery. Then, you need to know how much you need to charge your solar battery, i.e.:

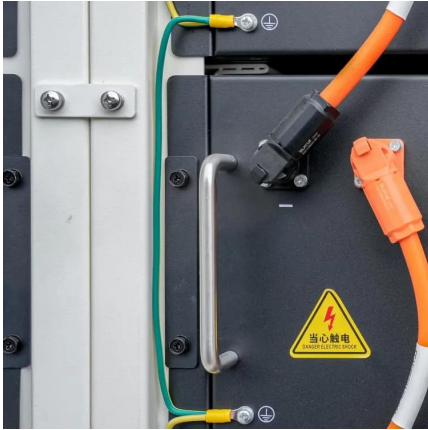
How much power does a solar charge controller use?

Under normal circumstances, the power consumption rate of solar charge controllers is between 5% and 10%. 6. How to Calculate the Time Required to Charge a Solar Battery After getting the above data, you can calculate how long it will take to charge your solar battery.



## How long does it take to charge 10 watts of solar power

---

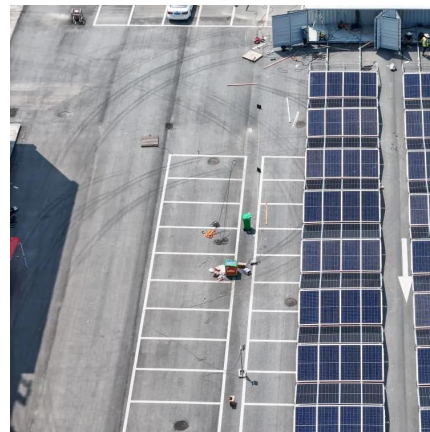


### How Long To Charge 12V Battery With 100-Watt Solar ...

12V Battery Charging Time Calculator (With 100-Watt Solar Panels) Here is an easy-to-use calculator that helps you determine the charging time. You simply ...

### Solar Sizing Calculations & Worksheet: Calculating ...

To calculate how long your solar panels will take to charge a solar generator or battery bank, you need to know battery capacity and solar power ...



### Solar Panel Charge Time Calculator

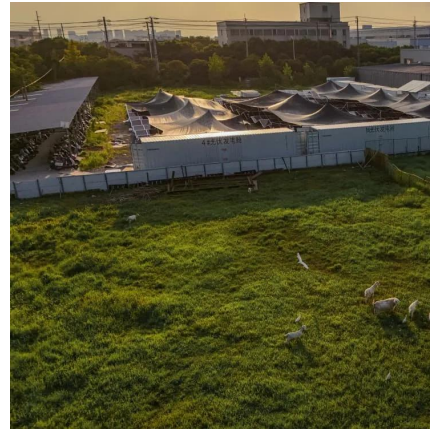
If you want to rely solely on formulas to calculate how long it takes to charge your solar batteries, it will not only take a lot of time and energy, but ...

### How to Calculate Charging Time of Battery by Solar Panel

So here's the deal: figuring out how long your solar panel takes to charge a battery isn't rocket



science. You just need the panel's wattage, the battery's capacity, and a pinch of ...

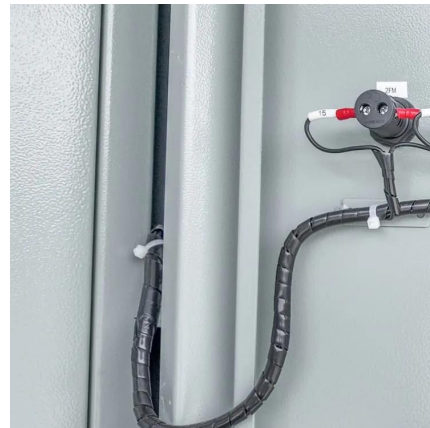


## Solar Panel Charge Time Calculator

In that case, you know it'll take about 2 days for your solar panel (s) to charge your battery.

## How Long Solar Panel Charge Battery: Factors That Impact ...

Accurate Charging Time Estimates: To gauge how long it takes to charge a battery, consider the solar output and the battery's capacity. Use the formula: Charging Time (hours) = ...



## [HOW LONG: Charging Delta Pro Ultra from 4](#)

My question is does anyone have experience charging the unit from solar. If so, how long, in ideal conditions, might it take to charge the unit from 4 - 400W Rigid Panels?





## Solar Panel Charge Time Calculator

If you want to rely solely on formulas to calculate how long it takes to charge your solar batteries, it will not only take a lot of time and energy, but also difficult to guarantee the ...



## How long does it take to charge with 10W solar power?

How long does it take to charge with 10W solar power? Charging with 10W solar power typically requires approximately 6 to 12 hours of full sunlight exposure, depending on ...

## What Will a 100 Watt Solar Panel Run? Here is the ...

Before installing a compact solar system for convenience and energy-saving, it's essential to ask, "What Will a 100 Watt Solar Panel Run?" ...



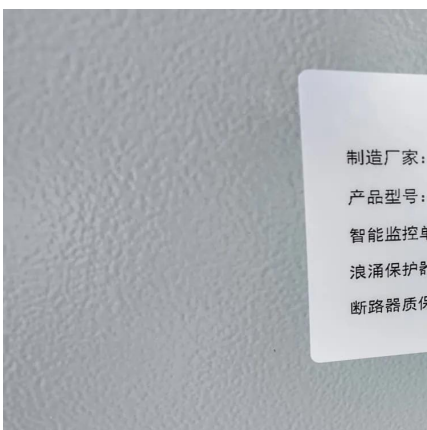
## 120W Solar Panel Output (EXPLAINED!)

How long does it take to charge A car battery with A 120W solar panel? 120 watt solar panel will about 6.2 peak sun hours to fully charge a 12v 50ah car battery from 100% ...



## 100W Solar Panel: All Things Explained - VTOMAN

How Long Will a 100 Watt Solar Panel Take to Charge a 12V Battery? Charging time for a 12V battery largely depends on its capacity and the state of discharge. For a 50Ah ...



## **Solar Panel Charge Time Calculator: Accurately Estimate How Long ...**

Whenever you need to calculate the charge time of your solar panel batteries, you can always turn to a solar panel charge time calculator. The battery or energy storage ...

## Solar Battery Charge Time Calculator

Solar Battery Charge Time Calculator determines the time required to fully charge a solar battery based on various input parameters.





## Charge time for Solix F3800 with single 400W solar panel?

Hi there - looking for any information regarding how long it would take to fully charge one Solix F3800 using one (or possibly two) of the 400w solar panels that Anker offers. They advertise ...

## How Long Does It Take to Charge a Solar Generator?

Learn how how long does it take to charge a solar generator? works and get practical tips to make the most of it.



## Solar Battery Charge Time Calculator (12v, 24v, 48v)

Use our solar battery charge time calculator to find out how long it will take to recharge your battery using solar panels.

## [Solar Battery Charge Time Calculator](#)

The Solar Battery Charge Time Calculator determines the time required to fully charge a solar battery based on various input parameters. Its primary use is to assist in ...





### [Solar Panel Charging Time Calculator](#)

Generally, you need to input the solar panel size (wattage), battery size (in Ah), and the peak sun hours in your area. This solar panel charge time ...



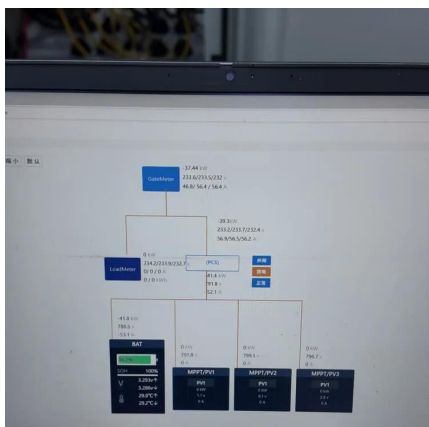
### How many watts of solar do I need to charge my phone

For instance, if your solar panel provides 10 watts of power and your phone requires approximately 11.1 watt-hours to charge, it would take ...



### [EcoFlow 400W Solar Panel Tested And Reviewed](#)

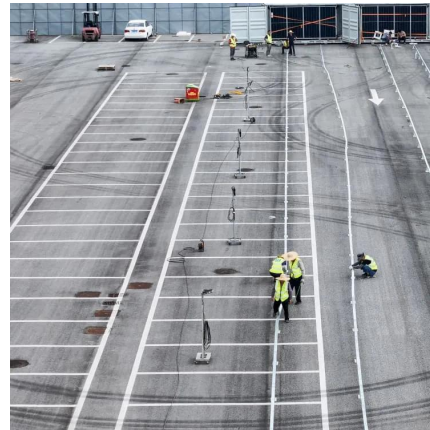
How Long Does It Take To Charge The Delta 2 With The 400W Solar Panel? In my tests, it took around 3.5 hours to charge the Delta 2 from 0 ...





## [Solar Panel Charging Time Calculator](#)

Generally, you need to input the solar panel size (wattage), battery size (in Ah), and the peak sun hours in your area. This solar panel charge time calculator for 12V batteries ...

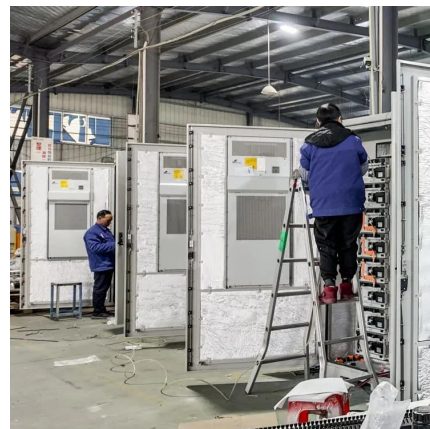


## **How to Calculate Charging Time of Battery by Solar ...**

So here's the deal: figuring out how long your solar panel takes to charge a battery isn't rocket science. You just need the panel's wattage, the ...

## [10 watt solar panel how long to charge battery?](#)

So, how long does it take to charge a battery using a 10 watt solar panel? The answer depends on a variety of factors, but as a general rule of thumb, a 10 watt solar panel can fully charge a ...



## **How long does it take to charge a phone with a solar ...**

Q: How long does it take to charge a phone with a solar charger? A: The charging time for a phone using a solar charger can vary widely based ...



## Solar Battery Charge Time Calculator (12v, 24v, 48v)

Whenever you need to calculate the charge time of your solar panel batteries, you can always turn to a solar panel charge time calculator. ...



## [Jackery 1000 Portable Power Station](#)

3 days ago· You could run a coffee pot, hot plate, induction plate or small microwave for short periods of time as long as the total power level doesn't ...

## Contact Us

---

For catalog requests, pricing, or partnerships, please visit:  
<https://talbert.co.za>