

How big is a 200-watt solar panel





Overview

How big is a 200 watt solar panel?

A 200-watt solar panel measures 64.57 inches long by 39.06 inches wide by 1.48 inches deep. Two-hundred-watt solar panels are still quite small, but they can power some houses. They are also perfect for RVs and boats. Many people select this size for its versatility and its compact size.

What are the different sizes of solar panels?

There are 3 standardized sizes of solar panels, namely: 60-cell solar panels size. The dimensions of 60-cell solar panels are as follows: 66 inches long, and 39 inches wide. That's basically a 66×39 solar panel. But what is the wattage?

That is unfortunately not listed at all. 72-cell solar panel size.

How big is a 100 watt solar panel?

A 100-watt solar panel measures 47 inches long by 21.3 inches wide by 1.4 inches deep. A 100-watt solar panel is not typically used to power a residential household. It can provide enough power for small household appliances but is usually used alongside a battery. With battery storage, any excess energy can be saved for later.

What is a 200 watt solar panel kit?

200-watt solar panel kits are often simply two panels of 100 watts sold together to produce a total of 200 watts of power. 200 watts is slightly below what is considered to be used standardly in the residential solar panel market, and a 200-watt solar panel kit will produce less electricity than most residential panel models.

How big is a 300 watt solar panel?

A typical 300-watt solar panel is 65.8 inches long and 36.1 inches wide. It takes up 16.5 sq ft of area. If you have a 1000 sq ft roof, and you can use 75%



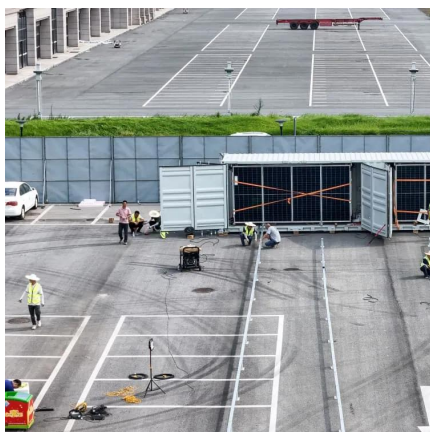
of that roof area for solar panels, you can theoretically put 45 300-watt solar panels on a 1000 sq ft roof. A typical 400-watt solar panel is 79.1 inches long and 39.1 inches wide.

What are the dimensions of 60-cell solar panels?

Many people select this size for its versatility and its compact size. The dimensions of these 60-cell solar panels are 66 inches long by 40 inches wide. The typical depth will range from 1.4 to 1.8 inches. In most cases, 60-cell solar panels are used in residential households.



How big is a 200-watt solar panel



How big is a 200W solar panel?

Most 200-watt solar panels on the market today measure roughly 3.5 to 4 feet long by 2 to 2.5 feet wide. Thickness is usually around 1 to 1.5 ...

How Big Is A 250 Watt Solar Panel? [Updated: April 2025]

A 250 watt solar panel is a great size for many different applications. It is about 3.25 feet by 5.5 feet and weighs around 19 kg. This size is great for many different homes and ...



200 Watt Solar Panels: What Will They Power & Recommendations

What is the size of a 200-watt solar panel (including dimensions?) The most typical size of panel used for residential installations is 65 inches by 39 inches and the common size for ...

Standard Solar Panel Sizes And Wattages (100W-500W ...

To bridge that gap of very useful knowledge needed, we have compared and averaged the



sizes of 100-watt to 500-watt solar panels available on the market. The goal here is to get to the ...

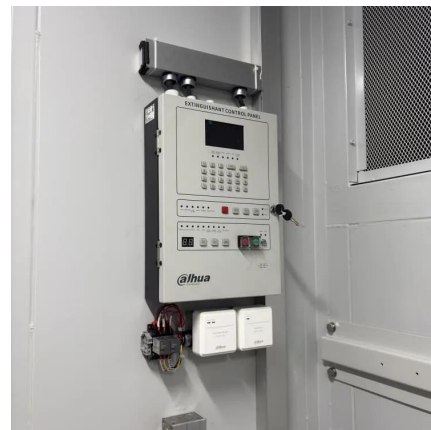


[What Size Solar Panel To Charge 100Ah Battery?](#)

The most common solar panel sizes are 100-watt, 200-watt, 300-watt, and 400-watt panels. This is a specified solar panel wattage that is generated during ...

[Complete guide to solar panel size and weigh](#)

Conclusion: There are many sizes of solar panels available in the market, if you choose solar panels after you have understood the approximate ...



How Long to Charge a 12V Battery with 200W Solar Panel

Learn how fast a 200W solar panel charges a 12V battery. Explore sizing tips, battery matching, and solar integration for off-grid and commercial systems.



How big is a 200W solar panel?

Most 200-watt solar panels on the market today measure roughly 3.5 to 4 feet long by 2 to 2.5 feet wide. Thickness is usually around 1 to 1.5 inches.



[200 Watt Solar Panels: What Will They Power](#)

What is the size of a 200-watt solar panel (including dimensions?) The most typical size of panel used for residential installations is 65 inches by 39 inches ...

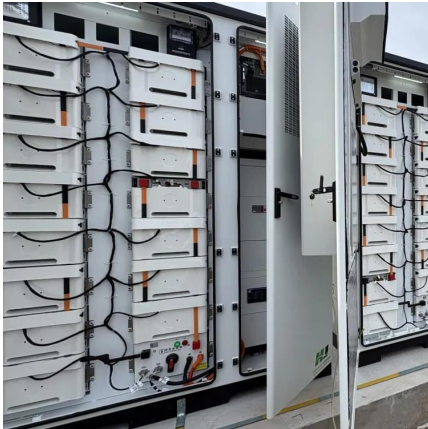
[The Ultimate Guide to 200w Solar Panel](#)

The time of day, seasonality and weather patterns, shading around the site, obstructions like trees and buildings, and the orientation of your solar panels are likely to ...



[Solar Panels Sizes and Weights \(All Sizes\)](#)

A 200-watt solar panel measures 64.57 inches long by 39.06 inches wide by 1.48 inches deep. Two-hundred-watt solar panels are still quite small, but they can power some ...



Solar Panel Sizes and Wattage Explained

But even today there is no definite answer for how large solar panels are, because the answer varies. The same goes for their wattages because not each system works on the ...



Standard Solar Panel Sizes And Wattages (100W ...

To bridge that gap of very useful knowledge needed, we have compared and averaged the sizes of 100-watt to 500-watt solar panels available on the ...

How Much Solar Power Do I Need For My RV?

How much solar power does your RV need? It depends how big your battery bank is. A 100-watt panel can produce about 30 amp-hours per day.



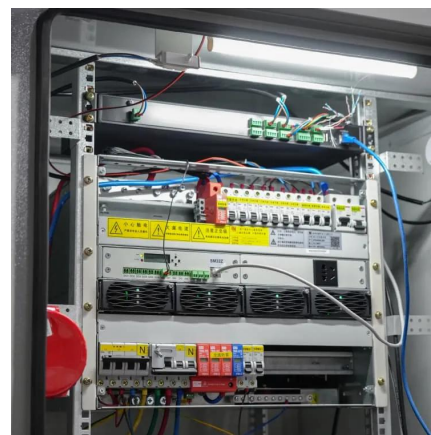


200 Watt Solar Panles

One really common size/wattage is a 200 watt solar panel. The physical size for one of these panels is roughly 5 feet long by 3 feet wide, and usually about 3 inches thick.

How Big is a 200 Watt Solar Panel

Solar panels are becoming increasingly popular as a source of renewable energy. But how big is a 200 watt solar panel? A 200 watt solar panel is about 6 feet ...



[What Size Charge Controller For 200W Solar Panel?](#)

So, what size charge controller do you need for a 200 watt solar panel? The answer is a 20 amp charge controller. So, what size charge controller for 200w solar panel? A 200 ...

200 Watt Solar Panel

How big is a 200-watt solar panel? A 200w solar panel typically measures around 1.5 meters in length and 1 meter in width. The exact dimensions may vary depending on the manufacturer ...



[What Size Breaker Do You Need For A 200-Watt ...](#)

Five 200-watt solar panels can produce around 4.5 kWh of energy per day. That is almost a quarter of what the average motorhome uses in a ...



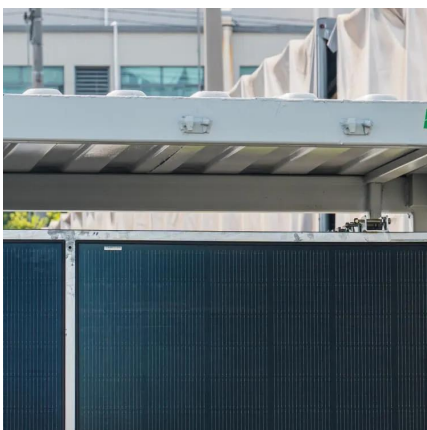
What Size Solar Panel Do I Need to Run a 12V Fridge?(with ...

Learn the right solar panel size to power your 12V fridge for outdoor adventures. Get tips on efficiency, components, and calculations for an uninterrupted chill with BougeRV's energy ...



[What Can a 200 Watt Solar Panel Run?.. Renogy US](#)

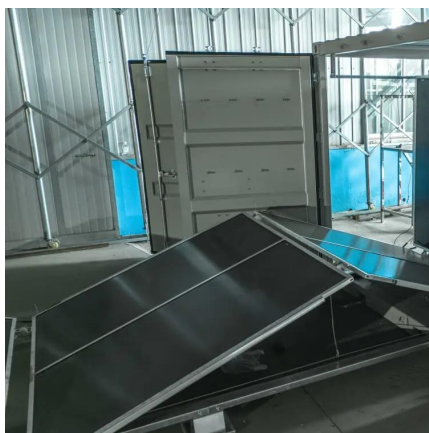
What can a 200 watt solar panel run? The versatile solar panel can run your small devices and home appliances. It is ideal for households that need electricity backup systems, cabins, RVs, ...





What is the size of a 200w solar panel? , NenPower

The size of a 200w solar panel can vary among manufacturers but generally measures around 1.6 to 1.7 meters in length and approximately 1 meter in width. This size ...



How big is a 200w solar panel? -

The size of a 200W solar panel will vary depending on the manufacturer, but they generally measure around 1.5 meters by 1 meter in size. A 200W solar panel can generate up ...

How Big is a 200 Watt Solar Panel

Solar panels are becoming increasingly popular as a source of renewable energy. But how big is a 200 watt solar panel? A 200 watt solar panel is about 6 feet by 3 feet, or 1.8 meters by 0.9 ...



[Solar Panels Sizes and Weights \(All Sizes\)](#)

But even today there is no definite answer for how large solar panels are, because the answer varies. The same goes for their wattages ...



What Size Breaker For Solar Panels? [Updated: September 2025]

When it comes to solar panels, you want to make sure you have the right size breaker. A 30-amp fuse is necessary for each panel when the panels are connected in ...

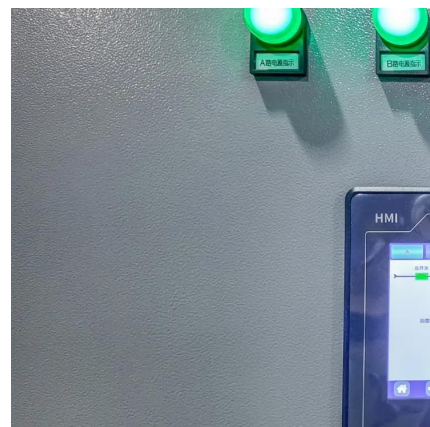


The Complete Off Grid Solar System Sizing Calculator

Step 1: Determine your Daily Energy Consumption The primary factor determining your off-grid system size is your Daily Energy Consumption, ...

Solar Panel Sizes, Dimensions & Weight , Solar Choice

Solar Panel Sizes - How big are solar panels? This is a question many homeowners ask when they are considering installing a solar system. The answer isn't entirely ...





200 Watt Solar Panles

One really common size/wattage is a 200 watt solar panel. The physical size for one of these panels is roughly 5 feet long by 3 feet wide, and usually about 3 ...

What is the size of a 200w solar panel? , NenPower

The size of a 200w solar panel can vary among manufacturers but generally measures around 1.6 to 1.7 meters in length and approximately 1 ...



How Many Batteries Do I Need for a 200 Watt Solar Panel?

If you're wanting to set up a 200-watt solar panel array, but are unsure of how many batteries you will need, we'll give you a breakdown of what you need.

Contact Us

For catalog requests, pricing, or partnerships, please visit:
<https://talbert.co.za>