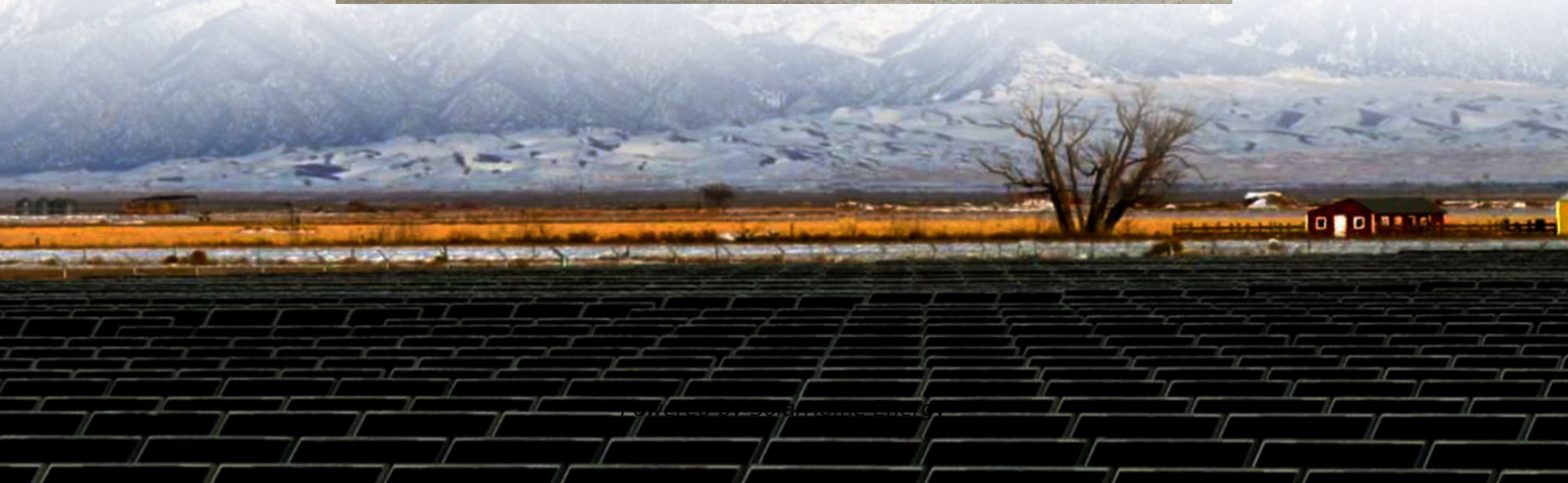


How big an inverter should I use for a 28kw photovoltaic panel





Overview

What size solar inverter do I Need?

A 4.5 kW array (or ten 450-watt solar panels) would just about cover your consumption. The type of solar panels you choose can also impact the size of the inverter you need. Different types of solar panels have different wattage ratings and efficiency levels. The three main types of solar panels are monocrystalline, polycrystalline, and thin film.

What is a solar inverter sizing calculator?

A solar inverter sizing calculator is a tool used to determine the appropriate size of a solar inverter for your solar power system based on the total power consumption of connected appliances and the size of your solar panel array. It ensures the inverter can handle the peak loads efficiently.

How much solar power can a 5kw inverter produce?

Under the Clean Energy Council rules for accredited installers, the solar panel capacity can only exceed the inverter capacity by 33%. That means for a typical 5kW inverter you can go up to a maximum of 6.6kW of solar panel output within the rules.

Should a solar inverter be oversized?

However, slight over-sizing of the solar panels compared to the inverter capacity (up to 133% under certain guidelines) can sometimes yield better overall efficiency due to the variable nature of solar irradiation throughout the day. The ratio for inverter sizing often depends on specific system requirements and local regulations.

Should your inverter size match your solar panel size?

Match your inverter to your lifestyle, not just your roof. If you're running a fridge, home office, and PS5 all day, size accordingly. If you're barely home, go leaner. Here's the cheat code: your inverter size should usually match your



solar panel system's size in kilowatts.

Why are solar inverters sized lower than kilowatt peak?

Inverters are usually sized lower than the kilowatt peak (kWp) of the solar array because solar panels rarely achieve peak power. The solar array-to-inverter ratio is calculated by dividing the direct current (DC) capacity of the solar array by the inverter's maximum alternating current (AC) output.



How big an inverter should I use for a 28kw photovoltaic panel



What size inverter do I need for solar panels

Hence, determining the correct size inverter for your solar panel system is crucial for maximizing efficiency and ensuring a reliable energy ...

Solar Inverter Sizing to Improve Solar Panel Efficiency

To calculate the required capacity for your solar inverter, sum up the total wattage of your solar panels and adjust based on expected system efficiency, shading, and the specific ...



Understanding Solar Inverter Sizes: What Size Do ...

Did you know solar inverters come in different sizes? Learn why size is important and which size inverter you need for your solar PV system here.

How big an inverter should a 28kw photovoltaic power station ...

How big should a solar inverter be? You can size it between 1.15 and 1.5 times larger. The rule of



thumb is to size your inverter 1.25 bigger than your solar array. In some cases, you may need ...

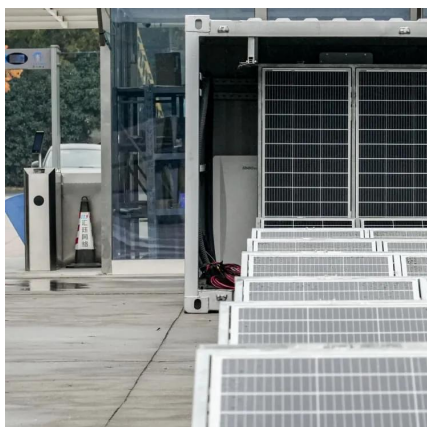
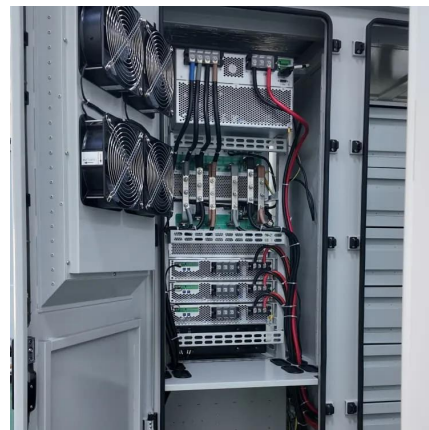


[How To Size A Solar Inverter in 3 Easy Steps](#)

In this guide, we share 3 easy steps on how to size a solar inverter correctly. We explain the key concepts that determine solar inverter sizing including your power needs, the type and number ...

Solar Inverter Sizing Guide for Maximum Efficiency , Mingch

This article explains how to calculate your inverter size, what affects it, and how to avoid costly mistakes, especially when using high-efficiency solutions like MINGCH Electrical's ...



[Inverter Size Calculator - self2solar](#)

Choosing the right inverter size is essential for a reliable and efficient solar power system. Our Inverter Size Calculator simplifies this task by accurately estimating the ...



What Size Solar Inverter Do I Need? Experts Break It Down

What Size Solar Inverter Do I Need? A solar inverter should closely match your solar system's output in kW--typically within 80% to 120% of your total panel capacity.



Choosing the Right Size Inverter for Your Solar Installation-----What ...

Because your solar inverter converts DC electricity coming from the panels, your solar inverter needs to have the capacity to handle all the power your array produces. As a general rule of ...

Solar Battery Size Calculator: What size battery do I ...

What size solar panel array do you need for your home? And if you're considering battery storage, what size battery bank would be most ...



Solar Panel Inverter Size Calculator: Know What You ...

Planning to install solar panels? You'll need a solar inverter. ...



[calculate inverter size for solar + Sizing Formula](#)

How do I determine the right size of inverter for my solar installation? To calculate the right inverter size, assess your daily energy consumption (measured in kWh) from your ...



[What size inverter do I need? _Tech Pro_Hoymiles](#)

Learn how to choose the right solar inverter size! Match panel capacity, location & avoid clipping. Expert tips for max efficiency & ROI.

What Size Solar Inverter Do I Need? Experts Break It ...

What Size Solar Inverter Do I Need? A solar inverter should closely match your solar system's output in kW--typically within 80% to 120% of your ...





[Solar Inverter Sizing Calculator: Important Guide](#)

This comprehensive guide will walk you through solar inverter sizing, explain its importance, and help you understand how to use a solar inverter sizing calculator effectively.

[What Size Inverter Do I Need for Solar Panels?](#)

Factors you should consider when sizing your solar inverter 1. The capacity of your solar panel array. This is the most important factor you should ...



Solar Inverter Sizing Guide for Maximum Efficiency

This article explains how to calculate your inverter size, what affects it, and how to avoid costly mistakes, especially when using high ...

Solar Panel Inverter Size Calculator: Know What You Need , Angi

Planning to install solar panels? You'll need a solar inverter. Follow this guide to calculate the best solar panel inverter size for your system.



What Size Solar Inverter Do I Need?

The inverter should closely match your panel capacity (80-100% of the array size). For example, if you install a 6 kW solar PV system, you'll need ...



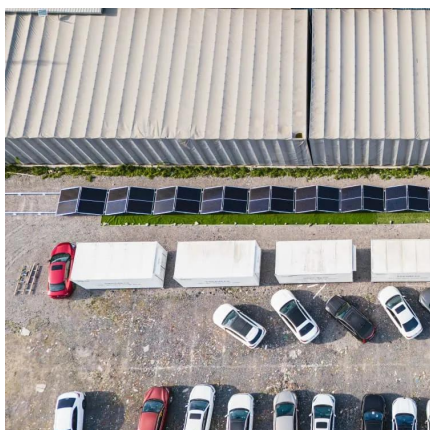
What Size Inverter Do I Need ?A Complete Guide to Choosing ...

Discover how to select the perfect inverter size for your solar or backup power system. Learn to calculate power requirements, account for surge loads, match battery ...



What Size Inverter Do I Need?

Learn how to calculate what size inverter you need with The Inverter Store's handy guide. We make the process straightforward for you to fit your exact ...





How to select an inverter

What size of inverter do I need? As a very rough rule of thumb - same as your solar panel system; for a 6 kilo Watt peak (kWp) solar panel ...



How to pick the right Inverter: Guide from Naked Solar

Both of which may affect your choice of inverter. A good quality solar energy inverter is an essential part of your panel set up. it's an intelligent piece of kit that connects to your system ...

[calculate inverter size for solar + Sizing Formula](#)

How do I determine the right size of inverter for my solar installation? To calculate the right inverter size, assess your daily energy ...



Solar Inverter Sizing to Improve Solar Panel Efficiency

Choosing the right inverter size is essential for a reliable and efficient solar power system. Our Inverter Size Calculator simplifies this task ...



What Size Inverter You Need (Calculations + Battery)

The size of the inverter required will be determined by the total wattage of the appliances you need to operate and the time they need to run. ...



How do you determine what size of inverter you will need to

You use gallons of gas per miles driven You use an amount of electricity (kw) per hour. So, with that analogy, kwh is your gas tank size (how big your battery is) and your inverter is the size of ...

Inverter that can do full 200A service? : r/SolarDIY

There is no point in having a 48kVA (200A, 240V) PV inverter. You don't use that much power, even with a fully electric American house. Do some electric monitoring at your house and you'll ...





Solar inverter size: Calculate the right size for your inverter

Inverters work most efficiently when operating near their maximum capacity and are typically sized to be roughly the same size as your solar panels. Inverters are usually sized lower than ...

Solar inverter size: Calculate the right size for your ...

Inverters work most efficiently when operating near their maximum capacity and are typically sized to be roughly the same size as your solar panels. Inverters ...



[How To Size A Solar Inverter in 3 Easy Steps](#)

This comprehensive guide will walk you through solar inverter sizing, explain its importance, and help you understand how to use a solar ...

Contact Us

For catalog requests, pricing, or partnerships, please visit:
<https://talbert.co.za>