

How big an inverter do I need for a 220v 5kW motor





Overview

Before we go any further, we highly recommend that you choose a pure sine wave inverter. This type of inverter delivers high-quality electricity, similar to your utility company.

We have summarized the appliances that inverters from 300W to 3000W can run depending on their rated maximum power. Note to our readers: Use the above formula to determine.

The calculation for the required inverter size is done using the following formula: $\text{Inverter Size (W)} = (\text{Total Wattage} \times \text{Safety Factor}) \div \text{Inverter Efficiency}$ This ensures that the inverter can handle both the load and the efficiency losses. How do I choose the right inverter size?

Here is our last bit of advice on how to select the correct inverter size: Check our inverter size chart. List all your appliances in the function of their power output. Apply our inverter size formula. Do not exceed 85% of your inverter's maximum power continuously. Oversize your inverter for extra appliances in the future.

What are the different solar inverter sizes?

Solar generators range in size from small generators for short camping trips to large off-grid power systems for a boat or house. Consequently, inverter sizes vary greatly. During our research, we discovered that most inverters range in size from 300 watts up to over 3000 watts. In this article, we guide you through the different inverter sizes.

How to size a 1500 watt power inverter?

A rule-of-thumb for sizing your 1500-watt power inverter is to combine the wattage of all the devices you are planning to use at the same time (don't forget basic necessities, like lights) and give yourself 20% headroom.

How much power does an inverter need?

The continuous power requirement is actually 2250 but when sizing an inverter, you have to plan for the start up so the inverter can handle it. Third,



you need to decide how long you want to run 2250 watts. Let's say you would like to power these items for an eight-hour period.

What is the inverter size calculator?

The Inverter Size Calculator is a valuable tool for determining the appropriate inverter size based on your power needs and electrical load. It is widely used in selecting inverters for residential, commercial, and solar applications, ensuring that the inverter's capacity matches the required energy demands efficiently.

How to choose a power inverter?

Second, select an inverter. For this example, you will need a power inverter capable of handling 4500 watts. The continuous power requirement is actually 2250 but when sizing an inverter, you have to plan for the start up so the inverter can handle it. Third, you need to decide how long you want to run 2250 watts.



How big an inverter do I need for a 220v 5kW motor



What Size Generator Do You Need to Run a Compressor?

If you need to run an electric air compressor in a location without an electrical outlet, you will need to have a generator accessible. Many job sites will require generators to power various tools ...

Inverter Size Calculator [Power Inverter, AC, DC, Solar Inverter]

Calculate the ideal inverter size with the Inverter Size Calculator. Perfect for selecting inverters for homes, solar panels, or vehicles based on power requirements.



How to Size a Circuit Breaker? Breaker Size Calculator

How to Calculate the Suitable Size of a Circuit Breaker? Sizing a Breaker Calculator for 1-Phase & 3-Phase Load Based on NEC, IEC and BC 7671

What Size Inverter You Need (Calculations + Battery)

Inverters are made with different power capacities, depending on the size of the system



you want to run. For this discussion, we are looking at a ...



[The Only Inverter Size Chart You'll Ever Need](#)

We have created a comprehensive inverter size chart to help you select the correct inverter to power your appliances.

What Size Inverter Do I Need

In this guide, we'll walk you through everything you need to know to calculate the right inverter size for your specific needs, from basic considerations to advanced power ...



[What Size Inverter do I Need? \[with Examples\]](#)

Sizing an inverter is very simple, as long as you know how much power do you exactly need. If you think that at some point you will be plugging in more ...





[Inverter Size Chat: What Size Inverter Do I Need?](#)

To find out your size, you just need to add together the total wattage of the appliances you wish to run. For example, TV (60W), coffee maker (700W), ...

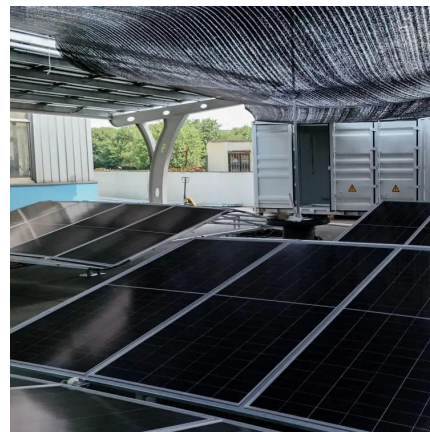


Inverter Size Calculator

Learn how to calculate the required size of an inverter with our in-depth guide. We provide a handy formula, examples, and answers to common questions to help you make the right ...

What Size Inverter Do I Need

To answer what size inverter do I need, you must know nominal load, surge power and continuous load of your appliances. After compensating the ...



Find the Right Inverter Size: How Big An Inverter Do ...

An inverter is a device that turns the power from a 12 volt DC battery, like the one in your car or truck, into the 120 volt AC power that runs ...



What Size Inverter Do I Need

In this guide, we'll walk you through everything you need to know to calculate the right inverter size for your specific needs, from basic ...



[What Size Inverter do I Need? \[with Examples\]](#)

Sizing an inverter is very simple, as long as you know how much power do you exactly need. If you think that at some point you will be plugging in more devices, consider that as well and ...

What Size Inverter Do I Need?

Finding the proper inverter size for your needs is as simple as adding together the necessary wattages of the items that you're looking to power.





48V Inverter: The Ultimate Guide to Efficient and Scalable Power

Unlock efficient power solutions with a 48V inverter--perfect for solar, off-grid, and backup systems. Learn how to choose the best one for your needs now!

Find the Right Inverter Size: How Big An Inverter Do ...

Before you buy a power inverter for your car, you need to know what size to purchase. Here's how to estimate your power needs.

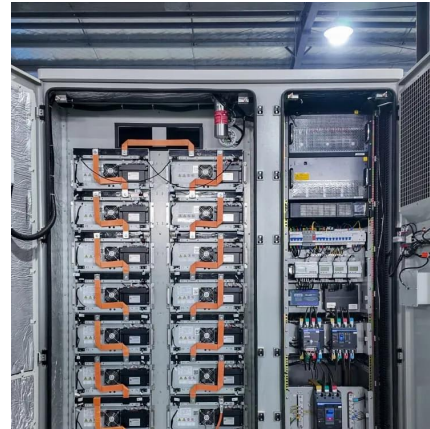


[What Size Inverter You Need \(Calculations + Battery\)](#)

Inverters are made with different power capacities, depending on the size of the system you want to run. For this discussion, we are looking at a domestic inverter that you can ...

Find the Right Inverter Size: How Big An Inverter Do You need?

Before you buy a power inverter for your car, you need to know what size to purchase. Here's how to estimate your power needs.



What size inverter do I require?

We have three households on the property and I would like to find out what size inverter would be recommended to be able to handle the peak consumption during load ...



Inverter Size Calculator [Power Inverter, AC, DC, ...]

Calculate the ideal inverter size with the Inverter Size Calculator. Perfect for selecting inverters for homes, solar panels, or vehicles based on ...



Can 1 hp motor run on inverter?

A 1 HP water pump motor runs with the help of an inverter or charge controller. The inverter must be sized appropriately to handle the amount of power and voltage needed to run a 1 HP water ...





Solar Inverter Sizing Guide for Maximum Efficiency

When choosing a solar inverter, size matters more than you might think. The right solar inverter sizing helps ensure your system performs ...



What Size Generator Do I Need To Run My Air Conditioner?

To find what size generator you need to power more than one appliance, you'll need to add together the wattage (make sure to include the starting wattage) of all the appliances you want ...

Choosing The Right Inverter Size For Powering Your ...

Selecting the right inverter size is crucial to power your fridge during outages. Consider starting surge, running wattage, climate, frequency of use, ...



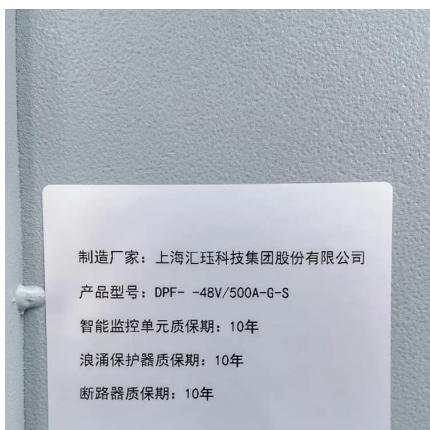
[My Generator Power Calculator Advice](#)

Note: this sizing advice relates to portable generators - if you are after generator sizing advice for a large stationary generator, then you may need to engage ...



What Size Inverter Do I Need

To answer what size inverter do I need, you must know nominal load, surge power and continuous load of your appliances. After compensating the harmonic distortion losses of an ...



Mini Split Power Requirements (With Wire Size and Breaker Size)

Do you need to know the recommended 12000 BTU mini split circuit breaker size? The chart shows that it should be 20 amp. Notice that the 9,000 BTU system only requires a ...

[Inverter Size Chat: What Size Inverter Do I Need?](#)

To find out your size, you just need to add together the total wattage of the appliances you wish to run. For example, TV (60W), coffee maker (700W), lamp (60W), phone (5W). So add together ...



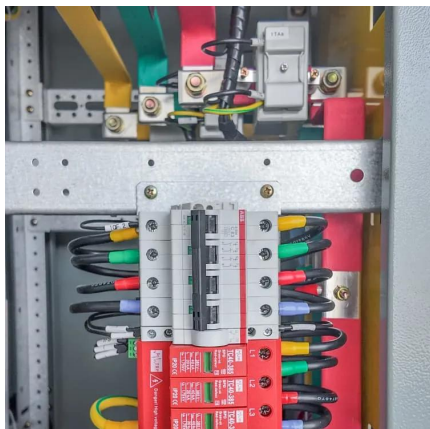


[How To Size A Solar Inverter in 3 Easy Steps](#)

What size solar inverter should you use for your system? In this guide we share how to correctly size a solar inverter in 3 steps.

[What Size Inverter Do I Need to Run a Fridge?](#)

What Size Inverter Do I Need to Run a Fridge: A fridge requiring 200W of power can be operated with an inverter that provides 1000W/2000W.



[Solar Inverter Sizing Calculator: Important Guide](#)

This comprehensive guide will walk you through solar inverter sizing, explain its importance, and help you understand how to use a solar inverter sizing calculator effectively.

Contact Us

For catalog requests, pricing, or partnerships, please visit:
<https://talbert.co.za>