

How big a solar panel does a 15W water pump inverter require





Overview

The Solar Water Pump Sizing Calculator is a tool designed to calculate the solar panel and battery requirements for a water pump. This calculator is particularly.

To use the Solar Water Pump Sizing Calculator, users must input the following data: 1. Water Flow Rate: The rate at which water flows from the pump in.

The Solar Water Pump Sizing Calculator uses the following formula to calculate the solar panel wattage and battery capacity: 1. Panel Wattage = (Water Flow.

Let's say you want to pump water from a depth of 50 feet at a rate of 5 GPM using a 12V pump that is 70% efficient. The region receives an average of 6 hours.

The Solar Water Pump Sizing Calculator is an essential tool for individuals who rely on solar power to pump water. By providing the required input data, users can.

For a 1/2 horsepower pump, you'll need about eight solar panels or 800 watts of power. If you need a larger system of up to 100 horsepower, you'll require around 320 panels (each 375 watts) for a total of 120,000 watts of power. Keep in mind that such large systems are not very common. How much wattage does a solar water pump need?

Let's say you want to pump water from a depth of 50 feet at a rate of 5 GPM using a 12V pump that is 70% efficient. The region receives an average of 6 hours of sunlight per day, and you want to use a 12V solar panel and battery. Using the Solar Water Pump Sizing Calculator, the minimum solar panel wattage required is calculated as follows:.

How many solar panels do I Need?

The size of the solar panel will vary depending on the pump that best fits your needs. The number of solar panels will depend on the wattage that a particular pump will need to operate, the phase type of the pump, and the age of the pump.



How many panels do I need for a solar water pump?

Single phase pumps will require more panels than what three phase pumps will require. Typically you will receive either 100 Watt Panels or 300 to 375 Watt panels for a system. What are the different types of solar water pump?

.

Where can I install a solar-powered water pump?

You can install a solar-powered water pump at any place with sunlight available because sunlight is the source of solar energy. It has fewer accessories and easy-to-install options. Some water pumps come with built-in solar panels and batteries along with a control box. You can also connect solar-powered water pumps with the existing solar system.

What is a solar water pump sizing calculator?

The Solar Water Pump Sizing Calculator is an essential tool for individuals who rely on solar power to pump water. By providing the required input data, users can accurately calculate the minimum solar panel wattage and battery capacity required to meet their water pumping needs.

How many solar panels does a well pump need?

3.81 kW 250 watts = 18 panels Based on our calculations and real-world conditions, you would need approximately 18 solar panels, each rated at 300 watts, to sufficiently power your well pump while accounting for various efficiency losses. Understanding the energy needs of your water pump is critical.



How big a solar panel does a 1 5W water pump inverter require



What Size Solar Panel To Use For A Well Pump? All You Need ...

If you're in need of a reliable and high-performance portable solar panel, We strongly recommend the Jackery SolarSaga 100W Portable Solar Panel ([Amazon Link](#)).

How to Size a Solar Pump Inverter for Your Water Pumping Needs

By following these steps, you can size a solar pump inverter that meets your specific water pumping needs and ensures reliable and efficient operation of your solar pump system.



What Size Solar Pump Inverter Do I Need to Run a ...

Choosing the right size solar pump inverter is crucial for the efficiency and longevity of your solar-powered water system. By following the ...

[How to Use a Solar Panel to Power a Fan \(Key Steps\)](#)

A solar fan kit takes just one solar panel to power the fan, and the two components - fan and solar



panel - are matched, so there are no other ...



What Size Solar Panel for Well Pump: Comprehensive Sizing Guide

Based on our calculations and real-world conditions, you would need approximately 18 solar panels, each rated at 300 watts, to sufficiently power your well pump ...

Reviewed: AISITIN Solar Fountain Pump (Features, ...

Imagine this: a world where your garden orchestrates a ballet of water, dancing to the tunes of sunlight. Enter the AISITIN 2.5W Solar Fountain Pump, a gadget so whimsically ...



What Size Solar Pump Inverter Do I Need to Run a Pump?

Choosing the right size solar pump inverter is crucial for the efficiency and longevity of your solar-powered water system. By following the guidelines and steps outlined in this ...



Solar Water Pump Sizing Calculator

The Solar Water Pump Sizing Calculator is a tool designed to calculate the solar panel and battery requirements for a water pump. This calculator is particularly useful for individuals who ...



What size solar panel do I need to run a water pump?

The size of the solar panel will vary depending on the pump that best fits your needs. The number of solar panels will depend on the wattage that a particular pump will need to operate, the ...

What Size Solar Panel To Use For A Well Pump? All ...

If you're in need of a reliable and high-performance portable solar panel, We strongly recommend the Jackery SolarSaga 100W Portable Solar ...



[What is Solar Pump Inverter? The Essential Guide](#)

This shows a big move towards using clean, green energy in pumping water. The solar pump inverter is key to this change. A solar pump inverter changes solar panel power, ...



How Many Solar Panels Do I Need to Run a Water Pump?

How many solar panels do you need for a water pump? You will also get a table of contents by which you can measure the number of solar panels needed for different wattages ...



[How many solar panels do I need for a 1HP motor?](#)

The number of solar panels needed for a 1 HP motor depends on the phase type, solar panel watts and age of pump! A brand new RPS 1 HP, three phase ...

How Many Panels Do You Need To Run A Solar Pump? , Demystifying Solar

For a 1/2 horsepower pump, you'll need about eight solar panels or 800 watts of power. If you need a larger system of up to 100 horsepower, you'll require around 320 panels (each 375 ...



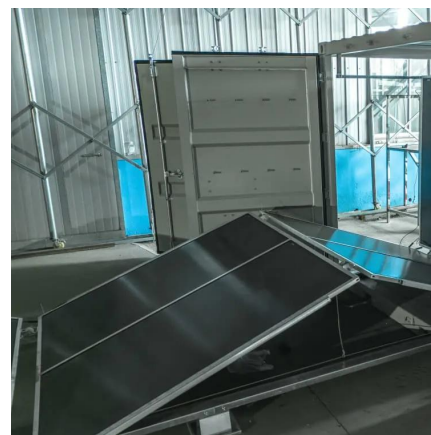


5W Solar Pond Fountain Kit , 470LPH Flow , 2.5ft ...

Premium Solar Panel to Pump Kit (Direct Drive)
For Small to Medium Ponds Max Head: 0.9m (2.9 Feet) Spray Fountain Height: 0.5m with 0.4m Diameter Spray ...

What Size Solar Panel To Use For A Well Pump? All ...

Today, well pumps are electrically powered. Solar panels are an increasingly popular way to generate the electricity needed to run a well pump ...



Amazon : 5w Solar Pump

5W Solar Water Pump KIT: DC Brushless Submersible Water Pump 124 GpH with 12V 5W Solar Panel for Birdbath Fountain, Fish Pond, and Garden Water Features (No Backup Battery)

How Many Solar Panels Do I Need to Run a Water ...

How many solar panels do you need for a water pump? You will also get a table of contents by which you can measure the number of solar ...



5W Solar Water Pump KIT: DC Brushless

...

Amazon : 5W Solar Water Pump KIT: DC Brushless Submersible Water Pump 124 GpH with 12V 5W Solar Panel for Birdbath Fountain, Fish Pond, ...



What Inverter Size for Well Pump to Use?

Well pumps use a lot of power, so an inverter has to be the right size to work. Factors to consider are watts, pump type and running time.



How to Choose the Right Solar Panel Size for a 1.5W Water Pump

Powering a 1.5W water pump typically requires a 3-5W solar panel, adjusted for local conditions and usage patterns. By factoring in runtime, sunlight availability, and efficiency losses, you can ...





Solar Fountain Pumps: Reviews and Comparisons of ...

This solar-powered fountain birdbath kit comes with a 1.8W high-efficiency solar panel that provides 20,000 hours of lifespan, a brush-less ...



What is a Water Pump Inverter and How Does It Work?

The Water Pump Inverter is an innovative solution that redefines water pumping efficiency. Its ability to modulate electrical currents empowers you with greater control over your water ...

The Ultimate Guide to Solar Pump Inverter: Types, ...

Uses of Solar Pump Inverters Solar water pump applications range from irrigation and drainage to swimming pool pumps. To run these systems ...



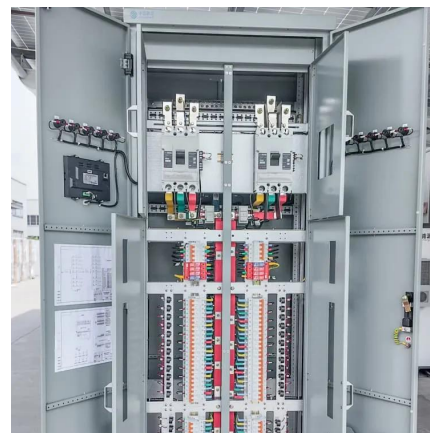
How Many Solar Panels Do You Need to Run a Water Pump?

4 days ago· To run a water pump on solar, multiply the pump's power by 1.5 to calculate the total solar panel wattage needed. For example, a 1000W pump requires at least 1500W of solar ...



What Size Solar Panel for Well Pump: Comprehensive ...

Based on our calculations and real-world conditions, you would need approximately 18 solar panels, each rated at 300 watts, to sufficiently ...



How Many Panels Do You Need To Run A Solar Pump?

For a 1/2 horsepower pump, you'll need about eight solar panels or 800 watts of power. If you need a larger system of up to 100 horsepower, you'll require around 320 panels (each 375 ...

What Kind of Solar Inverter Can Drive a Water Pump?

2. Solar On-Grid Inverter A solar on-grid inverter, also known as a grid-tied inverter, feeds the electricity generated from solar panels directly into ...





Contact Us

For catalog requests, pricing, or partnerships, please visit:
<https://talbert.co.za>