

# Electric power base station





## Overview

---

What type of generator does a base station use?

The air conditioning of the base station runs at 220 VAC. These base stations can be powered by two types of diesel generators. The first is the conventional type where 220 VAC is converted to 48 VDC to charge the batteries and power the communication equipment.

How much power does a cellular base station use?

This problem exists particularly among the mobile telephony towers in rural areas, that lack quality grid power supply. A cellular base station can use anywhere from 1 to 5 kW power per hour depending upon the number of transceivers attached to the base station, the age of cell towers, and energy needed for air conditioning.

How to design a solar-powered base station?

In order to design and implement a solar-powered base station, PVSYST simulation software has been used in various countries including India, Nigeria, Morocco, and Sweden. This software allows for estimation of the number of PV panels, batteries, inverters, and cost of production of energy considering the geographical and other design parameters.

What is the construction process of energy storage power stations?

The construction process of energy storage power stations involves multiple key stages, each of which requires careful planning and execution to ensure smooth implementation.

What are battery storage power stations?

Battery storage power stations are usually composed of batteries, power conversion systems (inverters), control systems and monitoring equipment. There are a variety of battery types used, including lithium-ion, lead-acid, flow cell batteries, and others, depending on factors such as energy density, cycle



life, and cost.

How do cellular base stations work?

Most transceivers in the cellular base stations are run by 48 VDC to charge the batteries and power the communication equipment. The air conditioning of the base station runs at 220 VAC. These base stations can be powered by two types of diesel generators.



## Electric power base station

---



### Electricity Data

Demand-side management program Electricity and the environment Electric power industry estimated emissions by state (back to 1990 ) Emissions from energy consumption at power ...

### Battery storage power station - a comprehensive guide

These facilities play a crucial role in modern power grids by storing electrical energy for later use. The guide covers the construction, operation, management, and ...



### The Best Portable Power Stations

What is the difference between a power bank and a portable power station? Size is the main difference between the best power banks and the ...

### What equipment does the base station energy storage ...

The equipment utilized in the base station energy storage cabinet comprises multiple



essential components, which include: batteries, inverters, ...

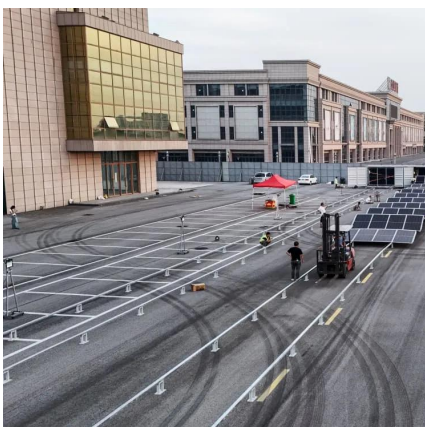


### [Best Tested Portable Power Stations in 2025](#)

Never run out of power again with the best portable power stations out there, tried and tested by our experts.

### **What is a base station energy storage power station , NenPower**

A base station energy storage power station refers to a facility designed to store energy generated from various renewable sources and supply it efficiently to power base ...



### **Texas' Only Energy Provider With Home Backup Power , Base Power**

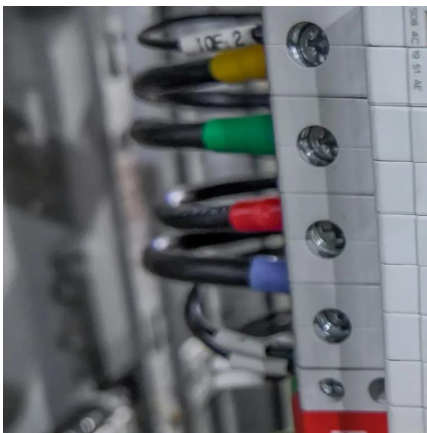
Base provides the most affordable home backup in Texas--up to 48 hours of outage protection, for 95% less than alternatives. Back up your home for up to 48 hours with reduced energy ...





## What equipment does the base station energy storage cabinet ...

The equipment utilized in the base station energy storage cabinet comprises multiple essential components, which include: batteries, inverters, energy management ...



## List of power stations in Colorado

This is a list of electric power generation stations in the U.S. state of Colorado, sorted by type and name. As of December 2022, Colorado has a total summer capacity of 18,084 MW through all ...

## [Best Portable Power Stations for 2025 -](#)

...

From compact 512-Wh units to massive 2048-Wh ones with optional expansion batteries large enough to power ...



## Two-Stage Robust Optimization of 5G Base Stations Considering

However, the uncertainty of distributed renewable energy and communication loads poses challenges to the safe operation of 5G base stations and the power grid. ...



## How EV Charging Stations Work

The power behind EV charging stations: grid electricity and renewable energy Two basic power sources supply electricity for charging electric vehicles: Grid ...



## What is an energy storage base station? , NenPower

By providing ancillary services such as frequency and voltage regulation, energy storage base stations contribute to a more stable electrical ...

## Base and Peak Load Stations. - ELECTRICAL ...

Base load stations are often powered by sources with low operating costs and long run times, such as coal, nuclear, or hydroelectric power plants. Peak ...





## 12 Best Portable Power Stations for Home Backup in 2025 ...

If you're looking for the best portable power station for home backup, this guide covers the top models built to keep your essential devices running when the grid goes down.

## 12 Best Portable Power Stations for Home Backup in ...

If you're looking for the best portable power station for home backup, this guide covers the top models built to keep your essential devices running when the ...



## What is a base station energy storage power station

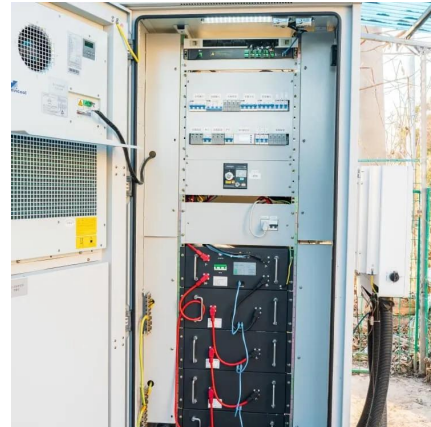
A base station energy storage power station refers to a facility designed to store energy generated from various renewable sources and ...



## The 10 best power stations of 2025: Tested and reviewed!

Power stations come in all sizes, weights, prices, and with all kinds of different features. How can you tel which is the best power station?





## Peaking power plant

Peaking power plant Kearny Generating Station, a former coal-fired base load power plant, now a gas-fired peaker, on the Hackensack River in New Jersey Peaking power plants, also known ...



## Steam-electric power station

Mohave Generating Station, a 1,580 MW steam-electric power plant near Laughlin, Nevada fuelled by coal A steam-electric power station is a power station in which the electric ...



## [List of power stations in California](#)

This is a list of power stations in the U.S. state of California that are used for utility-scale electricity generation. This includes baseload, peaking, and energy storage power stations, but does not ...





## What is an energy storage base station? , NenPower

By providing ancillary services such as frequency and voltage regulation, energy storage base stations contribute to a more stable electrical grid. They act as a cushion against ...

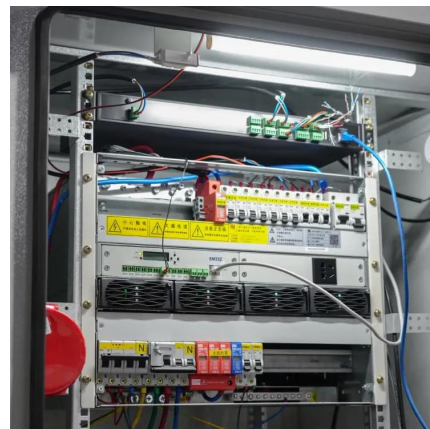


## Unraveling the Mysteries of Cell Towers and Base ...

In the ever-evolving landscape of mobile communications, understanding the intricacies of cell sites, cell towers, and base stations is crucial. These terms, ...

## [Base Power Battery & Energy Plans and Pricing](#)

Get a clear, no-surprises energy plan with Base Power. Guaranteed below-market electricity rates, no hidden fees--plus built-in home backup for ultimate ...



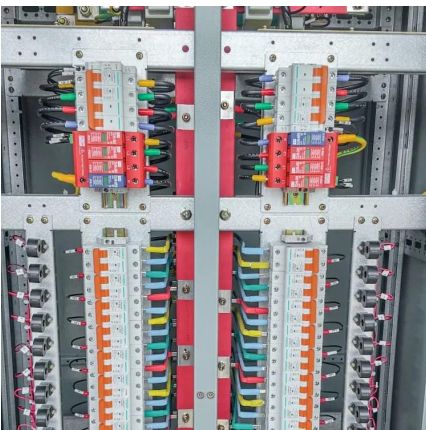
## Battery storage power station - a comprehensive guide

These facilities play a crucial role in modern power grids by storing electrical energy for later use. The guide covers the construction, operation, management, and functionalities of these power ...



## Power Base Station

Maximum base station power is limited to 38 dBm output power for Medium-Range base stations, 24 dBm output power for Local Area base stations, and to 20 dBm for Home base stations.



## A technical look at 5G energy consumption and performance

Figure 3: Base station power model. Parameters used for the evaluations with this cellular base station power model. Energy saving features of 5G New Radio The 5G NR ...

## Base Power Battery & Energy Plans and Pricing , Base Power

Get a clear, no-surprises energy plan with Base Power. Guaranteed below-market electricity rates, no hidden fees--plus built-in home backup for ultimate reliability.





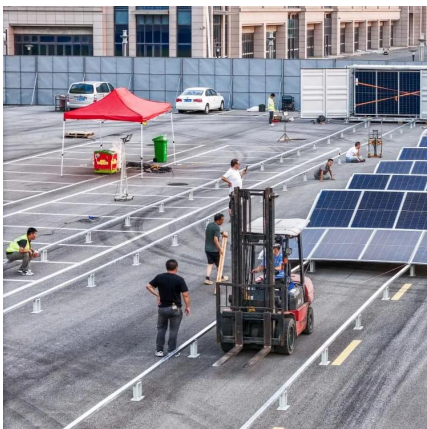


### [Energy Management for a New Power System ...](#)

Abstract. This paper discusses the energy management for the new power system configuration of the telecommunications site that also ...

## **Base Power Battery Specifications , Compare Models**

Compare Base Power's home battery systems - from our streamlined 20kWh wall-mount to our advanced 50kWh ground-mount solution. View complete ...



## **Base Power Battery Specifications , Compare Models**

Compare Base Power's home battery systems - from our streamlined 20kWh wall-mount to our advanced 50kWh ground-mount solution. View complete technical specifications.

## **Contact Us**

---

For catalog requests, pricing, or partnerships, please visit:  
<https://talbert.co.za>