

Dimensions of 350 photovoltaic panels





Overview

A 350 watt solar panel typically measures 67 inches long and 40 inches wide, and weighs around 40 lbs. Monocrystalline modules with this wattage have 60 or 72 cells, while polycrystalline modules have 72 or 96 cells. The average solar panel size for residential use is around 16.5 square feet.



Dimensions of 350 photovoltaic panels



[Guide to Solar Panel Sizes & Dimensions in the UK](#)

Do you wonder what solar panel size you need for your home setup? This guide presents different PV panels and their sizes and assists you in calculating solar power.

Guide to Solar Panel Sizes & Dimensions (August 2025)

For instance, a typical 2kW solar panel system suited for 1-3 people will need anywhere between 5 and 8 solar panels (for 350W panels).

...



350 watt solar panel for sale , Buy for home, boat and RV

What Are The Dimensions Of A 350 Watt Solar Panel? A 350 watt solar panel typically measures 67 inches long and 40 inches wide, and weighs around 40 lbs. ...

Solar Panel Sizes, Dimensions & Weight , Solar Choice

Standard residential solar panels contain 60 solar cells (or 120 half-cut solar cells) and typically



generate anywhere from 350W to 500W of electricity. The size of these panels ...

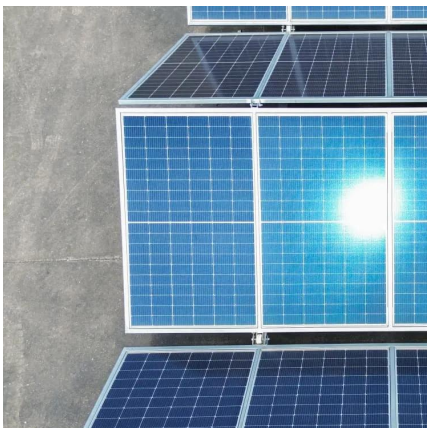


Understanding Solar Panel Dimensions In 2025: A Complete Size ...

Explore the most common solar panel dimensions in 2025, including residential and commercial sizes. Learn how solar panel size dimensions affect power, installation, and ...

[What Are The Dimensions of Solar Panels?](#)

Have you ever wondered what the actual size of a solar panel is? As the world shifts towards renewable energy, many homeowners and ...



Guide to Solar Panel Sizes & Dimensions (August 2025)

For instance, a typical 2kW solar panel system suited for 1-3 people will need anywhere between 5 and 8 solar panels (for 350W panels). This assumes you'll receive about ...



Solar Panel Sizes & Dimensions in the UK (2025) , Glow Green

Discover common solar panel sizes and dimensions in the UK. Find out which solar panel size is best suited for your energy needs.



350 Watt Solar panels for sale , Prices, dimensions, weight, ...

350 Watt Solar panels' range of prices, dimensions, sizes, voltage output, specifications datasheets Ranges of information Voltage: 27.4V ~ 60.7V Amp: 5.77A ~ 13.06A

Q CELLS DUO-G8+

All you need to know about the DUO-G8+ - 350 Watt solar panel including rating, cost, efficiency, and warranty terms.



[350 Watt Solar Panel Price in India With subsidy](#)

350-Watt Solar Panel Price & Specification A 350-watt panel comes in various designs and price points on the Indian market. In India, solar panels made of ...



350 watt solar panel for sale , Buy for home, boat and RV

Their dimensions also allow them to fit quite easily on top of almost any vehicle, so a 350 watt solar panel for RV is a good idea. 350W solar panels tend to weigh about 40 lbs, ...

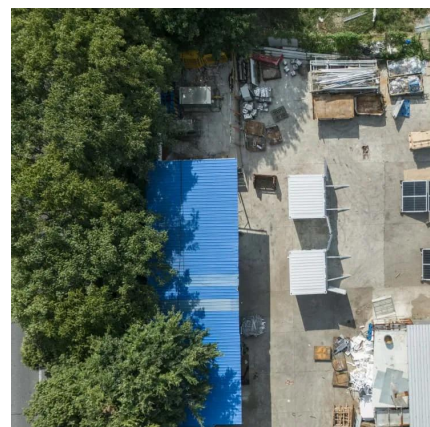


Solar Panel Sizes, Dimensions & Weight , Solar Choice

Standard residential solar panels contain 60 solar cells (or 120 half-cut solar cells) and typically generate anywhere from 350W to 500W of ...

[Panasonic 350W Solar Panel 120 Cell EverVolt ...](#)

Panasonic 350W Solar Panel 120 Cell EverVolt EVPV350PK (100 ratings) Q& A Specification Compare See all Rated Power Output 350 W ...



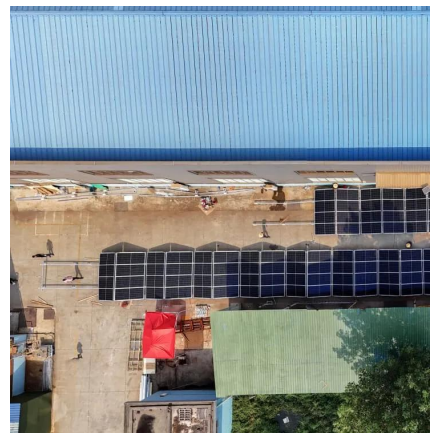


Complete Guide to Solar Panel Size

An average solar panel system requires between 15 to 19 solar panels and takes up 260 to 340 square feet of space. Solar panel efficiency, output, a good warranty, and a trusted brand are ...

[350W NeON® 2 Solar Panel for Home . LG US Solar](#)

Get information on the LG 350W NeON® 2 Solar Panel for Home. Find pictures, reviews, and tech specs for the LG LG350N1C-V5



[Standard Solar Panel Sizes And Wattages \(100W ...](#)

The goal here is to get to the average solar panel size by wattage. You can find typical dimensions of 100W, 150W, 170W, 200W, 200W, 220W, 300W, 350W, ...

[Solar Panel Size & Weight: The Ultimate Guide 2024](#)

The size of a solar panel is often described by the number of cells it has, such as 60-cell panels, arranged in a 6 by 10 grid, commonly used for home installations with output ratings between ...



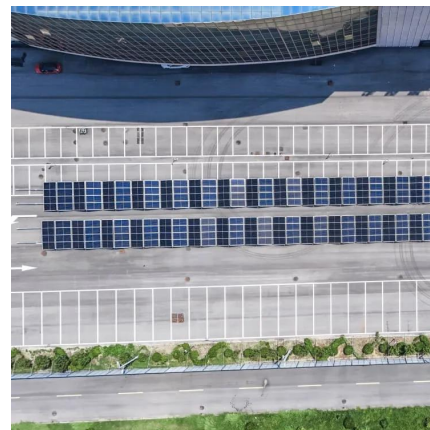
How Big Is A 350 Watt Solar Panel? [Updated: September 2025]

What Are The Dimensions Of A 350 Watt Solar Panel? A 350 watt solar panel typically measures 67 inches long and 40 inches wide, and weighs around 40 lbs. ...



Solar Panel Calculator

Use our solar panel calculator to find your solar power needs and what panel size would meet them.



Solar Panel Sizes And Wattage , Sizing, Dimensions & Weight

Learn what the sizes of solar panels are in Australia and how many you can fit onto your roof - but more importantly, how many do you really need?



How Big Are Commercial Solar Panels?

Most commercial panels contain 60-96 photovoltaic cells, though there are some larger ones typically reserved for utility-scale applications. The size of solar ...



Standard Solar Panel Sizes And Wattages (100W-500W Dimensions)

The goal here is to get to the average solar panel size by wattage. You can find typical dimensions of 100W, 150W, 170W, 200W, 200W, 220W, 300W, 350W, 400W, and 500W solar ...

350w solar panel specifications

C4, 35mm frame, LR4-60HPB-350M. Established in 2000, LONGi has produced photovoltaic cells since 2007 and is the world leader BLUETTI PV350 350w solar panel? With a folded size of ...



Solar Panel Sizes And Wattage , Sizing, Dimensions ...

Learn what the sizes of solar panels are in Australia and how many you can fit onto your roof - but more importantly, how many do you ...



Panasonic Solar Module 350-Watt

All you need to know about the Solar Module 350-Watt solar panel including rating, cost, efficiency, and warranty terms.



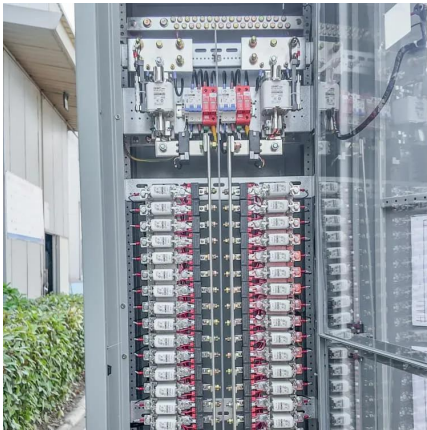
BLUETTI PV350D Solar Panel , 350W

BLUETTI PV350 is a monocrystalline foldable solar panel with an overall efficiency of 23.4%, making it an efficient and durable solar panel. [Click to learn more!](#)

[Solar Panel Sizes & Dimensions UK \(2025\)](#)

A typical solar panel for UK homes measures around 1.7 metres in length and 1 metre in width, giving it a surface area of roughly 1.6 to 2 square ...





Understanding Solar Panel Dimensions In 2025: A ...

Explore the most common solar panel dimensions in 2025, including residential and commercial sizes. Learn how solar panel size ...

Contact Us

For catalog requests, pricing, or partnerships, please visit:
<https://talbert.co.za>