

Communication room base station type





Overview

In communications, a base station is a communications station installed at a fixed location and used to communicate as part of one of the following:

- a system, or;
- a system such as or .



Communication room base station type



The Base Station in Wireless Communications: The Key to ...

Equipped with an electromagnetic wave antenna, often placed on a tall mast, the base station enables communication between mobile terminals (such as mobile phones or ...

Types and Applications of Mobile Communication Base Stations

In terms of form, future base stations will develop in three directions: macro base stations with higher performance and integration, micro base stations with smaller size, and ...



base station

"Base Station Technology: An Overview" by IEEE Communications Magazine: This article provides a general overview of different base station types, their functions, and the ...

[Two-Way Communication Code Requirements](#)

Two-Way Communication Systems are required in Areas of Refuge and Occupant Evacuation



Elevator lobbies. Two-Way Communication ...



Base station types: a solution for every deployment scenario

There are different types of base stations, offering a wide variety of operating characteristics under different conditions, with a suitable solution for each type of scenario, but ...



4 types of Base stations

Macro cell, Micro cell, Pico cell and Femto cell are 4 types of base stations in wireless communication networks. Macrocell antennas must be properly ...



Base station

OverviewWireless communicationsLand surveyingComputer networkingSee also

In radio communications, a base station is a wireless communications station installed at a fixed location and used to communicate as part of one of the following: o a push-to-talk two-way radio system, or;o a wireless telephone system such as cellular CDMA or GSM cell site.



5G Base Station Architecture

Uncover the intricate world of 5G Base Station Architecture, from gNode B to NGAP signaling. Dive into flexible network deployment options.



BS (Base Station)

A base station (BS) is a key component of modern wireless communication networks, providing the interface between wireless devices ...

PowerPoint Presentation

The Air Force Installation and Mission Support Center sustains the base communications infrastructure that supports Department of the Air Force mission requirements.



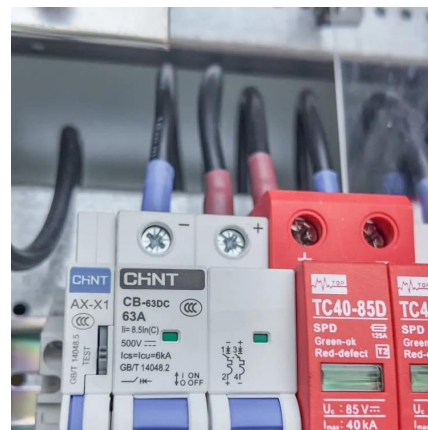
What is a base station?

In telecommunications, a base station is a fixed transceiver that is the main communication point for one or more wireless mobile client devices. A base station serves as ...



RRH vs. Traditional Base Stations: A Comparison

This article explores the differences between Remote Radio Head (RRH) based base stations and traditional base station architectures, commonly used in cellular communication systems.



Base Stations

The present-day tele-space is incomplete without the base stations as these constitute an important part of the modern-day scheme of wireless communications. They are ...

What Are Base Station Antennas? Complete Guide

In modern telecommunications systems, the base station antenna stands out as an undeniable and crucial component to facilitate our daily ...





BS (Base Station)

Base stations are typically designed as a set of hardware and software components that work together to provide wireless communication ...

base transceiver station components

Interface Units: Convert and adapt signals between the BTS and other network elements, ensuring compatibility and proper communication. A Base Transceiver Station ...



The Central Role of Base Stations in Two-Way Radio Systems

What is a Base Station in Two-Way Radio Communication? A base station in the context of two-way radio communication refers to a fixed, central hub that facilitates wireless communication ...

Base Station

Sure, here are three main takeaways about Base Station in HTML numbered form:"`html A Base Station forms a critical part of any cellular network as it connects mobile ...



The Base Station in Wireless Communications: The ...

Equipped with an electromagnetic wave antenna, often placed on a tall mast, the base station enables communication between mobile terminals ...



Base Stations

The present-day tele-space is incomplete without the base stations as these constitute an important part of the modern-day scheme of wireless ...



BS (Base Station)

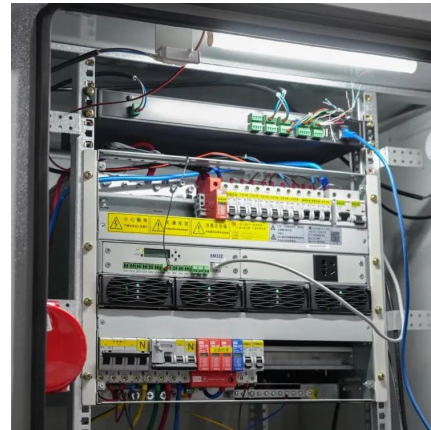
Base stations are typically designed as a set of hardware and software components that work together to provide wireless communication services. The hardware components of ...





Base Transceiver Station BTS Technology

Base Transceiver Station (BTS) is the equipment which facilitates the wireless communication between user equipments and the network. The term BTS is generally and commonly ...



Base station

Base stations are sometimes called control or fixed stations in US Federal Communications Commission licensing. These terms are defined in regulations inside Part 90 of the ...

Types and Applications of Mobile Communication ...

In terms of form, future base stations will develop in three directions: macro base stations with higher performance and integration, micro ...



Cellular Base Stations - Cellular Sites . Tnuda

The antennas of a cellular base station are the source of radiofrequency radiation that is transmitted through the spatial volume of the ...



4 types of Base stations

Macro cell, Micro cell, Pico cell and Femto cell are 4 types of base stations in wireless communication networks. Macrocell antennas must be properly mounted on ground-based ...



Satellite Communication Protocols and Ground Stations

In the intricate realm of satellite communication protocols and ground stations, the orchestration of data transmission and reception unfolds ...

FREQUENTLY ASKED QUESTIONS ON HEALTH AND ...

A base station (commonly known as a mast) is a transmission and reception station in a fixed location, consisting of one or more receive/transmit antenna and microwave dish mounted on ...



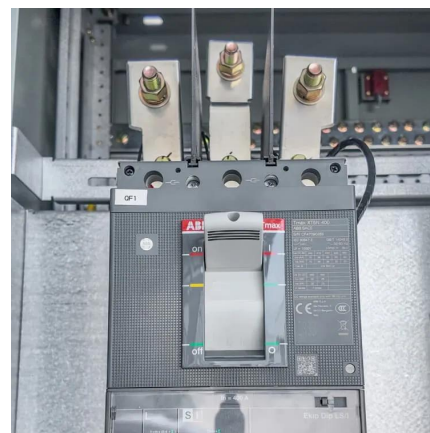


What Is the Role of a Base Station in Wireless Communication?

Base stations are critical components in wireless communication networks, serving as the intermediary between mobile devices and the core network. They play a vital role in ...

Base Transceiver Stations (BTS)

What is a Base Transceiver Station? A Base Transceiver Station, commonly known as BTS, is a critical piece of equipment in wireless communication ...



Contact Us

For catalog requests, pricing, or partnerships, please visit:
<https://talbert.co.za>