

Communication base stations generate electricity at night disturbing residents





Overview

Is RF a health risk for humans living around mobile phone base stations?

A review entitled “Evidence for a health risk by RF on humans living around mobile phone base stations: From radiofrequency sickness to cancer reviewed the existing scientific literature and found radiofrequency sickness, cancer and changes in biochemical parameters (Balmori 2022).

Do base station antennas affect the health of people?

He states in the abstract, “Overall results of this review show three types of effects by base station antennas on the health of people: radiofrequency sickness (RS), cancer (C) and changes in biochemical parameters (CBP).

Does distance from base stations affect health?

The majority of published studies in different countries have shown a relationship between distance from base stations and a variety of health complaints. They have found that the closer to the towers people live there is an increase incidence of reported physical symptoms including those below.

What is the maximum exposure to RER from mobile phone base station antennas?

They recommend revision of standard guidelines for public exposure to RER from mobile phone base station antennas. Note: The Maximal Permissible Level for intermittent exposure in Egypt is 0.4mW/cm^2 . For continuous exposure it is decreased to 0.0080 mW/cm^2 . Levels in the apartments ranged from 0.0001 to 0.0067 mW/cm^2 .

Why do AM radio stations stop working at night?

Most AM radio stations are required by the FCC's rules to reduce their power or cease operating at night in order to avoid interference to other AM stations. FCC rules governing the daytime and nighttime operation of AM radio stations are a consequence of the laws of physics.



How does mobile data traffic affect the energy consumption of 5G base stations?

The explosive growth of mobile data traffic has resulted in a significant increase in the energy consumption of 5G base stations (BSs).



Communication base stations generate electricity at night disturbing

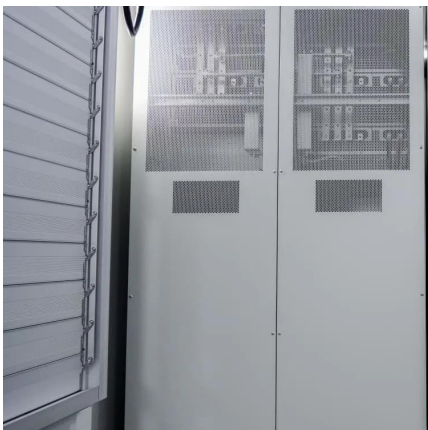
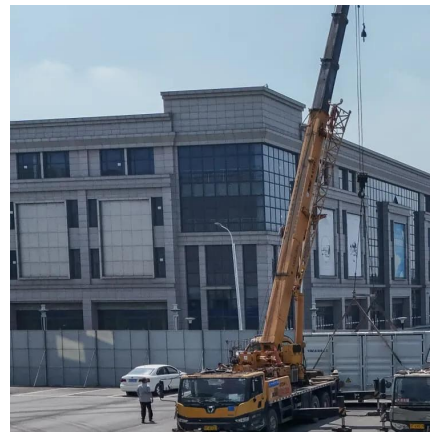


Base stations

Over large distances, the signals must be relayed by a communication network comprising base stations and often supported by a wired network. The power of a base station varies (typically ...

Understanding Noise Pollution: Definitions, Sources, ...

advertisement Definition of Noise Pollution. Have you ever wondered how we hear sounds from different sources like voices, violins, or ...



VERY DISTURBING ENCOUNTER Exploring Westinghouse Factory at Night

In this video I explored the abandoned historic Westinghouse Electric Factory located in Cleveland, Ohio. While exploring here I had a scary encounter with s

Energy-Efficient Base Stations , part of Green Communications

With the explosion of mobile Internet applications and the subsequent exponential



increase of wireless data traffic, the energy consumption of cellular networks has rapidly caught the ...



Assessment of Noise from Telecommunication Masts Diesel ...

The result of the ambient noise level of diesel generators installed at telecommunication base stations shows a clear violation of NASREA noise permissible level for both day and night with ...



Communication Base Station Fire Protection , HuiJue Group E-Site

As global 5G deployments accelerate, communication base station fire protection emerges as a silent crisis. Did you know a single cabinet fire can disrupt service for 50,000 users within 15 ...



Why AM Stations Must Reduce Power, Change Operations, or ...

Most of these stations are also required to reduce power at night, to avoid causing interference to the dominant stations and to each other. Other stations, which cannot provide the necessary ...



Solar panels that can generate electricity at night have been ...

While standard solar panels can provide electricity during the day, this device can be a "continuous renewable power source" during the day and at night.



Revealing 5G Cell Tower Health Impacts: 7 Scientific Case Studies

In this case report we present a woman aged 52 years who developed health problems consistent with the microwave syndrome after installation of a 5G base station facing ...

Local Noise Regulations: Remedies for Disturbing Neighbors

Below is a comprehensive discussion on local noise regulations in the Philippines and the possible remedies available if neighbors become disturbingly noisy. This article is ...



Energy consumption optimization of 5G base stations considering

An energy consumption optimization strategy of 5G base stations (BSs) considering variable threshold sleep mechanism (ECOS-BS) is proposed, which includes the initial ...



Harmful Effects of Mobile Towers in Residential Areas

While the presence of mobile towers in residential neighborhoods ensures reliable connectivity for residents, concerns have been raised about ...



Revealing 5G Cell Tower Health Impacts: 7 Scientific ...

In this case report we present a woman aged 52 years who developed health problems consistent with the microwave syndrome after ...

Assessment of environmental impact of telecommunication base

In Nigeria, most telecommunication companies use diesel generators to power their Base Transceivers Stations (BTS) due to erratic power supply to avoid failure in transmission of their ...





The Role of Low Noise Generators During Emergency Operations ...

In many locations, agencies prefer lower sound units when operating near suburban neighborhoods during night hours. This allows for emergency work to continue ...

The evidence is clear: Living close to a mobile phone mast has

The overall results of the review show three types of effects from mobile masts on human health: radiofrequency illness (RS), cancer (C) and changes in biochemical parameters (CBP). Of all ...



Is It Rude to Run Generator at Night

Generator Disturbing the Peace Noise ordinances vary from city to city, but most have restrictions on the operation of generators, particularly during late night and early morning hours. ...

Optimization of Communication Base Station Battery ...

In the communication power supply field, base station interruptions may occur due to sudden natural disasters or unstable power supplies. This work studies the optimization of ...



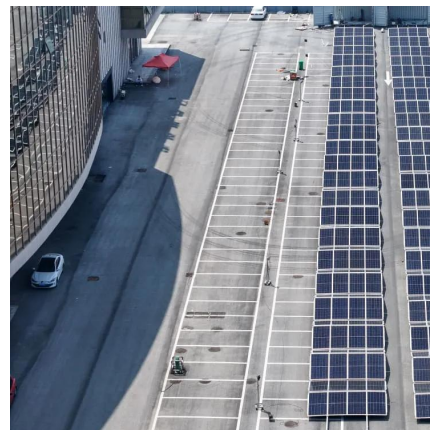
Filing A Noise Complaint

If any noise is being made which causes you annoyance, discomfort or any injury, then you can file a complaint with the authorities.



Problems with audible substation noise and what you ...

Audible substation noise Audible substation noise, particularly continuously radiated discrete tones (e.g., from power transformers), is the ...



Harmful Effects of Mobile Towers in Residential Areas

While the presence of mobile towers in residential neighborhoods ensures reliable connectivity for residents, concerns have been raised about potential health risks associated ...



Cell Tower Radiation Health Effects

In August 2022 Biologist and researcher Alfonso Balmori published a thorough review of the existing scientific literature on the effects of base ...



Experimental study on the cooling and electricity-saving effects of

The cooling and electricity-saving effects of the radiative cooling coating were assessed using field measurements in Chengdu, China. Based on the experimental data, ...

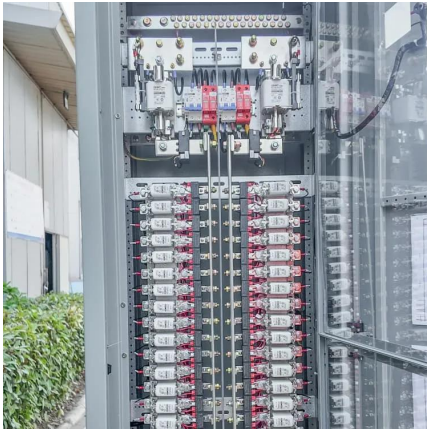
Optimization of Communication Base Station Battery ...

In the communication power supply field, base station interruptions may occur due to sudden natural disasters or unstable power supplies. This ...



Mobile phone and base stations radiation and its effects on ...

The effects of radiation emitted from cell phones and base stations on wildlife, humans and the environment were summarized with suitable examples and studies conducted ...



Energy-efficiency schemes for base stations in 5G heterogeneous

In today's 5G era, the energy efficiency (EE) of cellular base stations is crucial for sustainable communication. Recognizing this, Mobile Network Operators are actively prioritizing EE for ...



Installation of Base Stations and Radiation Safety

The rollout of 5G services needs the establishment of an extensive network of radio base stations and small cells to support very high-speed data transmission and ubiquitous coverage. To ...



Cell Tower Radiation Health Effects

In August 2022 Biologist and researcher Alfonso Balmori published a thorough review of the existing scientific literature on the effects of base station (cell tower) antennas on ...



Contact Us

For catalog requests, pricing, or partnerships, please visit:
<https://talbert.co.za>